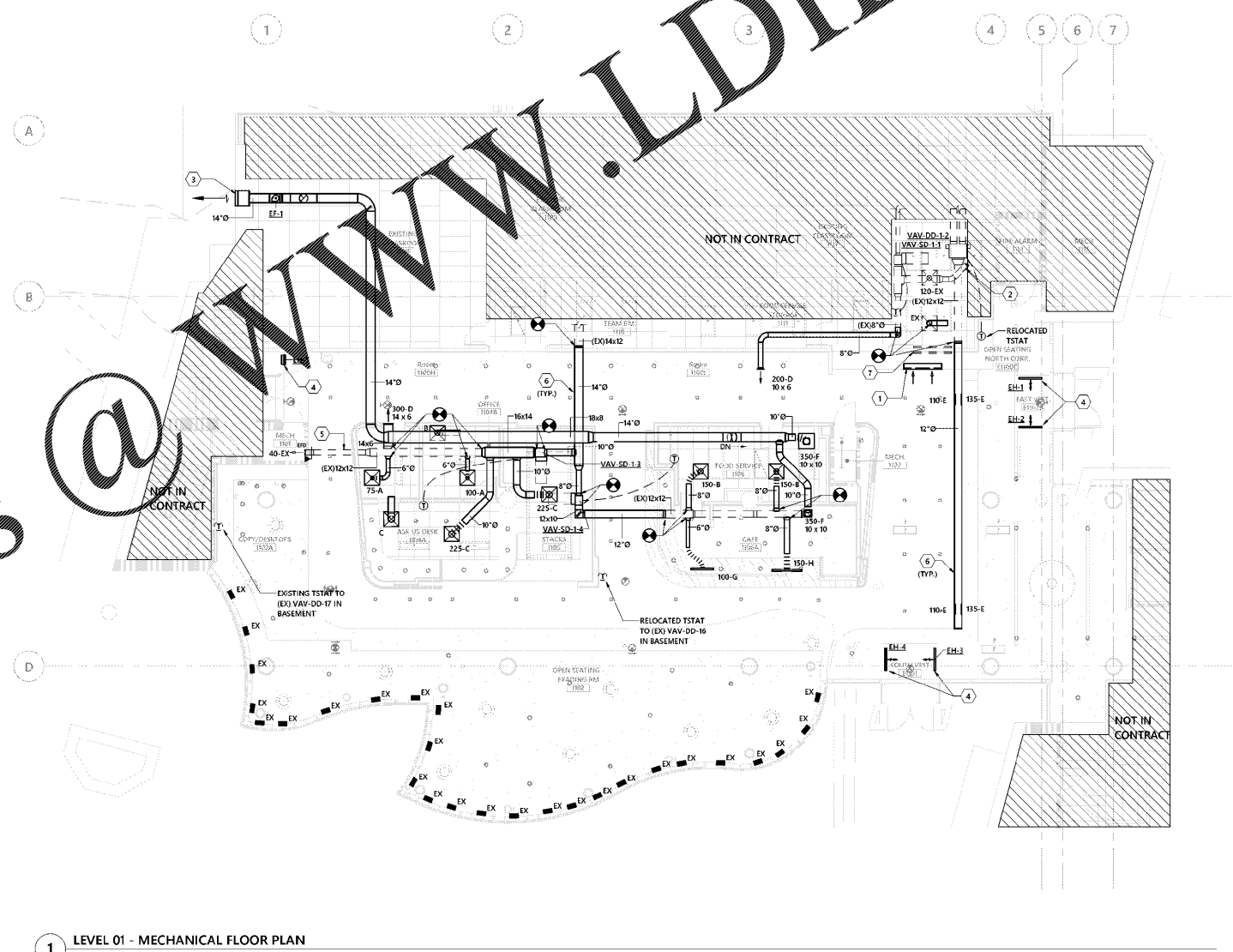
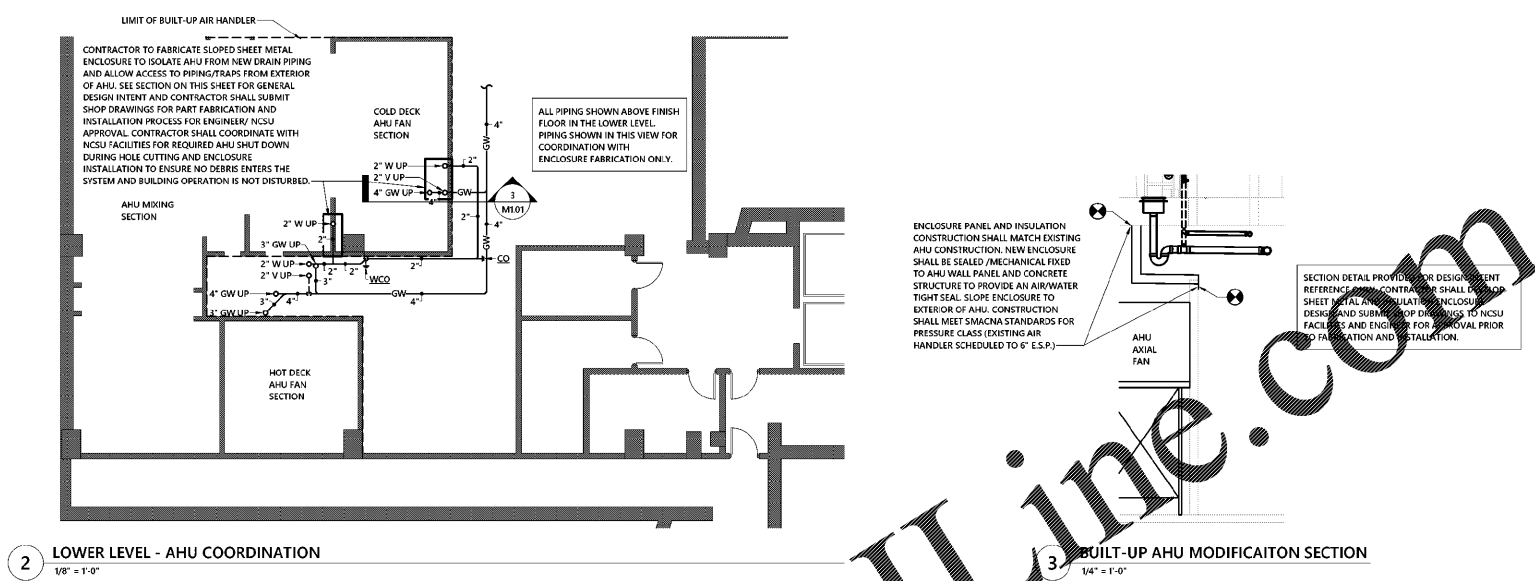




ISSUE DATE: 08.24.2020
PHASE: Bid Set

#	DATE	REVISION

MECHANICAL
PLAN - LEVEL 01



- NOTES**
- 60"x36" TYPE F GRILLE TO INSTALL WITH FACE TIGHT TO STRUCTURE. INSTALL LOUVERED GRILL WITH AIR BLADES TURNED TOWARDS STRUCTURE AND FINISH COLOR TO MATCH WALL FINISH. COORDINATE WITH ARCHITECT.
 - BALANCE EXISTING ELECTRICAL ROOM SUPPLY GRILLE TO 40 CFM.
 - TRANSFER GRILL BY G.C. INSTALLED IN EXISTING BRICK FACADE. LOUVER TO BE 2 SQ. FEET. GRILL SIZE WITH MIN. 50% FREE AREA (RUSKIN ELF-375 OR EQUAL WITH BIRD SCREEN) AND FINISH COLOR TO BE SELECTED BY ARCHITECT. SEE ARCHITECTURAL ELEVATION FOR EXACT LOUVER LOCATION AND MOUNTING HEIGHT.
 - EXISTING DUCTWORK INSULATION TO BE REMOVED WHERE EXPOSED AND EXISTING SHEET TO BE PREPARED FOR PAINTING. COORDINATE FINAL FINISH COLOR WITH ARCHITECT.
 - EXPOSED ROUND DUCTWORK SHALL BE DOUBLE-WALL SPIRAL DUCTWORK WITH SOLID INNER WALL AND PAINT GRIP COATING. COORDINATE WITH ARCHITECT FOR FINAL FINISH COLOR TO PAINT DUCTWORK.
 - EXISTING TRANSFER OPENING TO REMAIN WITH EXISTING FIRE DAMPER REMOVED.

Order Plans @ www.LDILine.com

