

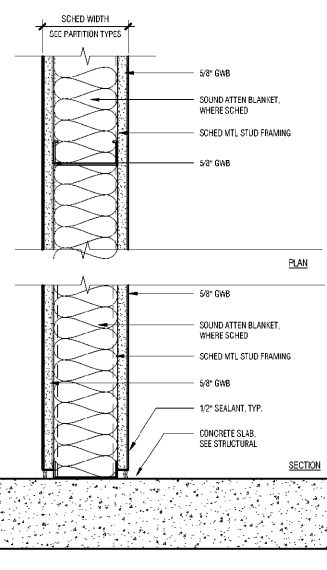
**PARTITION SCHEDULE**

**A** ONE LAYER OF GYPSUM WALL BOARD AFFLED TO EACH SIDE OF METAL STUDS

CONSTRUCTION:	A1	A2	A3	A4	A5
STUD SIZE	2-1/2"	3-5/8"	4"	6"	8"
LIMITING HEIGHT 5 PSF LATERAL LOAD L/240 MAX DEFLECTION	FOR STUD SIZE (GAGE) AND SPACING, REFER TO MANUFACTURER AND SUBMIT DATA				
GWB THICKNESS	5/8"	5/8"	5/8"	5/8"	5/8"
PARTITION THICKNESS (T)	3-3/4"	4-7/8"	5-1/4"	7-1/4"	9-1/4"
ACOUSTICAL:	TYPE S, T - SEE INSULATION NOTES				
NO INSULATION (STC)	40	40	40	40	40
INSULATION (STC)	49	49	49	49	49
TESTING NO. (UGS)					
FIRE RATING:	1-HOUR, WHERE INDICATED (SEE PLAN)				
TEST NUMBER (UL DSS)	U41	U45	U46	U48	U48

**SPECIAL CONDITIONS:** FINISHES PER SCHEDULE  
 1. USE CEMENTATION BACKER BOARD BEHIND TILE.  
 2. USE MOISTURE RESISTANT SHEATHING IN HAZARDOUS AREAS (FOOD PREP).  
 3. WALL TO RECEIVE MILLWORK OR PANELING; ADJUST DEVICES FOR FACE OF WALL.

**NOTES:**

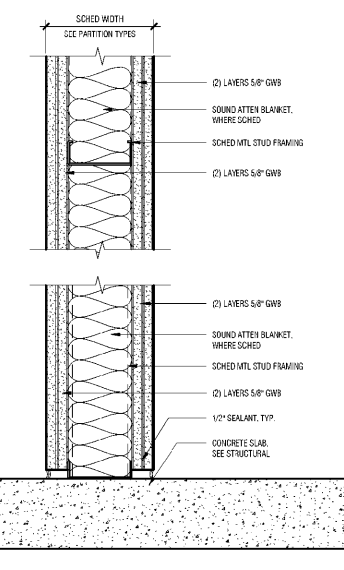


**C** TWO LAYERS OF GYPSUM WALL BOARD AFFLED TO EACH SIDE OF METAL STUDS

CONSTRUCTION:	C1	C2	C3	C4	C5
STUD SIZE	2-1/2"	3-5/8"	4"	6"	8"
LIMITING HEIGHT 5 PSF LATERAL LOAD L/240 MAX DEFLECTION	FOR STUD SIZE (GAGE) AND SPACING, REFER TO MANUFACTURER AND SUBMIT DATA				
GWB THICKNESS	5/8"	5/8"	5/8"	5/8"	5/8"
PARTITION THICKNESS (T)	5"	6-1/8"	6-1/2"	8-1/2"	10-1/2"
ACOUSTICAL:	TYPE S, T - SEE INSULATION NOTES				
NO INSULATION (STC)	48	48	48	48	48
INSULATION (STC)	56	56	56	56	56
TESTING NO. (UGS)					
FIRE RATING:	1-HOUR, WHERE INDICATED (SEE PLAN)				
TEST NUMBER (UL DSS)	U411	U411	U411	U411	U411

**SPECIAL CONDITIONS:** FINISHES PER SCHEDULE  
 1. USE CEMENTATION BACKER BOARD BEHIND TILE.  
 2. USE MOISTURE RESISTANT SHEATHING IN HAZARDOUS AREAS (FOOD PREP).  
 3. WALL TO RECEIVE MILLWORK OR PANELING; ADJUST DEVICES FOR FACE OF WALL.

**NOTES:**

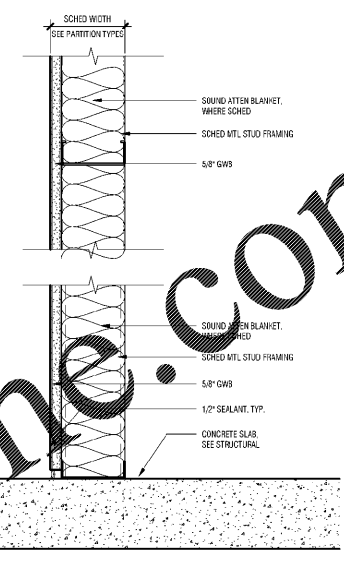


**D** ONE LAYER OF GYPSUM WALL BOARD AFFLED TO ONE SIDE OF METAL STUDS

CONSTRUCTION:	D1	D2	D3	D4	D5
STUD SIZE	2-1/2"	3-5/8"	4"	6"	8"
LIMITING HEIGHT 5 PSF LATERAL LOAD L/240 MAX DEFLECTION	FOR STUD SIZE (GAGE) AND SPACING, REFER TO MANUFACTURER AND SUBMIT DATA				
GWB THICKNESS	5/8"	5/8"	5/8"	5/8"	5/8"
PARTITION THICKNESS (T)	3-1/8"	4-1/4"	4-5/8"	6-5/8"	8-5/8"
ACOUSTICAL:	TYPE S, T - SEE INSULATION NOTES				
NO INSULATION (STC)	N/A	N/A	N/A	N/A	N/A
INSULATION (STC)	N/A	N/A	N/A	N/A	N/A
TESTING NO. (UGS)					
FIRE RATING:	N/A				
TEST NUMBER (UL DSS)	N/A	N/A	N/A	N/A	N/A

**SPECIAL CONDITIONS:** FINISHES PER SCHEDULE  
 1. USE CEMENTATION BACKER BOARD BEHIND TILE.  
 2. USE MOISTURE RESISTANT SHEATHING IN HAZARDOUS AREAS (FOOD PREP).  
 3. WALL TO RECEIVE MILLWORK OR PANELING; ADJUST DEVICES FOR FACE OF WALL.

**NOTES:**



**PARTITIONS - GENERAL NOTES**

- WHERE FIRE TESTS ARE INDICATED IN PARTITION DESCRIPTION, CONFURE & INSTALL PARTITION PER TESTING AGENCY CRITERIA OR OTHER TESTS APPROVED BY LOCAL CODE OFFICIALS. TESTING AGENCY CRITERIA MAY INCLUDE ADDITIONAL COMPONENTS NOT SPECIFICALLY INDICATED ON THIS SCHEDULE OR REFERENCED DETAILS.
- DO NOT SCALE DRAWINGS. WRITTEN DIMENSIONS SHALL ESTABLISH LOCATION OF ALL PARTITIONS. LARGER SCALE DRAWINGS HAVE PRIORITY OVER SMALLER SCALE DRAWINGS. CONTRACTOR SHALL NOTIFY THE ARCHITECT OF ANY DISCREPANCIES IN THE DRAWINGS BEFORE PROCEEDING WITH CONSTRUCTION.
- GYP BO IS 5/8" TYPE X FIRE RATED GYP BO. TYPICAL SOUND PARTITIONS SUBSTITUTE 5/8" TYPE X IN LIEU OF 1/2" TYPE C REQUIRED BY LISTED TEST REPORT. CONFIRM APPROVAL OF THIS SUBSTITUTION BY THE BUILDING OFFICIAL.
- GYP BO PARTITION CONTROL JOINTS ARE REQUIRED AT APPROXIMATELY 30'-0" O.C. FOR STRAIGHT & CONTINUOUS WALLS. AT OPENING LOCATIONS, OR AS NOTED ON FINISH SCHEDULES, WHERE NOT SPECIFICALLY INDICATED ON THE DRAWINGS, SUBMIT CONTRACTOR'S PROPOSED CONTROL JOINT LOCATIONS TO ARCHITECT FOR APPROVAL.
- DO NOT PLACE MECHANICAL AND/OR ELECTRICAL DEVICES BACK TO BACK IN SOUND BARRIER PARTITIONS. ALL DEVICES TO BE PLACED IN SEPARATE STUD SPACES WITH 6" O.C. MIN. SEPARATION.
- DO NOT PENETRATE THROUGH SOUND BARRIER PARTITIONS TO REMOVE PERIMETER SOUND SEAL BETWEEN OUTLET WALL FRAMING ON BOTH SIDES OF GYPSUM WALLBOARD LAYER MEETING JOINT SURFACES.

**INSULATION NOTES**

- SOUND BARRIER PARTITIONS ARE NOTED AS SUFFIX 'S' AT SOUND BARRIER PARTITIONS. PROVIDE SOUND ATTENTION BLANKET AS INDICATED IN THE TABLE BELOW. FILL VOIDS BETWEEN OVERHEAD TRACK AND STRUCTURE WITH SOUND ATTENTION BLANKET AND SEAL PERIMETER. REFER TO SPECIFICATIONS FOR ADDITIONAL INFORMATION AND REQUIREMENTS.
- THERMAL BARRIER PARTITIONS ARE NOTED WITH SUFFIX 'T'. PROVIDE FULL THICKNESS MINERAL WOOL BATT INSULATION WITH VAPOR RETARDER ON THE WARMER SIDE OF THE PARTITION.

**PARTITION HEIGHT CONDITION KEY**

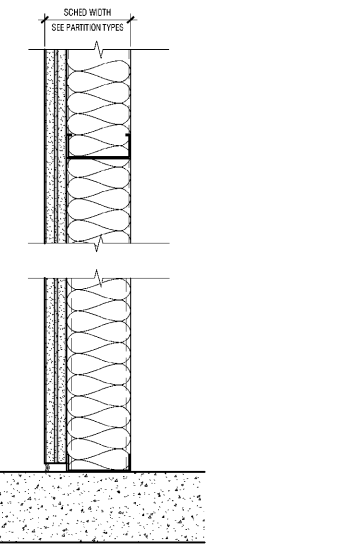
- PARTITION TO EXTEND TO UNDERSIDE OF STRUCTURE ABOVE (FIRE RATED, NON-RATED, AND SOUND BARRIER PARTITION ASSEMBLIES) ALL PARTITIONS EXTENDING TO STRUCTURE TO USE DEFLECTION C.P.S. SEE DETAIL THIS SHEET.
- T.O. VERTICAL FRAMING AT 12'-0" AFF. TWO LAYERS OF 5/8" GYP BOAD ON TOP. SEE SECTIONS T.O. GYP ASSEMBLY 12'-1 1/4".
- SUSPENDED DRYWALL PARTITION FROM STRUCTURE ABOVE.
- PARTITION TO EXTEND TO 12'-0" AFF TO RATED CEILING FIRE BARRIER. AER-AIRCEL (2) LAYERS OF TYPE X GYPSUM WITH SHIRT WALL. UNDER TO CEILING SURFACE TO BE 12'-0 3/4".
- PARTITION TO START 12'-0" AFF ABOVE CORE AND END TO STRUCTURE. ARCHITECT HAS MADE AN EFFORT TO LOCATE CONTROLS TO LAND ON A SOLID BEAM EXP. IN THE EAST/WEST DIRECTION, BUT WHERE THIS WAS NOT POSSIBLE, PARTITIONS TO FILL IN BETWEEN WALLS TO LAND ABOVE INTERSTITIAL FRAMING PLAN. SEE FINISH SCHEDULE FOR DETAILS.
- PARTITION TO BE BRACED TO STRUCTURE ABOVE WITH GWB HEIGHT AS SCHEDULED.
- BRACE TO METAL STUDS TO EXTEND 6" AOV CEILING BRACE AS REQUIRED.
- PARTITION TO 12'-0" AFF FOR PARTITION TYPE INDICATED AND CHANGES THICKNESS AT 12'-0" AFF. SEE 'ADV' PARTITION FOR HEIGHT OF COMPLETE ASSEMBLY.
- PARTITION TO EX. GWB CEILING ASSEMBLY OR TO UNDERSIDE OF NEW COVE.

**E** TWO LAYERS OF GYPSUM WALL BOARD AFFLED TO ONE SIDE OF METAL STUDS

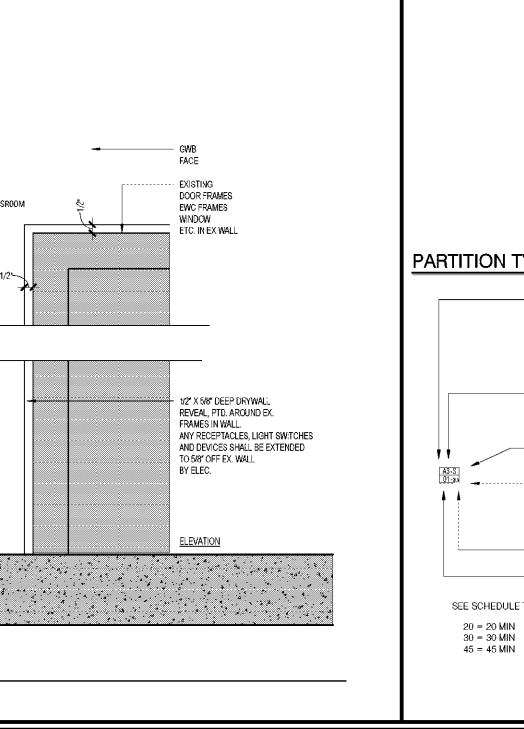
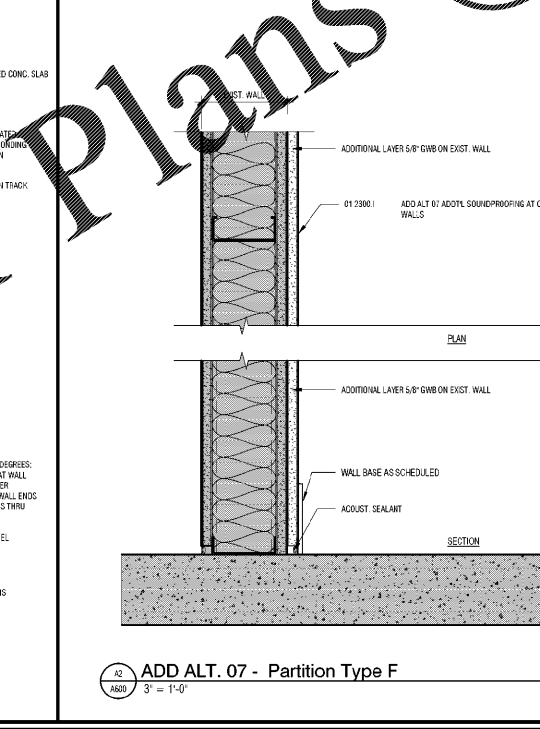
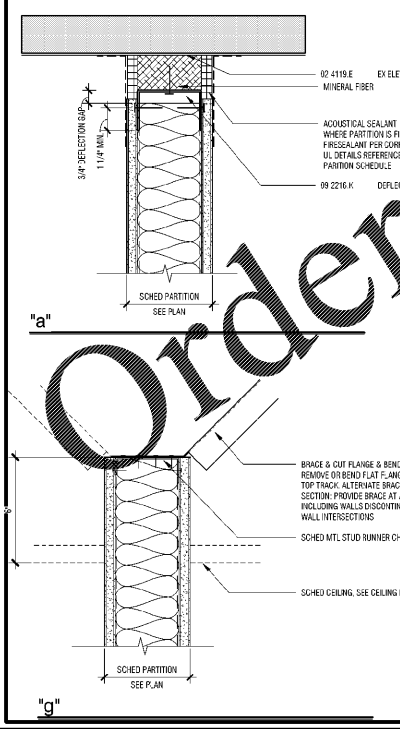
CONSTRUCTION:	E1	E2	E3	E4	E5
STUD SIZE	2-1/2"	3-5/8"	4"	6"	8"
LIMITING HEIGHT 5 PSF LATERAL LOAD L/240 MAX DEFLECTION	FOR STUD SIZE (GAGE) AND SPACING, REFER TO MANUFACTURER AND SUBMIT DATA				
GWB THICKNESS	5/8"	5/8"	5/8"	5/8"	5/8"
PARTITION THICKNESS (T)	3-3/4"	4-7/8"	5-1/4"	7-1/4"	9-1/4"
ACOUSTICAL:	TYPE S, T - SEE INSULATION NOTES				
NO INSULATION (STC)	N/A	N/A	N/A	N/A	N/A
INSULATION (STC)	N/A	N/A	N/A	N/A	N/A
TESTING NO. (UGS)					
FIRE RATING:	N/A				
TEST NUMBER (UL DSS)	N/A	N/A	N/A	N/A	N/A

**SPECIAL CONDITIONS:** FINISHES PER SCHEDULE  
 1. ONE LAYER 5/8" GYP BO (BACKER BOARD) AFFLED TO EACH SIDE OF METAL STUDS.  
 2. RECESSED WALL BASE FOR DETAIL XXXXX.

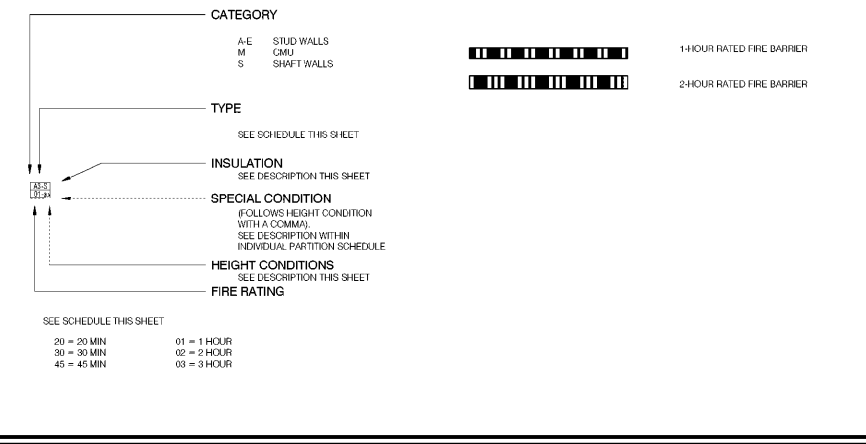
**NOTES:**



**PARTITIONS - HEIGHT CONDITION DETAILS**



**PARTITION TYPE LEGEND:**



ADD ALT. 07 - Partition Type F  
 3' = 1'-0"



ISSUE DATE:	08/24/2020	
PHASE:	BID SET	
#	DATE	REVISION

**PARTITION TYPES**