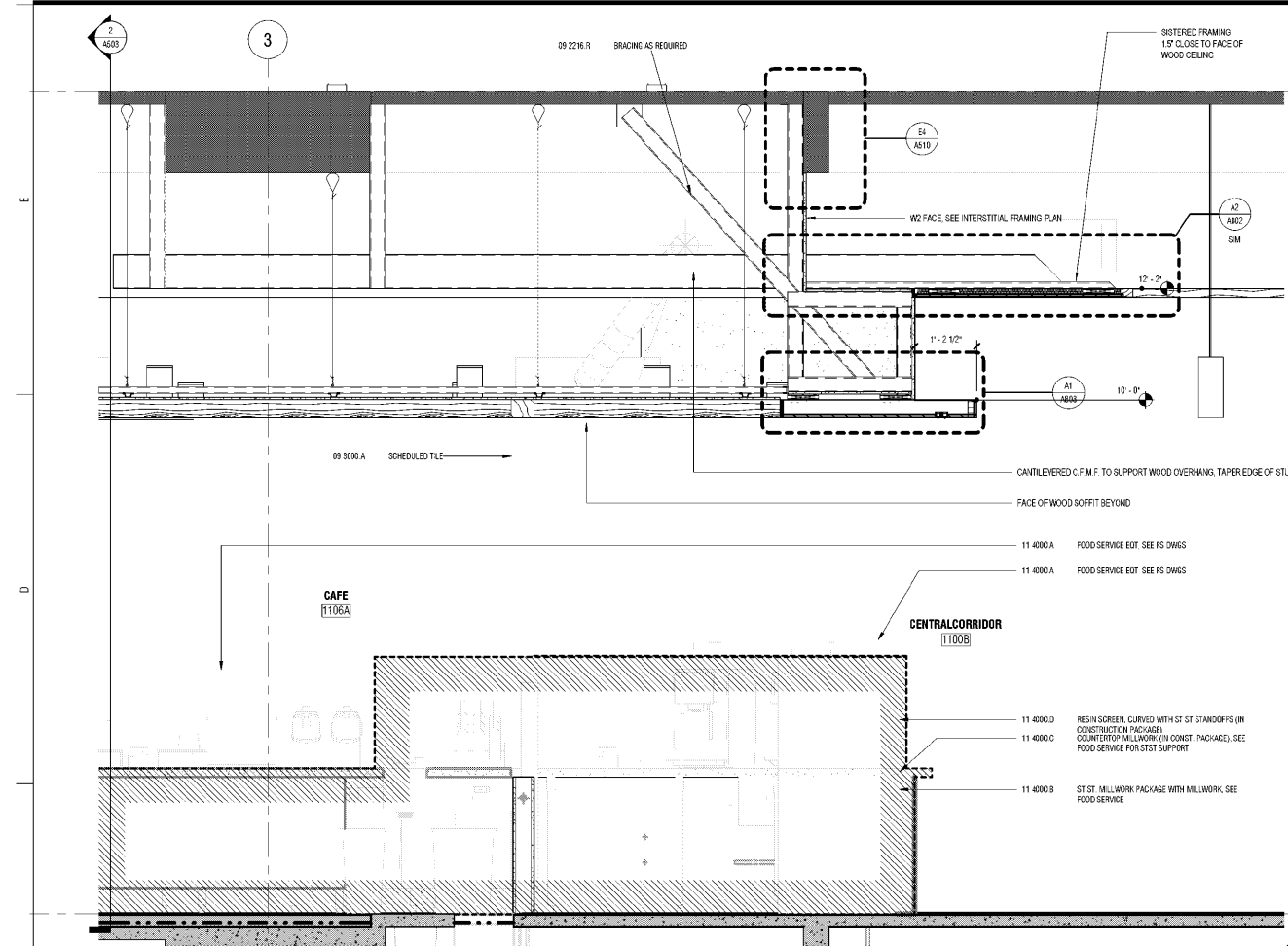
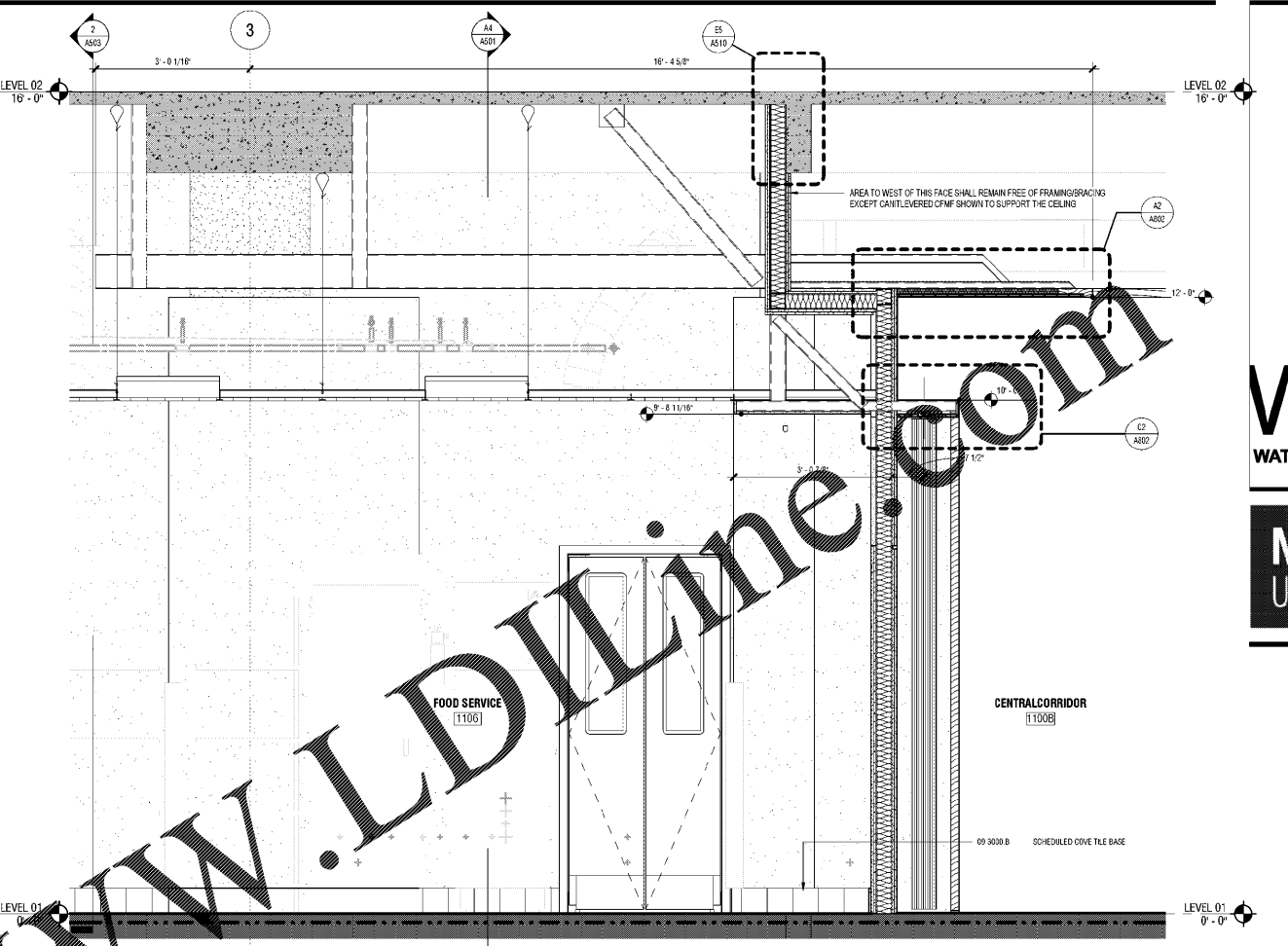


These drawings are the property of Watson Tate Savory, Inc. and may not be used in whole or in part without written consent of the architect and any contractor. It is subject to legal action.

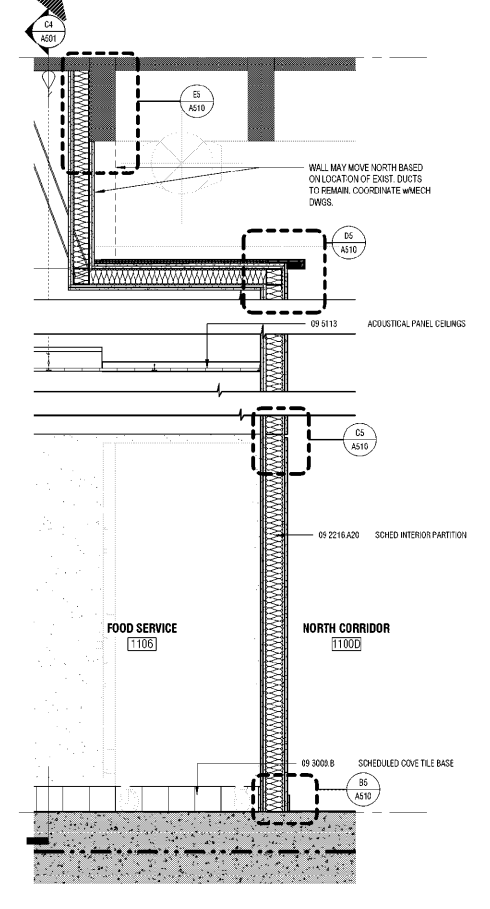
02/24/2020 4:42:25 PM  
B:\19-20653\Jordan Hall\1911\NCSU Jordan Hall - A501.rvt



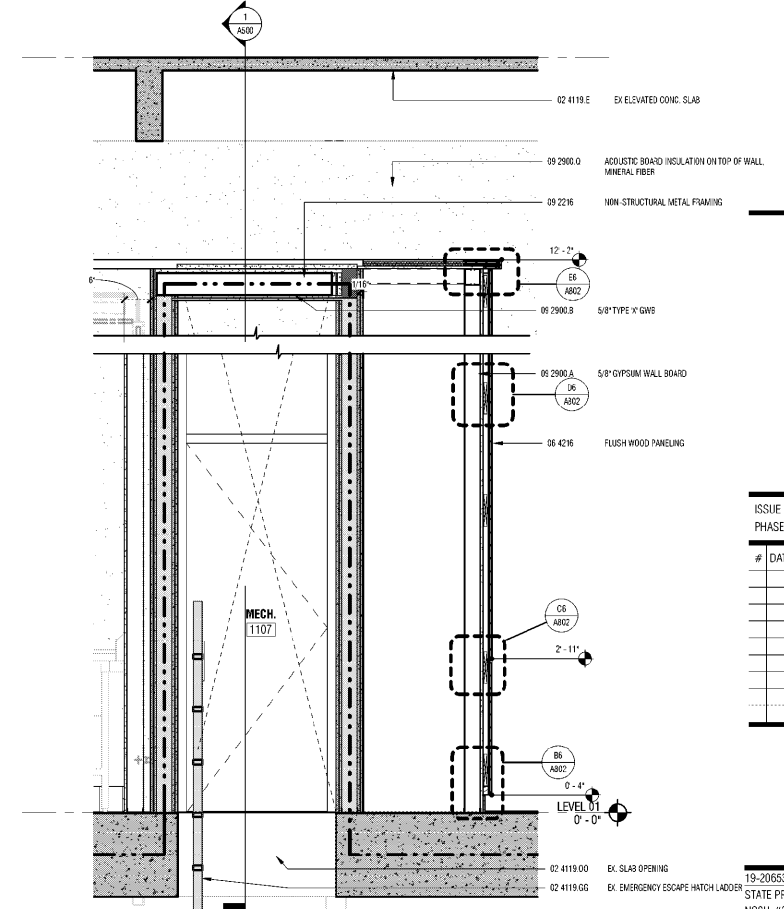
C1 SECTION AT CAFE - WEST WALL  
A501 3/4" = 1'-0"



C2 SECTION AT CAFE SCREEN - WEST WALL  
A501 3/4" = 1'-0"



A4 SECTION AT NORTH CORRIDOR  
A501 3/4" = 1'-0"



A5 SECTION DETAIL - ESCAPE HATCH WITH RATED 2 HR FIRE BARRIER CEILING  
A501 3/4" = 1'-0"

ARCHITECTURE  
INTERIORS  
PLANNING

**WTS**  
WATSON TATE SAVORY

**NC STATE**  
UNIVERSITY

LIBRARY RENOVATION - JORDAN HALL  
N.C. STATE UNIVERSITY  
RALEIGH, NC

Order Plans @ [WWW.LDILLINE.COM](http://WWW.LDILLINE.COM)



ISSUE DATE:	08/24/2020	
PHASE:	BID SET	
#	DATE	REVISION

SECTIONS

19-20653  
STATE PROJECT NO.  
NCSU #201520018  
A/E PROJECT NO.  
058  
NCSU FACILITIES NO. SHEET

**A501**