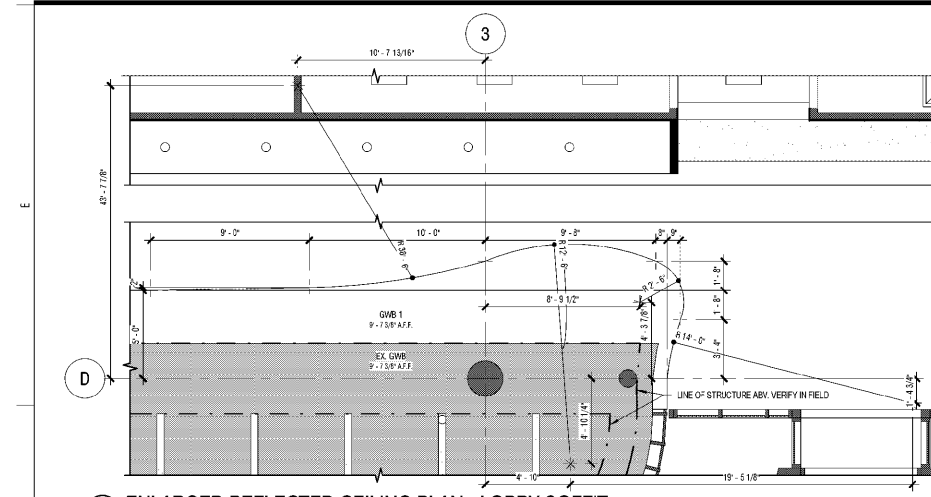
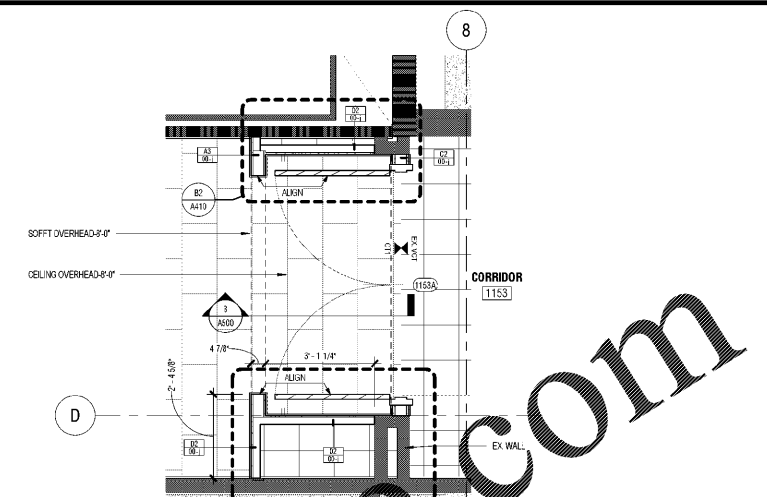


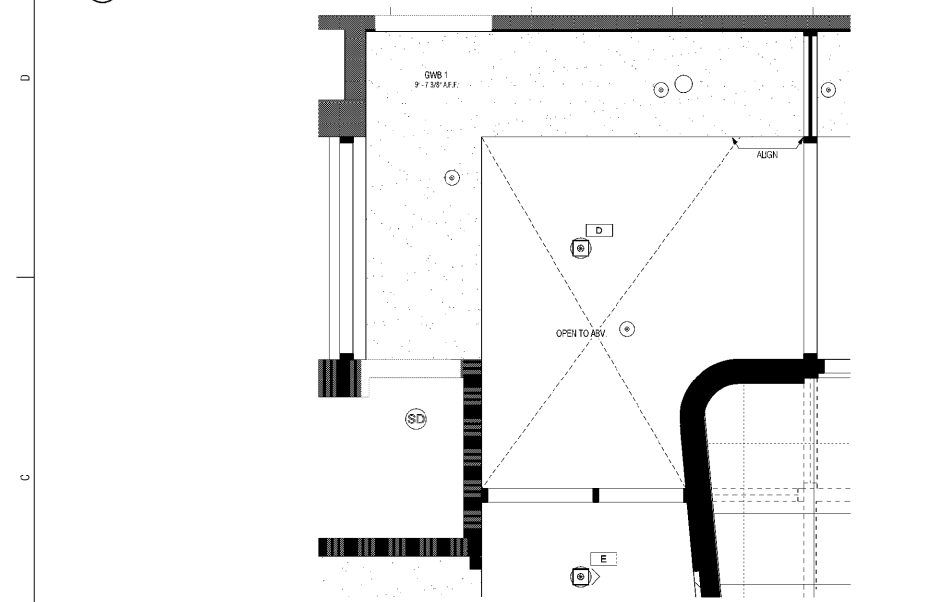
These drawings are the property of Watson Tate Savory, Inc. and may not be used in whole or in part without the express consent of the architect and any reproduction is subject to legal action.



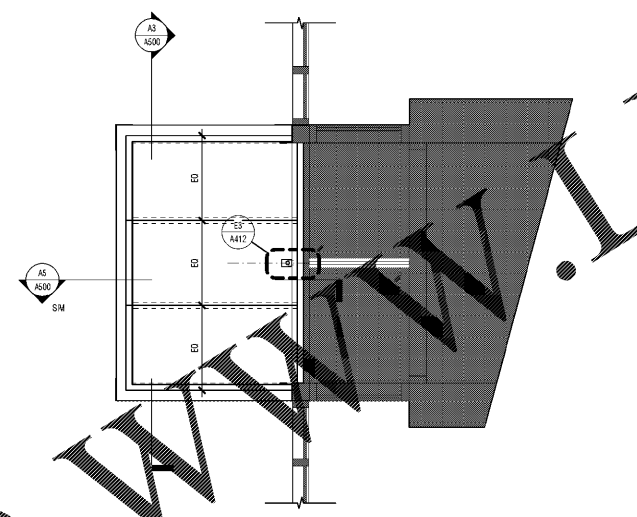
1 ENLARGED REFLECTED CEILING PLAN - LOBBY SOFFIT
1/4" = 1'-0"



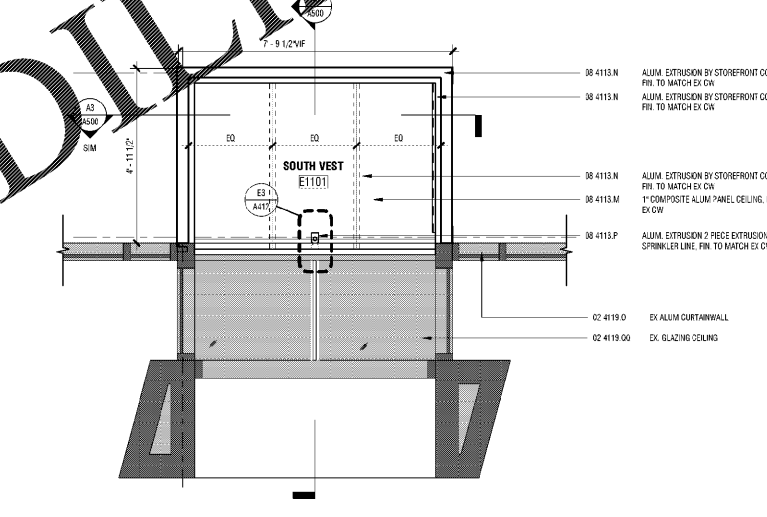
8 ENLARGED FLOOR PLAN - ADD ALT. 035
1/2" = 1'-0"



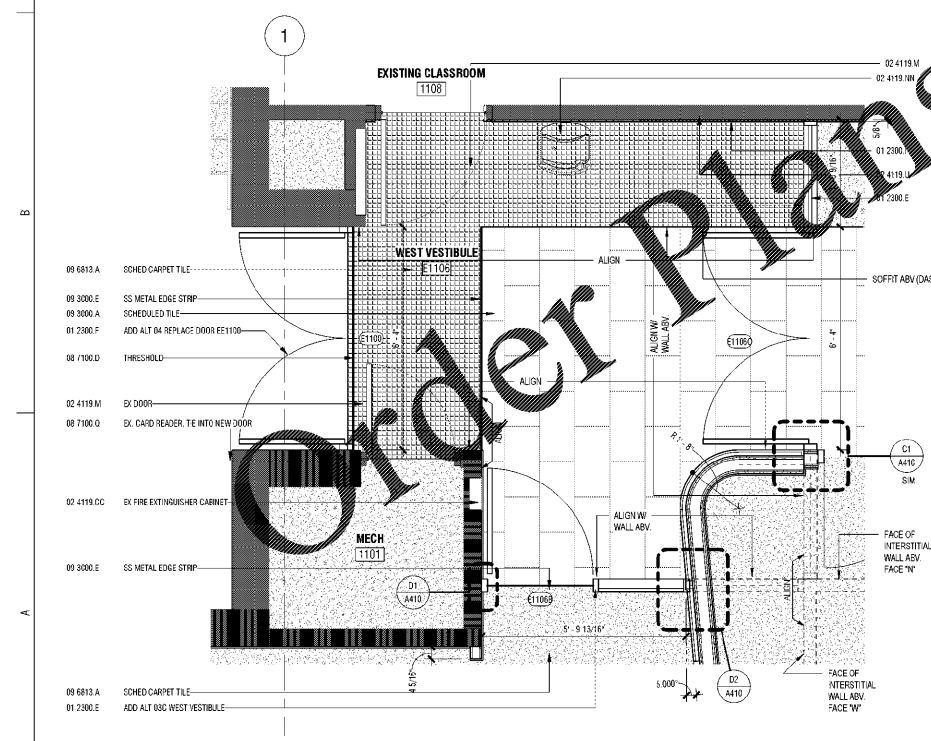
3 ENLARGED REFLECTED CEILING PLAN - ADD ALT. 03C
1/2" = 1'-0"



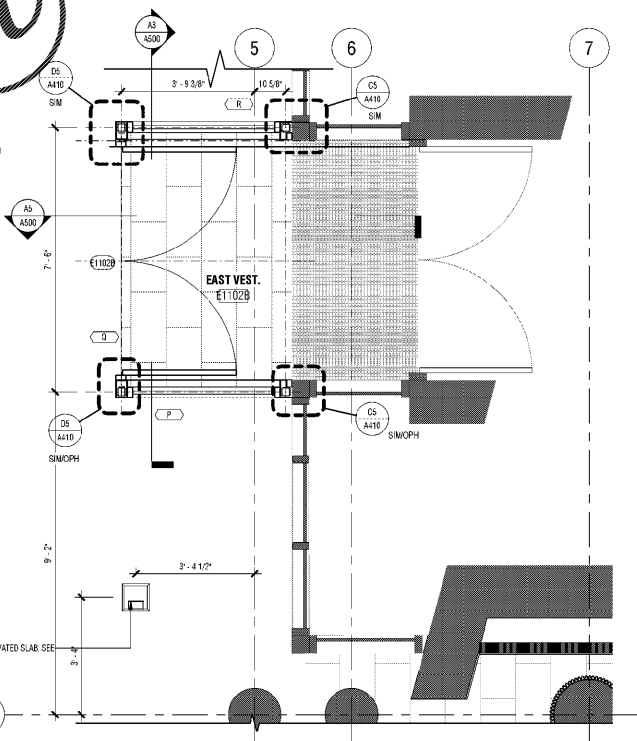
5 ENLARGED REFLECTED CEILING PLAN - ADD ALT. 03B
1/2" = 1'-0"



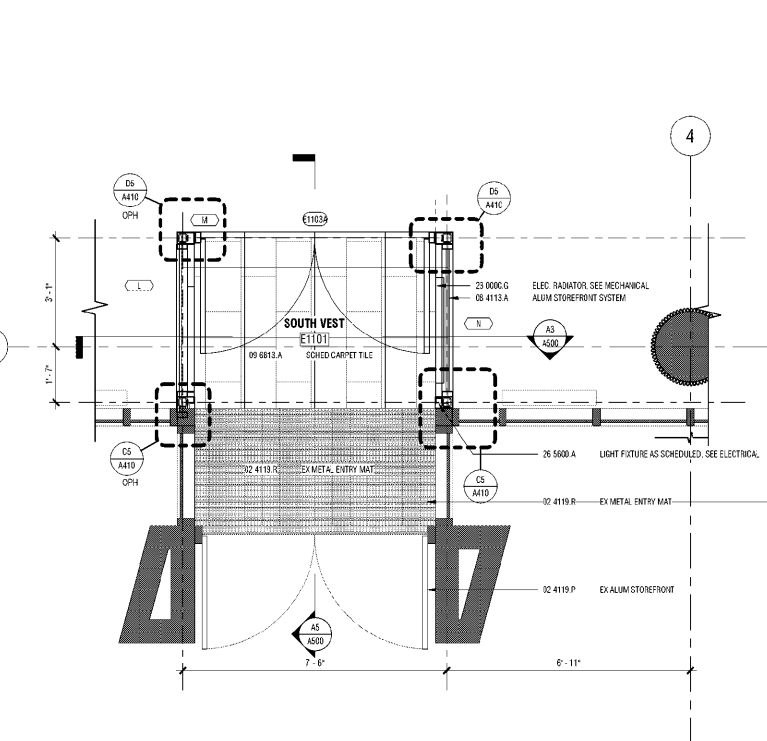
6 ENLARGED REFLECTED CEILING PLAN - ADD ALT. 03A
1/2" = 1'-0"



4 ENLARGED FLOOR PLAN - ADD ALT. 03C
1/2" = 1'-0"



5 ENLARGED FLOOR PLAN - ADD ALT. 03B
1/2" = 1'-0"



6 ENLARGED FLOOR PLAN - ADD ALT. 03A
1/2" = 1'-0"

ARCHITECTURE
INTERIORS
PLANNING

WTS
WATSON TATE SAVORY

NC STATE
UNIVERSITY

LIBRARY RENOVATION - JORDAN HALL
N.C. STATE UNIVERSITY
RALEIGH, NC



ISSUE DATE: 08/24/2020
PHASE: BID SET

#	DATE	REVISION

ENLARGED PLANS

19-20653
STATE PROJECT NO.
NCSU #201520018
A/E PROJECT NO.
058
NCSU FACILITIES NO. SHEET

A401