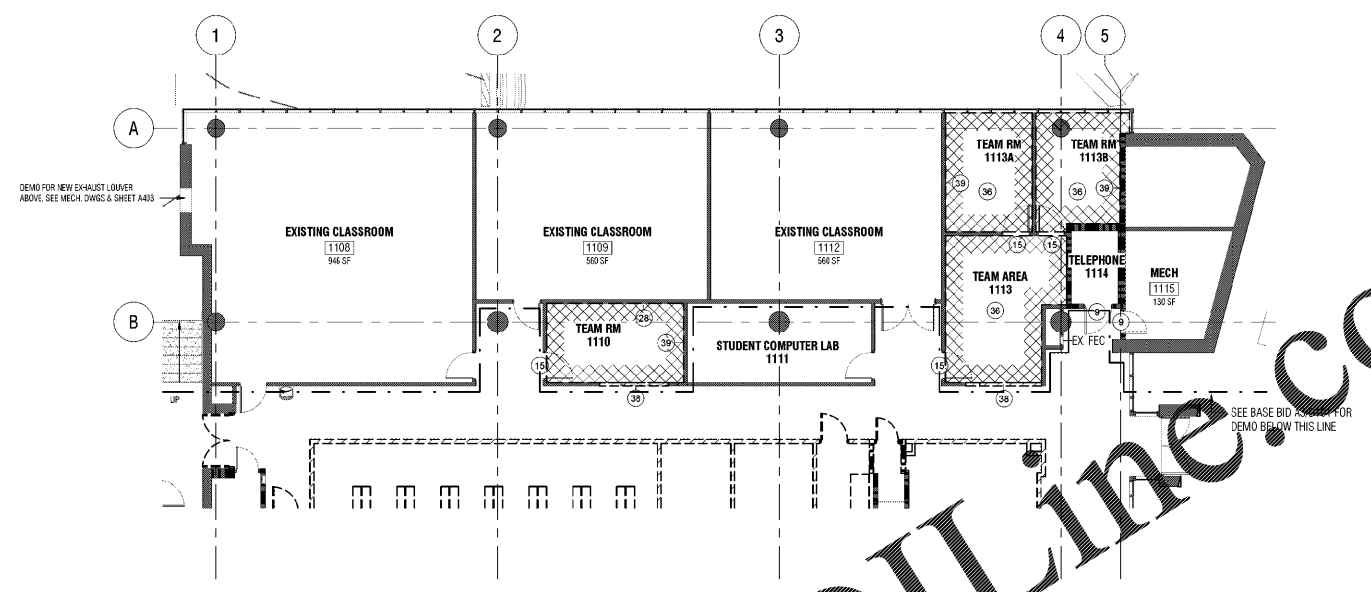


These drawings are the property of Watson Tate Savory, Inc. and may not be used in whole or in part without written consent of the architect and any other party. It is subject to legal action.



D1 DEMOLITION PLAN - LEVEL 1 ADD ALT. 1
1/8" = 1'-0"

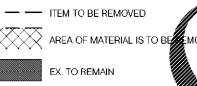
GENERAL NOTES - DEMOLITION

- A. G.C. TO PROVIDE ALL DEMOLITION DRAWINGS TO ALL TRADES FOR COORDINATION. REFER TO DIV. 40 SELECTIVE DEMOLITION SPECIFICATION PROVIDED IN THE PROJECT MANUAL, ALONG WITH DRAWINGS.
- B. DRAWINGS OF THE EXISTING BUILDING HAVE BEEN PREPARED FROM A COMBINATION OF EXISTING DRAWINGS, MEASUREMENT AND SPOT FIELD MEASUREMENTS. DIMENSIONING SURVEYOR'S DRAWINGS WITH AN INDICATION OF +/- ARE DIMENSIONS THAT SHALL BE FIELD VERIFIED BY THE CONTRACTOR. DIMENSIONS THAT ARE INDICATED AS +/- SHALL BE ADJUSTED BY THE CONTRACTOR AS NECESSARY TO COMPENSATE FOR VARIANCES IN DIMENSIONS BETWEEN THE EXISTING BUILDING AND THE NEW WORK. DIMENSIONAL VARIANCES WILL BE ENCOUNTERED, AND EACH OCCURRENCE SHALL BE BROUGHT TO THE ATTENTION OF THE ARCHITECT.
- C. REFER TO OTHER DRAWINGS, INCLUDING CIVIL, STRUCTURAL, PLUMBING, MECHANICAL, ELECTRICAL AND ENVIRONMENTAL REDEMORATION FOR OTHER DEMOLITION REQUIREMENTS. PERFORM ARCHITECTURAL DEMOLITION (INCLUDING CUTTING AND PATCHING OR REMOVAL AND RE-PLACEMENT OF ARCHITECTURAL OR STRUCTURAL BUILDING COMPONENTS) AS IS NECESSARY TO COMPLETE THE WORK SHOWN ON OTHER DRAWINGS.
- D. UNLESS OTHERWISE NOTED, REMOVE EXISTING CONSTRUCTION ON DEMOLITION PLANS THAT IS INDICATED BY A DASHED LINE. EXISTING CONSTRUCTION TO REMAIN IS INDICATED BY SOLID LINES.
- E. PATCH ALL OPENINGS IN EXISTING CONSTRUCTION, INCLUDING PARTITIONS, FLOORS, CEILING, AND EXTERIOR WALLS, RESULTING FROM THE REMOVAL OF PIPE, CONDUIT, DUCTWORK, AND SIMILAR MISCELLANEOUS ITEMS, WITH MATERIALS MATCHING EXISTING ADJACENT CONSTRUCTION. OPENINGS IN EXISTING CONSTRUCTION INDICATED TO BE FILL PATCHED SHALL BE PATCHED AND SEALED WITH MATERIALS MATCHING EXISTING CONSTRUCTION AND WHICH PROVIDE THE EQUIVALENT FIRE RESISTANCE RATINGS INDICATED ON THE LIFE SAFETY DRAWINGS.
- F. PROTECT THE EXISTING FACILITIES AT ALL TIMES DURING THE COURSE OF CONSTRUCTION. ALL DAMAGES CAUSED AS A RESULT OF CONTRACTOR ACTIVITIES, SHALL BE REPAIRED AT NO ADDITIONAL COST. CONTRACTOR SHALL COORDINATE WITH STRUCTURAL FOR BRACING AND SHORING REQUIREMENTS PRIOR TO REMOVAL OF LOAD BEARING BUILDING ELEMENTS.
- G. IN GENERAL PATCHING, REPAIR, REMODELING, AND RENOVATION WORK SHALL TO MATCH, COMPLEMENT AND ALIGN WITH EXISTING CONDITIONS.
- H. WHERE FULL OR PARTIAL DEMOLITION OF A BUILDING ELEMENT IS INDICATED, REMOVAL OF ALL ITEMS ATTACHED TO OR CONTAINED WITHIN THE ELEMENT OR PORTION OF ELEMENT TO BE DEMOLISHED SHALL BE INCLUDED IN THE DEMOLITION OF THE BUILDING ELEMENT EVEN IF NOT NOTED SPECIFICALLY. ITEMS THAT MAY BE ATTACHED TO, OR CONTAINED WITHIN, THE BUILDING ELEMENT OR PORTION OF THE BUILDING ELEMENT TO BE DEMOLISHED MAY INCLUDE BUT ARE NOT LIMITED TO CONDUIT, WIRING, SWITCHES, RECEPTACLES, JUNCTION BOXES, PIPING, DUCTWORK, GRILLES, DIFFUSERS, DOWNERS, INSULATION, FURNISHING, CASES, FINISHES, TRIMS, DOORS, DOOR FRAMES, DOOR HARDWARE, TRANSOMS, WINDOWS, WINDOW FRAMES, WINDOW HARDWARE, TOILET ACCESSORIES, CHALK BOARDS, TACK BOARDS, AND FASTENERS AND ANCHORS ASSOCIATED WITH ATTACHED ITEMS. REMOVE MECHANICAL, ELECTRICAL, AND PLUMBING ITEMS IN ACCORDANCE WITH MECHANICAL, ELECTRICAL AND PLUMBING DOCUMENTS.
- I. WHERE A WALL OR A BUILDING ELEMENT INCLUDING CHASES AND VOID SPACES (OR PORTION OF A WALL OR BUILDING ELEMENT INCLUDING CHASES AND VOID SPACES) IS INDICATED TO BE DEMOLISHED, CLEAN AND REPAIR RESULTING DAMAGE TO THE FLOOR SUBSTRATE, GROUND AND/OR FILL AND PATCH DAMAGED AREAS OF THE EXISTING FLOOR SUBSTRATE WITH A CONCRETE TOPPING SLAB OR A CEMENTITIOUS LEVING COMPOUND AS APPLICABLE. CEMENTITIOUS LEVING COMPOUND SHALL BE OF THE TYPE RECOMMENDED BY FLOOR FINISHES MANUFACTURER. FEATHER OUT FLOOR SURFACES TO FORM SMOOTH AND EVEN TRANSITIONS READY TO RECEIVE SCHEDULED FLOOR FINISHES.
- J. MISCELLANEOUS ITEMS WHICH ARE NOT SPECIFICALLY SHOWN ON THE DRAWINGS SHALL BE REMOVED IN RENOVATED AREAS, UNLESS OTHERWISE INDICATED OR DIRECTED BY THE OWNER. MISCELLANEOUS ITEMS INCLUDE BUT ARE NOT LIMITED TO FIRE EXTINGUISHERS, CLOCKS, TOILET ACCESSORIES, BRACKETS, HANGERS, SIGNETS, PLATES, BLOCKING, ETC. REFER QUESTIONABLE ITEMS TO THE OWNER FOR VERIFICATION.
- K. REMOVAL AND DISPOSAL OF IS USED GENERALLY IN DEMOLITION LEGEND, BUT SHALL BE INTERPRETED BY G.C. TO READ AND FOLLOW OWNER GUIDELINES FOR WASTE MANAGEMENT - REUSE, RECYCLING AND HAZARDOUS WASTE.

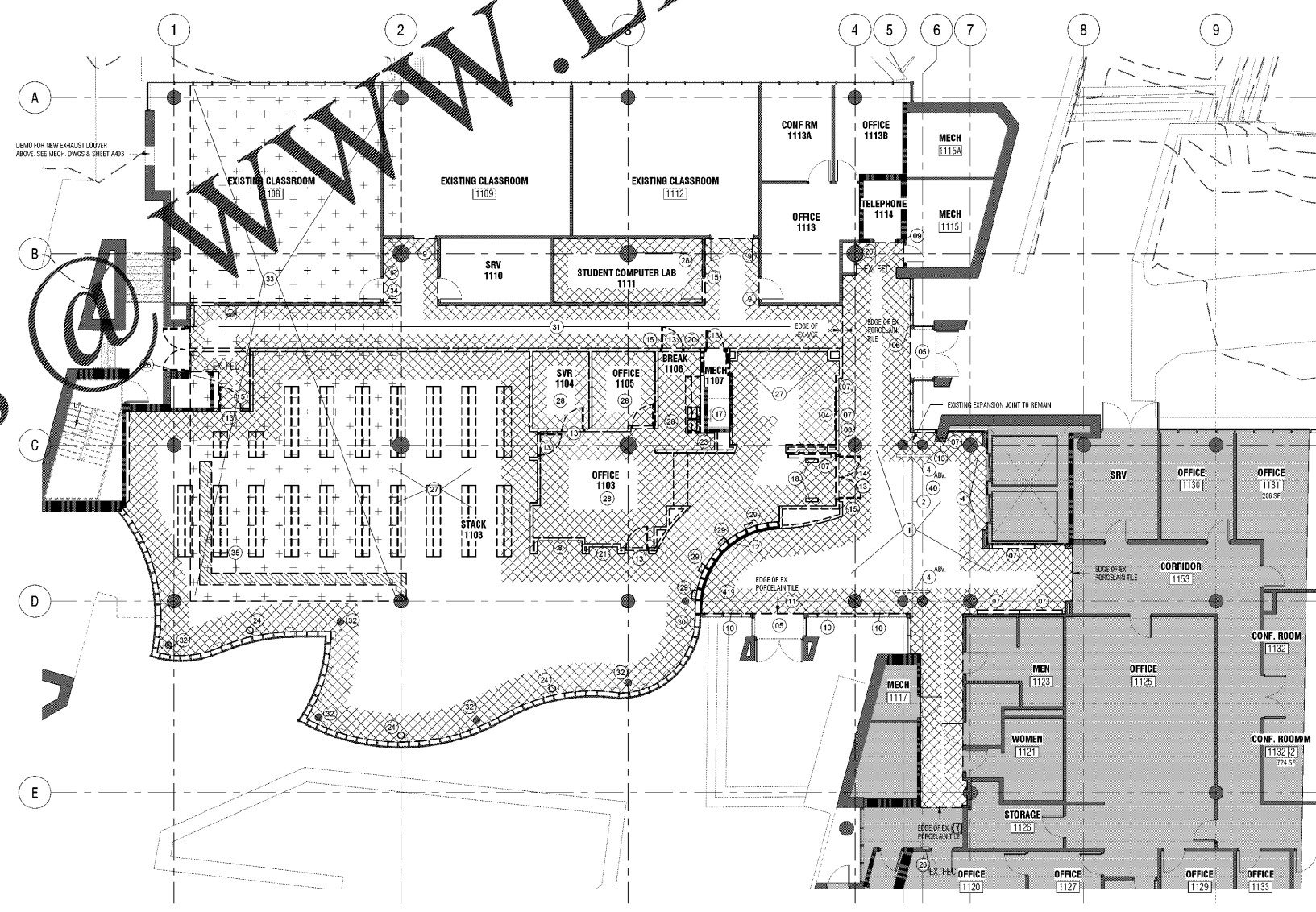
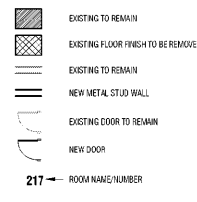
DEMOLITION LEGEND

- 1. REMOVE EXISTING CERAMIC TILE AND WOOD BASE. NOTE THAT A PORTION OF THE EXISTING FLOOR ELEVATED SLAB IS DERESSED 3" WITH A FULL MUDSET UNDERNEATH. EXISTING MUDSET MAY REMAIN AS LONG AS THE PORCELAIN TILE COMES UP CLEANLY.
- 2. EXISTING EXPANSION JOINT TO REMAIN. REMOVE PORCELAIN FROM CENTER PORTION OF EXPANSION JOINT. PROTECT METAL EXTRUSION.
- 3. EXISTING PANELING TO REMAIN. PREP/SURFACE TO FINISH WITH WAQLE FINISH.
- 4. EX. MONITOR. REMOVE AND DELIVER TO OWNER.
- 5. EX. RECESSED METAL ENTRYWAY MAT TO REMAIN. GC TO COVER/PROTECT OR REMOVE/STORE FOR LATER REINSTALLATION BY GC DURING CONSTRUCTION. DAMAGE TO MATS SHALL RESULT IN GC REPLACING AT THEIR OWN COST.
- 6. ADD ALTERNATE 3B. EX. AUTOMATIC DOOR OPENER/PUSH PLATE TO BE REMOVED FROM NORTH FACE OF MULLION FOR RELOCATION TO WEST FACE OF EAST MULLION. REMOVE EXPOSED CONDUIT BACK TO WHERE IT IS CONCEALED IN WALL TO ALLOW FOR INSTALLATION OF THE VESTIBULE AND MORE AESTHETIC RE-ROUTING OF CONDUIT.
- 7. EX. VISUAL DISPLAY CASE TO BE REMOVED BY GC AND PROVIDED TO OWNER.
- 8. REMOVE EX. WALL, INCLUDING DEVICES, INCLUDING ELEC, MECHANICAL, TEL, DATA AND SIGNAGE.
- 9. EX. DAMAGE TO REMAIN. CAREFULLY REMOVE, STORE AND PROTECT AS REQUIRED FOR REINSTALLATION BY GC.
- 10. EX. FLOOR DIFFUSER. REMOVE AND DISPOSE OF FOR REPLACEMENT WITH NEW TO MATCH.
- 11. EX. AUTO DOOR OPENER PUSH PAD TO REMAIN. PROTECT DURING CONSTRUCTION.
- 12. REMOVE AND DISPOSE OF INTERIOR CURTAIN/WALL ASSEMBLY INCLUDING GLASS, MULLIONS, ASSOCIATED BRACING AND METAL FILL AS INDICATED.
- 13. REMOVE AND DISPOSE OF DOOR, INCLUDING FRAME, HARDWARE AND ANY ASSOCIATED LITES/GLAZES.
- 14. REMOVE AND DISPOSE OF EX. WOOD PANELING.
- 15. REMOVE AND DISPOSE OF EX. SIGNAGE.
- 16. EX. DIRECTORY TO REMAIN. CAREFULLY REMOVE, STORE AND PROTECT FOR LATER REINSTALLATION BY GC OR PROTECT.
- 17. EX. ESCAPE HATCH FROM MECHANICAL ROOM BELOW AND FLOOR OPENING TO REMAIN. WITH WALL TO BE MOVED CLOSER TO OPENING, GC TO PROVIDE LOCKABLE PLYWOOD ENCLOSURE PREVENTING ACCESS TO OPENING.
- 18. REMOVE AND DISPOSE OF EX. LIBRARY SECURITY GATES WITH ASSOCIATED POWER AND EQUIPMENT.
- 19. REMOVE EX. LOW WALL.
- 20. REMOVE, STORE AND PROTECT EX. BOOM DEPOSURE BODY. GC TO REINSTALL AT NEW LOCATION DURING CONSTRUCTION.
- 21. REMOVE AND DISPOSE OF INTERIOR WALL.
- 22. REMOVE AND DISPOSE OF WALL BASE EXCEPT SHELVING AND STANDARDS. REMOVE EX. FLOOR SLAB DEMO.
- 23. REMOVE AND DISPOSE OF WALL, SHALF AND VOID. REMOVE AND DISPOSE OF ABANDONED EQUIPMENT.
- 24. EXISTING FALSE CEILING AND TYPICAL ROOF DRAIN TO REMAIN. PROTECT DURING CONSTRUCTION.
- 25. REMOVE AND DISPOSE OF EX. CIRCULATION DESK.
- 26. REMOVE AND DISPOSE OF EX. CIRCULATION DESK.
- 27. REMOVE AND DISPOSE OF EX. CARPET AND WOOD BASE (NO BASE AT CURTAINWALL).
- 28. REMOVE AND DISPOSE OF EX. CARPET AND RESILIENT BASE (NO BASE AT CURTAINWALL).
- 29. REMOVE EX. FLOOR DIFFUSERS WITH ASSOCIATED DUCTWORK & SURFACE MOUNTED OUTLETS/ROCKETS AND CONDUIT. COVER AND PROTECT OPENING IN FLOOR AFTER REMOVAL, BEFORE THEY ARE FILLED IN WITH CONCRETE IN NEW CONSTRUCTION.
- 30. EX. FLOOR DIFFUSERS TO REMAIN. COVER AND PROTECT DURING DEMOLITION AND CONSTRUCTION.
- 31. REMOVE AND DISPOSE OF EX. VOT FLOORING AND RESILIENT BASE.
- 32. EX. PLASTERED COLUMN COVER TO BE CAREFULLY AND SELECTIVELY DEMO TO ROUTE NEW CONDUIT DOWN FROM ABOVE. SEE DETAIL B14000.
- 33. EX. SLAB ON GRADE AT PERIMETER OF RETAINING WALL FROM MECHANICAL ROOM BELOW. SLAB HAS SETTLED +/- 1.6 IN. COORDINATE TRENCHING VS. FOAM JACKING w/ CONTRACTORS.
- 34. FLOOR IN THIS AREA REQUIRES GRINDING, GRIND & COORDINATE w/ FOAM JACKING ELEVATIONS.
- 35. TRENCH OUT THE EX. SOG FOR FLOOR BOX INSTALLATION.
- 36. REMOVE AND DISPOSE OF EX. CARPET FLOORING AND WALL BASE.
- 37. EX. PULL STATION TO REMAIN.
- 38. REMOVE EX. WALL FOR WINDOW ROUGH OPENING.
- 39. REMOVE SHEETROCK TO SET BLOCKING IN TO MOUNT MONITOR. COORDINATE WITH FINAL AV SIZE AND EX. FRAMING LOCATION.
- 40. CORE SLAB FOR INSTALLATION OF RATED FLOOR BOXES. COVER OPENINGS AFTER COVER IF BOXES ARE NOT INSTALLED IMMEDIATELY.
- 41. EXISTING SCULPTURE TO BE REMOVED BY OWNER PRIOR TO CONSTRUCTION.

DEMOLITION KEY

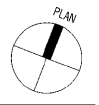


DEMO PLAN SYMBOL LEGEND



A3 DEMOLITION PLAN - LEVEL 1 BASE BID
1/8" = 1'-0"

LIBRARY RENOVATION - JORDAN HALL
N.C. STATE UNIVERSITY
RALEIGH, NC



ISSUE DATE:	08/24/2020	
PHASE:	BID SET	
#	DATE	REVISION

DEMOLITION PLAN - LEVEL 1

19-20653
STATE PROJECT NO.
NCSU #201920018
A/E PROJECT NO.
058
NCSU FACILITIES NO. SHEET

D101

Order Plans