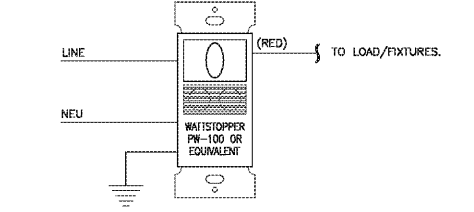
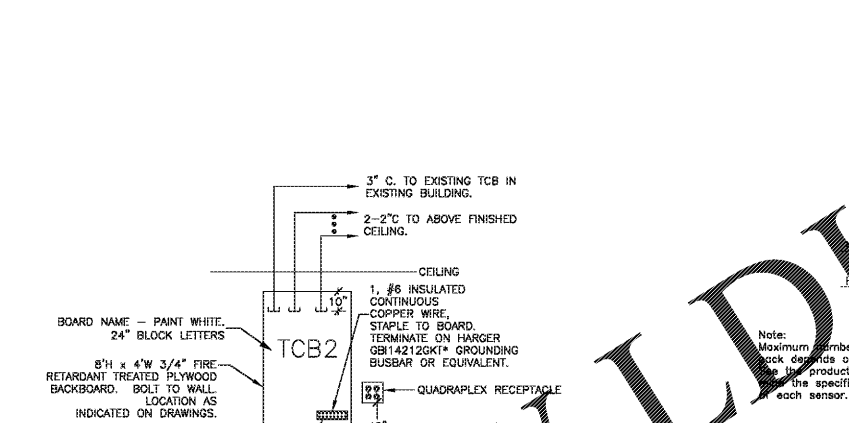
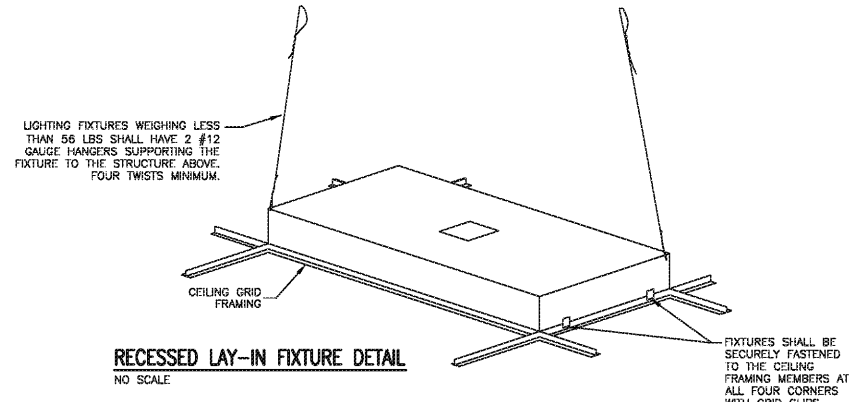


THIS DRAWING AND THE DESIGN SHOWN THEREON ARE THE PROPERTY OF JEFF LEWIS, AIA. THE REPRODUCTION, COPYING OR OTHER USE OF THIS DRAWING WITHOUT WRITTEN CONSENT OF JEFF LEWIS AIA IS PROHIBITED AND INFRINGEMENTS WILL BE SUBJECT TO LEGAL ACTION.

**LIGHT FIXTURE SCHEDULE**

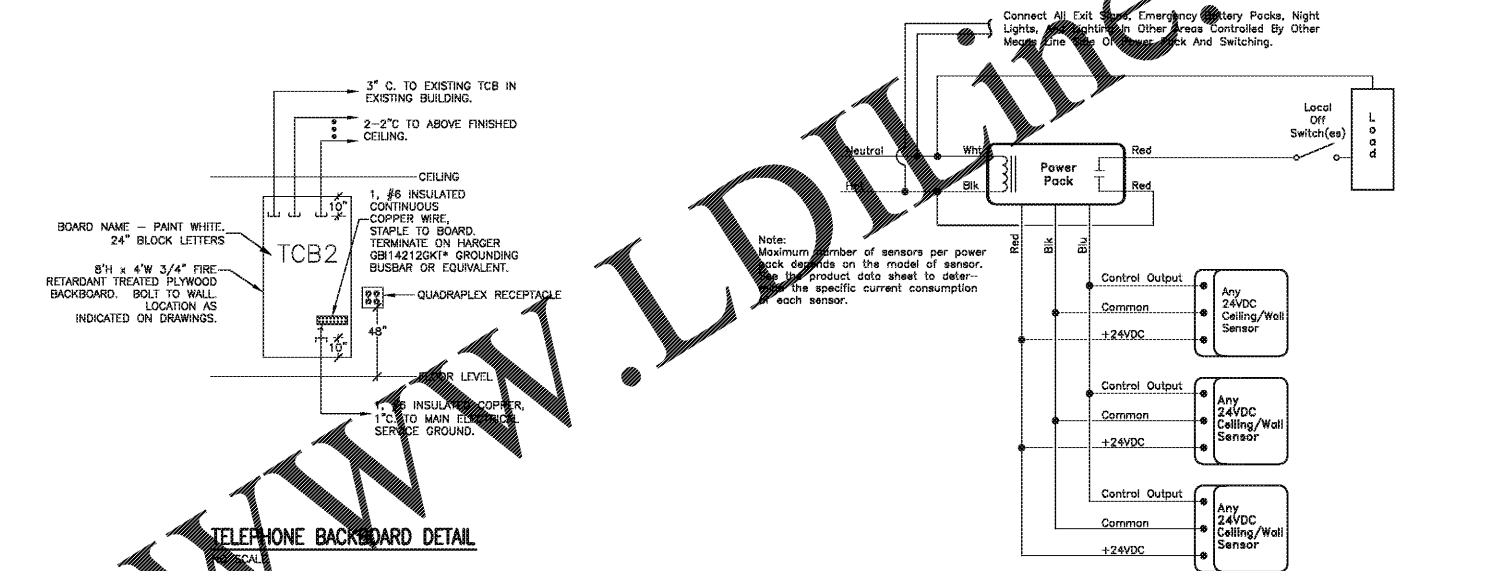
TYPE	DESCRIPTION	CATALOG NUMBER	LAMPS	WATTAGE	NOTES
A30	2'x4' LED TROFFER WITH SMOOTH LENS.	METALUX CRUZE #24CZ-LD4-30-S-UNV-LB35-C01-U OR EQUAL BY HUBBELL #LCAT SERIES	LED BY MFR	24.56W	-
A40	2'x4' LED TROFFER WITH SMOOTH LENS.	METALUX CRUZE #24CZ-LD4-40-S-UNV-LB35-C01-U OR EQUAL BY HUBBELL #LCAT SERIES	LED BY MFR	33.38W	-
A50	2'x4' LED TROFFER WITH SMOOTH LENS.	METALUX CRUZE #24CZ-LD4-50-S-UNV-LB35-C01-U OR EQUAL BY HUBBELL #LCAT SERIES	LED BY MFR	44.53W	-
A60	2'x4' LED TROFFER WITH SMOOTH LENS.	METALUX CRUZE #24CZ-LD4-60-S-UNV-LB35-C01-U OR EQUAL BY HUBBELL #LCAT SERIES	LED BY MFR	56.15W	-
A70	2'x4' LED TROFFER WITH SMOOTH LENS.	METALUX CRUZE #24CZ-LD4-70-S-UNV-LB35-C01-U OR EQUAL BY HUBBELL #LCAT SERIES	LED BY MFR	68.77W	-
C2	4' LED STRIPLIGHT, MOUNT WITH Y-HANGERS AND CHAINS, 3200 LUMENS.	WILLIAMS #76-4-L32/08#-DRV-120 EMERGENCY OPTION: #EM/10W OR EQUAL BY METALUX, VISIONEERING	LED BY MFR	28W	COORDINATE MOUNTING HEIGHT WITH EQUIPMENT IN ROOM. MOUNT 8'-6" MINIMUM IN MECH AND ELEC ROOMS.
D1	6" ROUND RECESSED LED FIXTURE, 2000 LUMENS.	HALO #PD620D010-PDM6A8#-61VC EMERGENCY OPTION: #EM WITH 61VCEM OR EQUAL BY SPECTRUM LIGHTING	LED BY MFR.	21W	-
F	2' LED CEILING/WALL MOUNT, 120V.	METALUX #28CLED-LD4BSLF-120 OR EQUAL BY DECO #DACH-LED SERIES	LED BY MFR.	10W	MOUNT ABOVE DOOR JAMB. COORDINATE MOUNTING HEIGHT WITH ARCHITECTURAL ELEVATIONS.
H	EXTERIOR LED WALL PACK, FULL CUTOFF, WET LABEL.	LUMARK #XTOR1B-W** OR EQUAL BY BEAM-LITE INDUSTRIES.	LED BY MFR.	12W	COORDINATE MOUNTING HEIGHT WITH ARCHITECTURAL EXTERIOR ELEVATIONS. FINAL MOUNTING HEIGHT SHALL BE APPROVED BY ARCHITECT.
M	DECORATIVE LED WALL SCENCE, OUTDOOR, WET LABEL. ** FIXTURE TO MATCH EXISTING EXTERIOR SCENCES.	LIGHTWAY #MNM-918-LED-8-U-11W-3-WSA	LED BY MFR.	30W	COORDINATE MOUNTING HEIGHT WITH ARCHITECTURAL EXTERIOR ELEVATIONS. FINAL MOUNTING HEIGHT SHALL BE APPROVED BY ARCHITECT.
N	4FT LED WALL FIXTURE, ADJUSTABLE AIM WALL BRACKET, 0-10V DIMMING.	VIVO LED #WDS2BIP-W-30-LV-**-RS OR EQUAL BY I-2 SYSTEMS	BY MFR.	40W	COORDINATE MOUNTING HEIGHT WITH ARCHITECTURAL EXTERIOR ELEVATIONS. FINAL MOUNTING HEIGHT SHALL BE APPROVED BY ARCHITECT.
P	30" LED DECORATIVE PENDANT SUSPENDED BOWL.	SFR LIGHTING #APB210-L57W-U SERIES	LED BY MFR.	57W	COORDINATE MOUNTING, SUSPENSION HEIGHT, AND COLOR WITH ARCHITECT.
P4	1'x4' LED TROFFER.	CORELITE DW4E #DSI-WS-2L35-10-UNV-4 OR EQUAL BY METALUMEN	LED BY MFR.	31.8W	-
X1	CEILING MOUNTED LED "ISOLATION ROOM ACTIVE" SPECIALTY SIGNAGE.	COOPER #CI SERIES *COLOR TO BE DETERMINED BY ARCHITECT OR EQUAL BY LIGHTRAMS	BY MFR.	1.2W	CEILING MOUNTED ABOVE BOOR SIGNAGE SHALL INTERLOCKED WITH EXHAUST FAN SWITCH.
EXIT	LED EXIT LIGHT WITH 90 MINUTE MINIMUM BATTERY BACKUP. ARROW HEAD DENOTES DIRECTION OF EXIT (TYP). "EXIT" DENOTES WET LOCATION.	LITHONIA #LQM S ** 120/277 EL. N * HOUSING AND LETTERING COLOR AS DIRECTED BY ARCHITECT. "EXIT" = #LITE SERIES OR EQUAL BY SURE-LITES, COMPASS	BY MFR.	0.7W	CONNECT TO LINE SIDE OF ANY SWITCHING. FACES, AND MOUNTING AS INDICATED ON PLANS.
EGRESS	LED EXIT LIGHT AND REMOTE LED EGRESS FIXTURE. MINIMUM 90 MINUTE RATING.	LITHONIA #LHM LED ** HO RO REMOTE HEAD: ELA T QWP L0309 * HOUSING AND LETTERING COLOR PER ARCH. OR EQUAL BY SURE-LITES, COMPASS	BY MFR.	3.3W	CONNECT TO LINE SIDE OF ANY SWITCHING. FACES, AND MOUNTING AS INDICATED ON PLANS.

- OTHER MANUFACTURERS ACCEPTABLE WITH PRIOR APPROVAL OF ENGINEER.
- ALL HALF-SHADED FIXTURES AND FIXTURES LABELED "EM" SHALL BE EQUIPPED WITH EMERGENCY BATTERY BACKUP.
- FIXTURE COLOR TEMPERATURES AS DIRECTED BY ARCHITECT OR OWNER.
- CONNECT EXIT SIGNS UNSWITCHED TO LIGHTING CIRCUIT SERVING AREA.
- FIXTURES NOTED WITH "E" DESIGNATION SHALL BE POWERED THROUGH A MICRO-INVERTER, BODINE ELJ-S-20 OR EQUIVALENT. REMOTE MOUNT INVERTERS IN INTERIOR SPACE NEAREST FIXTURE BEING SERVED. LABEL EACH TO LOAD SERVED. CONDUCTORS LOAD SIDE OF INVERTERS SHALL NOT SHARE RACEWAY WITH NORMAL POWER CONDUCTORS.



**AUTOMATIC WALL SENSOR SWITCH TYPICAL SINGLE RELAY WIRING SCHEMATIC**  
NO SCALE

NOTE 1: SCHEMATIC IS REPRESENTATIVE OF WATTSTOPPER PW-100 AND DSW-100. CONNECTION REQUIREMENTS AND WIRING CODING MAY DIFFER BETWEEN MANUFACTURERS. FOLLOW MANUFACTURERS INSTALLATION INSTRUCTIONS. FOLLOW WHERE APPLICABLE. CONNECT EXIT SIGNS, BATTERY PACKS FOR EGRESS LIGHTING, AND NIGHT LIGHTS LINE SIDE OF AUTOMATIC WALL SWITCH SENSORS.

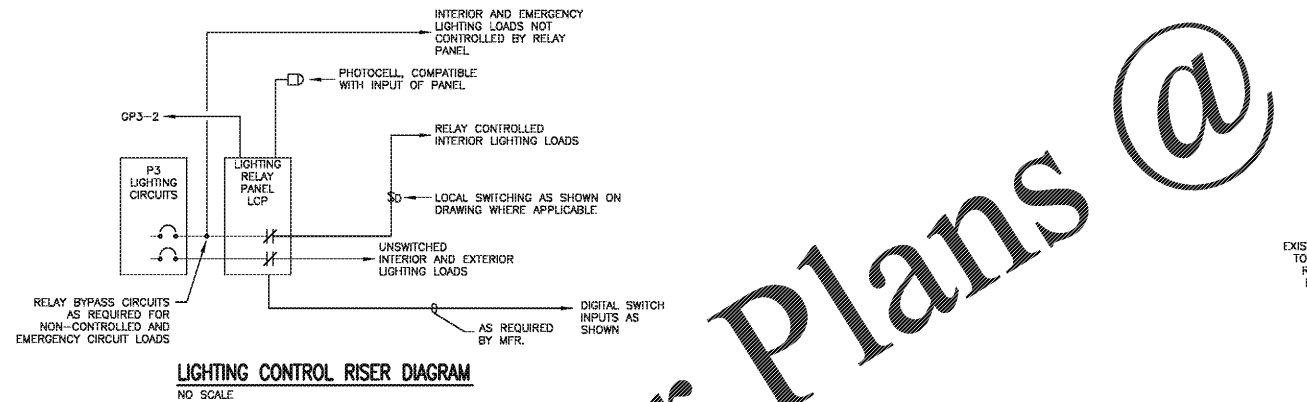


**CEILING MOUNT OCCUPANCY SENSOR TYPICAL WIRING SCHEMATIC FOR LOW VOLTAGE SENSOR**  
NO SCALE

NOTE 1: SCHEMATIC IS REPRESENTATIVE OF WATTSTOPPER DT-300/305. CONNECTION REQUIREMENTS AND LOW VOLTAGE TOPOLOGY MAY DIFFER BETWEEN MANUFACTURERS. FOLLOW MANUFACTURERS INSTALLATION INSTRUCTIONS.

NOTE 2: WHERE APPLICABLE, CONNECT EXIT SIGNS, BATTERY PACKS FOR EGRESS LIGHTING, AND NIGHT LIGHTS LINE SIDE OF AUTOMATIC WALL SWITCH SENSORS.

NOTE 3: PROVIDE QUANTITY OF POWER PACKS AS REQUIRED TO SERVE LOADS AS INDICATED ON DRAWINGS, WHERE MULTIPLE BRANCH CIRCUITS SERVE THE SAME AREA, PROVIDE SEPARATE POWER PACKS FOR EACH BRANCH CIRCUIT AND PHASE.



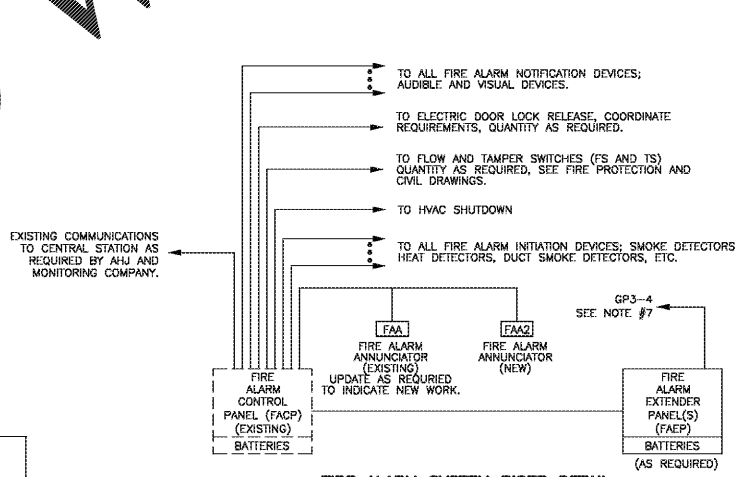
- PROVIDE COMPLETE LIGHTING CONTROL SYSTEM IN ACCORDANCE WITH IBC ENERGY CODE (IECC).
- RELAY PANEL SHALL BE PRE-ASSEMBLED AND IN COMPLIANCE WITH UL508 AND UL816 AND INSTALLED IN ACCORDANCE WITH NEC AND MANUFACTURER INSTRUCTIONS.
- RELAYS SHALL HAVE NORMAL CLOSED CONTACTS RATED AT 20A AND VOLTAGES INDICATED FOR INCANDESCENT, FLUORESCENT AND HID LOADS.
- PROVIDE PANEL WITH MINIMUM 24 CHANNEL 365/ASTRO CLOCK, AND PHOTO SENSOR INPUT. INCLUDE CENTRAL PHOTO CONTROL DEVICE, LOCAL PHOTO CONTROL DEVICE, AND NIGHT PHOTO CONTROL DEVICE.
- PANELS, SWITCHES AND ALL OTHER ACCESSORIES SHALL BE PRE-PROGRAMMED AT FACTORY OR BY FACTORY REPRESENTATIVE. A FACTORY REPRESENTATIVE SHALL VISIT THE SITE FOR START-UP AND TO ADJUST THE SCHEDULES TO MATCH THE OFFICER'S REQUIREMENTS. PROVIDE MINIMUM 2 HOURS TRAINING TO OWNER AT A TIME CONVENIENT FOR THE OWNER. ELECTRICAL CONTRACTOR SHALL COORDINATE AND SCHEDULE START-UP AND TRAINING WITH OWNER AND MANUFACTURER.
- ALL LIGHTING CIRCUITS SHALL BE ROUTED THROUGH RELAY PANELS. PROVIDE RELAYS TO SUIT CIRCUITS INDICATED, INCLUDING SPARE RELAYS FOR FUTURE USE. PROVIDE ADDITIONAL HOT (CONTACTOR/RELAY BYPASS) CONDUCTORS IN CIRCUITS AS REQUIRED FOR EMERGENCY UNITS AND NIGHT LIGHTING FIXTURES.
- SUBMIT JOB SPECIFIC SHOP DRAWINGS INDICATING EQUIPMENT LOCATIONS, SCHEDULES, SINGLE LINE DRAWINGS AND ALL REQUIRED RACEWAY AND CONDUCTOR REQUIREMENTS.
- CAREFULLY EXAMINE PLANS AND PROVIDE A COMPLETE OPERABLE LIGHTING CONTROL SYSTEM FOR ALL LIGHTING INDICATED. PROVIDE ALL RELAY CABINETS, CONTROLLERS, INPUT DEVICES, SOFTWARE, PROGRAMMING AND THE LIKE AS REQUIRED FOR A COMPLETE SYSTEM. CONTRACTOR SHALL PROVIDE ALL CONTROL AND INTERLOCK WIRING AS REQUIRED TO SUIT LIGHTING CONTROL SYSTEM FURNISHED.
- LIGHTING CONTROL PANEL TO HAVE USER INTERFACE ON PANEL FRONT.
- LIGHTING CONTROL SYSTEM IS INTENDED TO BE USED WITH DIGITAL SWITCH(ES).
- LIGHTING CONTROLS SHALL BE MANUFACTURED BY LEVITON, LUTRON, WATT-STOPPER OR APPROVED EQUAL.
- DIGITAL SWITCHES SHALL BE PROVIDED AS PART OF A PACKAGE WITH LIGHTING CONTROL PANEL. SWITCHES SHALL BE AS REQUIRED TO TURN ON/OFF LIGHTING CIRCUITS SERVING EACH DESIGNATED AREA AS DESCRIBED IN SCHEDULE AND ON DRAWINGS.

RELAY #	CIRCUIT	SWITCH NAME (BUTTON)	ADDITIONAL CONTROLS	SCHEDULE	NOTES
1	GP3-17	DS1(1), DS2(3), DS5(3), DS8(2)		CLOCK	1
2	GP3-5	DS3(1), DS2(1), DS4(2), DS5(2)		CLOCK	1
3	GP3-1	DS4(1), DS5(1), DS2(2), DS3(2)		CLOCK	1
4	GP3-9	DS8(1), DS7(1)		CLOCK	1
5	GP3-19			PHOTO/CLOCK	1
6	GP3-17	DS1(2), DS8(1)			
7	SPARE				
8	SPARE				

GENERAL NOTE: ALL EMERGENCY LIGHTING SHALL BE CIRCUIT LINE SIDE OF ANY RELAYS AND SWITCHING. PROVIDE INTERFACE WITH FIRE ALARM CONTROL PANEL TO TURN ON ALL RELAYS IN EVENT OF FIRE ALARM.

NOTE 1: COORDINATE WITH OWNER FOR ON/OFF TIMES. CONFIGURE TO RETURN RELAYS TO SCHEDULED POSITION ON RETURN OF POWER TO LCP.

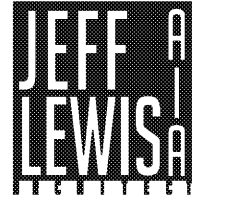
SWITCH NAME	SWITCH TYPE
DS1	DIGITAL 2 BUTTON
DS2	DIGITAL 3 BUTTON
DS3	DIGITAL 2 BUTTON
DS4	DIGITAL 2 BUTTON
DS5	DIGITAL 3 BUTTON
DS6	DIGITAL 1 BUTTON
DS7	DIGITAL 1 BUTTON
DS8	DIGITAL 2 BUTTON
PHOTO	PHOTOCELL
CLOCK	BUILT IN CLOCK



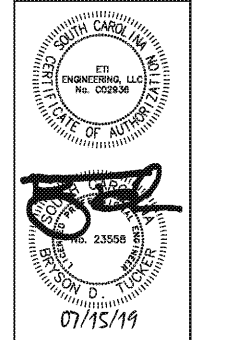
**FIRE ALARM SYSTEM RISER DETAIL**  
NO SCALE

NOTES TO FIRE ALARM RISER DIAGRAM:

- ALL CABLING SHALL BE INSTALLED IN CONDUIT.
- FIRESTOP ALL CONDUITS THROUGH FIRE RATED FLOORS, FIREWALLS AND RATED CEILINGS.
- ALL MECHANICAL UNITS SHALL SHUT DOWN WITH ACTIVATION OF FIRE ALARM SYSTEM.
- PROVIDE OUTPUTS IN FIRE ALARM SYSTEM, MATERIALS, PROGRAMMING AND OTHER WORK REQUIRED FOR THE OPERATION OF SMOKE AND FIRE/SMOKE DAMPERS FURNISHED BY THE MECHANICAL CONTRACTOR.
- APPROVAL AND PERMIT TO BE OBTAINED FROM AHJ PRIOR TO STARTING ANY WORK.
- FIRE ALARM SYSTEM SHALL BE UL CERTIFICATED WHERE REQUIRED BY AHJ.
- PROVIDE ALL WORK AND MATERIALS AS REQUIRED FOR CENTRAL STATION MONITORING INCLUDING COMMUNICATIONS LINES AND CONNECTIONS.
- LABEL CIRCUIT BREAKER FEEDING PANEL AND PROVIDE LOCKING PROVISION PER NFPA 72.
- UPGRADE MAIN CONTROL PANEL AS REQUIRED TO PROVIDE 20% SPARE CAPACITY FOR NOTIFICATION AND INITIATING DEVICES AT COMPLETION OF CONSTRUCTION.
- ALL CABLING SHALL BE ROUTED THROUGH EXISTING STRUCTURE.
- SEE SPECIFICATIONS 283100.



581 JACOBS MILL POND ROAD  
ELGIN, SOUTH CAROLINA 29945  
803 950 5028 / jeff@jefflewis.com



LUGOFF FACILITY EXPANSION  
SANDHILLS MEDICAL FOUNDATION  
28 BALDWIN AVENUE  
LUGOFF, SOUTH CAROLINA 29078

REV.	DATE	DESCRIPTION
1	08.21.20	BID SET

JOB #16-039-1 07.15.2019

**E0.1**

Engineering, LLC  
5726 South River Road  
Columbia, SC 29912  
803 233 2306 (Phone)  
803 233 4311 (Fax)  
info@eticons.com

Project Manager  
Troy Lander 4/05  
ETI #9112-10/05