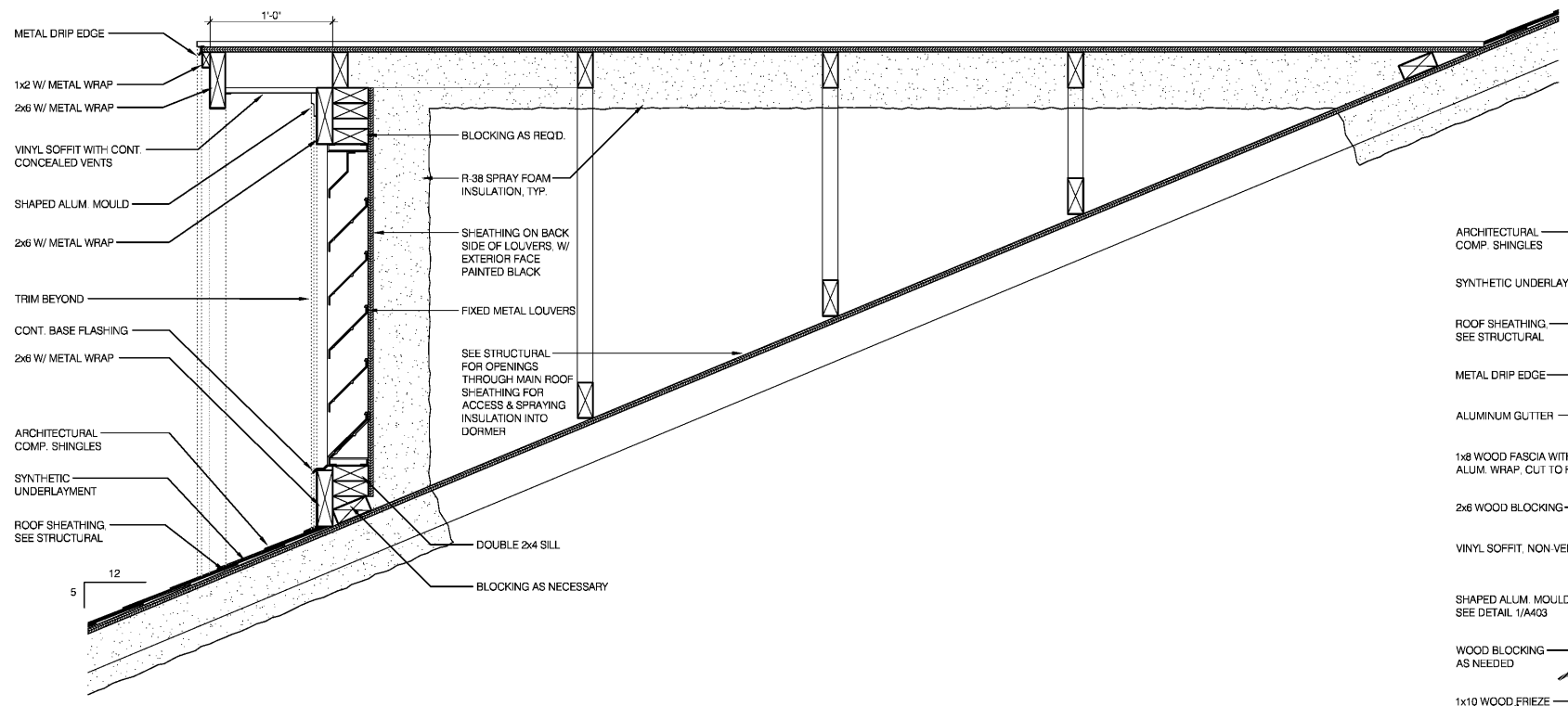
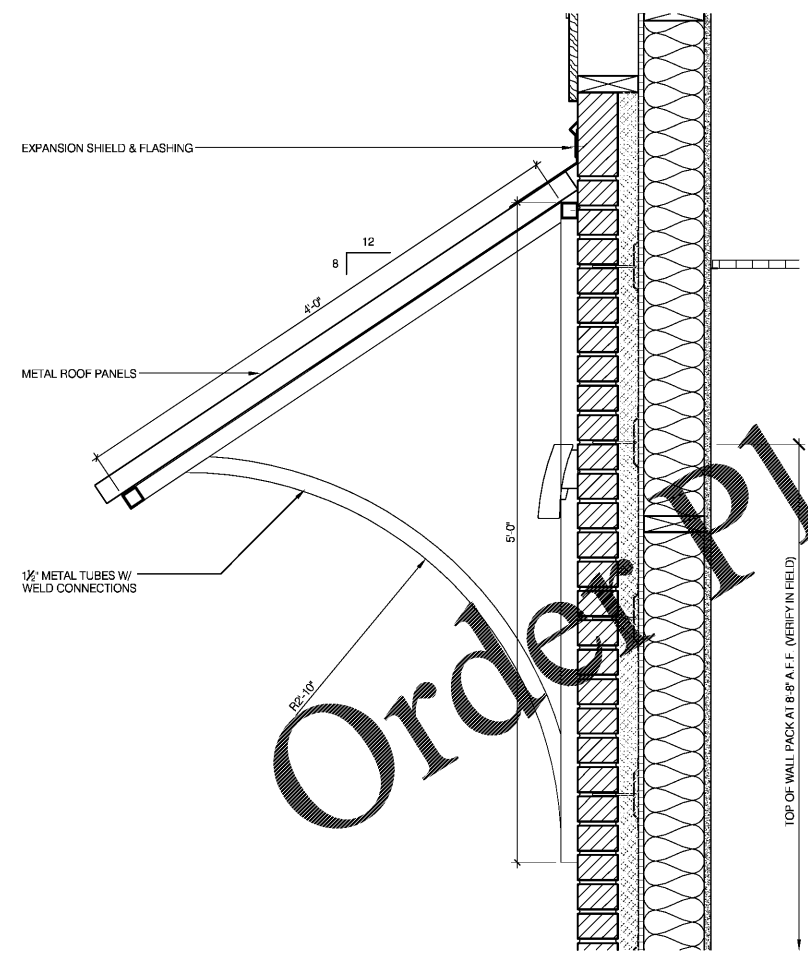


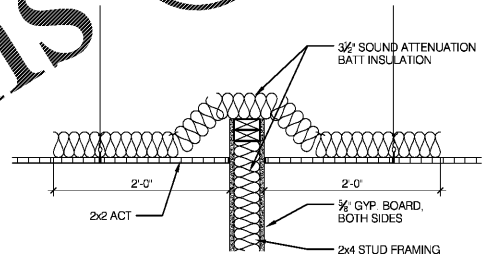
THIS DRAWING AND THE DESIGN SHOWN THEREON ARE THE PROPERTY OF JEFF LEWIS, AIA. THE REPRODUCTION, COPYING OR OTHER USE OF THIS DRAWING WITHOUT WRITTEN CONSENT OF JEFF LEWIS AIA IS PROHIBITED AND INFRINGEMENTS WILL BE SUBJECT TO LEGAL ACTION.



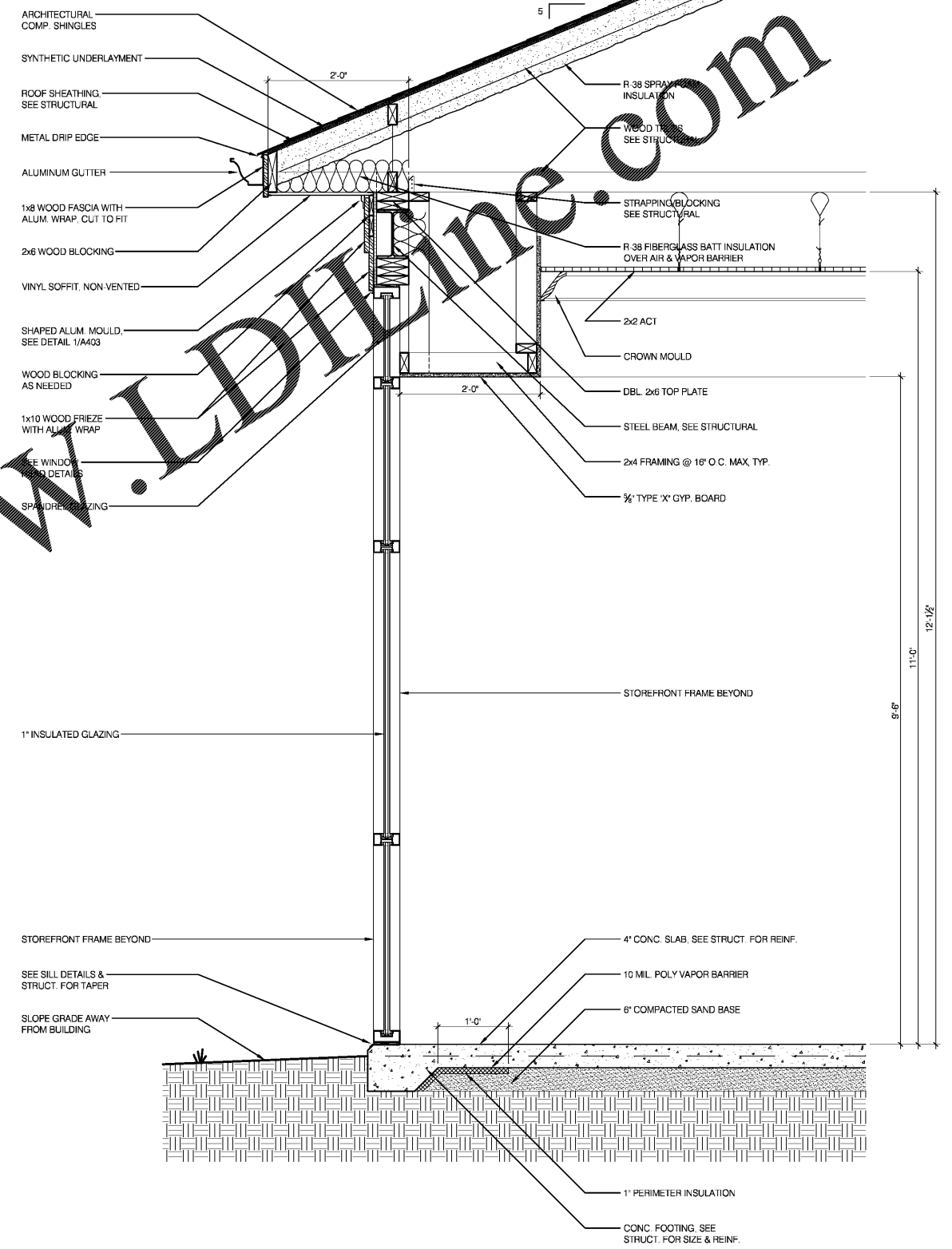
1 TYPICAL SECTION THRU EYEBROW VENT
A407 1 1/2" = 1'-0"



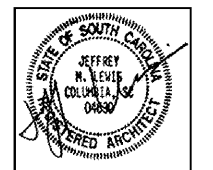
2 METAL CANOPY DETAIL
A407 1 1/2" = 1'-0"



3 SOUND BATT INSULATION DETAIL
A407 1" = 1'-0"



4 WALL SECTION THRU CENTRAL LOBBY WINDOWS
A407 1" = 1'-0"



LUGOFF FACILITY EXPANSION
SANDHILLS MEDICAL FOUNDATION
28 BALDWIN AVENUE
LUGOFF, SOUTH CAROLINA 29078

SECTIONS & DETAILS

REV.	DATE	DESCRIPTION
1	08/17/20	NOTES