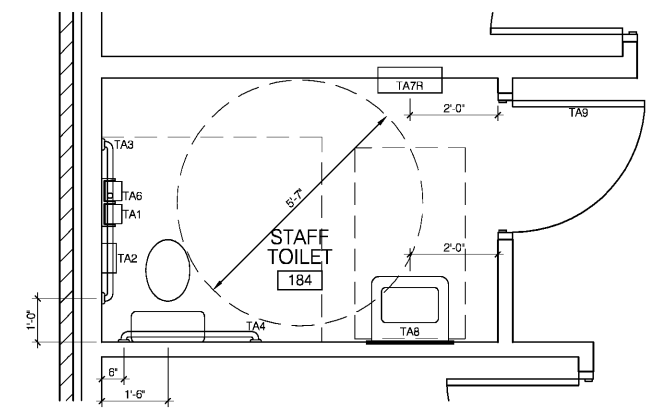
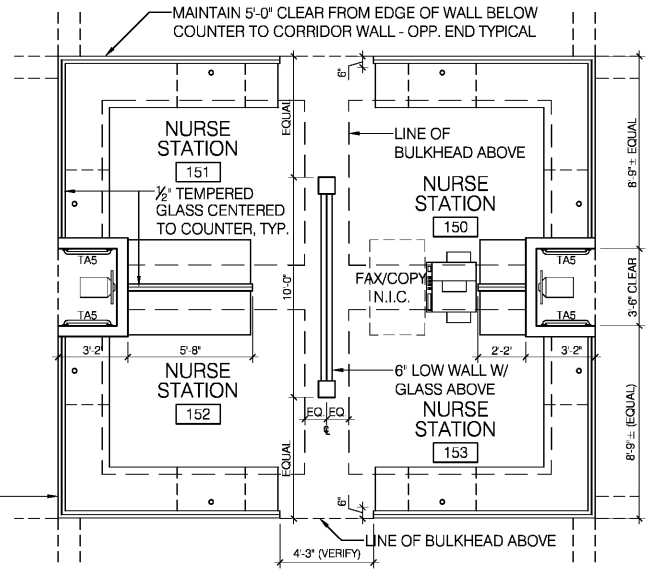


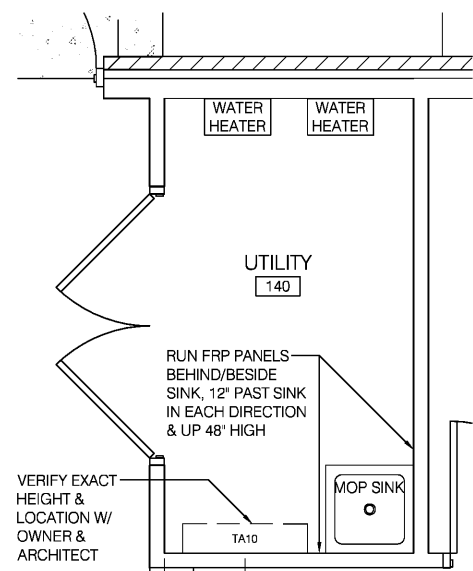
THIS DRAWING AND THE DESIGN SHOWN THEREON ARE THE PROPERTY OF JEFF LEWIS, AIA.-THE REPRODUCTION, COPYING OR OTHER USE OF THIS DRAWING WITHOUT WRITTEN CONSENT OF JEFF LEWIS AIA IS PROHIBITED AND INFRINGEMENTS WILL BE SUBJECT TO LEGAL ACTION.



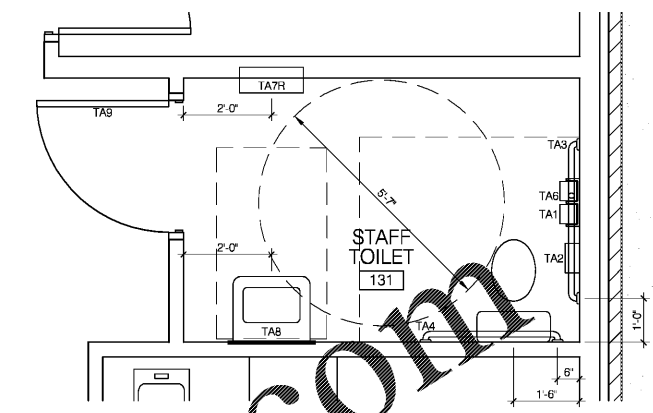
1 ENLARGED TOILET PLAN
A301 1/2" = 1'-0"



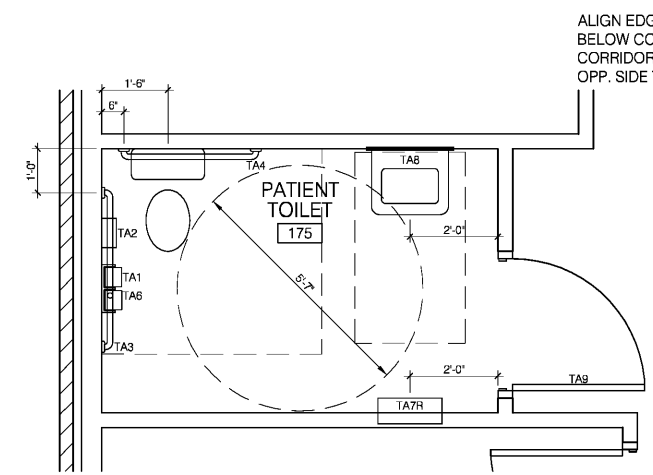
2 ENLARGED NURSE STATION PLAN
A301 1/4" = 1'-0"



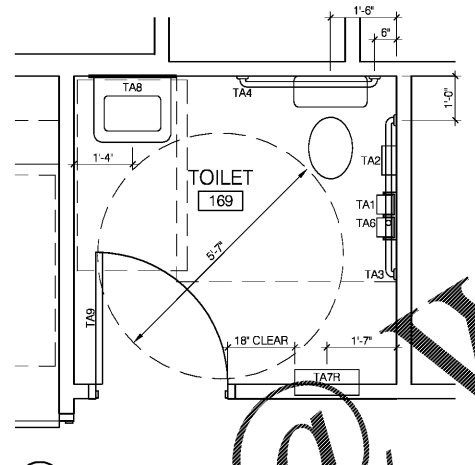
3 ENLARGED UTILITY PLAN
A301 1/2" = 1'-0"



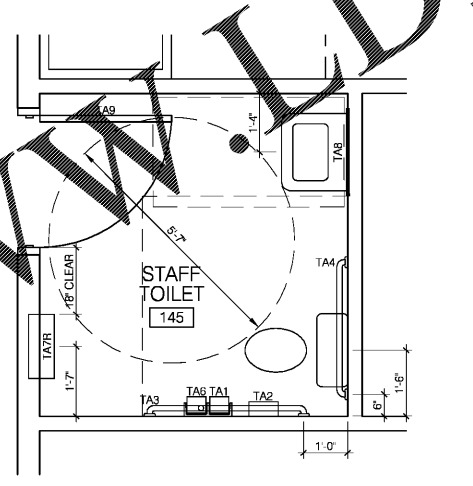
4 ENLARGED TOILET PLAN
A301 1/2" = 1'-0"



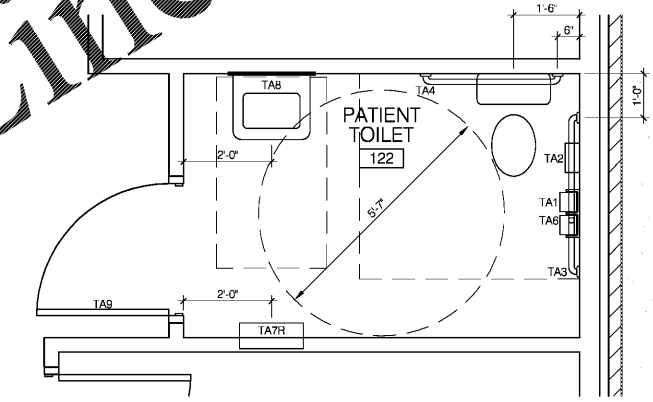
5 ENLARGED TOILET PLAN
A301 1/2" = 1'-0"



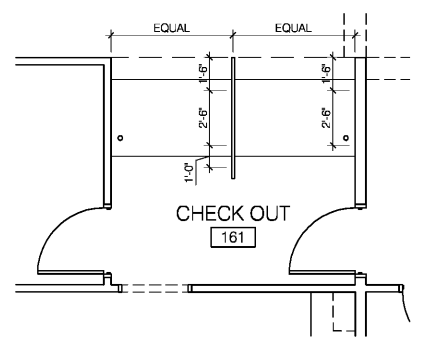
6 ENLARGED TOILET PLAN
A301 1/2" = 1'-0"



7 ENLARGED TOILET PLAN
A301 1/2" = 1'-0"



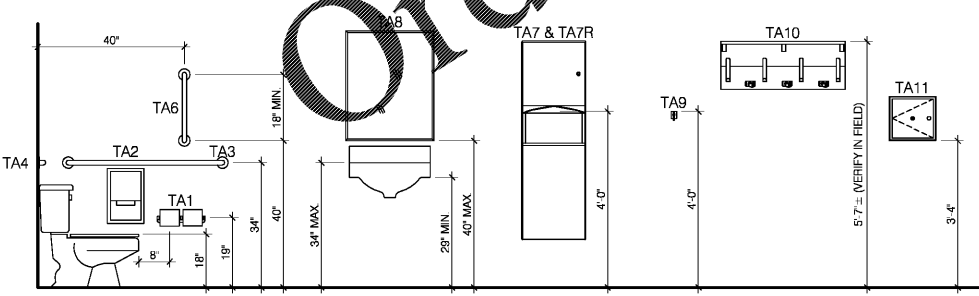
8 ENLARGED TOILET PLAN
A301 1/2" = 1'-0"



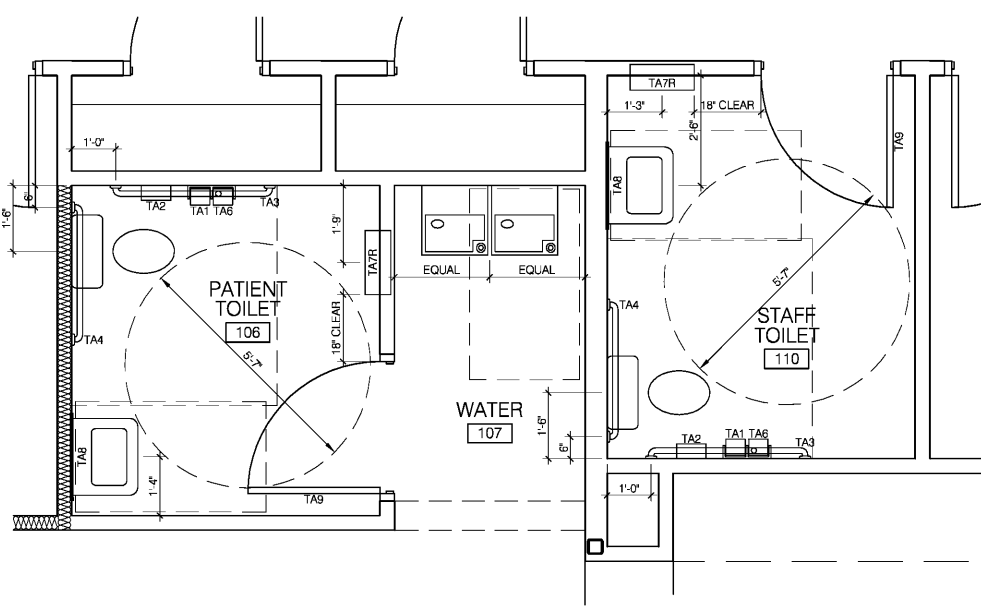
9 ENLARGED CHECK OUT PLAN
A301 1/4" = 1'-0"

TOILET ACCESSORIES

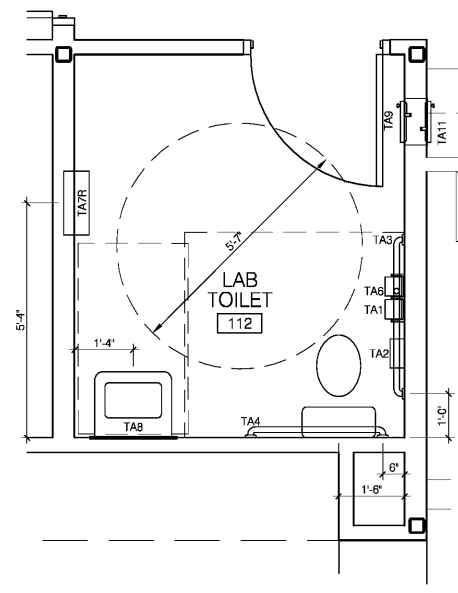
- TA1 DBL. ROLL TOILET TISSUE DISP.
- TA2 FEM. NAPKIN DISPOS.
- TA3 42" HORIZONTAL GRAB BAR
- TA4 36" HORIZONTAL GRAB BAR
- TA5 24" HORIZONTAL GRAB BAR
- TA6 18" VERTICAL GRAB BAR
- TA7 PAPER TOWEL DISPEN./DISPOSE
- TA7R REC. PAPER TOWEL DISP./DISP.
- TA8 18" W X 30" H SS FRAME MIRROR
- TA9 CLOSET HOOK
- TA10 MOP/BROOM HOLDER W/ SHELF
- TA11 SPECIMEN PASS-THRU CABINET



10 TYPICAL TOILET MOUNTING HEIGHTS
A301 1/2" = 1'-0"

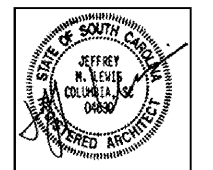
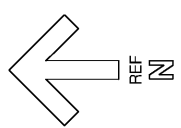


11 ENLARGED TOILET PLAN
A301 1/2" = 1'-0"



12 ENLARGED TOILET PLAN
A301 1/2" = 1'-0"

- NOTES:**
1. PROVIDE SUBSTANTIAL WOOD BLOCKING IN WALLS BEHIND ALL WALL MOUNTED ACCESSORIES OR ITEMS ATTACHED TO WALL IN ACCORDANCE WITH SUPPLIER & MANUFACTURER RECOMMENDATIONS.
 2. VERIFY ALL FIXTURE LOCATIONS W/ MANUFACTURER INSTALLATION RECOMMENDATIONS FOR ACCESSIBILITY. IMMEDIATELY NOTIFY ARCHITECT OF DISCREPANCIES FOR RESOLUTION.



REV.	DATE	DESCRIPTION

Order Plans @ WWW.JLDIline.com