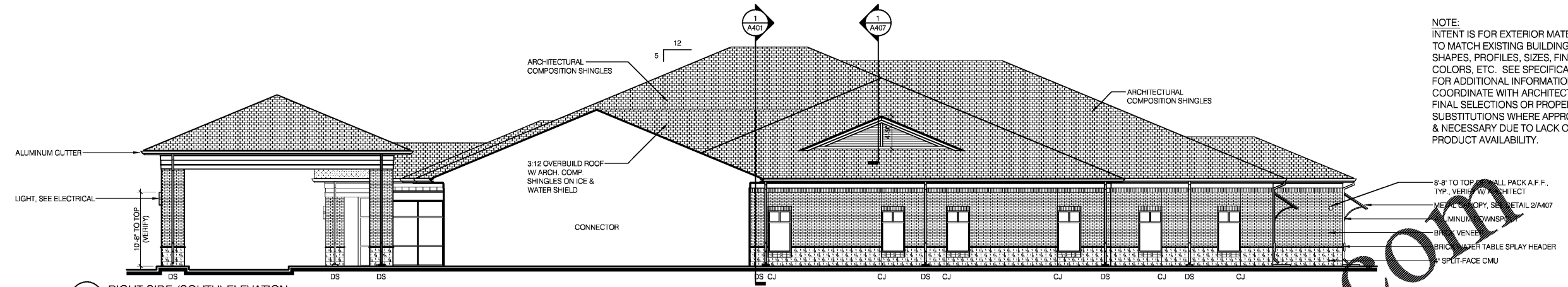


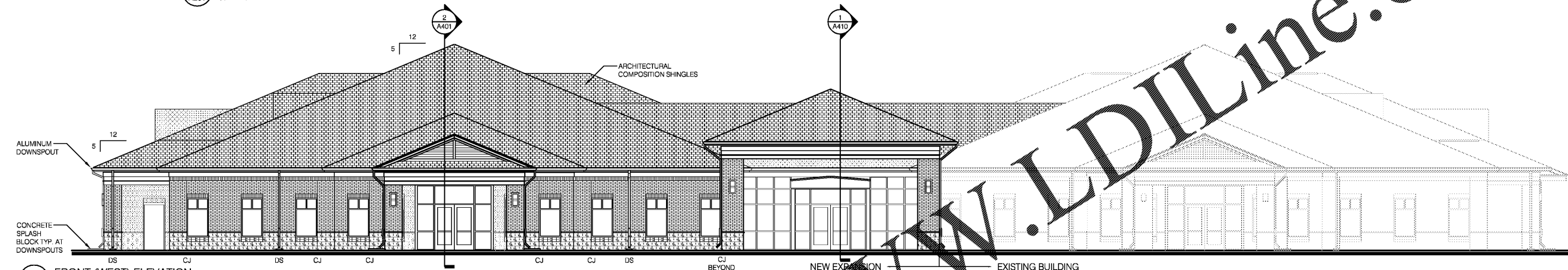
THIS DRAWING AND THE DESIGN SHOWN THEREON ARE THE PROPERTY OF JEFF LEWIS, AIA. THE REPRODUCTION, COPYING OR OTHER USE OF THIS DRAWING WITHOUT WRITTEN CONSENT OF JEFF LEWIS AIA IS PROHIBITED AND INFRINGEMENTS WILL BE SUBJECT TO LEGAL ACTION.



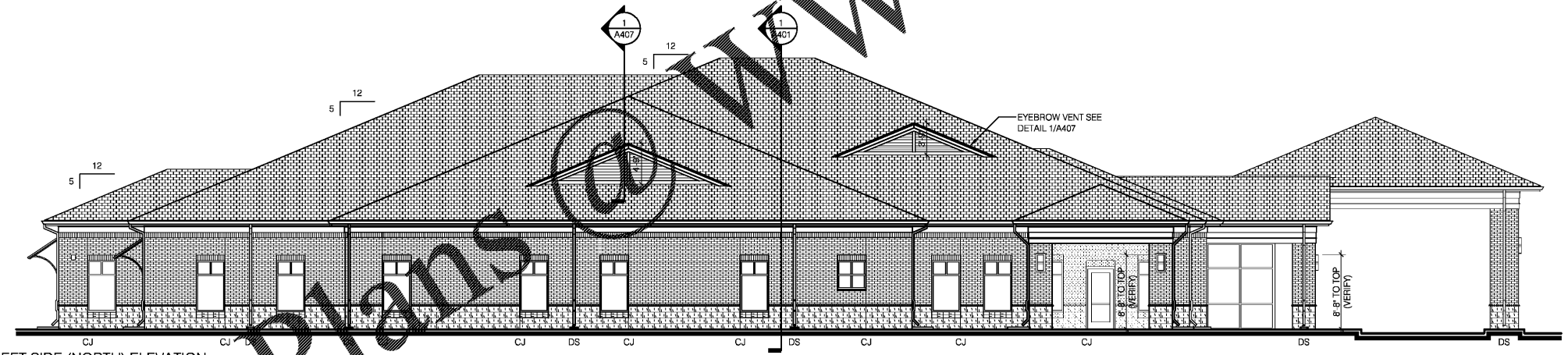
1 RIGHT SIDE (SOUTH) ELEVATION  
A201 1/8" = 1'-0"

NOTE:  
INTENT IS FOR EXTERIOR MATERIALS TO MATCH EXISTING BUILDING SHAPES, PROFILES, SIZES, FINISHES, COLORS, ETC. SEE SPECIFICATIONS FOR ADDITIONAL INFORMATION & COORDINATE WITH ARCHITECT FOR FINAL SELECTIONS OR PROPER SUBSTITUTIONS WHERE APPROVED & NECESSARY DUE TO LACK OF PRODUCT AVAILABILITY.

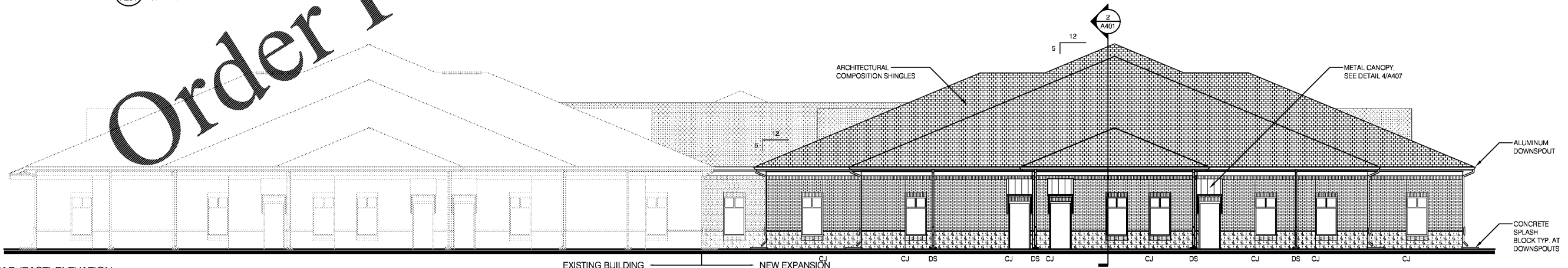
8'-8" TO TOP WALL PACK A.F.F. TYP. VERIFY W/ ARCHITECT  
METAL CANOPY, SEE DETAIL 2/A407  
MINIMUM DOWNSPOUT  
BRICK VENEER  
BRICK WATER TABLE SPLAY HEADER  
SPOT-FACE CMU



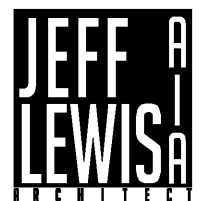
2 FRONT (WEST) ELEVATION  
A201 1/8" = 1'-0"



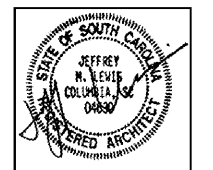
3 LEFT SIDE (NORTH) ELEVATION  
A201 1/8" = 1'-0"



4 REAR (EAST) ELEVATION  
A201 1/8" = 1'-0"



581 JACOBS MILL POND ROAD  
ELGIN, SOUTH CAROLINA 29045  
803.960.5026 / jeff@jefflewis.com



LUGOFF FACILITY EXPANSION  
SANDHILLS MEDICAL FOUNDATION  
28 BALDWIN AVENUE  
LUGOFF, SOUTH CAROLINA 29078

REV.	DATE	DESCRIPTION

JOB # 16-039-1 07.15.2019

A201