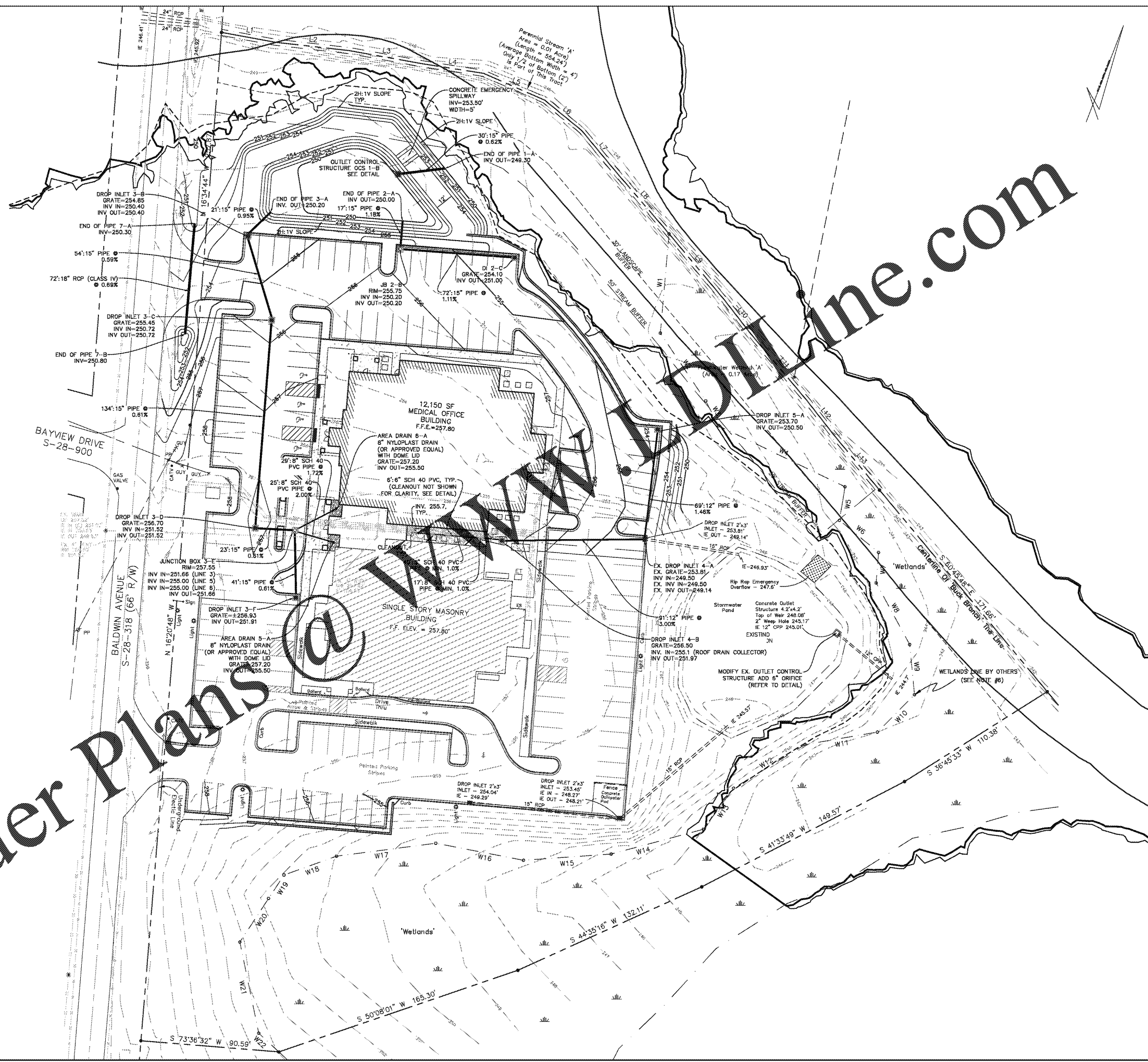
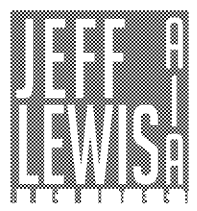
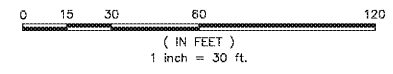


THIS DRAWING AND THE DESIGN SHOWN THEREON ARE THE PROPERTY OF JEFF LEWIS, AIA. THE REPRODUCTION, COPYING OR OTHER USE OF THIS DRAWING WITHOUT WRITTEN CONSENT OF JEFF LEWIS AIA IS PROHIBITED AND INFRINGEMENTS WILL BE SUBJECT TO LEGAL ACTION.

- NOTE:
1. EXACT DEPTH OF EXISTING UTILITIES UNKNOWN. CONTRACTOR SHALL ADJUST STORM DRAINAGE INVERTS AS NECESSARY TO AVOID EXISTING UTILITIES AT NO ADDITIONAL COST TO THE OWNER. CONTRACTOR TO FIELD LOCATE LINES (HORIZONTALLY AND VERTICALLY) PRIOR TO INSTALLATION OF STORM DRAINAGE LINES. CONTRACTOR TO NOTIFY ENGINEER OF ANY CONFLICTS SO THAT FIELD ADJUSTMENTS CAN BE MADE PRIOR TO INSTALLATION.
  2. CONTRACTOR TO ENSURE POSITIVE DRAINAGE FLOW IN SPOOT DITCH.
  3. "PIPE" MAY BE EITHER REINFORCED CLASS III CONCRETE OR DOUBLE WALL HDPE PIPE. HDPE PIPE MUST HAVE A MINIMUM OF 2" OF COVER ON TOP OF PIPE.
  4. IT IS THE INTENT FOR ROOF DRAINS CONNECTING TO DI 4-B TO BE ABOVE EXISTING WATER LINES.
  5. TOP OF MECHANICAL UNIT PADS TO BE LEVEL AND BOTTOM TO MATCH PROPOSED GRADES.
  6. CONTRACTOR TO PROVIDE AS-BUILT SURVEY OF DETENTION POND AND STORM DRAINAGE SYSTEM BY A LICENSED SURVEYOR IN AUTOCAD FORMAT. SURVEY TO BE IN SAME COORDINATE SYSTEM AS ORIGINAL SURVEY.

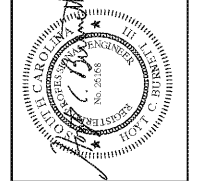


Order Plans @ [www.drline.com](http://www.drline.com)



561 JACOBS MILL POND ROAD  
 ELGIN, SOUTH CAROLINA 29045  
 802.960.5025 / jeff@jefflewis.com

THE LANDPLAN GROUP SOUTH  
 A DIVISION OF THE LANDPLAN GROUP, INC.  
 1000 W. BROADWAY, SUITE 1000  
 CHARLOTTE, NC 28202  
 704.375.8800



LUGOFF FACILITY EXPANSION  
 SANDHILLS MEDICAL FOUNDATION

28 BALDWIN AVENUE  
 LUGOFF, SOUTH CAROLINA 29078

REV.	DATE	DESCRIPTION
1.	11.22.19	Revised based on changes to FEMA flood maps.
2.	8.11.20	Big Set

JOB # 16-039-1 07.15.2019  
 TLPGS NO. 803-A

**DRAINAGE PLAN**

**C5.1**