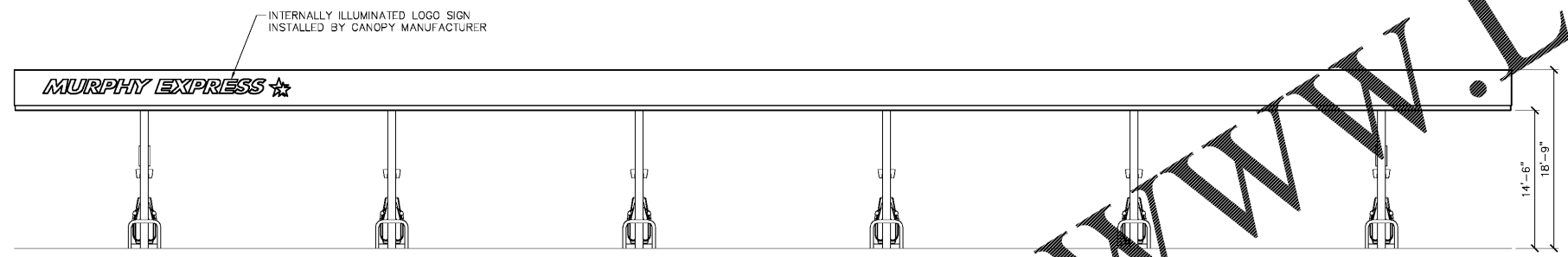


CANOPY FIELD WIRING (BY G.C.):

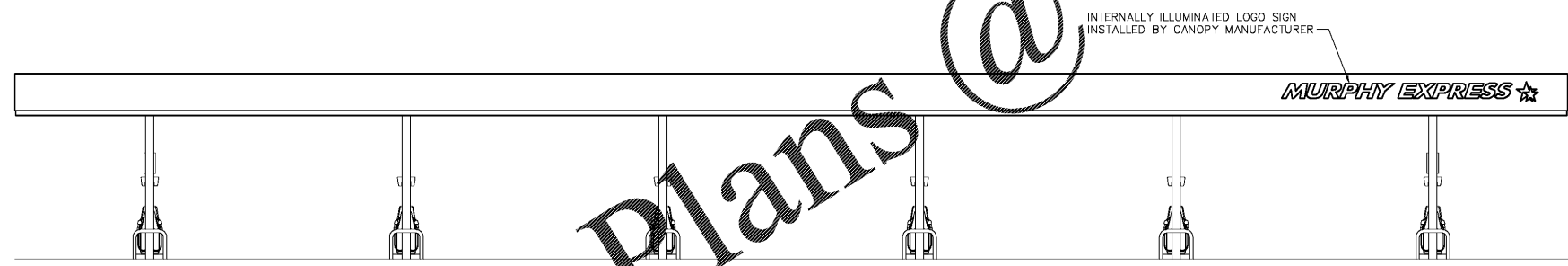
1. THE CANOPY IS INSTALLED COMPLETE WITH TWO (2) ONE-INCH CONDUITS IN EACH OF TWO COLUMNS FOR LOGO SIGN/LIGHTING POWER FROM THE BUILDING.
2. SET A JUNCTION BOX AT EACH DROP FOR CANOPY LIGHTS. THE JUNCTION BOXES ARE JOINED TO ONE ANOTHER WITH CONDUIT WHICH IN TURN IS CONNECTED TO THE TWO CANOPY COLUMN CONDUITS. THE LIGHTS ARE WIRED INDIVIDUALLY TO THE RESPECTIVE JUNCTION BOXES.
3. LOGO/PRICE SIGNS ARE ALSO WIRED TO JUNCTION BOXES WITH CONDUIT RUNS BACK TO THE CANOPY COLUMNS.
4. THE CANOPY IS INSTALLED COMPLETE WITH TWO (2) ONE-INCH CONDUITS IN EACH COLUMN FOR THE ENTERTAINMENT SYSTEM.
5. THE CANOPY IS INSTALLED COMPLETE WITH TWO (2) ONE-INCH CONDUITS IN EACH COLUMN FOR THE SECURITY SYSTEM.

REFER TO BUILDING ELECTRICAL PLANS FOR CANOPY SIGN AND LIGHTING CIRCUITS. CIRCUIT IDENTIFICATION INTENTIONALLY NOT SHOWN ON THIS SHEET.

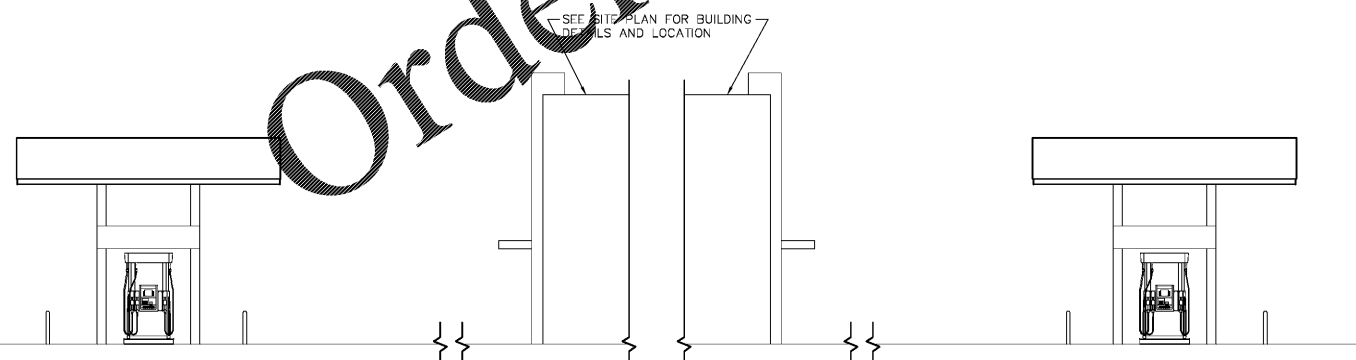
1 CANOPY WIRING PLAN
SCALE: 1/8"=1'-0"



2 CANOPY FRONT ELEVATION
SCALE: 1/8"=1'-0"



3 CANOPY BACK ELEVATION
SCALE: 1/8"=1'-0"



4 CANOPY SIDE ELEVATION
SCALE: 1/8"=1'-0"

5 CANOPY SIDE ELEVATION
SCALE: 1/8"=1'-0"

- LEGEND:**
- ⊘ = PART NUMBER; SEE SHEET F-1
 - ⊞ = KEYNOTE; SEE SHEET F-1
 - ⊞ = CONDUIT; SEE SHEET FE-1
 - ⊞-# = DETAIL CALLOUT
 - ⊞-# = ELEVATION CALLOUT
 - ⊞-# = SECTION CALLOUT
 - = DOWN LIGHT
 - ⊞ = WIRING BOX

- GENERAL NOTES:**
1. ALL WIRING FOR LIGHTING BY G.C. CONDUITS FROM JUNCTIONS TO CANOPY COLUMNS BY G.C.
 2. ALL WIRING CONDUIT TO BE 3/4" UNLESS OTHERWISE NOTED.
 3. ALL LIGHTING FIXTURES PROVIDED BY OWNER AND MOUNTED BY CANOPY ERECTORS.
 4. SEE DRAWING FE-3 (CANOPY WIRING LAYOUT) FOR ELECTRICAL CALLOUTS OF LIGHTS.
 5. LOCATION AND QUANTITY OF SIGNS TO BE FIELD DETERMINED ON A SITE BY SITE BASIS.
 6. G.C. TO PROVIDE ALL WIRING TO SIGNS.
 7. WIRE SIGNS IN ACCORDANCE TO MANUFACTURER'S REQUIREMENTS. PROVIDE LOCK-OUT OR DISCONNECT FOR EACH SIGN USE WHILE SERVICING.
 8. EACH OF THE PRICE SIGN CIRCUITS REQUIRES A SEPARATE NEUTRAL CONDUCTOR.
 9. ALL LIGHTS AND SIGNAGE TO BE CIRCUITED THROUGH THE MMB BOX.
 10. ALL FIELD WORK IS DONE BY THE G.C.

FE-3
2824 IN-LINE
6 MPD
WAYNE
OCTOBER 2019
STANDARDS

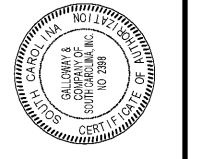


CANOPY WIRING LAYOUT

DATE: JUNE, 2020
SCALE: AS NOTED
FILE NAME: 16-Mac800751_FE-3
NO. REVISION

NWC OAK DRIVE & HIGHWAY 1
LEXINGTON SOUTH CAROLINA

Galloway
6162 S. Wilcox Drive, Suite 320
Clemens, SC 29631
303.770.9884
GallowayUS.com



COPYRIGHT
THESE PLANS ARE AN INSTRUMENT OF SERVICE AND ARE THE PROPERTY OF GALLOWAY, AND MAY NOT BE DUPLICATED, DISCLOSED, OR REPRODUCED WITHOUT THE WRITTEN CONSENT OF GALLOWAY. COPYRIGHTS AND INFRINGEMENTS WILL BE ENFORCED AND PROSECUTED.

MURPHY EXPRESS
MURPHY OIL U.S.A. INC.
200 EAST PEACH STREET
EL DORADO, ARKANSAS 71730

H:\Murphy Oil Tank & Piping\SC - Lexington EXP (8803) (Rev 1) - Mac800751\Fuel\16-Mac800751_FE-3.dwg - Eric Farnham - 6/4/2020 1:45 AM

Order Plans @ www.LDILine.com