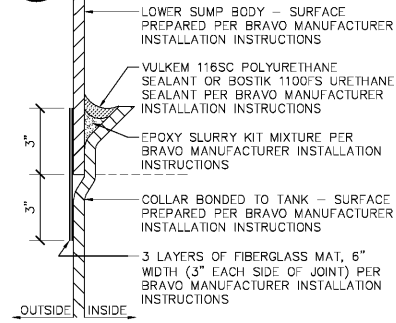
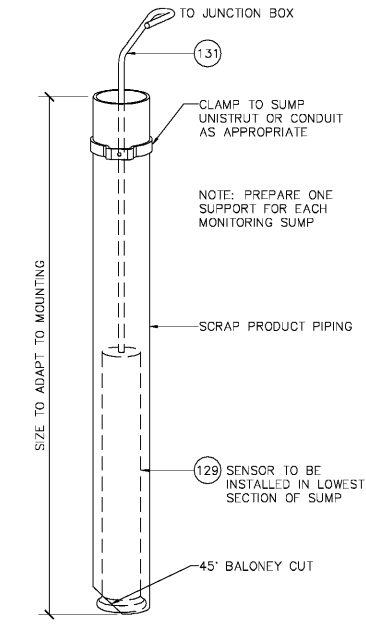


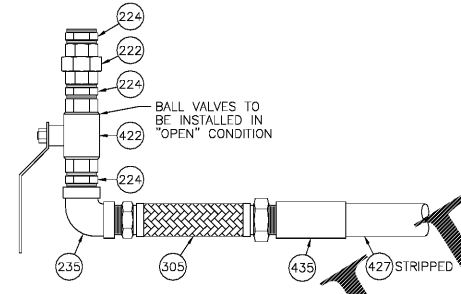
7A STP SUMP – TOP CHANNEL JOINT DETAIL
SCALE: 3"=1'-0"



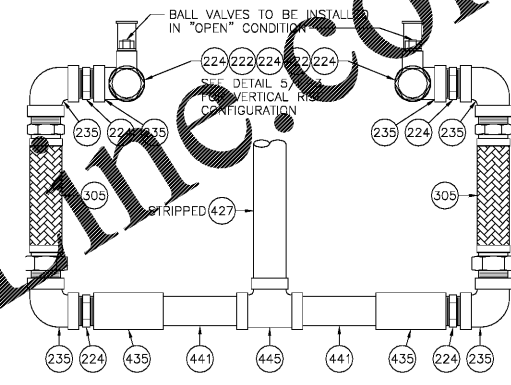
7B STP SUMP – BOTTOM JOINT DETAIL
SCALE: 3"=1'-0"



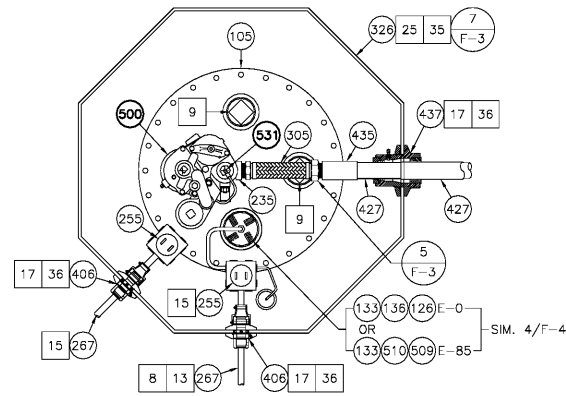
6 SUMP SENSOR SUPPORT
NOT TO SCALE



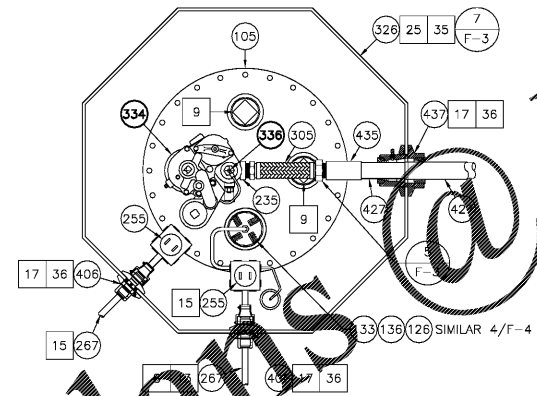
5 STAINLESS STEEL PIPING ASSEMBLY
NOT TO SCALE



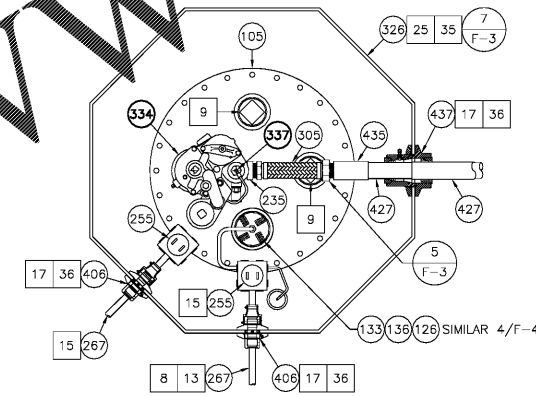
4 REGULAR PIPING MANIFOLD – PLAN
NOT TO SCALE



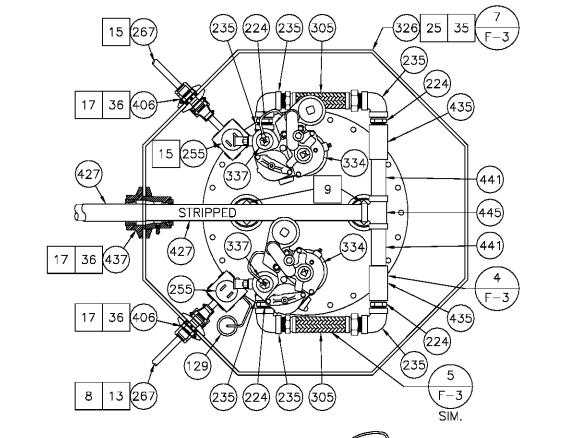
8 E-85 OR E-0 CONTAINMENT SUMP
NOT TO SCALE



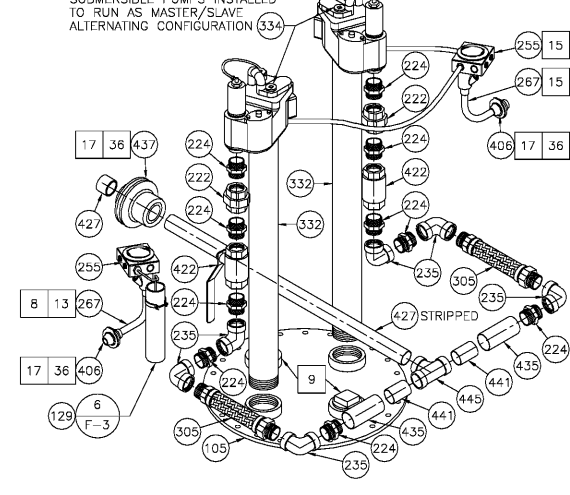
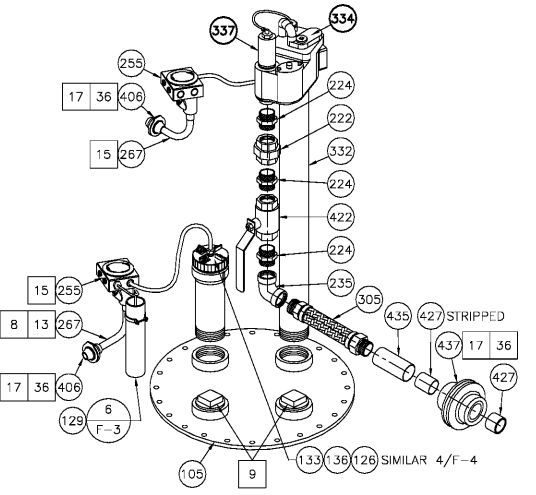
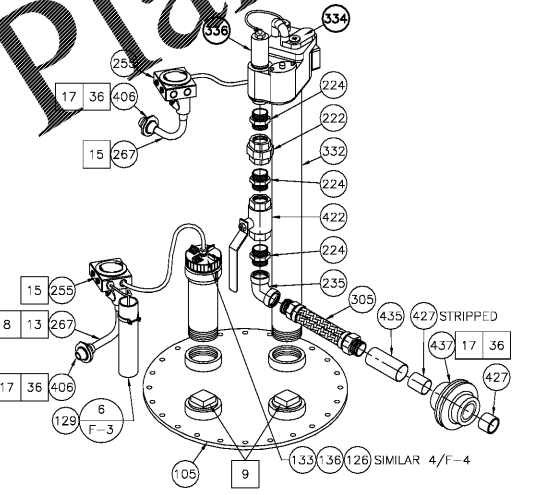
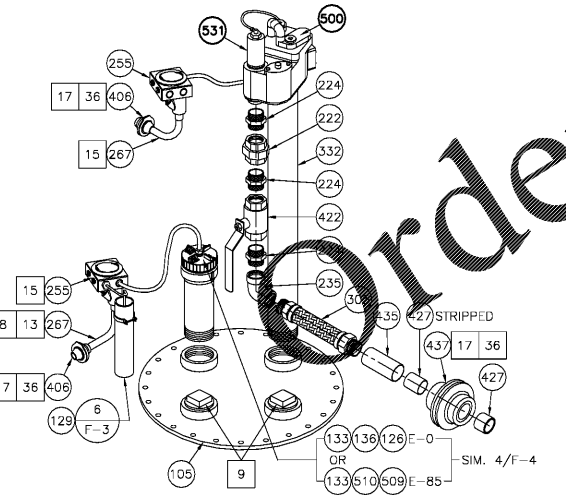
3 DIESEL CONTAINMENT SUMP
NOT TO SCALE



2 PREMIUM CONTAINMENT SUMP
NOT TO SCALE



1 REGULAR CONTAINMENT SUMP W/MANIFOLD
NOT TO SCALE



- LEGEND:**
- ⊘ = PART NUMBER; SEE SHEET F-1
 - # = KEYNOTE; SEE SHEET F-1
 - ⊘ = CONDUIT; SEE SHEET FE-1
 - ⊘-# = DETAIL CALLOUT
 - ⊘-# = ELEVATION CALLOUT
 - ⊘-# = SECTION CALLOUT

F-3
WAYNE
OCTOBER 2019
STANDARDS



TANK SUMP DETAILS

DATE: JUNE, 2020
SCALE: AS NOTED
FILE NAME: 07-McG000/01-F-3
DATE: _____
NO. / REVISION: _____

NWC OAK DRIVE & HIGHWAY 1
LEXINGTON SOUTH CAROLINA

Galloway

6102 S. Willow Drive, Suite 320
Lexington, SC 29059
303.770.9884
GallowayUS.com

PROFESSIONAL ENGINEER
STATE OF NORTH CAROLINA
NO. 2388
CERT. EXPIRES 12/31/2024

COPYRIGHT
THESE PLANS ARE AN INSTRUMENT OF SERVICE AND ARE THE PROPERTY OF GALLOWAY, AND MAY NOT BE DUPLICATED, DISCLOSED, OR REPRODUCED WITHOUT THE WRITTEN CONSENT OF GALLOWAY. COPYRIGHTS AND INFRINGEMENTS WILL BE ENFORCED AND PROSECUTED.

MURPHY EXPRESS

MURPHY OIL U.S.A. INC.
200 EAST PEACH STREET
EL DORADO, ARKANSAS 71730

H:\Murphy Oil Tank & Piping\SC Lexington EXP (8803) (Rev 1) - Mod60751\Final\07-McG000\F-3.dwg - Eric Farnham - 04/20/20 1:40 AM

1/16 inch