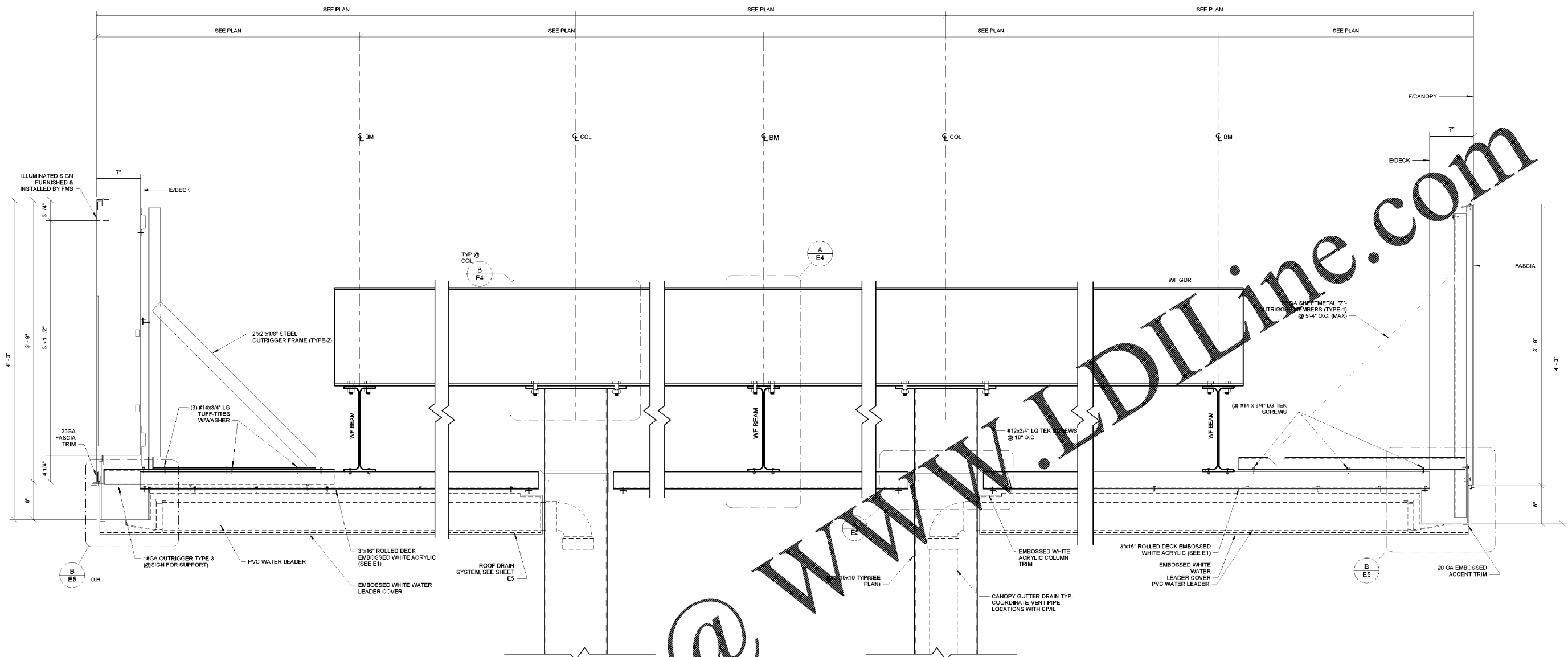


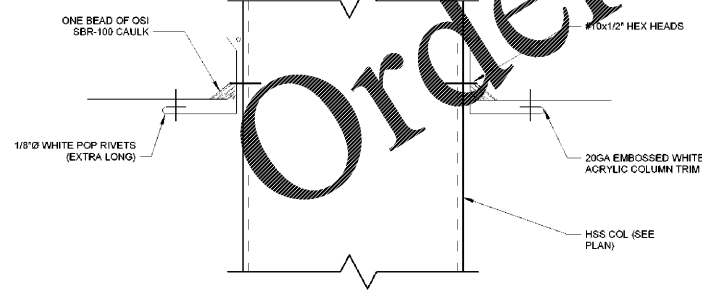
**COPYRIGHT NOTICE**  
This drawing is the property of the above referenced Professional and is not to be used for any purpose other than the specific project and site named herein, and cannot be reproduced in any manner without the express written permission from the Professional.

**ISSUE RECORD**

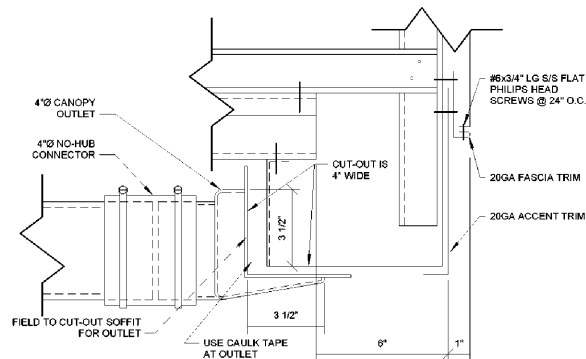
DATE	REV.	DESCRIPTION
05/20/2020		PERMIT SUBMISSION SET
08/07/2020	2	OUT TO BID SET



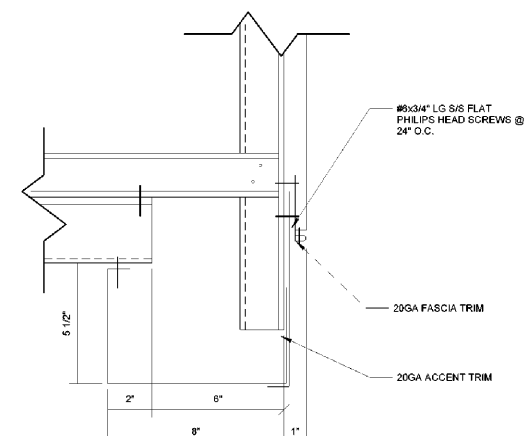
**SECTION 2-5**  
E5  
1 1/2" = 1'-0"  
NOTE: NOT TO SCALE IN HORIZONTAL DIRECTION



**SECTION A-5**  
E5  
3" = 1'-0"

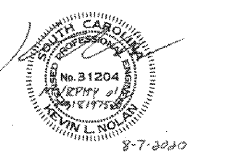


**SECTION B-5**  
E5  
3" = 1'-0"



**SECTION C-5**  
E5  
3" = 1'-0"

**PROFESSIONAL SEAL**



**PROFESSIONAL IN CHARGE**

K NOLAN

**PROJECT MANAGER**

M YOUNG

**QUALITY CONTROL**

B McGLADE

**DRAWN BY**

D MAHONEY

**PROJECT NAME**

**MURPHY EXPRESS**

**MURPHY OIL FUEL FACILITY CANOPY**

NW CORNER HWY 1 & OAK DRIVE, LEXINGTON SOUTH CAROLINA 29073

**FREY MOSS STRUCTURE**

1801 Rockdale Industrial Blvd.  
Conyers, Georgia 30012  
Voice: (800) 368-6385  
Fax: (770) 408-6037

FMS JOB NUMBER  
C20AM00062

FMS MODEL NUMBER  
XXXXXX

**PROJECT NUMBER**  
20181975.5

**SHEET TITLE**

**SECTION**

**SHEET NUMBER**

**E5**



**BAKER, INGRAM, & ASSOCIATES STRUCTURAL ENGINEERS**

TWO WHITE HORSE PIKE HADDON HEIGHTS, NJ 08055  
(856) 310-1491 fax: (856) 310-1829