

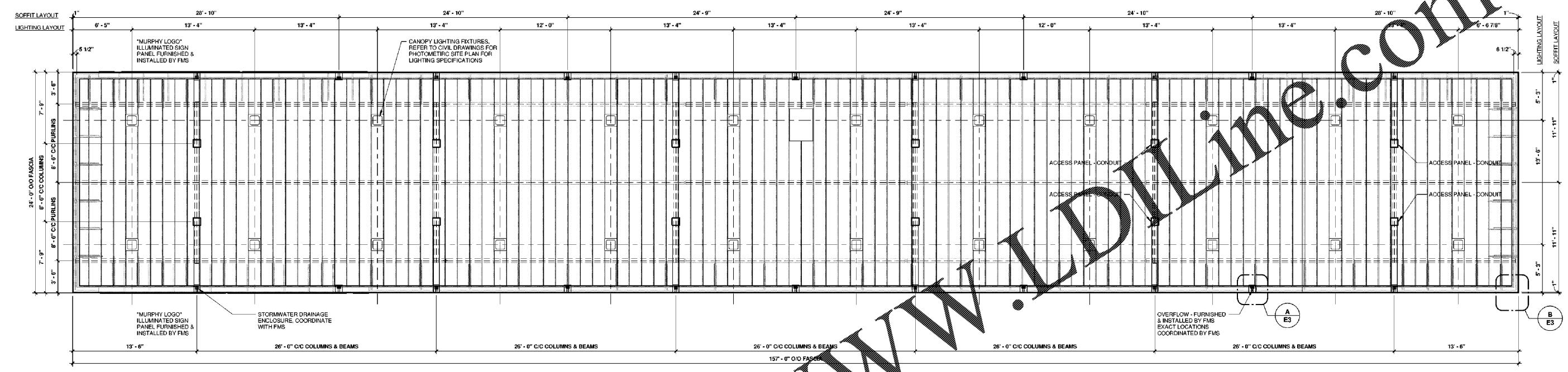
- CANOPY NOTES**
1. DECK LIGHTS TO BE INSTALLED IN THE CENTER OF DECK PANS
 2. DECK LIGHTS FINISHED BY CUSTOMER AND INSTALLED BY FMS
 3. WIRING BY SITE ELECTRICAL CONTRACTOR IN THE FIELD
 4. SEE APPROVED PHOTOMETRICS PROVIDED BY OTHERS
 5. OVERFLOWS AND GUTTER SEAM LOCATIONS TO BE COORDINATED BY FMS
 6. ALL CANOPY COLUMNS TO RECEIVE 4" ROOF DRAIN LEADERS

GreenbergFarrow
 21 South Evergreen Avenue
 Suite 200
 Arlington Heights, Illinois 60005
 t: 847.788.9200

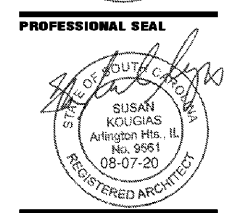
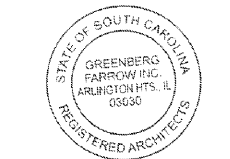
COPYRIGHT NOTICE
 This drawing is the property of the above referenced Professional and is not to be used for any purpose other than the specific project and site named herein, and cannot be reproduced in any manner without the express written permission from the Professional.

ISSUE RECORD

DATE	REV.	DESCRIPTION
05/20/2020		PERMIT SUBMISSION SET
08/07/2020	2	OUT TO BID SET



1 LIGHTING & SOFFIT LAYOUT
 3/16" = 1'-0"



PROFESSIONAL IN CHARGE
 SUSAN NELSON KOUSSIAS

PROJECT MANAGER
 JOHN WASHED

QUALITY CONTROL
 CHRIS CERBO

DRAWN BY
 C/SS

PROJECT NAME
MURPHY EXPRESS
MURPHY OIL FUEL FACILITY CANOPY
 NW CORNER HWY 1 & OAK DRIVE, LEXINGTON SOUTH CAROLINA 29073



1801 Rockdale Industrial Blvd.
 Conyers, Georgia 30012
 Voice: (800) 368-6385
 Fax: (770) 409-6037

FMS JOB NUMBER: C201819755
 FMS MODEL NUMBER: XXXXXX

PROJECT NUMBER
20181975.5

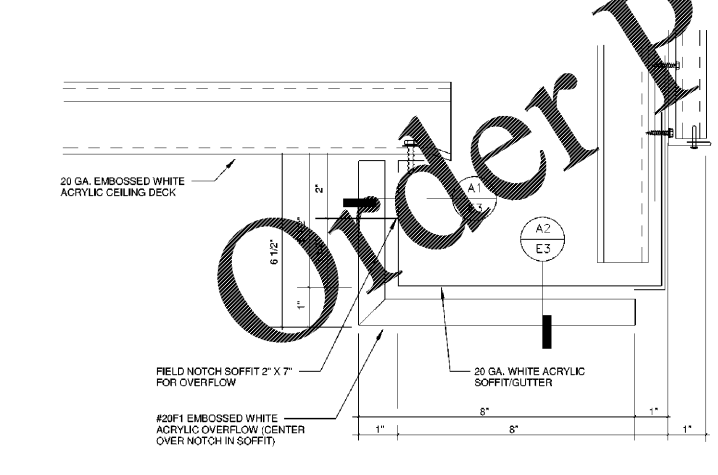
SHEET TITLE

LIGHTING & SOFFIT PLAN

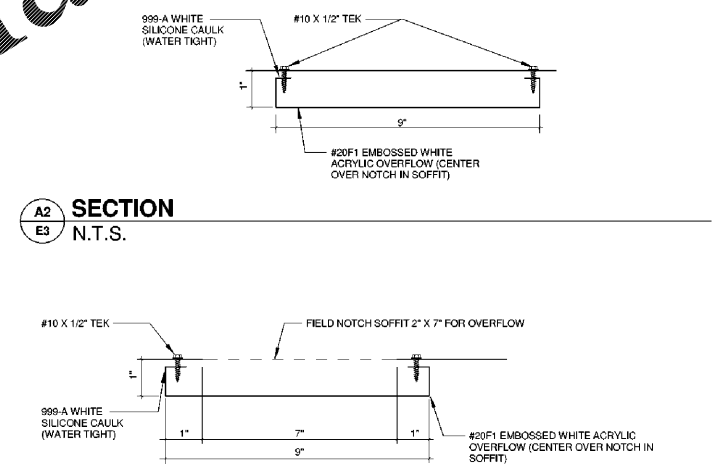
SHEET NUMBER

E3

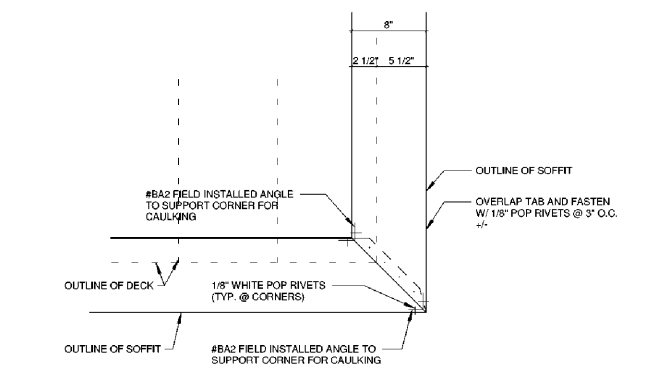
Order Plans @ www.JDLine.com



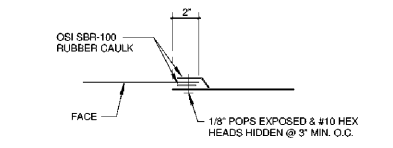
A 'A' OVERFLOW DETAIL
 N.T.S.



A2 SECTION
 N.T.S.



B CORNER DETAIL
 N.T.S.



C TYP. SOFFIT LAPS
 N.T.S.