

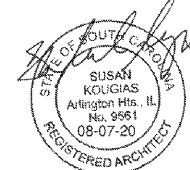
COPYRIGHT NOTICE
This drawing is the property of the above referenced Professional and is not to be used for any purpose other than the specific project and site named herein, and cannot be reproduced in any manner without the express written permission from the Professional.

ISSUE RECORD

| DATE | REV. | DESCRIPTION |
|------------|------|-----------------------|
| 05/20/2020 | | PERMIT SUBMISSION SET |
| 08/07/2020 | 2 | OUT TO BID SET |



PROFESSIONAL SEAL



PROFESSIONAL IN CHARGE
SUSAN NELSON KOUGIAS

PROJECT MANAGER
JOHN NASHED

QUALITY CONTROL
CHRIS CERBO

DRAWN BY
CA/SS

PROJECT NAME

MURPHY EXPRESS

MURPHY OIL FUEL FACILITY CANOPY

NW CORNER HWY 1 & OAK DRIVE, LEXINGTON SOUTH CAROLINA 29073



1801 Rockdale Industrial Blvd.
Conyers, Georgia 30012
Voice: (800) 365-6385
Fax: (770) 409-6037

FMS JOB NUMBER
C20181975.5
FMS MODEL NUMBER
XXXXXX

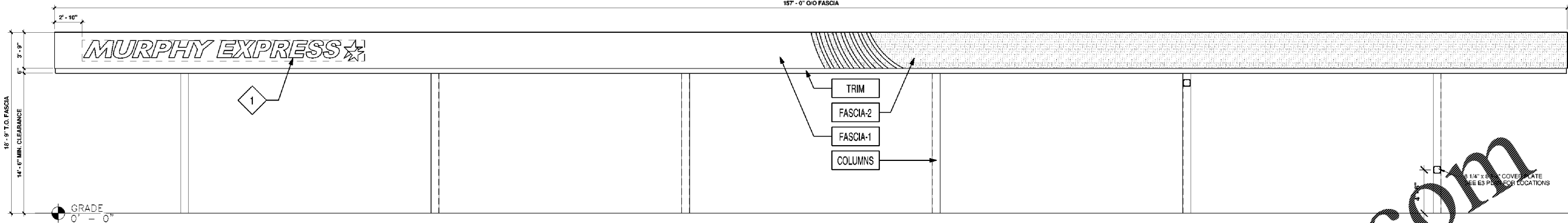
PROJECT NUMBER
20181975.5

SHEET TITLE

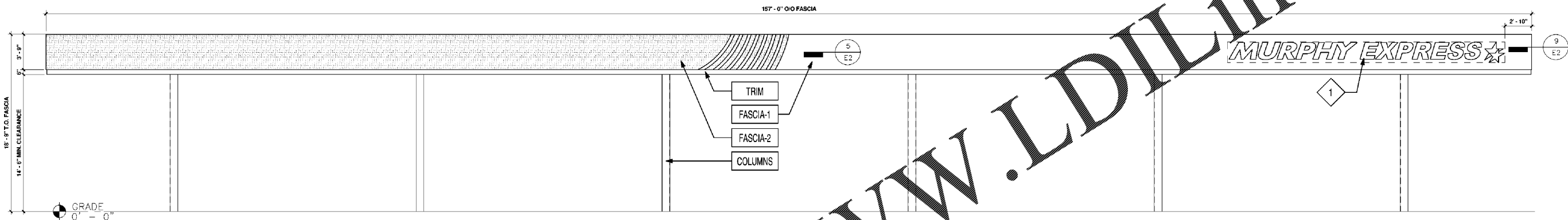
ELEVATIONS

SHEET NUMBER

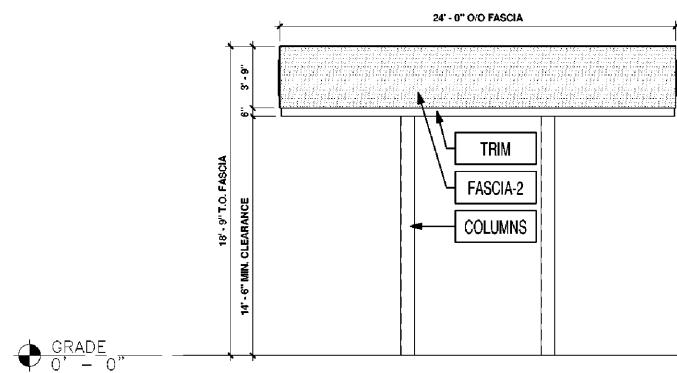
E2



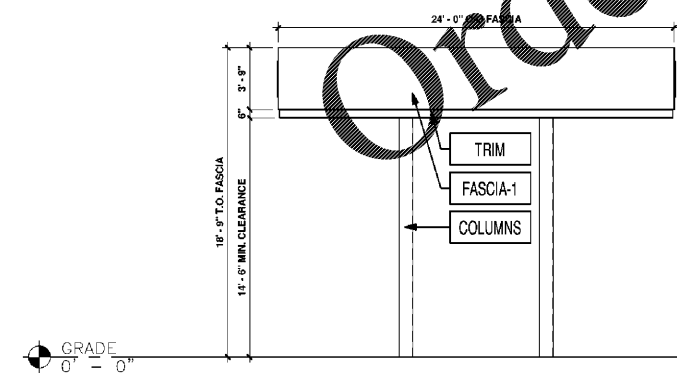
1 FRONT ELEVATION (SOUTH WEST)
3/16" = 1'-0"



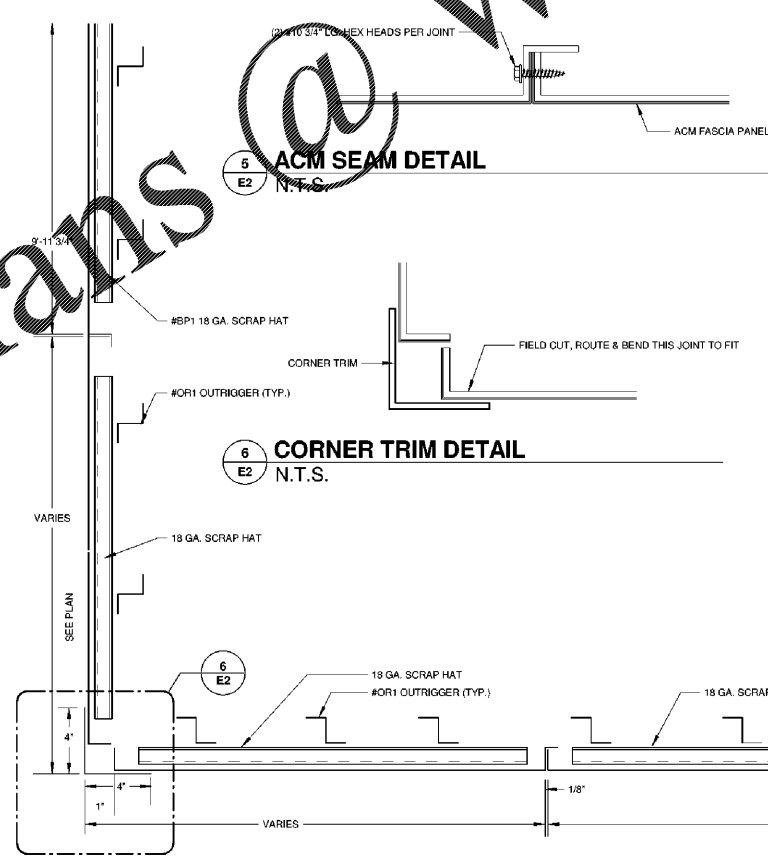
2 REAR ELEVATION (NORTH EAST)
3/16" = 1'-0"



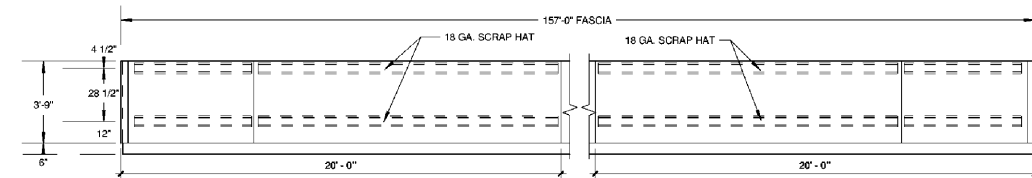
3 RIGHT ELEVATION (SOUTH EAST)
3/16" = 1'-0"



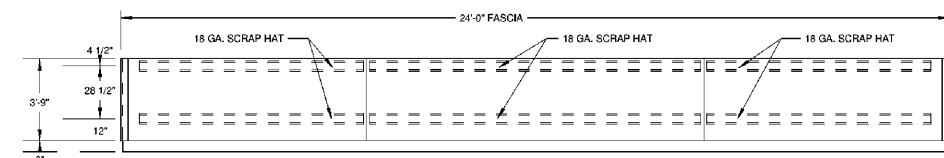
4 LEFT ELEVATION (NORTH WEST)
3/16" = 1'-0"



9 SECTION 'E' - CORNER FASCIA DETAIL (TYP.)
1/4" = 1'-0"



7 SIGN SUPPORT DETAIL - ELEVATIONS 1 & 2
N.T.S.



8 SIGN SUPPORT DETAIL - ELEVATIONS 3 & 4
N.T.S.

KEYED NOTES

- 1 MURPHY LOGO SIGN FURNISHED BY FMS INSTALLED BY FMS. SIGNAGE - 61.0 X 2 - 128.0 SQ. FT.

FINISH SCHEDULE

| ITEM | DESCRIPTION | FINISH | NOTES |
|----------|-----------------------------------|---|--|
| FASCIA-1 | ACM (ALUMINUM COMPOSITE MATERIAL) | ACM FASCIA "BRUSHED ALUMINUM" | FURNISHED & INSTALLED BY FMS |
| FASCIA-2 | ACM (ALUMINUM COMPOSITE MATERIAL) | ACM FASCIA "PROGRAM RED" BY ALPOLIC | FURNISHED & INSTALLED BY FMS |
| TRIM | 20 GA. SHEET METAL | 6" HT. PRE-FINISHED METAL ACCENT BAND "PURE WHITE" SW #7005 | FURNISHED & INSTALLED BY FMS |
| COLUMNS | SEE STRUCTURAL DRAWINGS | PAINTED "DORMER BROWN" SW #7521 | FURNISHED & INSTALLED BY FMS PAINTED BY SITE CONTRACTOR IN FIELD |
| | | (1) SHOP COAT OF RUST INHIBITIVE PRIMER | (1) SHOP COAT OF RUST INHIBITIVE PRIMER FURNISHED AND APPLIED BY FMS |