

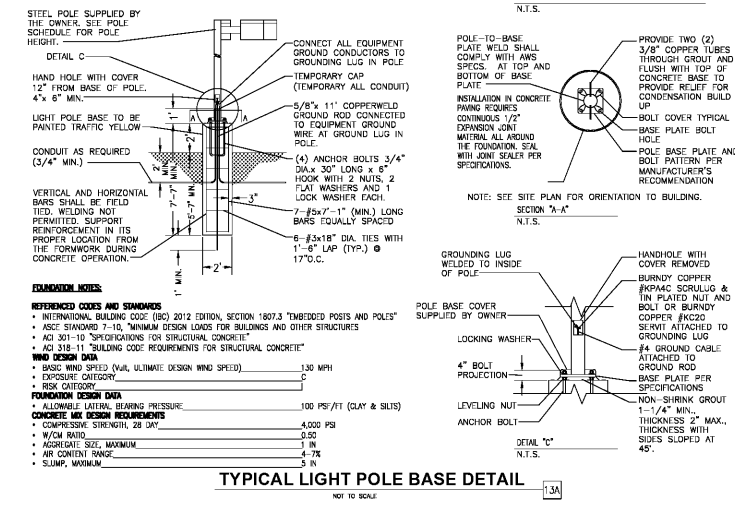
1 PHOTOMETRIC SITE PLAN  
SCALE: 1"=20'-0"

SYMBOL	QTY	ASSEMBLY HEIGHT	POLE HEIGHT	LUMENS	WATT	MODEL	DESCRIPTION
S	1	26'-0"	24'-0"	18000	14	SLM-SIL-FT-UNV-50-70-BRZ	LSI LIGHTING, SLICE MEDIUM LED SERIES AREA LIGHT, 18,000 LUMENS PACKAGE, 5000K, 70 CRI, SINGLE HEAD FLAT LENS FIXTURE, FORWARD THROW
D180	2	26'-0"	24'-0"	18000	298	SLM-18L-SIL-FT-UNV-50-70-BRZ	LSI LIGHTING, SLICE MEDIUM LED SERIES AREA LIGHT, 18,000 LUMENS PACKAGE, 5000K, 70 CRI, DOUBLE HEAD FLAT LENS FIXTURE, FORWARD THROW
CANOPY	24	N/A	N/A	1000	72	CRUS-SC-LED-HO-50-UE-WHT	LSI LIGHTING, LEGACY SERIES, FLAT LENS CANOPY FIXTURE
H	3	8'-3"	N/A	4000	42	XSPWA03MCS-UZP	CREE LIGHTING, XSP WALL MOUNT LUMINAIRE, 5700K CCT, WITH PHOTOCELL SENSOR
M	2	8'-3"	N/A	1800	20	LR6-18L-35K-120V-A-DR WLT6A	CREE LIGHTING, LR-6 DOWN LIGHT LUMINAIRE, 3500K CCT, 1800 LUMENS FULLY RECESSED ENTRY LIGHTS WITH HOUSING RC6-12W-GU24

NOTES: ALL AREA SITE LIGHT FIXTURES AND POLES TO BE MOUNTED ON CONCRETE BASE PER DETAIL. THIS SHEET ALL ANCHOR BOLTS TO BE ORIENTED IN THE SAME DIRECTION (SQUARE) AT INSTALLATION PER MANUFACTURER'S SPECIFICATIONS. ALL FIXTURES ARE FULL CUT-OFF FIXTURES.

SYMBOL	QTY	POLE HEIGHT	MODEL NUMBER	DESCRIPTION
S	1	24'-0"	55QB3-S11G-24-S-BRZ-5BC	LSI LIGHTING, STEEL SQUARE POLE, BOLT-ON ARM MOUNT, BRONZE
D180	2	24'-0"	55QB3-S11G-24-D180-BRZ-5BC	LSI LIGHTING, STEEL SQUARE POLE, BOLT-ON ARM MOUNT, BRONZE

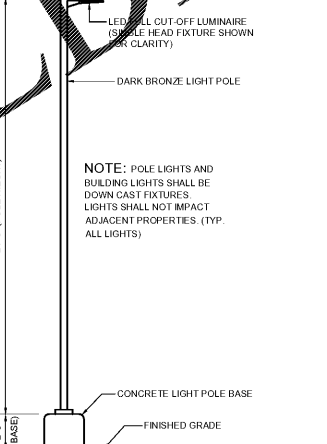
NOTES: ALL AREA SITE LIGHT FIXTURES AND POLES TO BE MOUNTED ON CONCRETE BASE PER DETAIL. THIS SHEET POLES RATED TO 130 MPH WIND VELOCITY.



TYPICAL LIGHT POLE BASE DETAIL  
NOT TO SCALE

**NOTES:**  
 PLAN WAS BASED ON THE INFORMATION PROVIDED. ALL DIMENSIONS, LUMINAIRE LOCATIONS SHOWN REPRESENT RECOMMENDED POSITIONS. THE ENGINEER AND/OR ARCHITECT MUST DETERMINE APPLICABILITY OF THE LAYOUT TO EXISTING OR FUTURE FIELD CONDITIONS.  
 THE STUDY IS BASED ON REQUESTED ILLUMINATION LEVELS, LUMINAIRE LOCATIONS, OR ADDITIONAL CRITERIA BY THE AUTHORITIES HAVING JURISDICTION.  
 THE CALCULATED PHOTOMETRIC LEVELS MAY OR MAY NOT MEET CERTAIN SAFETY STANDARDS OR RECOMMENDED PRACTICES OF IESNA.  
 THE PHOTOMETRIC PLAN REPRESENTS ILLUMINATION LEVELS CALCULATED FROM LABORATORY DATA TAKEN UNDER CONTROLLED CONDITIONS UTILIZING CURRENT INDUSTRY STANDARD LAMP RATINGS IN ACCORDANCE WITH ILLUMINATING ENGINEERING SOCIETY (IES) APPROVED METHODS. LABORATORY TESTS ARE MADE UNDER OPTIMUM CONDITION, WITH LAMP OUTPUT AT RATED VALUE, AND IN ACCORDANCE WITH ILLUMINATING ENGINEERING SOCIETY APPROVED METHODS.  
 ACTUAL ILLUMINATION LEVELS MAY DIFFER DUE TO VARIABLE FIELD CONDITIONS SUCH AS (BUT NOT LIMITED TO): VARIANCE IN LAMP LUMEN OUTPUT; LAMP TILT FACTOR; BALLAST WATTAGE OUTPUT; LINE VOLTAGE AT BALLAST; REFLECTOR SPECULARITY; LAMP LUMEN DEPRECIATION; AND LUMINAIRE DIRT DEPRECIATION.  
 THE 14'-6" MOUNTING HEIGHT IS THE ACTUAL ASSEMBLY (POLE, BASE, AND FIXTURE) AND MAY DIFFER FROM THE FROM THE LUMINAIRE'S LUMINOUS APERTURE.  
 THIS PLAN IS FOR RELATIVE LAYOUT AND SCOPE OF WORK PURPOSES ONLY. REFER TO SITE PLAN PREPARED BY LOCAL CONSULTANT FOR RELATIONSHIP OF THESE LUMINAIRES AND THEIR LOCATIONS TO EXISTING STRUCTURES AND REFERENCE.  
 SITE LIGHTING DESIGN USES FIXTURES THAT MAY APPEAR VISUALLY IDENTICAL BUT EMPLOY DIFFERENT OPTICS THAT PRODUCE THE LIGHT IN DIFFERENT MANNERS OR DIFFER IN LIGHTING INTENSITY. CONTRACTOR SHALL BE RESPONSIBLE FOR IDENTIFYING THE DIFFERENT DISTRIBUTION PATTERNS AND LUMEN PACKAGES AND MATCHING THE LOCATIONS OF THESE AS SHOWN IN PLANS. DEVIATION FROM PLANS WILL RESULT IN FAILURE TO MEET LOCAL LIGHTING ORDINANCES AND DESIGN INTENT AND WILL NEED TO BE CORRECTED BY CONTRACTOR AT NO ADDITIONAL CHARGE TO THE LIGHTING DESIGNER.

CONTRACTOR TO ENSURE THE LIGHT POLE AND HANDICAP PARKING SIGN ARE AT LEAST 2' FROM THE BACK OF CURB TO PREVENT VEHICLES FROM STRIKING THE LIGHT POLE OR HANDICAP PARKING SIGN. PROPOSED LIGHT POLE BASES SHOWN AT A MINIMUM OF 2'-6" FROM BACK OF CURB TO CENTER OF POLEBASE. ENGINEER TO VERIFY PROPOSED LOCATIONS FOR ANY CONFLICTS OR MISPLACEMENTS. REPORT TO LIGHTING DESIGNER ANY DISCREPANCIES OR CONFLICTS.



2 AREA LIGHT DETAIL  
SCALE: NOT TO SCALE

**Features & Specifications**

- Optical System**
  - State-of-the-art slice medium optic sheet delivers industry leading optical control with an integrated package to provide 90° beam spread optical control in 1° increments.
  - Proprietary silicone reflector optic provide exceptional coverage and uniformity in R5 Types 2, 3, 5x, F1 and F3A.
  - Slice optic repeat cover and allow or stack with age and provide a typical light transmission of 98%.
- Electrical**
  - High-performance driver features over-voltage, under-voltage, short-circuit and over-temperature protection.
  - 0-10V dimming (0% - 100%) required.
  - Standard Universal Voltage (120-277 VAC) Input 50/60 Hz or optional High Voltage (347-480 VAC).
  - L90 Lifetime Life >100K Hours (See Lumen Maintenance on Page 3)
  - Total harmonic distortion <20%
  - Operating temperature: -40°C to +52°C (-40°F to +122°F), 45° lower storage temp to +65°C.
  - Power factor: >0.9
  - Input power stage compliant over life.
  - Fast response time (microseconds) means a minimum Category C Low Flicker (per ANSI/IEEE C82.41.2).
  - High efficiency LEDs mounted in metal-core circuit board to maximize heat dissipation.
  - Terminal block provided accepts up to 10ga wire.
  - Components are fully assessed as suitable materials for corrosive conditions. Other samples with FCC standards. Drive and key electronic components can easily be accessed.

**Product Dimensions**

MANUFACTURER SPECIFICATION SHEET FOR SITE FIXTURES

**LED CANOPY LIGHT - LEGACY™ (CRUS)**

- LENS** - Features an array of reflect, dust proof, high brightness, high efficiency LED chips; 3000K color temperature, 70 CRI (minimum).
- DRIVE CURRENT** - Choice of Very Low Voltage (VTLV), Low Voltage (LV), Super Star (SS), High Output (HO) or Very High Output (VHO).
- OPTICAL DISTRIBUTION** - Choice of Symmetrical or Asymmetrical, which directs light through a clear tempered glass lens to provide a uniform distribution of light to vertical and horizontal surfaces.
- OPTICAL LIMIT** - Features an ultra-thin 7/16" profile die-cast housing, with a flat glass lens; lens is water-resistant, sealed to an IP67 rating; integral dust cap; lens does not trap dirt and grime, ensuring best lighting performance over the life of the fixture.
- PRECISION STARBUZZ™ VENT** - Luminaire assembly incorporates a precision starbuzz vent to provide heat rejection and airflow.
- BACKSCATTER LOCATION** - Designed for sign and for road applications, product is suitable for Class 1 Situation 2 only when properly installed per LSI installation instructions. (See back sheet.)
- DRIVER HOUSING** - Die-cast aluminum, vent location called dimensional enclosure to divert driver convective heat to ground water entry, prevent heat conduction of primary wiring and components to attenuate the thermal conductivity ampereage available. Seals to optical housing via one-piece sealed silicone gasket.
- OPERATING TEMPERATURE** - -40°C to 50°C (-40°F to +122°F)
- ELECTRICAL** - Universal voltage power source, 120-277 VAC, 50/60 Hz Input. Drivers feature two-stage surge protection; including surge voltage over protection and 100% electronic driver; IEEE C82.41.2-2002, Supersafe 1 Location Category C.
- FINISH** - Standard color is white and is finished with LSI's EverFinish™ powder coat process. Textured stainless steel exterior exterior finishes without UV coating.
- INSTALLATION** - One piece installation. No additional external hardware is required. Unit is designed to quickly retrofit into existing Canopy Light™ 17" then as well as existing LSI Canopy Light™ 17" and to meet or exceed LSI's original design specifications. (See back sheet) as well as for replacement and 2nd installation. (See separate spec sheet). Support brackets are provided to ensure proper mounting of the canopy.
- SHIPPING WEIGHT** - 97 pounds (empty pack), 48 pounds (boxed pack).
- EXPECTED LIFE** - 100,000 to 100,000 hours depending upon the ambient temperature of the installation location. See LSI web site for 90,000+ packages.
- WARRANTY** - Limited 5-year warranty.
- CONSTRUCTION** - UL and ETL listed to UL 1386, UL 1585 and other U.S. and International safety standards. Suitable for incandescents.
- TEMPERATURE CLASSIFICATION** - The surface temperature of this product will not rise above 130°C, within a 40°C ambient.
- PHOTOMETRICS** - Please visit our web site at [www.lsi-lighting.com](http://www.lsi-lighting.com) for outdoor photometric data.
- See Group A, B, C, and D - Group A, Anytime / Group B, Anytime / Group C, Prepare and Deploy / Group D, Services, Robot, Measure & Prepare**

Project Name: \_\_\_\_\_ Region: \_\_\_\_\_  
 Drawing No: \_\_\_\_\_ Date: \_\_\_\_\_  
 Drawing By: \_\_\_\_\_  
 Checked By: \_\_\_\_\_  
 Scale: 1"=20'-0"

MANUFACTURER SPECIFICATION SHEET FOR CANOPY FIXTURE

**Galloway**  
 6162 S. Willow Drive, Suite 230  
 Greenwood Village, CO 80111  
 303.770.8884  
 gallowayus.com

**MURPHY EXPRESS**  
 LEXINGTON, SOUTH CAROLINA  
 (NW Corner Highway 1 & Oak Drive)

Project No: MOC9744  
 Sheet No: 1'-20'-0"  
 Designed by: JMG  
 Drawn by: JMG  
 Date: May, 2020  
 Disk File: LT Photometric - Lexington\_SC\_2020 (Dek.Dr.)

**PHOTOMETRIC SITE PLAN**

L-1.0