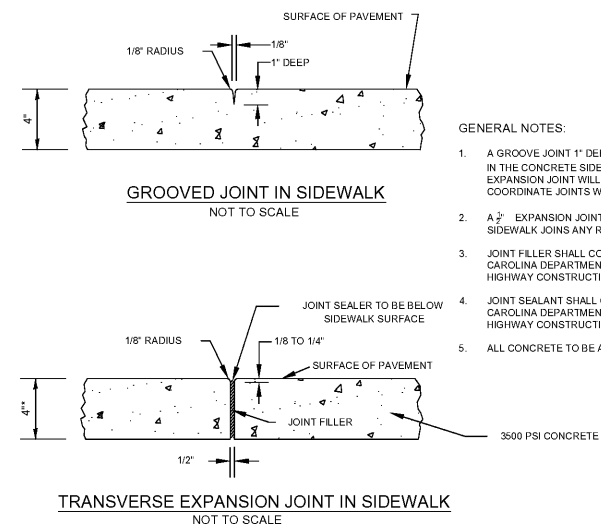
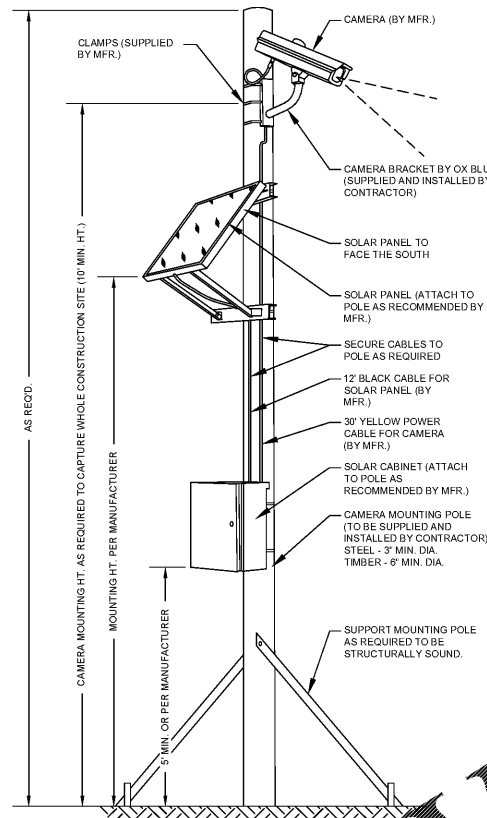


S11 ASPHALT/CONCRETE BUTTING JOINTS



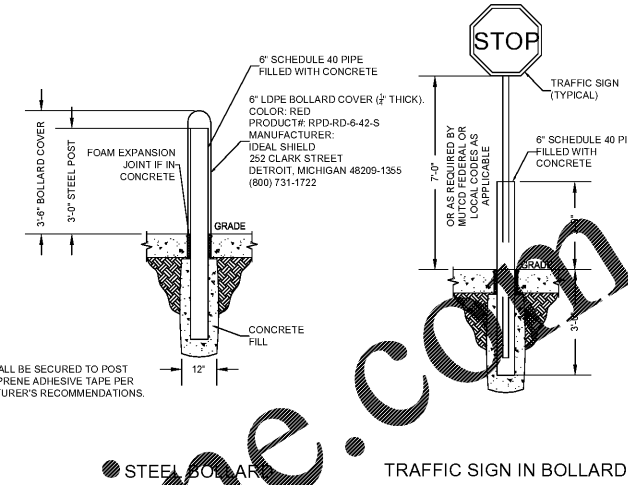
S12 CONCRETE SIDEWALK



- NOTES:
- CAMERA AND SOLAR POWER STATION BY OX BLUE CORPORATION.
 - CAMERA TO BE INSTALLED AND ACTIVATED PER MFR. REQUIREMENTS 14 DAYS PRIOR TO CONSTRUCTION.
 - MOUNTING POLE TO BE SUPPLIED AND INSTALLED BY CONTRACTOR.
 - LAG BOLTS/CLAMPS USED TO ATTACH CAMERA, SOLAR PANEL, SOLAR CABINET TO POLE ARE TO BE SUPPLIED AND INSTALLED BY CONTRACTOR.
 - CONSTRUCTION CAMERA SHALL BE COORDINATED WITH MURPHY CONSTRUCTION MANAGER AND PLACED ON MURPHY PROPERTY WHERE THE ENTIRE WORK SITE CAN BE COVERED WITH CAMERA.
 - MOUNTING POLE TO BE STRUCTURALLY SOUND & WITHSTAND 100 LBS OF FORCE AT 5' ABOVE GROUND.
 - FOR ANY MOUNTING OF CAMERA ON OFF-SITE STRUCTURE, CONTRACTOR MUST SECURE PERMITS AND/OR PERMISSION FROM RESPECTIVE OWNERS AND PROVIDE TO MURPHY.
 - MOUNTING CAMERA SYSTEM ON TRUCK SHACK IS NOT ALLOWED.

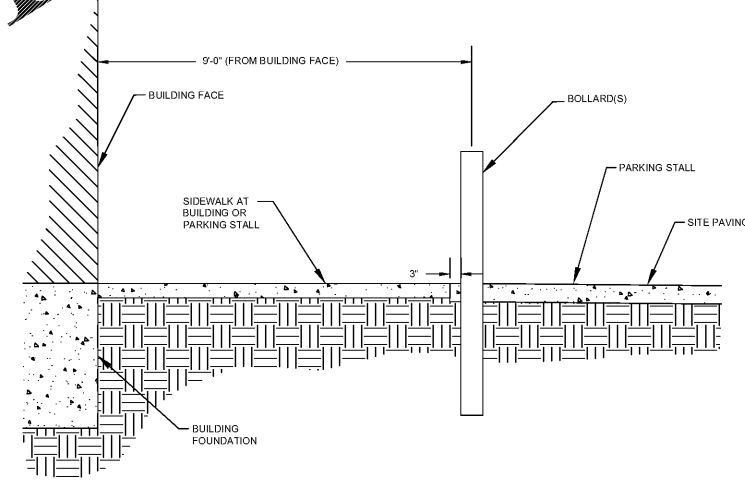
Order Plans @ www.LDILine.com

S15 CONSTRUCTION CAMERA

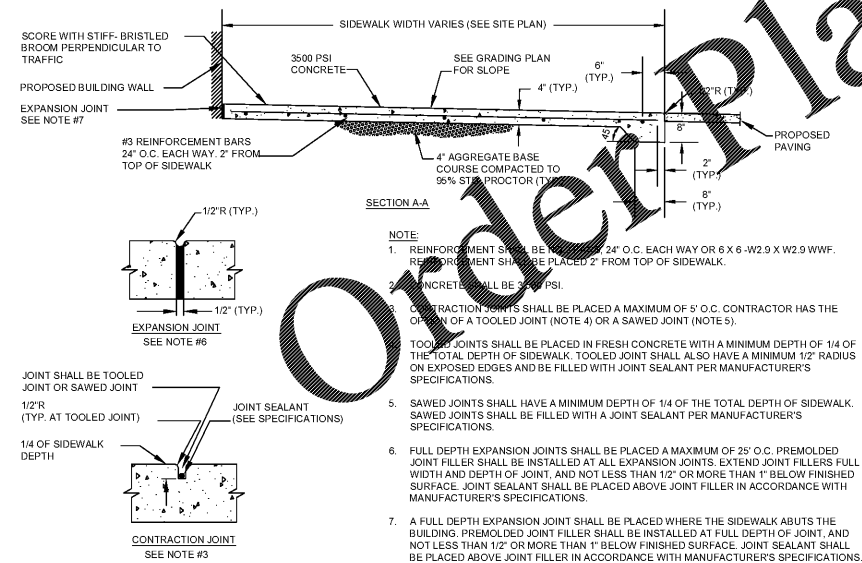


- NOTES:
- COVER SHALL BE SECURED TO POST WITH NEOPRENE ADHESIVE TAPE PER MANUFACTURER'S RECOMMENDATIONS.

S16 BOLLARD

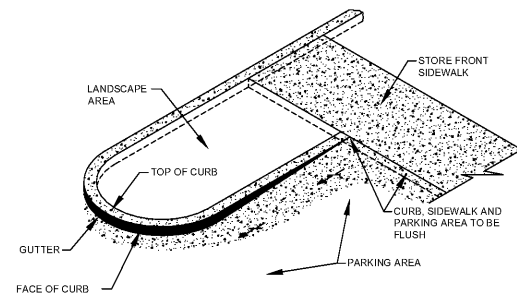


S17 BOLLARD LOCATION AT BUILDING

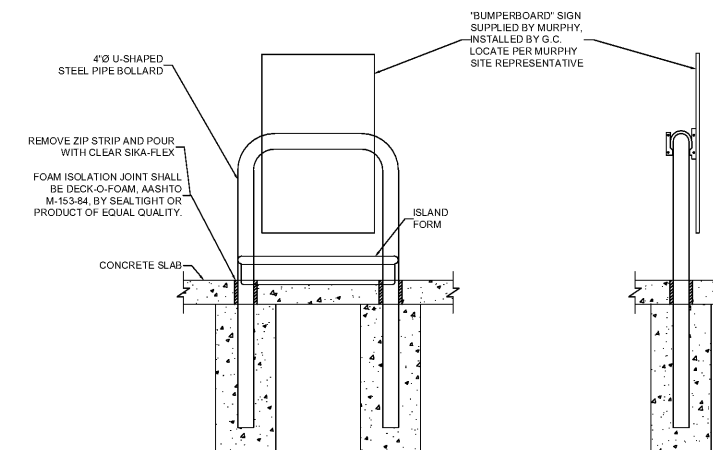


- NOTE:
- REINFORCEMENT SHALL BE PLACED 24\"/>

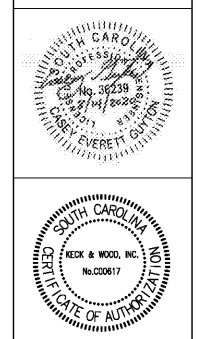
S13 CONCRETE SIDEWALK AT BUILDING (FLUSH TRANSITION)



S15 CURB ISLAND AT STORE FRONT



S18 U-BUMPER



CG	DRW
CG	DES
GS	PM
MM	PRN
08/05/20	DATE
REV-5	

Keck & Wood
COLLABORATION BY DESIGN
4825 Palmetto Drive, Suite 210
North Charleston, SC 29605
(843) 278-8666
keckandwood.com

MURPHY OIL USA, INC.
200 PEACH STREET
EL DORADO, AR 71730
MURPHY USA