

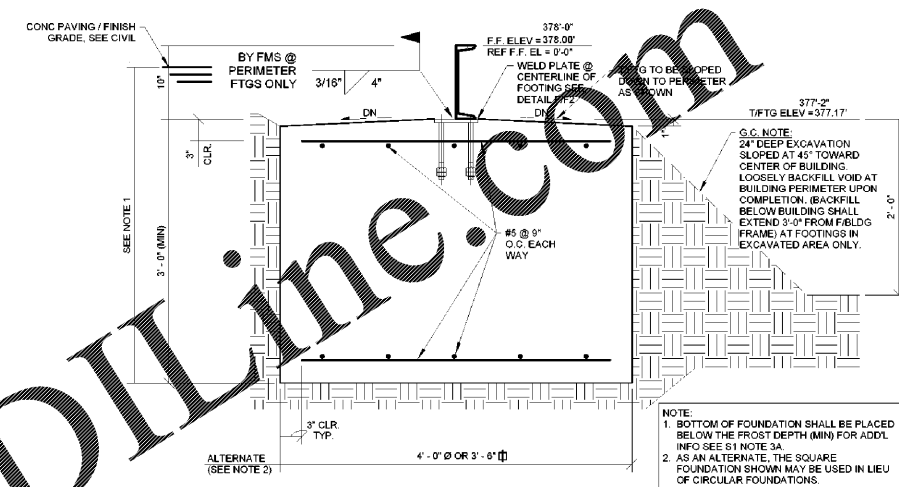
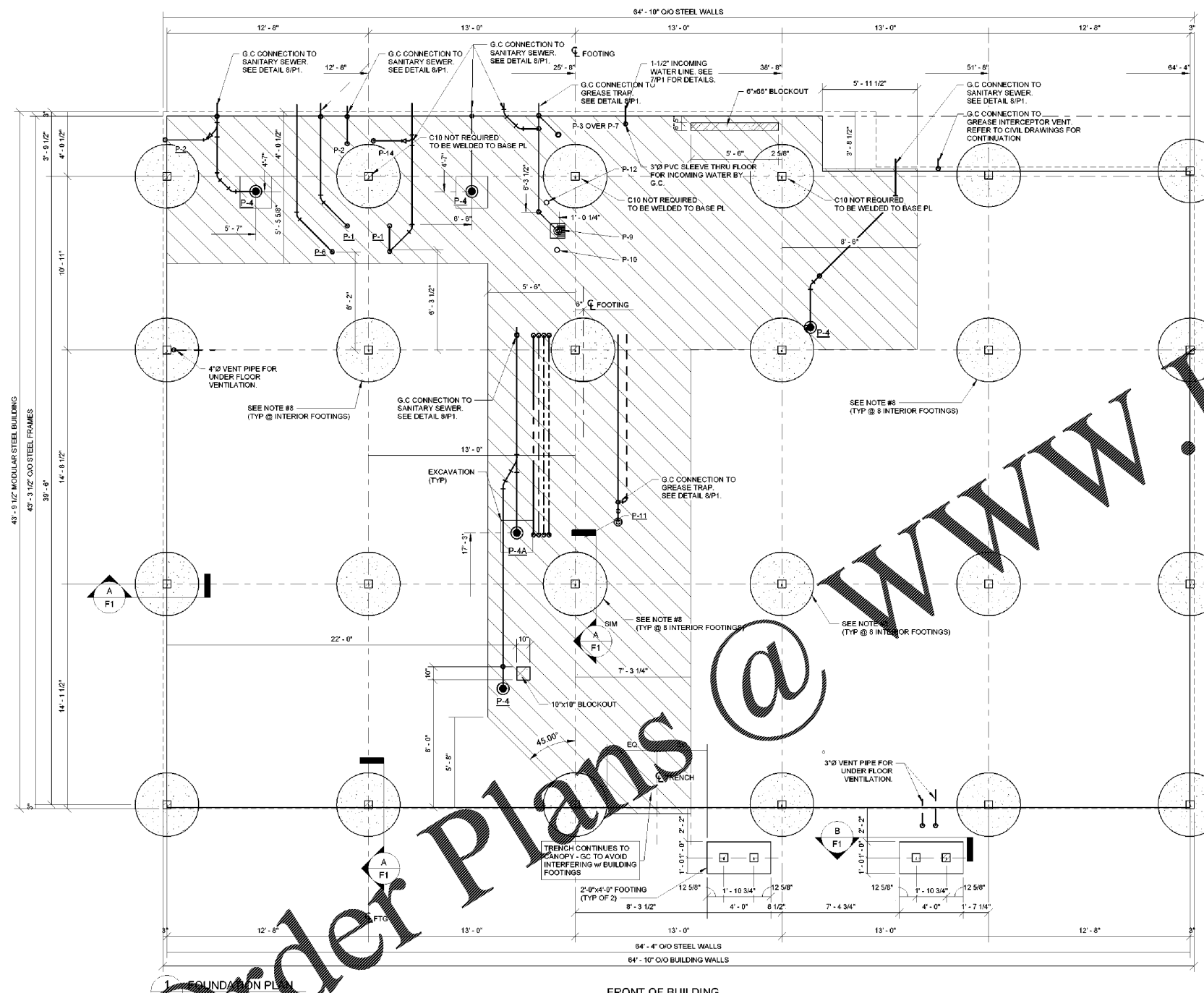
COPYRIGHT NOTICE

This drawing is the property of the above referenced Professional and is not to be used for any purpose other than the specific project and site named herein, and cannot be reproduced in any manner, without the express written permission from the Professional.

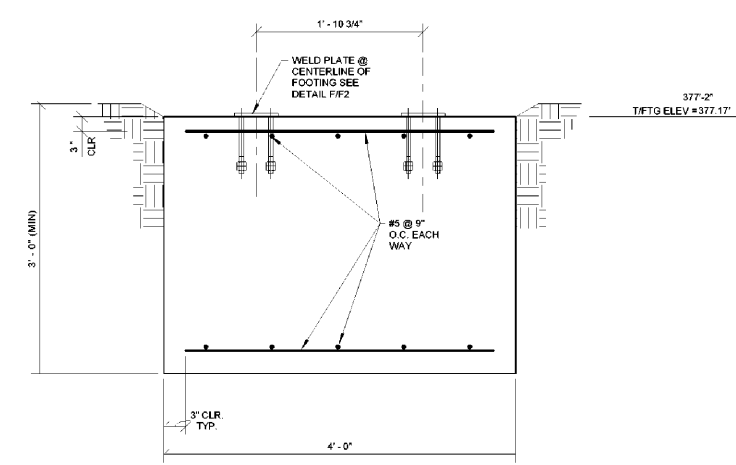
ISSUE RECORD

DATE	REV.	DESCRIPTION
05/20/2020		PERMIT SUBMISSION SET
08/07/2020	1	OUT TO BID SET

BUILDING FINISHED FLOOR EL =	378.00' (SEE CIVIL)
BUILDING TOP OF FOOTING (T/FTG) EL =	377.2' (TYPICAL)



A FOOTING DETAIL
F1 1" = 1'-0"



B FOOTING DETAIL
F1 1" = 1'-0"

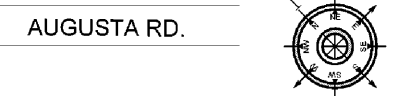
Order Plans @ www.LDILine.com

NOTE: ALL FULL DIMENSIONS ARE FROM FACE OF BLDG FRAME.

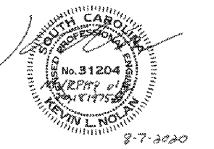
FOUNDATION PLAN NOTES:

- SEE SHEET S1 FOR STRUCTURAL GENERAL NOTES, GEOTECHNICAL REPORT AND REQUIREMENTS SEE SHEET S1 SECTION 3.B.
- ALL ELEVATIONS REFERENCED FROM FINISH FLOOR ELEVATION OF 0' 0" FOR REFERENCE ONLY. SEE SITE PLAN FOR ACTUAL FINISH FLOOR ELEVATION.
- TOP OF FOOTING ELEVATION = (+)0'-10" UNLESS NOTED OTHERWISE. T/F = TOP OF FOOTING.
- SEE ARCH DWGS FOR ALL DIMENSIONS NOT SHOWN.
- CONTRACTOR TO PREPARE SUBGRADE FOR BUILDING PAD AND PAVING AREAS PER GEOTECHNICAL ENGINEER'S REPORT AND RECOMMENDATIONS.
- G.C. SHALL COORDINATE ALL PLUMBING DIMENSIONS AND INFORMATION WITH DRAWING "P1".
- THE CONTRACTOR SHALL BE SOLELY RESPONSIBLE FOR SOIL CONDITIONS & SUBGRADE PREPARATION PER THE GEOTECHNICAL REPORT.
- INTERIOR FOOTINGS DO NOT REQUIRE C-10 TO BE WELDED TO BEARING PLATE.
- BACKFILL EXCAVATION TO 8" BELOW BOTTOM OF STEEL FLOOR FRAMING, UNLESS DESIGNATED WITH EXCAVATION HATCH. ONCE THE PIPING IS COMPLETE IN THE HATCHED AREA, THE AREA GETS BACKFILLED.

NOTE:
BUILDING FINISH FLOOR ELEVATION = SEE CIVIL.
REF ELEVATION = 84'
TOP OF ALL BUILDING FOOTING EL = (+)0'-10"



PROFESSIONAL SEAL



PROFESSIONAL IN CHARGE

K NOLAN
PROJECT MANAGER
M YOUNG
QUALITY CONTROL
B MGLADE
DRAWN BY
D MAHONEY

PROJECT NAME



MURPHY OIL CONVENIENCE STORE
NW CORNER HWY 1 & OAK DRIVE, LEXINGTON SOUTH CAROLINA 29073



1801 Rockdale Industrial Blvd.
Coryers, Georgia 30012
Voice: (800) 368-6385
Fax: (770) 483-6037
FMS JOB NUMBER
C22MJ00061
FMS MODEL NUMBER
XXXXXX

PROJECT NUMBER
20181975.5

SHEET TITLE

FOUNDATION PLAN

SHEET NUMBER

F1

BAKER, INGRAM, & ASSOCIATES
STRUCTURAL ENGINEERS
TWO WHITE HORSE PIKE HADDON HEIGHTS, NJ 08035
(856) 310-1491 fax: (856) 310-1829