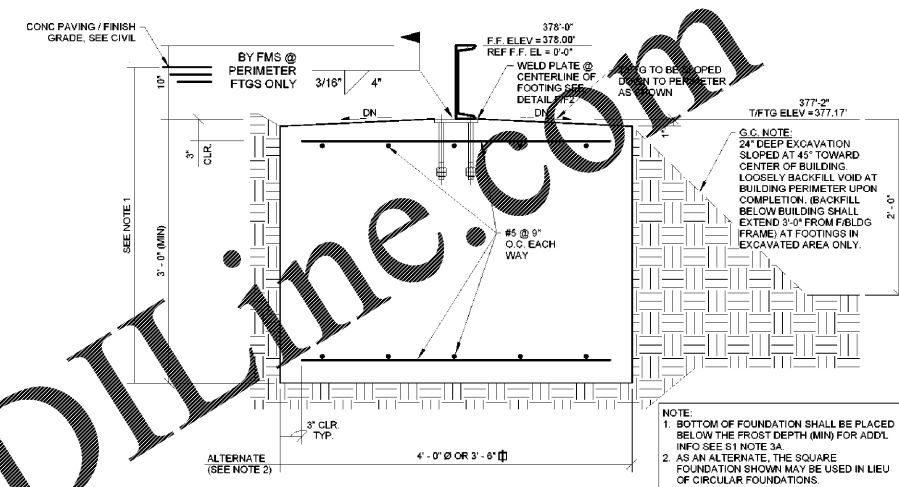
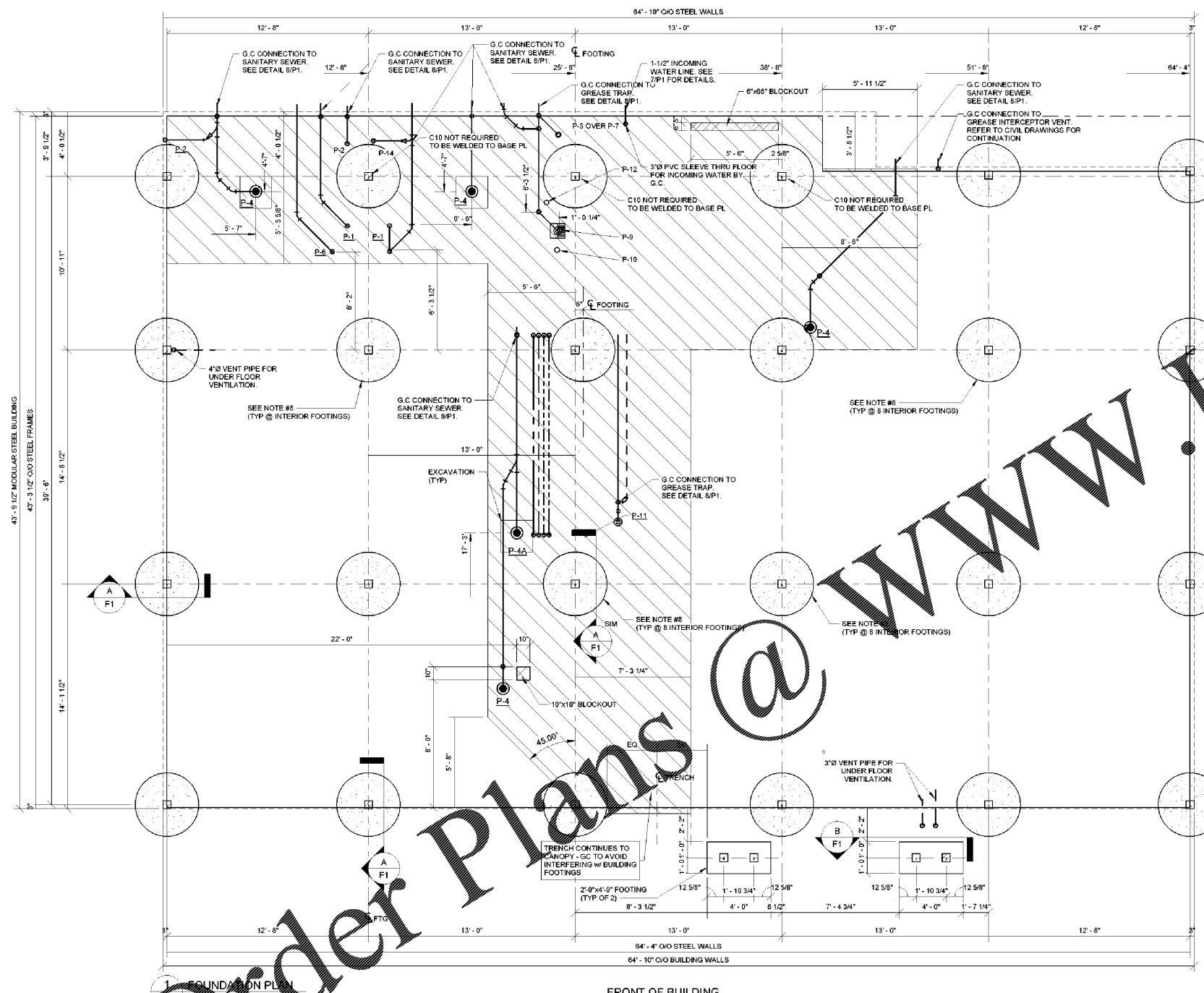
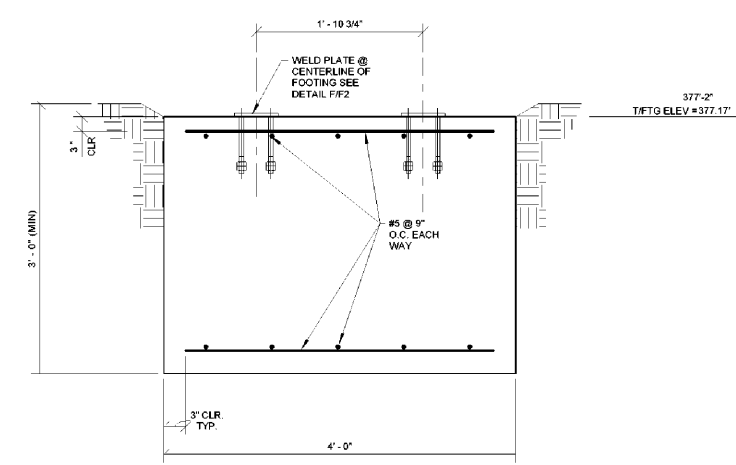


BUILDING FINISHED FLOOR EL =	378'-0" 378.00' (SEE CIVIL)
BUILDING TOP OF FOOTING (T/FTG) EL =	377'-2" 377.17' (TYPICAL)



A FOOTING DETAIL
F1 1" = 1'-0"



B FOOTING DETAIL
F1 1" = 1'-0"

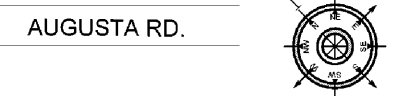
Order Plans @ www.LDILine.com

NOTE: ALL FULL DIMENSIONS ARE FROM FACE OF BLDG FRAME

FOUNDATION PLAN NOTES:

- SEE SHEET S1 FOR STRUCTURAL GENERAL NOTES, GEOTECHNICAL REPORT AND REQUIREMENTS SEE SHEET S1 SECTION 3.B
- ALL ELEVATIONS REFERENCED FROM FINISH FLOOR ELEVATION OF 0'-0" FOR REFERENCE ONLY. SEE SITE PLAN FOR ACTUAL FINISH FLOOR ELEVATION.
- TOP OF FOOTING ELEVATION = (+)0'-10" UNLESS NOTED OTHERWISE, T/F = TOP OF FOOTING.
- SEE ARCH DWGS FOR ALL DIMENSIONS NOT SHOWN
- CONTRACTOR TO PREPARE SUBGRADE FOR BUILDING PAD AND PAVING AREAS PER GEOTECHNICAL ENGINEER'S REPORT AND RECOMMENDATIONS.
- G.C. SHALL COORDINATE ALL PLUMBING DIMENSIONS AND INFORMATION WITH DRAWING "P1"
- THE CONTRACTOR SHALL BE SOLELY RESPONSIBLE FOR SOIL CONDITIONS & SUBGRADE PREPARATION PER THE GEOTECHNICAL REPORT.
- INTERIOR FOOTINGS DO NOT REQUIRE C-10 TO BE WELDED TO BEARING PLATE
- BACKFILL EXCAVATION TO 8" BELOW BOTTOM OF STEEL FLOOR FRAMING, UNLESS DESIGNATED WITH EXCAVATION HATCH. ONCE THE PIPING IS COMPLETE IN THE HATCHED AREA, THE AREA GETS BACKFILLED.

NOTE:
BUILDING FINISH FLOOR ELEVATION = SEE CIVIL
REF ELEVATION = 0'-0"
TOP OF ALL BUILDING FOOTING EL = (+)0'-10"



PROFESSIONAL SEAL



PROFESSIONAL IN CHARGE

K NOLAN
PROJECT MANAGER
M YOUNG
QUALITY CONTROL
B MGLADE
DRAWN BY
D MAHONEY

PROJECT NAME



MURPHY OIL CONVENIENCE STORE
NW CORNER HWY 1 & OAK DRIVE, LEXINGTON SOUTH CAROLINA 29073



1801 Rockdale Industrial Blvd.
Coryers, Georgia 30012
Voice: (800) 368-6385
Fax: (770) 483-6037
FMS JOB NUMBER: C23MJ00061
FMS MODEL NUMBER: XXXXXX

PROJECT NUMBER
20181975.5

SHEET TITLE

FOUNDATION PLAN

SHEET NUMBER

F1

PROTO V2.0 11/01/2019

BAKER, INGRAM, & ASSOCIATES
STRUCTURAL ENGINEERS
TWO WHITE HORSE PIKE HADDON HEIGHTS, NJ 08035
(856) 310-1491 fax: (856) 310-1829