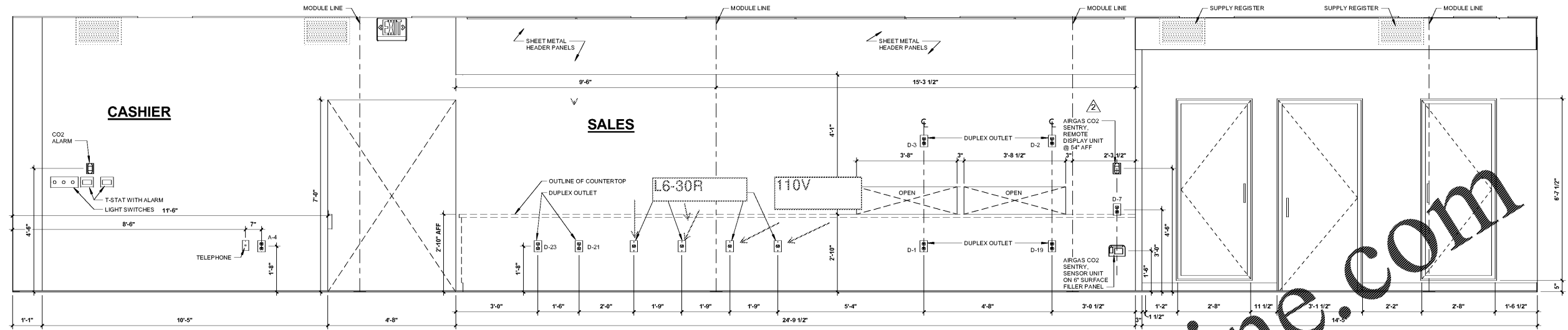


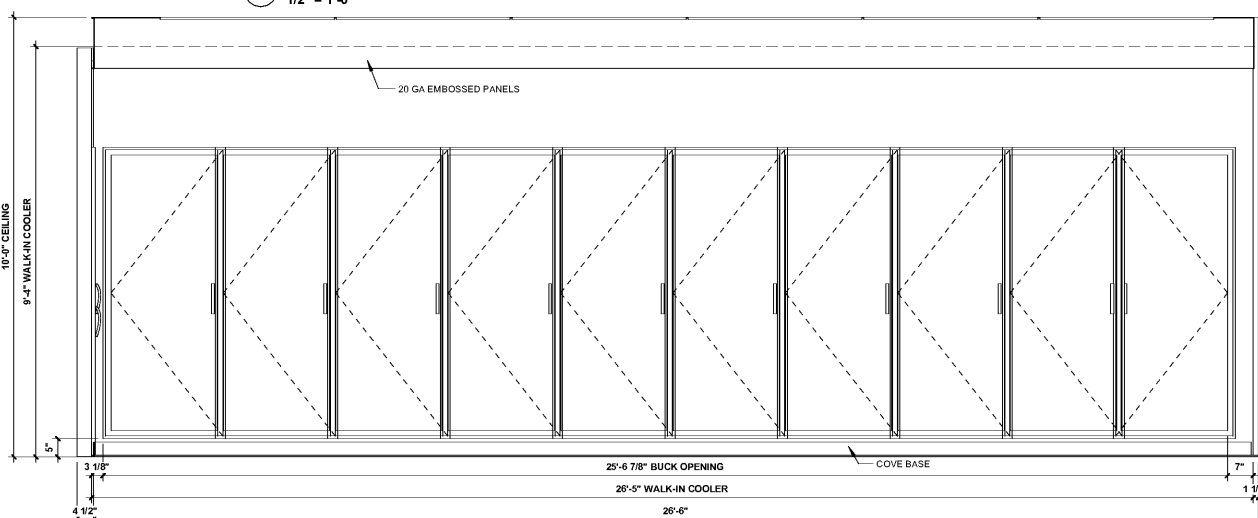
COPYRIGHT NOTICE
This drawing is the property of the above referenced Professional and is not to be used for any purpose other than the specific project and site named herein, and cannot be reproduced in any manner without the express written permission from the Professional.

ISSUE RECORD

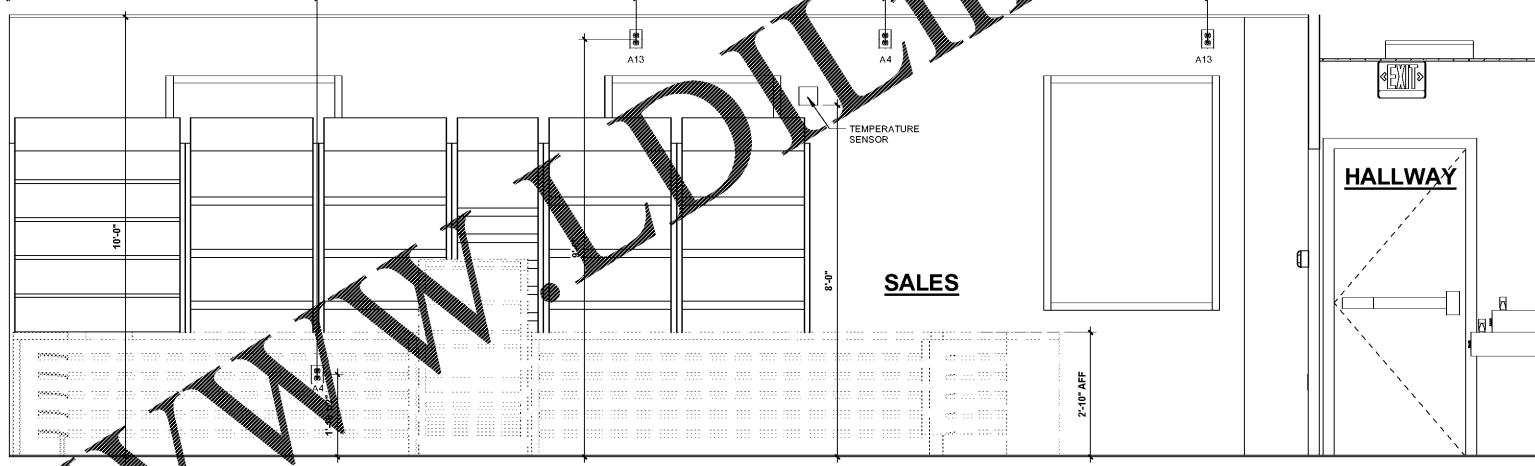
DATE	REV.	DESCRIPTION
09/10/2018		PERMIT SUBMISSION SET
11/16/2018	1	REVISED PERMIT SET
01/11/2019	2	RESPONSES TO A/E/C COMMENTS
01/26/2019	3	BID SET
03/27/2019	4	IFC SET



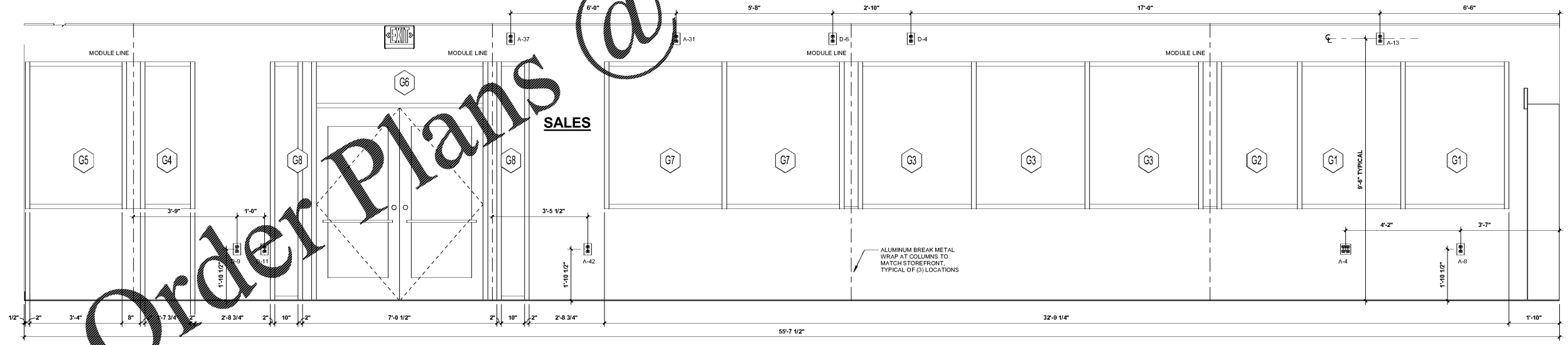
1 INTERIOR ELEVATIONS
1/2" = 1'-0"



2 INTERIOR ELEVATIONS
1/2" = 1'-0"



3 INTERIOR ELEVATIONS
1/2" = 1'-0"



4 INTERIOR ELEVATIONS
1/2" = 1'-0"

PROFESSIONAL SEAL



PROFESSIONAL IN CHARGE

SUSAN NELSON KOUGIAS
PROJECT MANAGER
MUDHGA CHAWATHE

QUALITY CONTROL
CHRIS CERBO

DRAWN BY
HP

PROJECT NAME

MURPHY EXPRESS

MURPHY OIL CONVENIENCE STORE

SEQ ROUTE 59 & 111TH. ST.

NAPERVILLE, IL 60564

FREY MOSS STRUCTURE

1801 Rockdale Industrial Blvd.
Conyers, Georgia 30012
Voice: (800) 366-6385
Fax: (770) 483-6387
FMS JOB NUMBER
G18ML00056
FMS MODEL NUMBER
XXXXXX

PROJECT NUMBER
20180295.5

SHEET TITLE

INTERIOR ELEVATIONS

SHEET NUMBER

E13

Order Plans @

WWW.LDLINE.COM