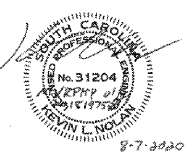


COPYRIGHT NOTICE
This drawing is the property of the above referenced Professional and is not to be used for any purpose other than the specific project and site named herein, and cannot be reproduced in any manner, without the express written permission from the Professional.

| ISSUE RECORD | |
|--------------|-----------------------|
| DATE | REV. DESCRIPTION |
| 05/20/2020 | PERMIT SUBMISSION SET |
| 08/07/2020 | 1 OUT TO BID SET |

PROFESSIONAL SEAL



PROFESSIONAL IN CHARGE

K. NOLAN

PROJECT MANAGER

M. YOUNG

QUALITY CONTROL

B. McGLADE

DRAWN BY

D. HANNEY

PROJECT NAME



MURPHY OIL CONVENIENCE STORE

NW CORNER HWY 1 & OAK DRIVE, LEXINGTON SOUTH CAROLINA 29073



1801 Rockdale Industrial Blvd.
Conyers, Georgia 30012
Voice: (800) 368-6385
Fax: (770) 483-6037
FMS JOB NUMBER: C23M100061
FMS MODEL NUMBER: XXXXXX

PROJECT NUMBER
20181975.5

SHEET TITLE

FLOOR FRAMING PLAN

SHEET NUMBER

E4

PROJECT NAME

MURPHY OIL CONVENIENCE STORE

NW CORNER HWY 1 & OAK DRIVE, LEXINGTON SOUTH CAROLINA 29073

PROFESSIONAL IN CHARGE

K. NOLAN

PROJECT MANAGER

M. YOUNG

QUALITY CONTROL

B. McGLADE

DRAWN BY

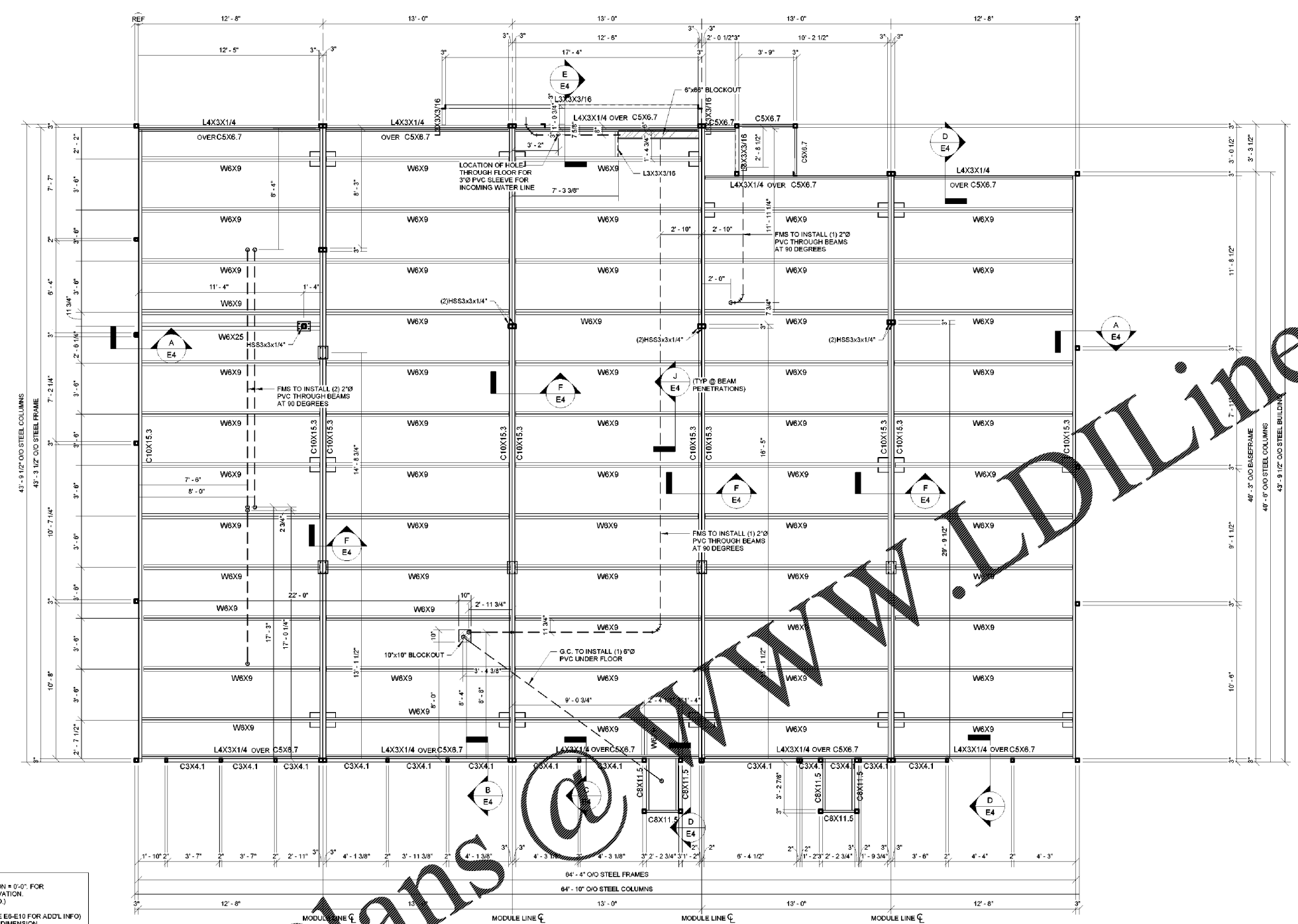
D. HANNEY

BAKER, INGRAM, & ASSOCIATES
STRUCTURAL ENGINEERS

270 WHITE HORSE PIKE, HADDON HEIGHTS, NJ 08035
(856) 310-1491 fax: (856) 310-1829

PROTO V2.0

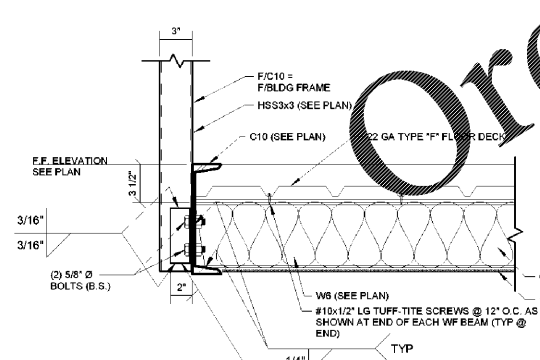
11/01/2019



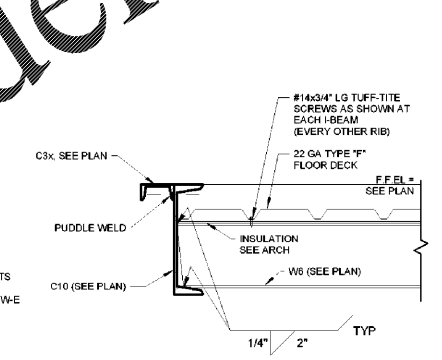
NOTE: ALL PULL DIMENSIONS ARE FROM FACE OF BLDG FRAME

- FRAMING PLAN NOTES:**
1. ALL ELEVATIONS REFERENCED FROM FINISH FLOOR ELEVATION + 0'-0" FOR REFERENCE ONLY. SEE CIVIL FOR ACTUAL FINISH FLOOR ELEVATION.
 2. BOLTS SHALL BE 5/8"x1 1/2" LG (M. BOLTS) (GRADE A307 U.N.O.)
 3. (B.S.) - PROVIDED & INSTALLED BY BUILDING SUPPLIER
 4. FOR WALL PANEL REQUIREMENTS, SEE SCHEDULE ON S1 (SEE E8-E10 FOR ADD'L INFO)
 5. COORDINATE ALL BLOCKOUT AND PLUMBING LOCATIONS AND DIMENSION INFORMATION WITH DRAWING "P1"

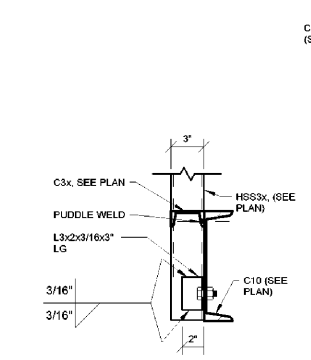
1 FLOOR FRAMING PLAN
E4
1/4" = 1'-0"



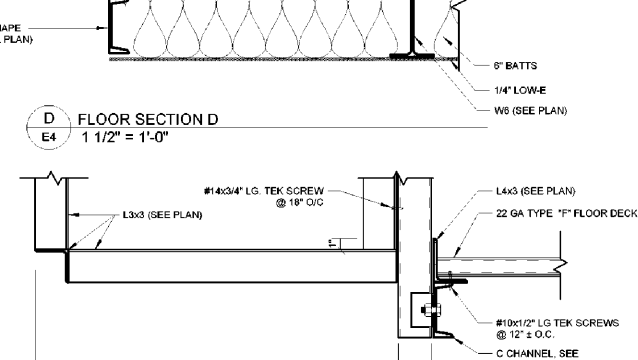
A FLOOR SECTION A
E4
1 1/2" = 1'-0"



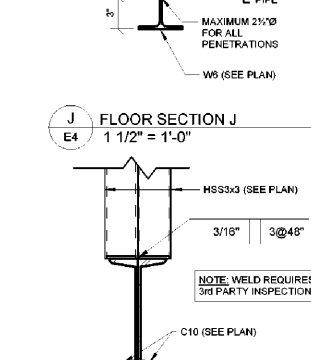
B FLOOR SECTION B
E4
1 1/2" = 1'-0"



C FLOOR SECTION C
E4
1 1/2" = 1'-0"



D FLOOR SECTION D
E4
1 1/2" = 1'-0"



J FLOOR SECTION J
E4
1 1/2" = 1'-0"