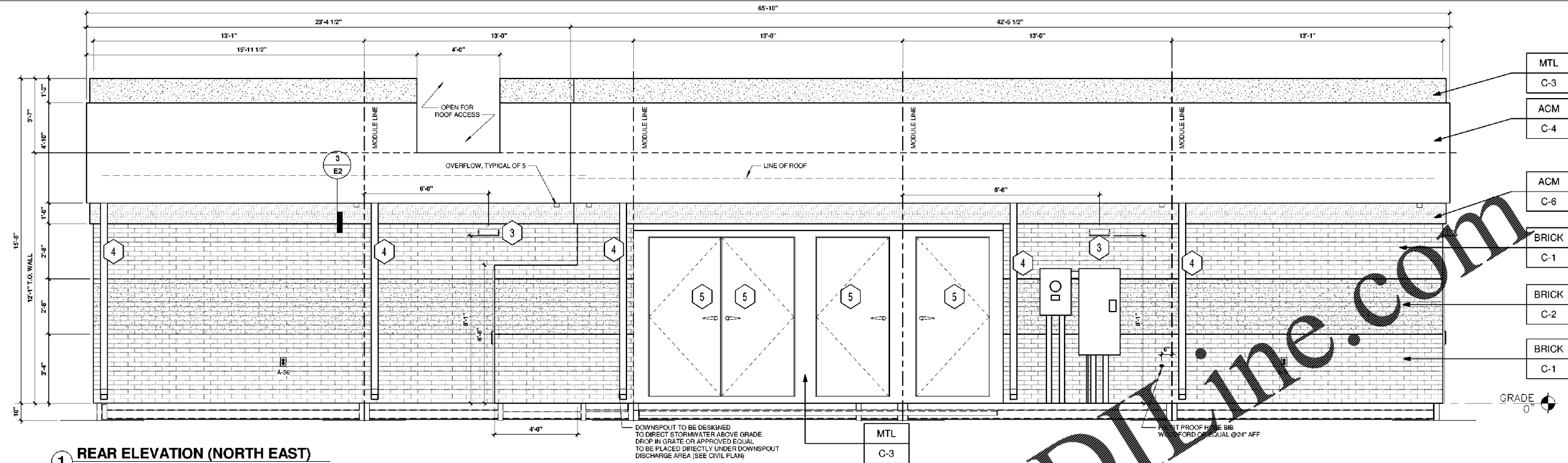


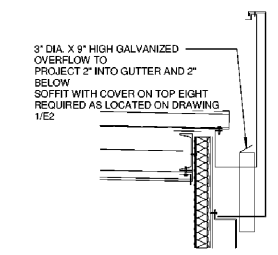
COPYRIGHT NOTICE
This drawing is the property of the above referenced Professional and is not to be used for any purpose other than the specific project and site named herein, and cannot be reproduced in any manner without the express written permission from the Professional.

ISSUE RECORD

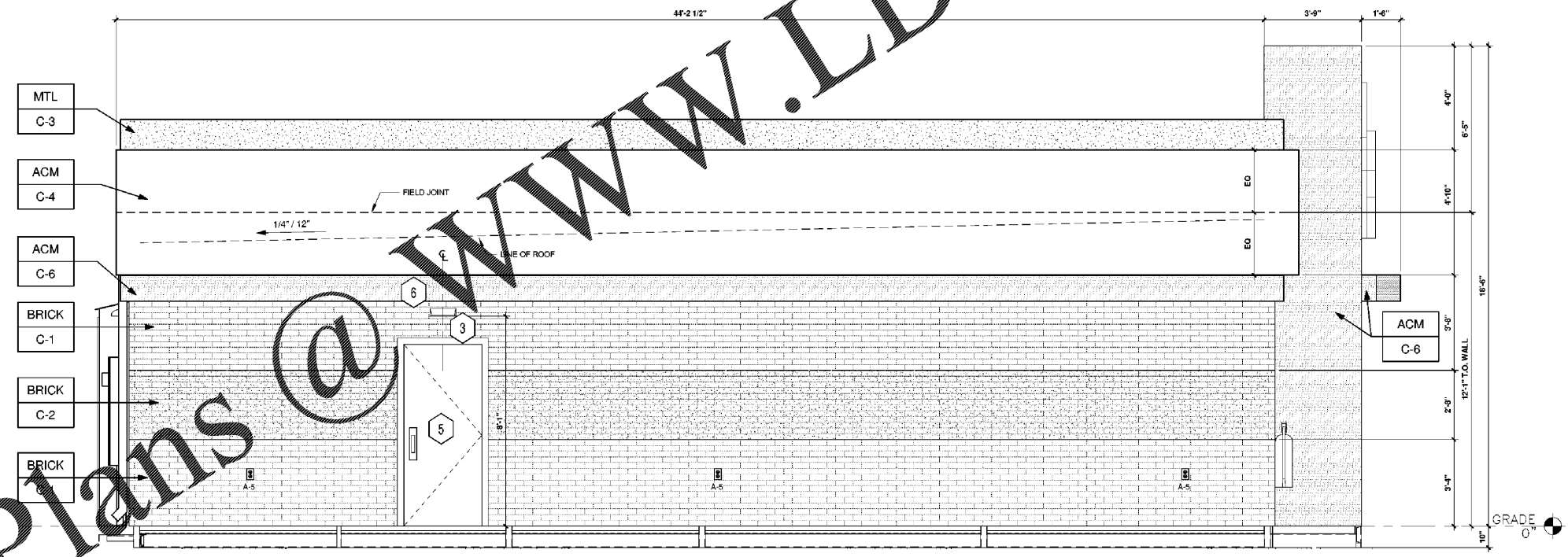
DATE	REV.	DESCRIPTION
05/20/2020		PERMIT SUBMISSION SET
06/07/2020	1	OUT TO BID SET



1 REAR ELEVATION (NORTH EAST)
3/8" = 1'-0"



3 OVERFLOW DETAIL
N.T.S.

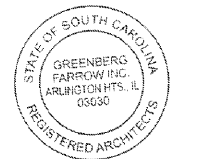


2 LEFT ELEVATION (NORTH WEST)
3/8" = 1'-0"

- KEYED NOTES:**
- 1 ROUTED LETTER LOGO SIGNAGE BY FMS
 - 2 CLEAR ANODIZED ALUMINUM STOREFRONT SYSTEM C-7
KAWNEER, YKK OR EQUAL
 - 3 EXTERIOR LIGHTING, REFER TO LIGHTING PLAN SHEET EL2
 - 4 4" x 4" PAINTED METAL DOWNSPOUTS C-3
 - 5 DOORS (EXTERIOR SIDE) AND DOOR FRAMES PAINTED C-3
 - 6 OPEN BY FMS
 - 7 MURPHY EXPRESS STAR LOGO SIGNAGE BY SIGN CONTRACTOR

- EXTERIOR FINISHES:**
- ACM ACM (3MM THICKNESS) BY FMS
 - BRICK THIN BRICK BY FMS
 - MTL 20 GA. SHEET METAL (UNLESS NOTED OTHERWISE) BY FMS

- EXTERIOR PAINT/COLORS:**
- C-1 THIN BRICK VENEER - LIGHT SANDSTONE VELOUR BY ENDURAMAX PREBLEND GREY COLOR GROUT BY FMS
 - C-2 THIN BRICK VENEER - EMPIRE IVORY VELOUR BY CAROLINA CERAMICS (WIRE CUT FINISH) WITH ENDURAMAX PREBLEND GREY COLOR GROUT BY FMS
 - C-3 DORMER BROWN SW #72C1 BY FMS
 - C-4 REYNOLDBOND #4 NATURAL BRUSHED ALUMINUM BY ARCONIC BY FMS
 - C-5 OPEN BY FMS
 - C-6 'PROGRAM RED' BY ALPOLIC BY FMS
 - C-7 CLEAR ANODIZED ALUMINUM STOREFRONT BY FMS



PROFESSIONAL SEAL



PROFESSIONAL IN CHARGE
SUSAN NELSON KOUTRAS

PROJECT MANAGER
JOHN NASHED

QUALITY CONTROL
CHRIS CERBO

DRAWN BY
SS

PROJECT NAME



MURPHY OIL CONVENIENCE STORE

4400 AUGUSTA RD & OAK DR,
LEXINGTON
SOUTH CAROLINA 29073



1801 Rockdale Industrial Blvd.
Conyers, Georgia 30012
Voice: (800) 368-6385
Fax: (770) 409-6037

FMS JOB NUMBER
C20181975
FMS MODEL NUMBER
XXXXXX

PROJECT NUMBER
20181975.5

SHEET TITLE

EXTERIOR ELEVATIONS

SHEET NUMBER

E2

Order Plans @ www.LDIDline.com