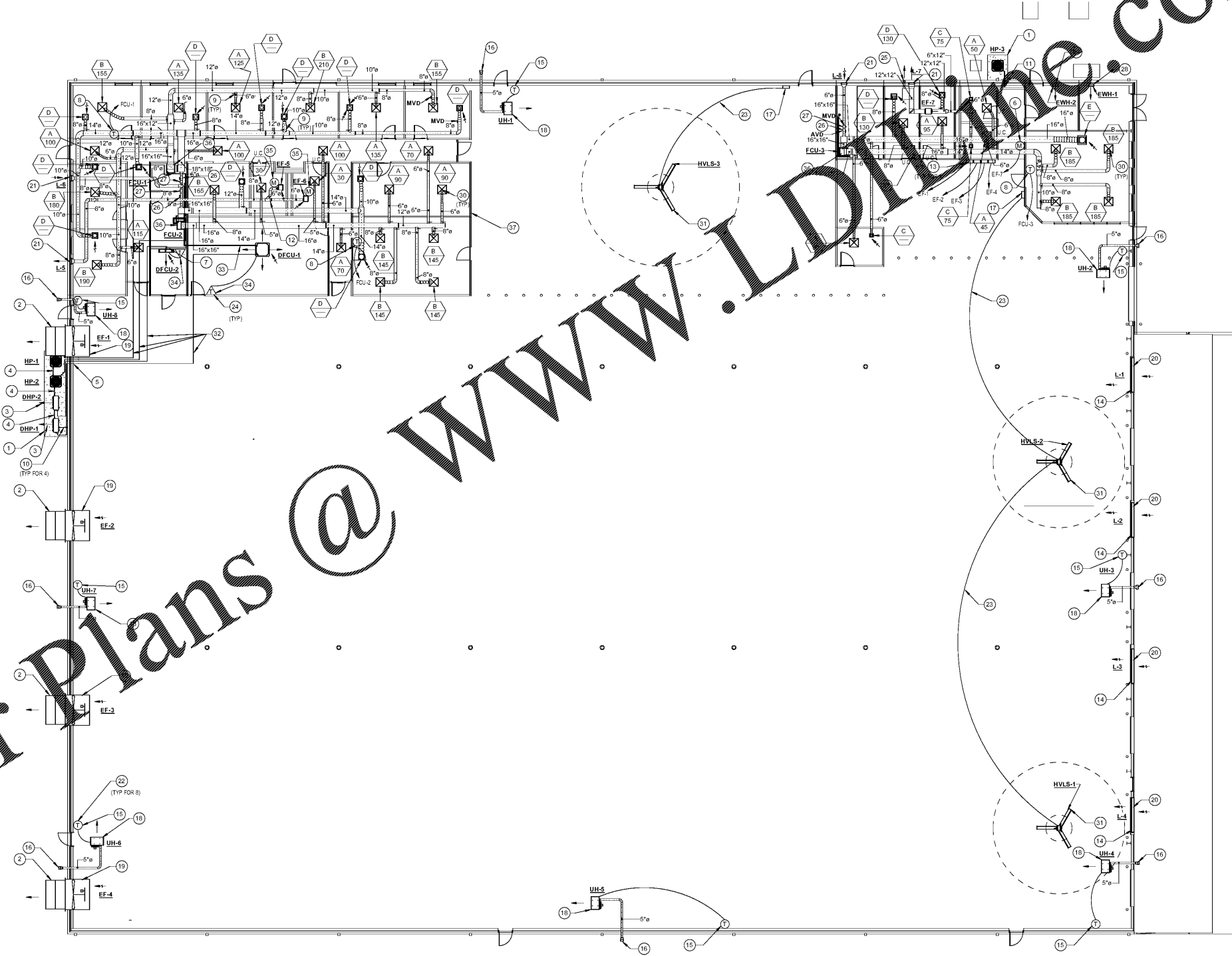





**NOTES: (THIS SHEET ONLY)**

1. 6" TALL CONCRETE PAD ABOVE GRADE ENSURE 12" MINIMUM BETWEEN EDGE OF EQUIPMENT AND PAD.
2. PAINTED WEATHERHOOD WITH 45° DISCHARGE AND BIRDSCREEN
3. ENSURE CONDENSER AIRFLOW IS AWAY FROM BUILDING.
4. MAINTAIN MINIMUM 24" BETWEEN UNITS FOR REFRIGERANT PIPE CONNECTION AND SERVICE ACCESS
5. REFRIGERANT PIPE DROPS EXPOSED ALONG INTERIOR WALL. THEN ELBOWS AT 12" ABOVE CONCRETE PAD AND PENETRATES WALL THRU SLEEVED OPENING. SEE PIPE SLEEVE DETAIL. GROUP ALL 4 REFRIGERANT PIPES IN SAME AREA OUTSIDE OF INTERIOR FENCE AND PROVIDE ALUMINUM JACKETING ON INSULATION FROM SLEEVE UP TO 1 FEET A.F.F. INSIDE THE WAREHOUSE BRACKET VERTICAL PIPE TO WALL SUPPLEMENTAL FRAMING ON 5 FOOT CENTERS.
6. FACTORY PROVIDED CONTRACTOR INSTALLED WALL MOUNTED MOTION DETECTOR TO START EXHAUST FAN WHEN OCCUPANCY IS DETECTED. PROVIDE 5 MINUTE (ADJUSTABLE) TIME DELAY. MOUNT AT 7'0" A.F.F.
7. 1" PVC CONDENSATE PIPE FROM DFCU PENETRATES WALL IN SLEEVED OPENING. THEN DROPS EXPOSED TO NEAR FLOOR. AND FOLLOWS WALL TO FLOOR DRAIN. SEE PLUMBING DRAWINGS FOR EXACT DRAIN LOCATION. SLOPE PIPE AT 1/4" PER FOOT AND SUPPORT WITH SPLIT HANGERS. ROUTE PIPE BEHIND FCU-2.
8. PROGRAMMABLE 24V THERMOSTAT MOUNT AT 4'0" A.F.F. COORDINATE EXACT LOCATION WITH OWNER.
9. PROVIDE 90° SADDLE TAP. SEE 90° SADDLE TAP TAKEOFF FITTING DETAIL.
10. MAINTAIN MINIMUM 24" BETWEEN UNIT AND EXTERIOR WALL.
11. REFRIGERANT PIPE DROPS IN CAVITY BETWEEN CMU AND GYP BOARD PARTITION WALL. PIPE THEN ELBOWS AT 12" ABOVE CONCRETE PAD THRU SLEEVED OPENING. SEE PIPE SLEEVE DETAIL. PROVIDE 12" x 12" ACCESS PANEL IN GYP BOARD FOR ACCESS TO REFRIGERANT ELBOW.
12. ENSURE 45° FITTING INTO EXHAUST DUCT TO PREVENT DISCHARGING EXHAUST AIR FROM FAN INTO EXHAUST DUCT OF OTHER FAN IF OTHER FAN NOT OPERATING.
13. PUSHBUTTON HOA STARTER BY MECHANICAL/FAN MANUFACTURER FOR EXHAUST FAN START/STOP AND LOUVER OPEN/CLOSE. GREENHECK MODEL M5K4 OR APPROVED EQUAL. MOUNT AT 4'0" B.E. A.F.F.
14. INTERLOCK 120VAC LOUVER ACTUATOR WITH PUSH BUTTON STARTER SO STARTING OF ANY FAN EF-1, 2, 3 OR 4 WILL OPEN ALL LOUVERS L-1 THRU L-4.
15. 24 VOLT THERMOSTAT BY UNIT HEATER MANUFACTURER. MOUNT AT 4'0" A.F.F. COORDINATE EXACT LOCATION WITH OWNER TO AVOID SHELVEING AND OTHER ITEMS.
16. FLUE CAP AND WALL PENETRATION APPROXIMATELY 20" A.F.F.
17. WALL MOUNTED KEYPAD CONTROLLER PROVIDED BY HVLS FAN MANUFACTURER FOR ALL FAN AND TROUBLESHOOTING FUNCTIONS MOUNT WITH B.E. 4'6" A.F.F. COORDINATE EXACT LOCATION WITH OWNER.
18. BOTTOM OF UNIT HEATER APPROXIMATELY 180" A.F.F. SUSPEND UNIT HEATER FROM FCU-1. DROP PIPES AND SUPPLEMENTAL FRAMING AT ROOF STRUCTURE. SEE GAS FIRED UNIT HEATER DETAIL-HORIZONTAL FLUE.
19. WALL MOUNTED PROPELLER FAN WITH WALL COLLAR. SEE WALL FAN DETAIL WITH WALL COLLAR. SEE ARCHITECTURAL DRAWINGS FOR EXACT ELEVATION OF FAN IN PFM WALL. APPROX. ELEVATION 21'0" A.F.F.
20. LOUVER IS MOUNTED IN METAL BUILDING WALL PANEL ABOVE ROLL UP DOOR. SEE ARCHITECTURAL FOR EXACT ELEVATION.
21. LOUVER IS MOUNTED IN CMU INTERIOR/METAL EXTERIOR PORTION OF WALL.
22. ALL THERMOSTAT WIRING FROM THERMOSTAT TO UNIT HEATER SHALL BE IN CONDUIT. CONDUIT SHALL BE PROVIDED BY CONTROLS CONTRACTOR.
23. ALL CAT 5E WIRING FROM KEYPAD TO HVLS FAN SHALL BE IN CONDUIT. CONDUIT SHALL BE PROVIDED BY CONTROLS CONTRACTOR.
24. ALL 24V AND 12VDC FAN COIL THERMOSTAT WIRING FROM THERMOSTAT TO FAN COILS AND HEAT PUMPS SHALL BE IN CONDUIT. CONDUIT SHALL BE PROVIDED BY CONTROLS CONTRACTOR.
25. 4" RESIDENTIAL DRYER VENT CONNECTS TO DRYER. SEE RESIDENTIAL DRYER VENT DETAIL. DRYER SHALL BE MINIMUM 12" OFF WALL TO ALLOW DRYER VENT TO BE INSTALLED AND TO ALLOW ACCESS TO DRYER VENT FOR CLEANING LINT. DRYER VENT PENETRATES WALL AND CONNECTS TO DRYER CAP.
26. 6" Ø SINGLE BLADE ROUND BALANCING DAMPER. SEE VERTICAL FCU DETAIL FOR ADDITIONAL INFORMATION.
27. 6" Ø SINGLE BLADE ROUND CONTROL DAMPER. SEE VERTICAL FCU DETAIL FOR ADDITIONAL INFORMATION.
28. COORDINATE EXACT WALL HEATER LOCATION WITH SPRINKLER PIPE AND FIRE CONNECTION PIPING.
29. COORDINATE EXACT WALL HEATER LOCATION WITH ELECTRICAL PANELS.
30. PROVIDE SHEET METAL 90° ELBOW AT ALL CEILING GRILLES THAT ARE CONNECTED TO FLEX DUCTS AS SHOWN IN CEILING GRILLE DUCT CONNECTION DETAIL.
31. FAN LOCATION IS COORDINATED WITH LIGHTING FIXTURES TO AVOID LIGHTS AND LIGHT SUPPORTS, AND FOR PROPER FLOOR COVERAGE. SUPPORT FAN FROM FACTORY FURNISHED UPPER MOUNTING KIT DESIGNED FOR 2-PURLINS OF FMB. PROVIDE MINIMUM 72" DROP LENGTH. PROVIDE EXACT DROP LENGTH NECESSARY TO SET BOTTOM ELEVATION. BOTTOM ELEVATION OF FAN BLADES SHALL BE APPROXIMATELY 27'0" A.F.F. COORDINATE WITH FIRE PROTECTION CONTRACTOR TO ENSURE SPRINKLER LOCATIONS IN PLAN VIEW AND VERTICAL CLEARANCE. SPRINKLER DEFLECTOR IN ELEVATION SHALL BE LOCATED TO COMPLY WITH NFPA-13.
32. REFRIGERANT PIPE ROUTING LOCATION IS SHOWN INDICATED FOR CLARITY DUE TO CONGESTED FLOOR PLAN. ACTUAL ROUTING LOCATION SHALL BE ENTERED IN THE OFFICE AREA, ROUTED FROM EQUIPMENT TO EXTERIOR WALL, AND ELBOWING AND SLEEVETTED TO WALL.
33. 1" PVC CONDENSATE PIPE CONNECTIONS ARE ROUTED TO AND DROPS EXPOSED IN MECH ROOM AND IS ROUTED TO FLOOR DRAIN. SEE PLUMBING DRAWINGS FOR EXACT DRAIN LOCATION. SLOPE PIPE AT 1/4" PER FOOT AND SUPPORT WITH SPLIT HANGERS. ROUTE PIPE BEHIND FCU-2.
34. HARD WIRED 12V DC THERMOSTAT/CONTROLLER PROVIDED BY DFCU MANUFACTURER. MOUNT AT 4'0" A.F.F. COORDINATE EXACT LOCATION WITH OWNER.
35. FACTORY PROVIDED CONTRACTOR INSTALLED CEILING MOUNTED MOTION DETECTOR TO START EXHAUST FAN WHEN OCCUPANCY IS DETECTED. PROVIDE 5 MINUTE (ADJUSTABLE) TIME DELAY.
36. SEE VERTICAL FCU DETAIL FOR MANY ITEMS NOT SHOWN ON FLOOR PLAN FOR CLARITY.
37. GENERAL: ABOVE OFFICE AREA, A COLD FORMED METAL FRAMING GRID SUPPORT SYSTEM IS BEING PROVIDED BY STRUCTURAL FOR UPPER SUPPORT STRUCTURE FOR DUCTS AND PIPING.



**MECHANICAL OVERALL FLOOR PLAN**  
3/32" = 1'-0"

ISSUANCES	
DATE	Description
KEY PLAN	
 <small>ANDREWS, HAMMOCK &amp; POWELL, INC. 250 Charter Lane Suite 100 Macon, Georgia 31210 Macon, Georgia 31210 Fax (478) 405-9210 WWW.AHPENGINEERS.COM</small>	
 	
<p><b>Manley Spangler Smith Architects</b> A Professional Corporation</p> <p>625 East Taylor St P.O. Box 880 Geffin, Georgia 30224 Office 770.227.5473 Fax 770.228.3442</p>	
<p>PROJECT: HENRY COUNTY SCHOOLS - DISTRIBUTION CENTER / SICT ACCESS CONNECTOR</p> <p>CLIENT: HENRY COUNTY BOARD OF EDUCATION</p>	
<p>SHEET TITLE: MECHANICAL OVERALL FLOOR PLAN</p>	
PROJECT NUMBER:	201827
DATE:	08.13.20
SCALE:	AS SHOWN
DRAWN BY:	JDR
CHECKED BY:	JDR
SHEET NO.:	M1.21