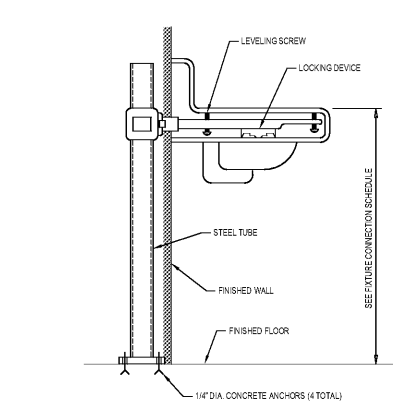
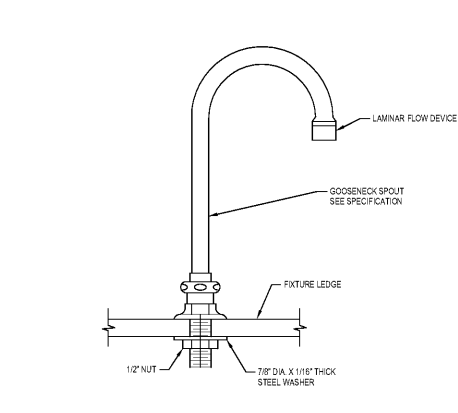


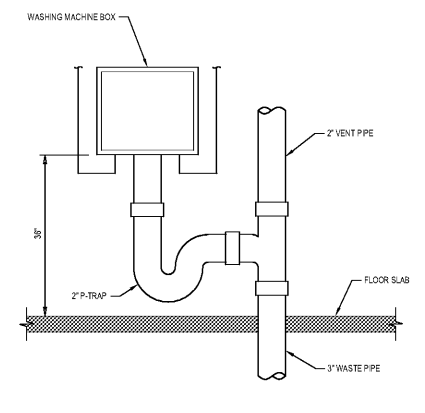
**TRAP PRIMER PIPING DETAIL**  
SCALE: NONE



**LAVATORY CARRIER DETAIL**  
SCALE: NONE



**GOOSENECK SPOUT MOUNTING DETAIL**  
SCALE: NONE

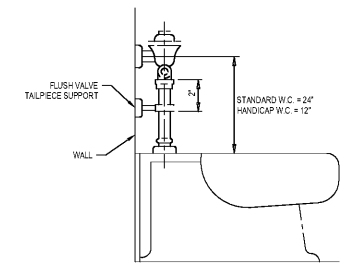


**WASHING MACHINE BOX DETAIL**  
SCALE: NONE

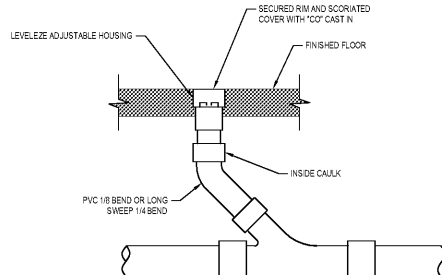
**PLUMBING LEGEND**

— W —	WASTE PIPING, SEE SPECIFICATION 201110
— CW —	COLD WATER PIPING, SEE SPECIFICATION 201110
— HW —	HOT WATER PIPING, SEE SPECIFICATION 201110
— G —	NATURAL GAS PIPING, SEE SPECIFICATION 201403
⊗	BALL VALVE (2\"/>

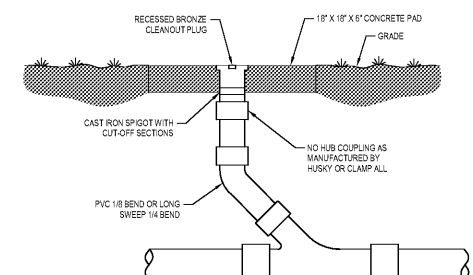
- GENERAL NOTES**
- THESE DRAWINGS ARE CONTRACT DOCUMENTS AND SHALL NOT BE USED FOR ARCHITECTURAL DRAWINGS FOR DIMENSIONS.
  - INSTALLATION OF PIPE AND EQUIPMENT SHALL BE COORDINATED WITH ALL OTHER WORK RELATED TO THE CONSTRUCTION OF THE BUILDING BUT NOT LIMITED TO: BUILDING STRUCTURE, HVAC EQUIPMENT, DUCT WORK AND MECHANICAL, ELECTRICAL WORK AND OWNER FURNISHED EQUIPMENT.
  - STRUCTURAL MEMBERS SHALL NOT BE PENETRATED WITHOUT APPROVAL FROM ARCHITECT.
  - ROUTE ALL PIPING THROUGH ROOF JOINTS SUBJECT TO FREEZING WITHIN THE BUILDING INSULATION ENVELOPE UNLESS OTHERWISE NOTED.
  - ROUTE SANITARY VENT PIPING SO VENTS THRU ROOF WILL BE A MINIMUM OF 18\"/>



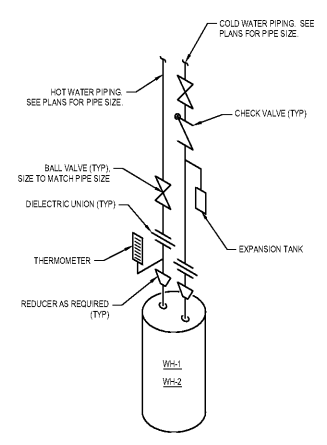
**WATER CLOSET FLUSH VALVE MOUNTING DETAIL**  
SCALE: NONE



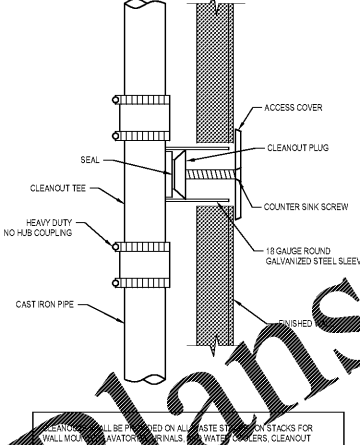
**FLOOR CLEANOUT**  
SCALE: NONE



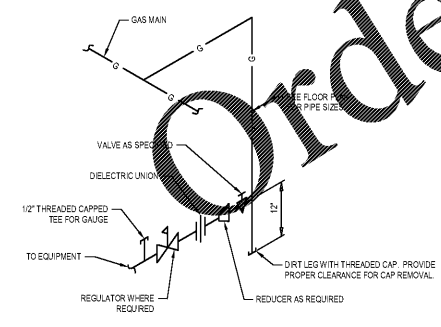
**OUTSIDE CLEANOUT**  
SCALE: NONE



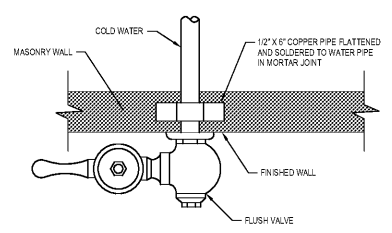
**ELECTRIC WATER HEATER PIPING SCHEMATIC**  
SCALE: NONE



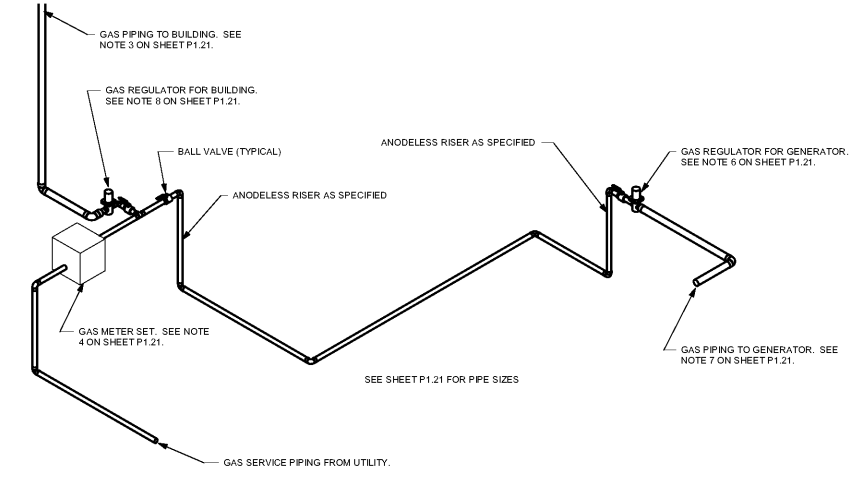
**WALL CLEANOUT**  
SCALE: NONE



**TYPICAL GAS CONNECTION DETAIL**  
SCALE: NONE



**FLUSH VALVE ANCHOR DETAIL**  
SCALE: NONE



**GAS METER SET DETAIL**  
SCALE: N.T.S.

**PLUMBING FIXTURE SCHEDULE**

MARK	FIXTURE	NOTES	RIM HEIGHT	COLD WATER		HOT WATER		WASTE	
				BRANCH	CONN	BRANCH	CONN	BRANCH	CONN
P-1	WATER CLOSET (ADA)	1.3	18"	1"	1"	--	--	4"	4"
P-2	LAVATORY (ADA, ADULT)	2.3	34"	1/2"	3/8"	1/2"	3/8"	2"	1-1/4"
P-3	DOUBLE BOWL SINK	3.4,6	C.T.	1/2"	3/8"	1/2"	3/8"	2"	1-1/2"
P-4	WATER COOLER	5	40"	1/2"	3/8"	--	--	2"	1-1/2"
P-5	WATER COOLER (ADA)	5.7	36"	1/2"	3/8"	--	--	2"	1-1/2"
P-6	SERVICE SINK	--	--	1/2"	1/2"	1/2"	1/2"	2"	2"
P-7	WASHING MACHINE BOX	--	36"	1/2"	1/2"	1/2"	1/2"	2"	2"
P-8	ICE MAKER BOX	--	12"	1/2"	1/2"	--	--	--	--
P-9	EMERGENCY SHOWER EYEWASH	--	72\"/>						

- FLOOR MOUNTED, FLUSH VALVE.
- WALL HUNG, FLUSH VALVE.
- HANDICAP ACCESSIBLE.
- 21" X 33" STAINLESS STEEL, SWIVEL FAUCET WITH LEVER HANDLES.
- WALL HUNG.
- MAXIMUM 5-1/2" DEEP.
- MOUNT AS REQUIRED BY MANUFACTURER TO MEET ADA REQUIREMENTS.

**ISSUANCES**

DATE	Description

**KEY PLAN**

**AH&P CONSULTING ENGINEERS**  
ANDREWS, HARMON & POWELL, INC.  
258 Charter Lane  
Suite 100  
Macon, Georgia 31210  
Macon, GA 31203  
Fax: (478) 405-8210  
WWW.AHPENGR.COM

**GEORGIA**  
Professional Engineer  
John A. Powell  
No. 11,180

**STATE OF GEORGIA**  
REGISTERED ARCHITECT  
Manley Spangler Smith Architects  
A Professional Corporation

625 East Taylor St  
P.O. Box 880  
Griffin, Georgia 30224  
Office: 770.227.5473  
Fax: 770.228.3442

PROJECT:  
HENRY COUNTY SCHOOLS - DISTRIBUTION CENTER

CLIENT:  
HENRY COUNTY BOARD OF EDUCATION

SHEET TITLE:  
PLUMBING LEGEND, SCHEDULE AND DETAILS

PROJECT NUMBER: 201827  
DATE: 08.13.20  
SCALE: AS SHOWN  
DRAWN BY: JMC  
CHECKED BY: JMC

SHEET NO.: P4.11