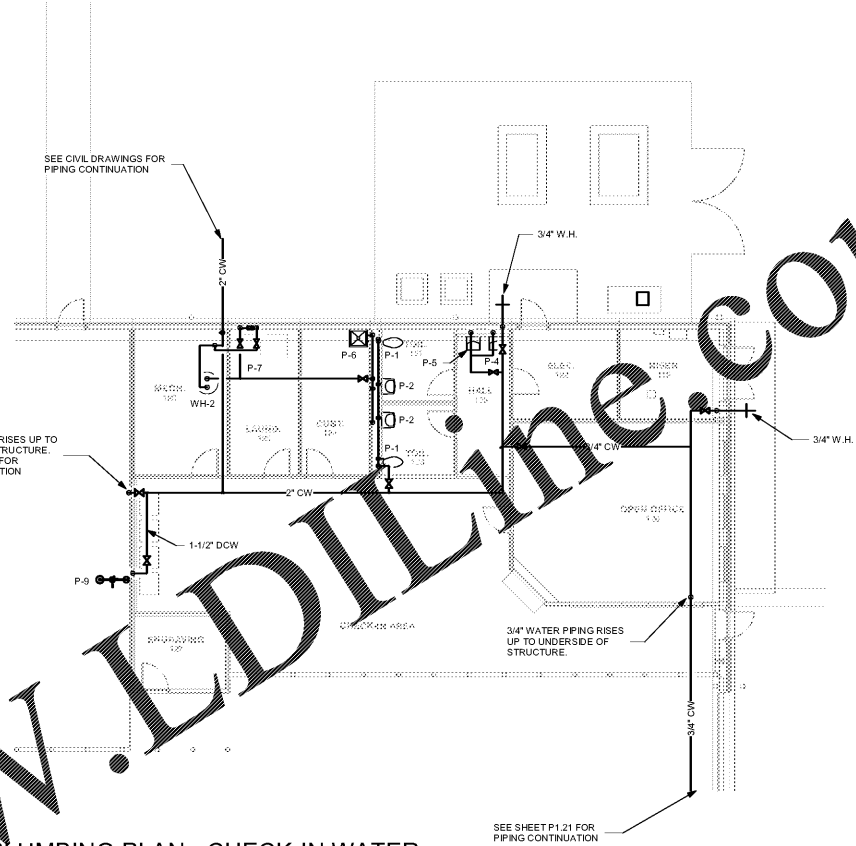


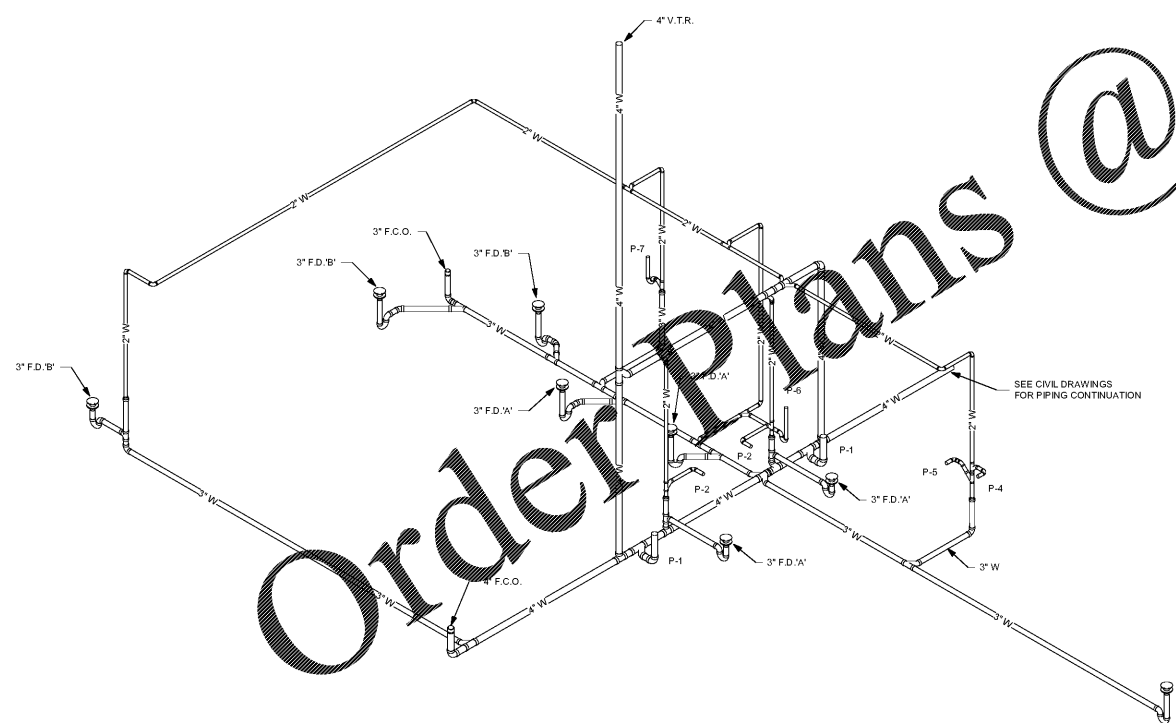
PLUMBING PLAN - CHECK-IN WASTE

SCALE: 1/8" = 1'-0"



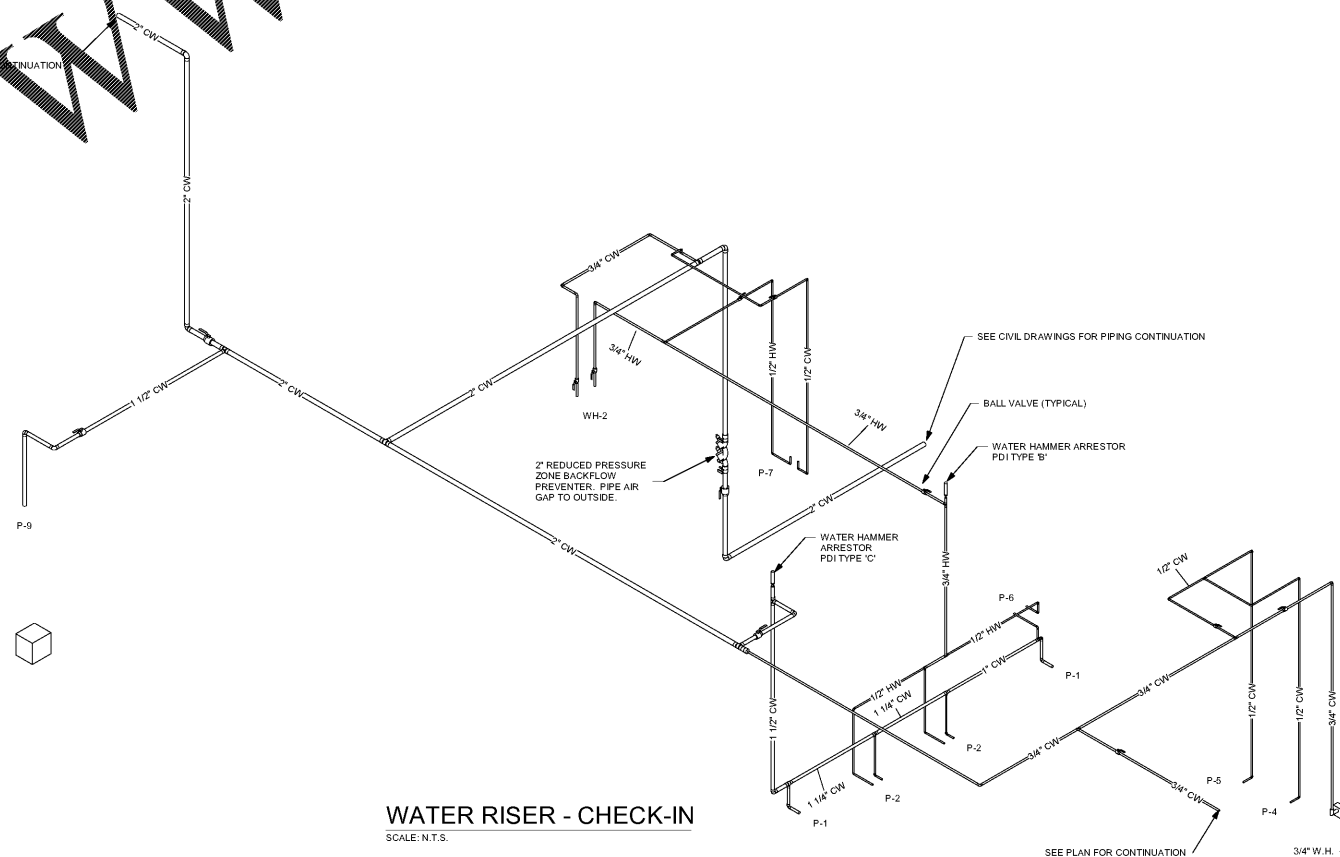
PLUMBING PLAN - CHECK-IN WATER

SCALE: 1/8" = 1'-0"



WASTE RISER - CHECK-IN

SCALE: N.T.S.



WATER RISER - CHECK-IN

SCALE: N.T.S.

ISSUANCES

DATE	Description

KEY PLAN

AH&P
CONSULTING ENGINEERS
ANDREWS, HAMBROOK & POWELL, INC.
250 Charter Lane
Suite 100
Macon, Georgia 31210
Macon, GA 31210
Fax: (478) 405-8210
WWW.AHPENGINEERS.COM



Manley Spangler Smith Architects
A Professional Corporation

625 East Taylor St
P.O. Box 880
Griffin, Georgia 30224
Office: 770.227.5473
Fax: 770.228.3442

PROJECT:
HENRY COUNTY SCHOOLS - DISTRIBUTION CENTER

CLIENT:
HENRY COUNTY BOARD OF EDUCATION

SHEET TITLE:
PLUMBING WAREHOUSE CHECK-IN AREA FLOOR PLAN

PROJECT NUMBER: 201827
DATE: 08.13.20
SCALE: AS SHOWN
DRAWN BY: JMC
CHECKED BY: JMC

SHEET NO.: P1.32