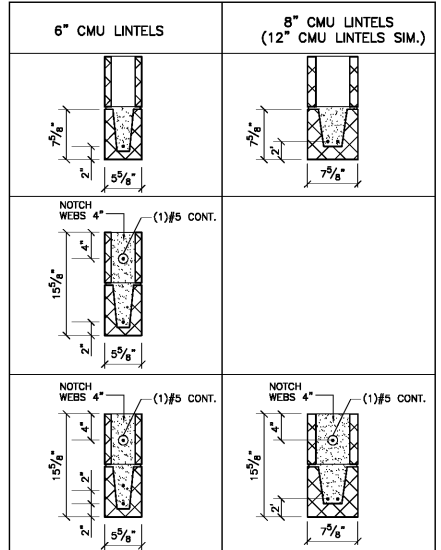


**MASONRY WALL LINTEL SCHEDULE**

OPENING WIDTH	MIN.	MAX.	STEEL LINTELS FOR EACH 4" WALL THICKNESS	MASONRY LINTELS LINTEL DEPTH AND REINFORCING **				
				DEPTH	4" WALL	6" WALL	8" WALL	12" WALL
2'-0"	2'-0"	3'-0"	L6x3 1/2 x 3/16 S.L.V.	7 7/8"	(1) #4	(1) #4 BOTT.	(2) #5 BOTT.	(2) #5 BOTT.
3'-0"	3'-0"	4'-0"	L6x3 1/2 x 3/16 S.L.V.	7 7/8"	(1) #4	(1) #4 BOTT.	(2) #5 BOTT.	(2) #5 BOTT.
4'-0"	4'-0"	5'-0"	L6x4 1/2 x 3/16 S.L.V.	7 7/8"	(1) #4	(1) #5 BOTT.	(2) #5 BOTT.	(2) #5 BOTT.
5'-0"	5'-0"	6'-0"	L6x4 1/2 x 3/16 S.L.V.	7 7/8"	(1) #4	(1) #5 BOTT.	(2) #5 BOTT.	(2) #5 BOTT.
6'-0"	6'-0"	7'-0"	L6x4 1/2 x 3/16 S.L.V.	7 7/8"	(1) #5 BOTT.	(2) #5 BOTT.	(2) #6 BOTT.	(2) #6 BOTT.
7'-0"	7'-0"	8'-0"	L6x4 1/2 x 3/16 S.L.V.	7 7/8"	(1) #5 BOTT.	(2) #5 BOTT.	(2) #6 BOTT.	(2) #6 BOTT.
8'-0"	8'-0"	9'-0"	L6x4 1/2 x 3/16 S.L.V.	15 1/8"	(2) #5 BOTT.	(2) #5 BOTT.	(2) #6 BOTT.	(2) #6 BOTT.
9'-0"	9'-0"	10'-0"	L6x4 1/2 x 3/16 S.L.V.	15 1/8"	(2) #5 BOTT.	(2) #5 BOTT.	(2) #6 BOTT.	(2) #6 BOTT.
10'-0"	10'-0"	11'-0"	L6x4 1/2 x 3/16 S.L.V.	15 1/8"	(2) #5 BOTT.	(2) #5 BOTT.	(2) #6 BOTT.	(2) #6 BOTT.
11'-0"	11'-0"	12'-0"	L6x4 1/2 x 3/16 S.L.V.	15 1/8"	(2) #5 BOTT.	(2) #5 BOTT.	(2) #6 BOTT.	(2) #6 BOTT.
12'-0"	12'-0"	13'-0"	L6x4 1/2 x 3/16 S.L.V.	15 1/8"	(2) #5 BOTT.	(2) #5 BOTT.	(2) #6 BOTT.	(2) #6 BOTT.
13'-0"	13'-0"	14'-0"	L6x4 1/2 x 3/16 S.L.V.	15 1/8"	(2) #5 BOTT.	(2) #5 BOTT.	(2) #6 BOTT.	(2) #6 BOTT.

\* 8" BEARING EACH END FOR STEEL \*\* 8" BEARING EACH END FOR U-BLOCK  
 NOTES:  
 1. USE EITHER STEEL LINTEL OR MASONRY LINTEL (SEE ARCH. HEAD DETAILS)  
 2. THIS SCHEDULE TO BE USED UNLESS NOTED OTHERWISE  
 3. DO NOT USE THIS SCHEDULE IF CONCENTRATED LOAD IS APPLIED TO LINTEL  
 4. DO NOT USE THIS SCHEDULE IF HEIGHT OF MASONRY ABOVE OPENING IS LESS THAN HALF OF THE OPENING WIDTH

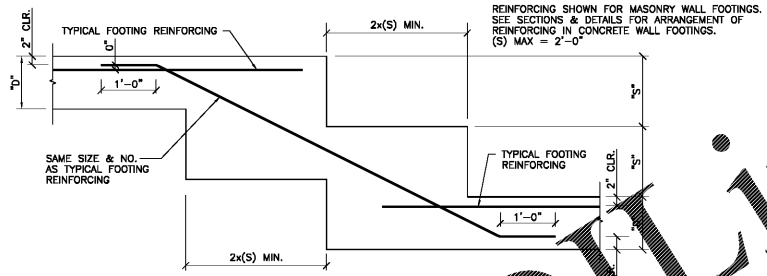
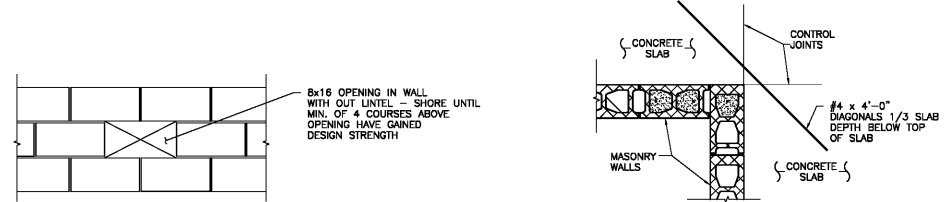
**1 MASONRY WALL LINTEL SCHEDULE**  
 S2.3 SCALE: NONE



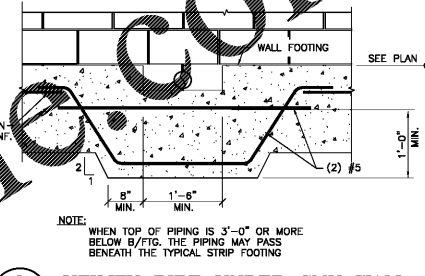
**2 MASONRY WALL LINTEL SCHEDULE**  
 S2.3 SCALE: NONE

**3 WALL OPENING**  
 S2.3 SCALE: NONE SEE LINTEL SCHEDULE FOR LARGER OPENINGS

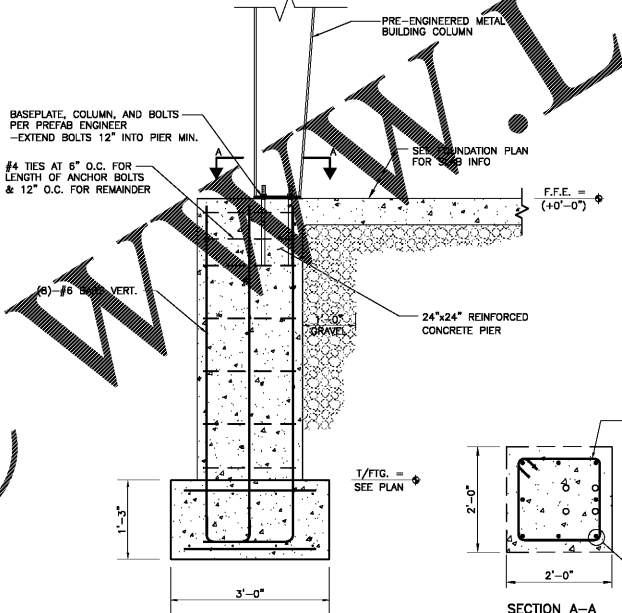
**4 TYP. REINF. @ CORNER CMU**  
 S4.2 SCALE: NONE SLAB ON GRADE



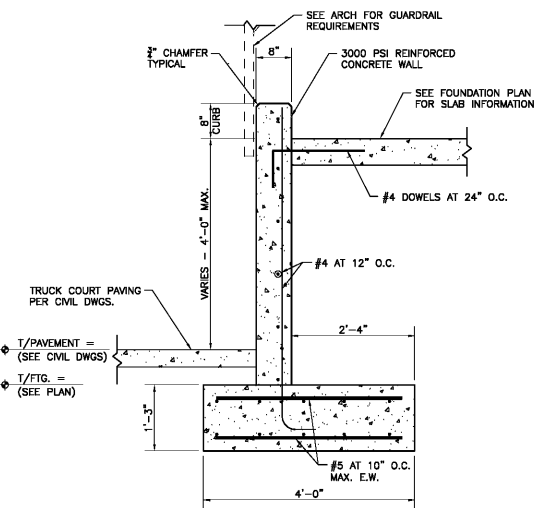
**5 TYPICAL STEPPED FOOTING DETAIL**  
 S2.3 SCALE: NONE



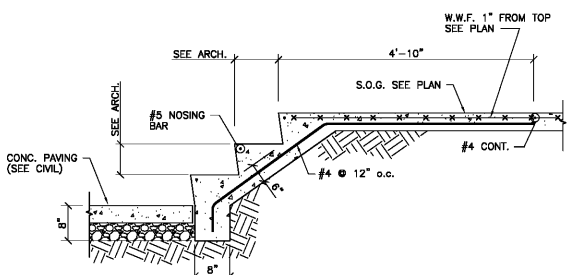
**6 UTILITY PIPE UNDER CMU WALL**  
 S2.3 SCALE: NONE



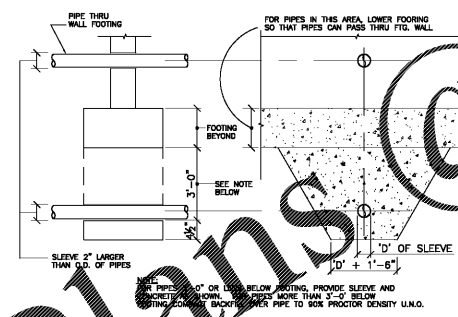
**9 SECTION AT PREFAB COLUMN ALONG LOADING DOCK**  
 S2.3 SCALE: 3/4"=1'-0"



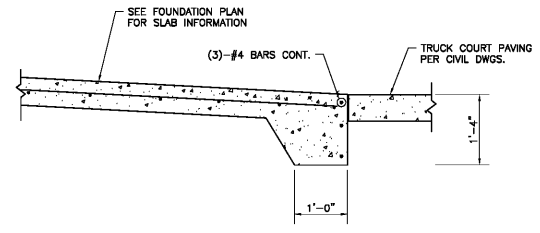
**10 EXTERIOR DOCK RAMP WALL**  
 S2.3 SCALE: 3/4"=1'-0"



**7 TYP. CONC. STAIRS ON GRADE**  
 S2.3 SCALE: NONE



**8 EXCAVATION PERP. TO WALL FTG.**  
 S2.3 SCALE: NONE



**11 END OF DRIVE-IN RAMP**  
 S2.3 SCALE: 3/4"=1'-0"

REVISIONS  
 NO. DATE DESCRIPTION

---

**HAINES, GIPSON & ASSOCIATES**  
 Consulting Engineers  
 SITE 100  
 100 NORTH BROWN ROAD  
 LAWRENCEVILLE, GEORGIA 30042  
 770.461.7800 FAX 461.7700

**REGISTERED PROFESSIONAL ENGINEER**  
 GEORGIA  
 WALL W. GIPSON

**REGISTERED ARCHITECT**  
 GEORGIA  
 MANLEY SPANGLER SMITH ARCHITECTS

**Manley Spangler Smith Architects**  
 A Professional Corporation  
 525 East Taylor St.  
 P. O. Box 680  
 Griffin, Georgia 30224  
 Tel (770) 227-5473  
 Fax (770) 228-6157

PROJECT:  
 HENRY COUNTY SCHOOLS - DISTRIBUTION CENTER

CLIENT:  
 HENRY COUNTY BOARD OF EDUCATION

SHEET TITLE:  
 SECTIONS & DETAILS

© 2020 Manley Spangler Smith Architects, PC  
 PROJECT NUMBER: 201627  
 DATE: 08.13.20  
 SCALE: AS NOTED  
 DRAWN BY: DSG  
 CHECKED BY: RWG

SHEET NO.:  
 S2.3

Order Plans @ WWW.LDLine.com