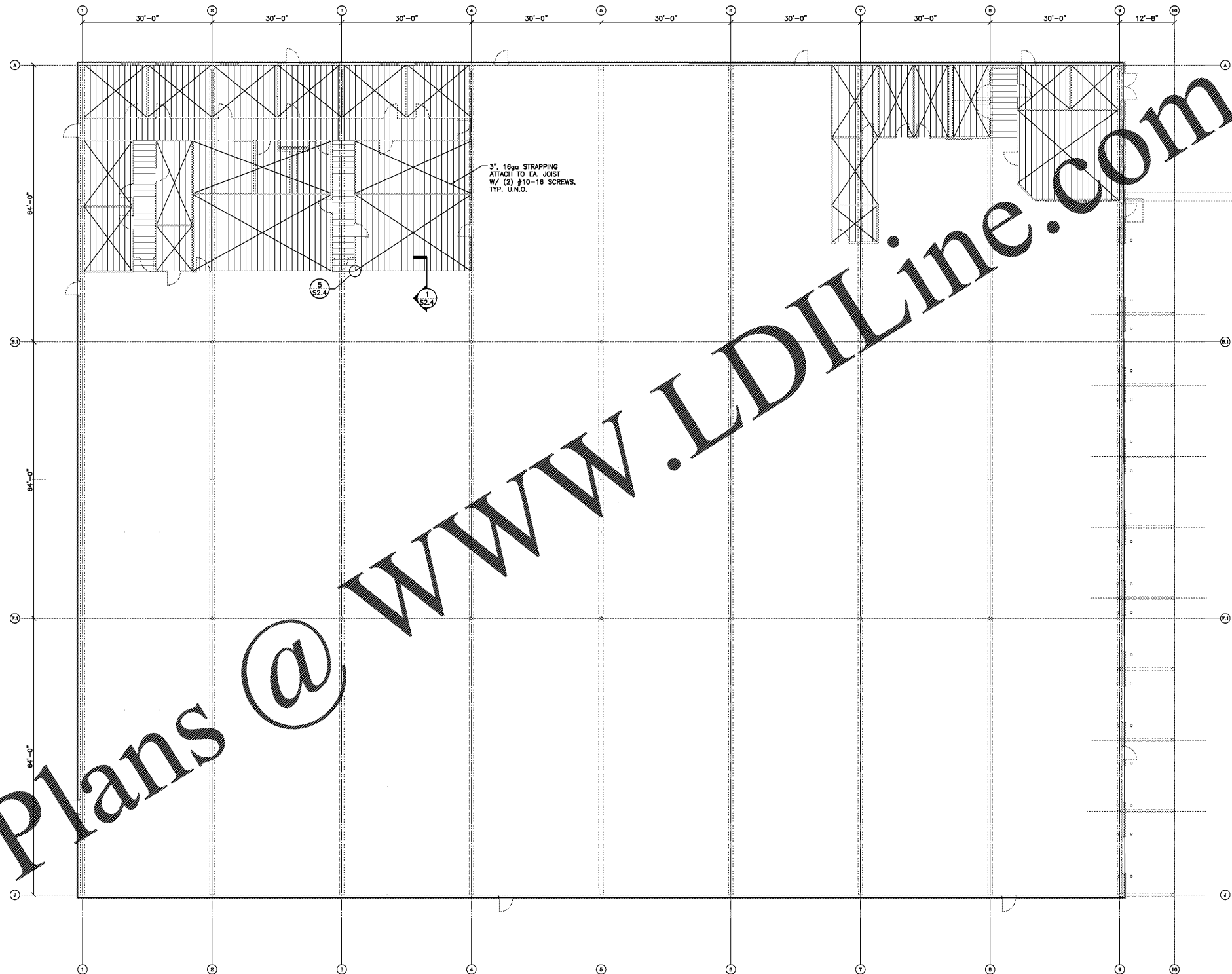


Order Plans @ WWW.LDILine.com



1 CEILING FRAMING PLAN
S1.2 SCALE: 3/32" = 1'-0"

- FRAMING NOTES:**
1. CEILING FRAMING TO BE 10", 18 ga. METAL STUD FRAMING AT 18" O.C. (100S200-43) WITH BRIDGING AT 8'-0" O.C., TYP. U.N.O. SEE S2.4 FOR DETAILS.
 2. REFER TO ARCHITECTURAL DRAWINGS FOR CEILING ATTACHMENT DETAILS.
 3. REFER TO ARCHITECTURAL DRAWINGS FOR ADDITIONAL DIMENSIONS, DETAILS, AND INFORMATION NOT GIVEN ON THIS DRAWING.
 4. THE CONTRACTOR SHALL REFER TO THE PLUMBING, MECHANICAL, AND ELECTRICAL DRAWINGS AND NOTE THE LOCATION OF ALL PIPING AND CONDUITS. CONTRACTOR SHALL COORDINATE THE INSULATION OF ALL COLD-FORMED FRAMING WITH THE INSTALLATION OF ALL PLUMBING, MECHANICAL, AND ELECTRICAL.

REVISIONS	
NO.	DESCRIPTION

HAINES, GIPSON & ASSOCIATES
 Consulting Engineers
 SITE 100
 100 NORTH BROWN ROAD
 LAWRENCEVILLE, GEORGIA 30041
 770.461.7800 FAX 461.7780

Manley Spangler Smith Architects
 A Professional Corporation

525 East Taylor St.
 P. O. Box 680
 Griffin, Georgia 30224
 Tel (770) 227-5473
 Fax (770) 228-6157

PROJECT:
 HENRY COUNTY SCHOOLS - DISTRIBUTION CENTER

CLIENT:
 HENRY COUNTY BOARD OF EDUCATION

SHEET TITLE:
 CEILING FRAMING PLAN

© 2020 Manley Spangler Smith Architects, PC
 PROJECT NUMBER: 201627
 DATE: 08.13.20
 SCALE: AS NOTED
 DRAWN BY: DSG
 CHECKED BY: RWG

SHEET NO.: **S1.2**