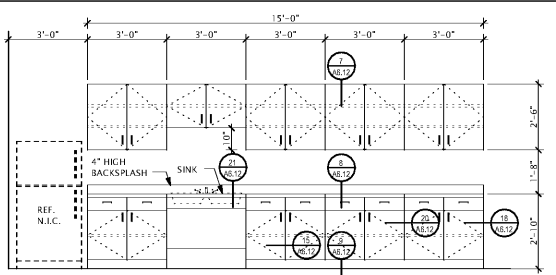
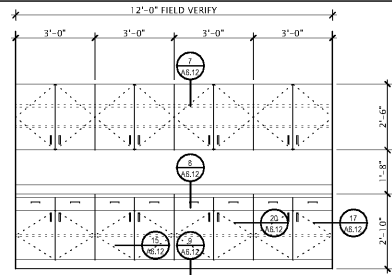


MILLWORK GENERAL NOTES:

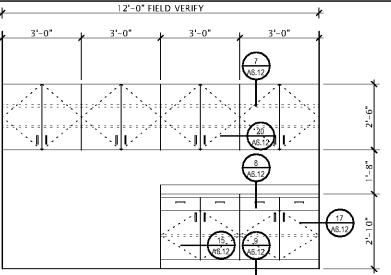
- FIELD VERIFY ALL CABINET & SHELF DIMENSIONS THAT MUST OCCUPY FIXED CONDITIONS.
- CONTRACTOR SHALL BE RESPONSIBLE FOR FABRICATING MILLWORK SECTIONALLY TO ALLOW ENTRY INTO ROOMS.
- PROVIDE WOOD CLOSURES AT ALL INTERIOR CORNERS AT TOPS OF CABINETS AND SHELVES.
- REFER TO SPECIFICATIONS FOR WOOD SPECIES, FINISHES AND COVERINGS FOR ALL DOORS, SHELVES, DIVIDERS, DRAWERS AND CABINETS.
- MILLWORK SHALL BE CONSTRUCTED IN ACCORDANCE WITH A.W.I. REVEAL OVERLAY SPEC.
- PROVIDE CIRCULAR CUT-OUTS IN BACKS OF ALL CABINETS AND SHELVES WHERE WALL CLEANOUTS ARE LOCATED. REFER TO PLUMBING DRAWINGS FOR ALL LOCATIONS.
- CABINET FACES SHALL COMPLY WITH A.W.I. QUALITY STANDARDS 6TH EDITION VER. 1.1 1994 SEC. 400A-5-1 FIG. 400-08 - CUSTOM GRADE.
- PROVIDE BLOCKING AS REQUIRED TO SUPPORT MILLWORK, CASEWORK, TOILET ACCESSORIES AND OTHER WALL MOUNTED FEATURES.
- MAX. FILLER/SCRIBE - 2" EA. SIDE
- COORDINATE MILLWORK DIMENSIONS WITH ALL EQUIPMENT NOTED AS N.I.C. PRIOR TO FABRICATION.
- REFER TO FLOORPLANS FOR MILLWORK TYPE ELEVATION SYMBOLS THAT SHALL REQUIRE OPPOSITE HAND TO ELEVATION DETAILED. OPPOSITE HAND MILLWORK IT DENOTED AS "O.H."



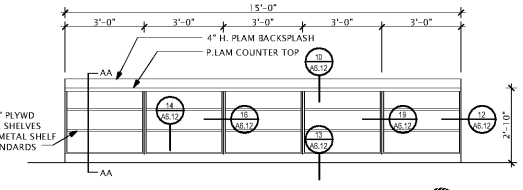
1 ELEVATION
SCALE: 3/8" = 1'-0"



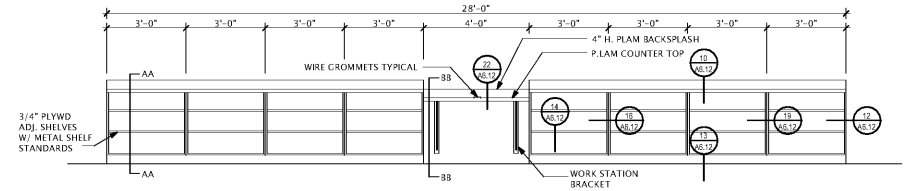
2 ELEVATION
SCALE: 3/8" = 1'-0"



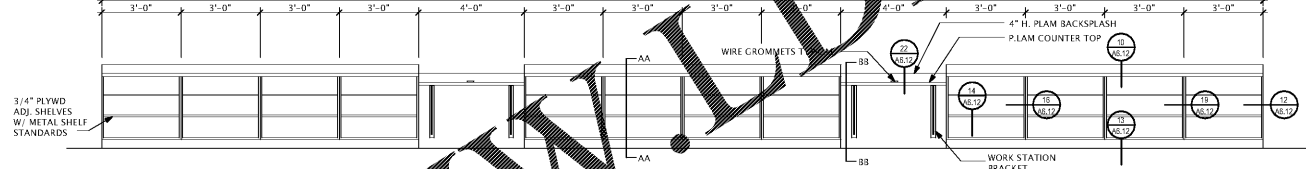
3 ELEVATION
SCALE: 3/8" = 1'-0"



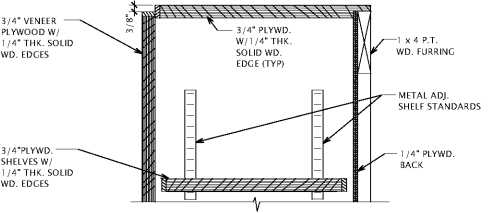
4 ELEVATION
SCALE: 3/8" = 1'-0"



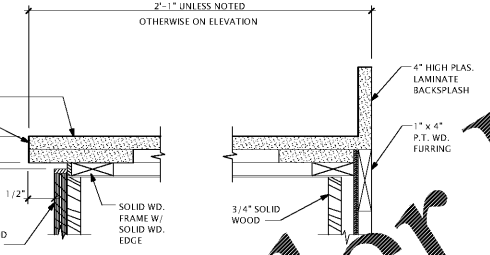
5 ELEVATION
SCALE: 3/8" = 1'-0"



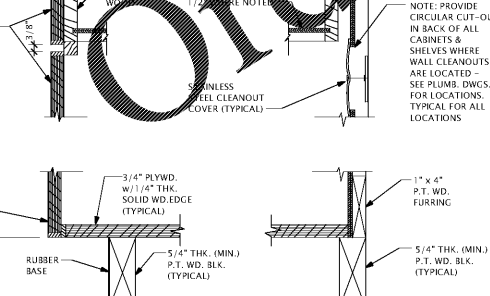
6 ELEVATION
SCALE: 3/8" = 1'-0"



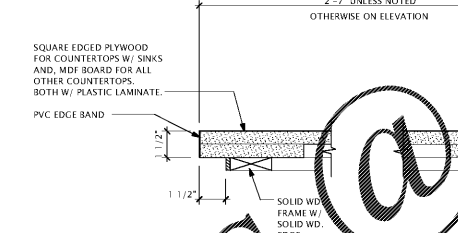
7 DETAIL
SCALE: 3" = 1'-0"



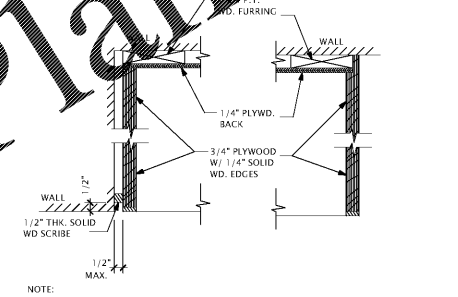
8 DETAIL
SCALE: 3" = 1'-0"



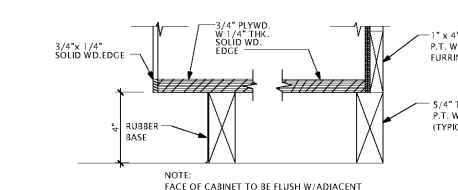
9 DETAIL
SCALE: 3" = 1'-0"



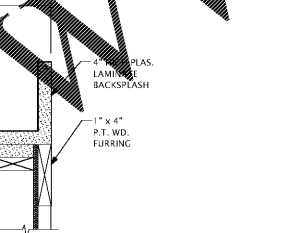
10 DETAIL
SCALE: 3" = 1'-0"



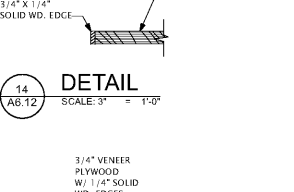
11 DETAIL
SCALE: 3" = 1'-0"



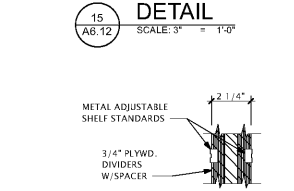
12 DETAIL
SCALE: 3" = 1'-0"



13 DETAIL
SCALE: 3" = 1'-0"



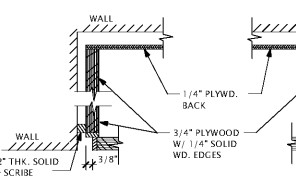
14 DETAIL
SCALE: 3" = 1'-0"



15 DETAIL
SCALE: 3" = 1'-0"



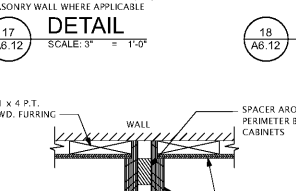
16 DETAIL
SCALE: 3" = 1'-0"



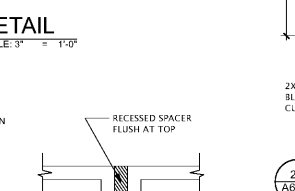
17 DETAIL
SCALE: 3" = 1'-0"



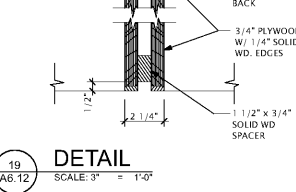
18 DETAIL
SCALE: 3" = 1'-0"



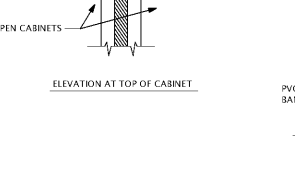
19 DETAIL
SCALE: 3" = 1'-0"



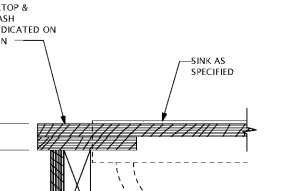
20 DETAIL
SCALE: 3" = 1'-0"



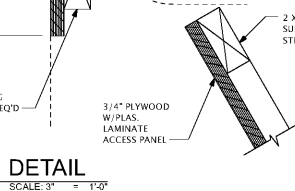
21 DETAIL
SCALE: 3" = 1'-0"



22 DETAIL
SCALE: 3" = 1'-0"



23 DETAIL
SCALE: 3" = 1'-0"



24 DETAIL
SCALE: 1 1/2" = 1'-0"

REVISIONS/ISSUANCES		
NO.	DATE	DESCRIPTION



Manley Spangler Smith Architects
A Professional Corporation

525 East Taylor St.
P.O. Box 880
Golf Springs, Georgia 30224
Office 770 227 5473
Fax 770 228 3442

PROJECT:
HENRY COUNTY SCHOOLS - DISTRIBUTION CENTER

CLIENT:
HENRY COUNTY BOARD OF EDUCATION

SHEET TITLE:
MILLWORK ELEVATIONS & DETAILS

© 2020 Manley Spangler Smith Architects, PC
PROJECT NUMBER: 201827
DATE: 08.13.20
SCALE: AS NOTED
DRAWN BY: JS, LT
CHECKED BY: RV

SHEET NO.: **A6.12**