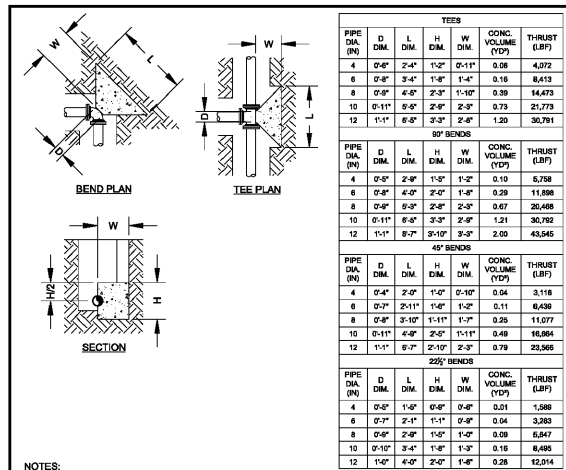
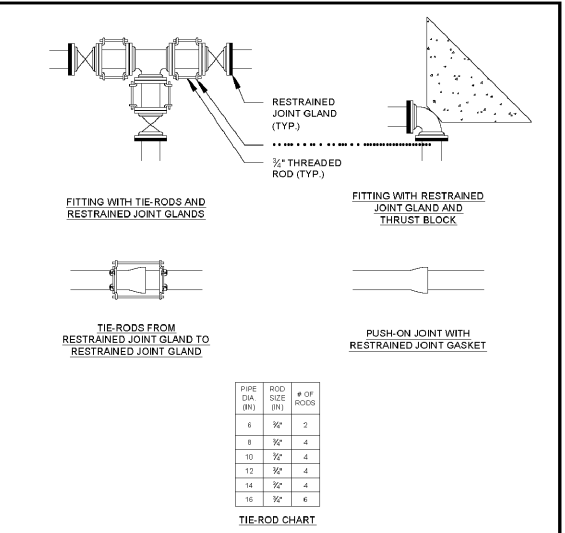


CITY OF MCDOONOUGH
 REVISION: 07/02/2016
 SCALE: N.T.S.
 DETAIL NO. W17



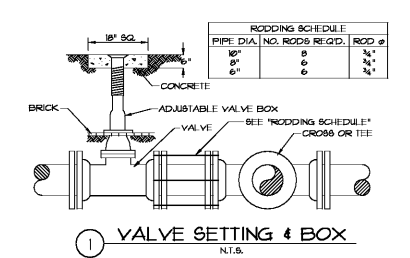
NOTES:
 1. THRUST BLOCK DIMENSIONS ARE BASED ON THE FOLLOWING DESIGN CRITERIA:
 WORKING PRESSURE = 150 PSI
 SOIL BEARING CAPACITY = 1,500 PSF
 SAFETY FACTOR = 1.5
 THESE ARE THE MINIMUM DESIGN CRITERIA. IF ACTUAL WORKING PRESSURE IS GREATER THAN 150 PSI OR IF ACTUAL SOIL BEARING CAPACITY IS LESS THAN 1,500 PSF, DIMENSIONS SHALL BE RECALCULATED.
 2. THRUST BLOCK CONCRETE SHALL HAVE A MINIMUM 28 DAY COMPRESSIVE STRENGTH OF 2,500 PSI.
 3. THRUST BLOCK SHALL BEAR AGAINST UNDISTURBED SOIL.
 4. A MINIMUM 10 MIL PLASTIC SHEET SHALL BE PLACED BETWEEN CONCRETE AND PIPE.
 5. ALL BOLTS SHALL REMAIN ACCESSIBLE. DO NOT COVER WITH CONCRETE.

HENRY COUNTY WATER & SEWERAGE AUTHORITY
 REVISION: 01/01/2012
 SCALE: N.T.S.
 DETAIL NO. S24

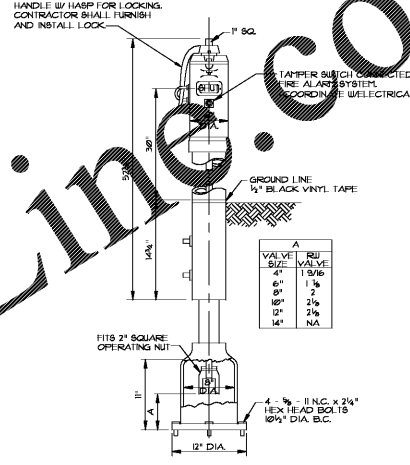


NOTES:
 1. RESTRAINED JOINT LENGTHS SHALL BE CALCULATED BY THE DESIGN ENGINEER. CALCULATIONS SHALL BE SUBMITTED TO HCWSA.
 2. THREADED ROD SHALL BE MINIMUM TYPE 304 STAINLESS STEEL AND SHALL HAVE A MINIMUM YIELD STRENGTH OF 50,000 PSI.

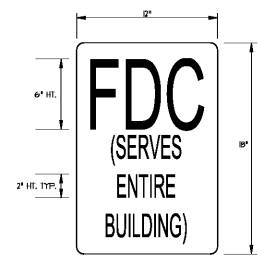
HENRY COUNTY WATER & SEWERAGE AUTHORITY
 REVISION: 01/01/2012
 SCALE: N.T.S.
 DETAIL NO. S26



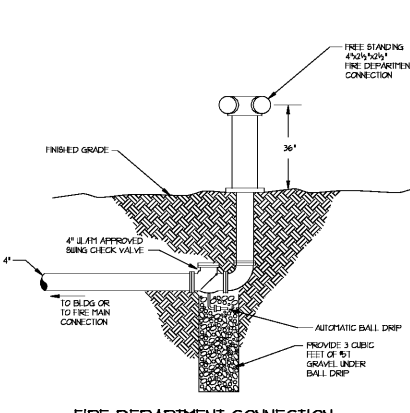
VALVE SETTING 4 BOX
 N.T.S.



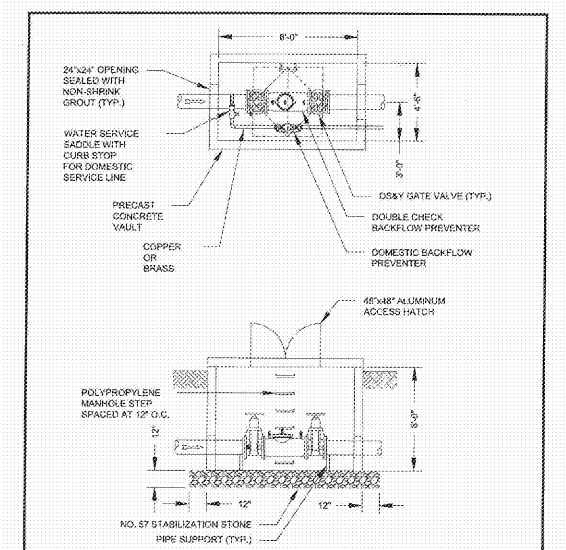
POST INDICATOR VALVE
 N.T.S.



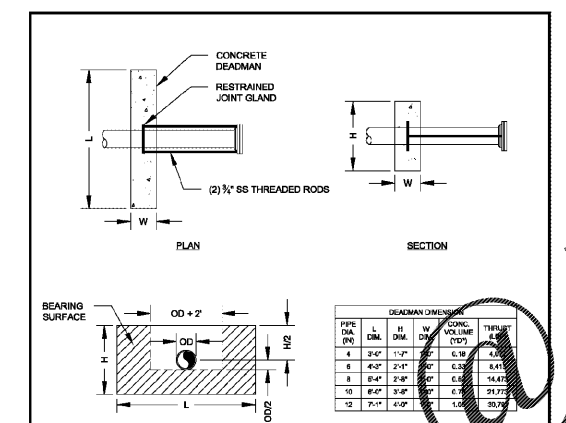
FIRE SIGNAGE
 N.T.S.



FIRE DEPARTMENT CONNECTION
 N.T.S.

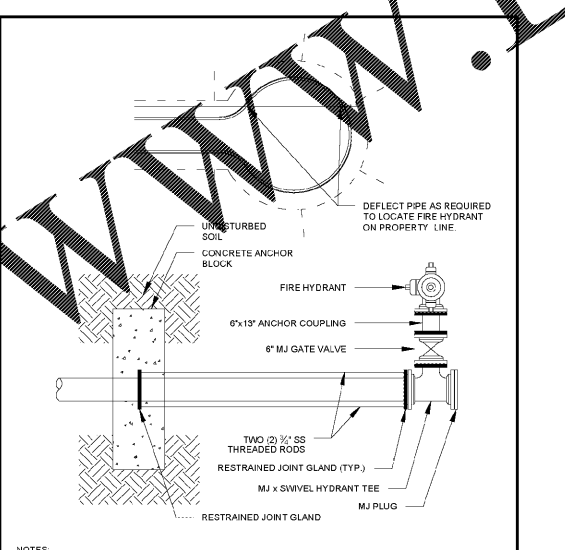


HENRY COUNTY WATER & SEWERAGE AUTHORITY
 REVISION: 01/01/2012
 SCALE: N.T.S.
 DETAIL NO. W19



NOTES:
 1. DEADMAN DIMENSIONS ARE BASED ON THE FOLLOWING DESIGN CRITERIA:
 WORKING PRESSURE = 150 PSI
 SOIL BEARING CAPACITY = 1,500 PSF
 SAFETY FACTOR = 1.5
 THESE ARE THE MINIMUM DESIGN CRITERIA. IF ACTUAL WORKING PRESSURE IS GREATER THAN 150 PSI OR IF ACTUAL SOIL BEARING CAPACITY IS LESS THAN 1,500 PSF, DIMENSIONS SHALL BE RECALCULATED.
 2. DEADMAN CONCRETE SHALL HAVE A MINIMUM 28 DAY COMPRESSIVE STRENGTH OF 2,500 PSI.
 3. DEADMAN SHALL BEAR AGAINST UNDISTURBED SOIL.
 4. A MINIMUM 10 MIL PLASTIC SHEET SHALL BE PLACED BETWEEN CONCRETE AND PIPE.
 5. ALL BOLTS SHALL REMAIN ACCESSIBLE. DO NOT COVER WITH CONCRETE.

HENRY COUNTY WATER & SEWERAGE AUTHORITY
 REVISION: 01/01/2012
 SCALE: N.T.S.
 DETAIL NO. S25



NOTES:
 1. ALL FITTINGS AND VALVES AND THE FIRST 4 JOINTS OF PIPE FROM THE FIRE HYDRANT SHALL BE RESTRAINED.

HENRY COUNTY WATER & SEWERAGE AUTHORITY
 REVISION: 01/01/2012
 SCALE: N.T.S.
 DETAIL NO. W05

REVISIONS/ISSUANCES
 NO. DATE DESCRIPTION

KEYPLAN

GEORGIA PROFESSIONAL CORPORATION
 State of Georgia
 Call before you dig

CARTER Engineering Group
 6310 Pender Road, Suite 200
 Marietta, GA 30159
 (478) 219-2500

STATE OF GEORGIA
 REGISTERED PROFESSIONAL ENGINEER
 DESIGN PROFESSIONAL #2061
 ISSUED: 11/22/2017 EXPIRES: 11/22/2022

STATE OF GEORGIA
 REGISTERED ARCHITECT
 MANLEY SPANGLER SMITH ARCHITECTS
 A Professional Corporation

525 East Taylor St.
 P.O. Box 880
 Griffin, Georgia 30224
 Office: 770.227.5473
 Fax: 770.228.3462

PROJECT:
 HENRY COUNTY SCHOOLS
 DISTRIBUTION CENTER

CLIENT:
 HENRY COUNTY BOARD
 OF EDUCATION

SHEET TITLE:
 SITE WATER DETAILS

© 2020 Manley Spangler Smith Architects, PC
 PROJECT NUMBER: 201827
 DATE: 08.13.20
 SCALE: AS SHOWN
 DRAWN BY: BCS
 CHECKED BY: DLC

SHEET NO.: C7.3

Order

WWW.LDILine.com