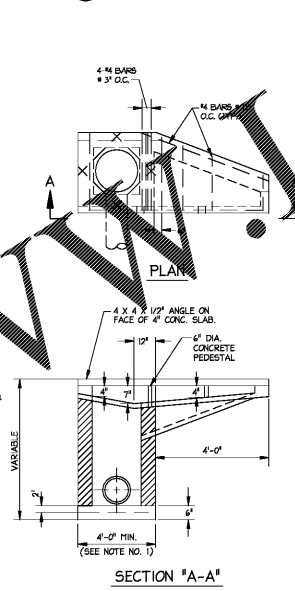
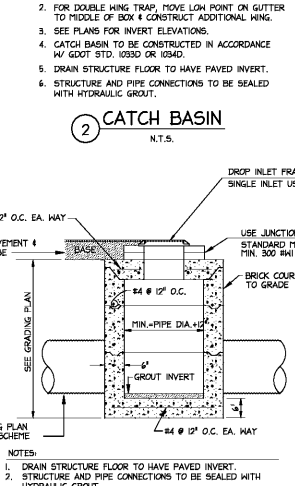


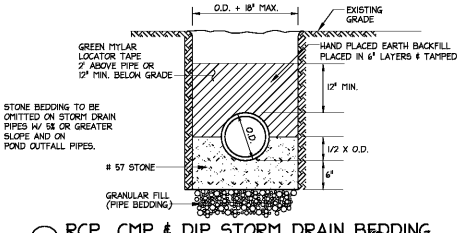
1 AREA DRAIN
N.T.S.



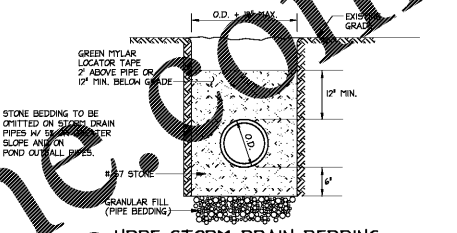
2 CATCH BASIN
N.T.S.



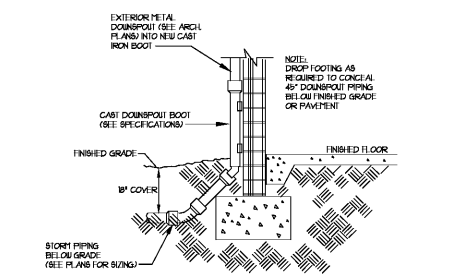
3 DROP INLET / JUNCTION BOX
N.T.S.



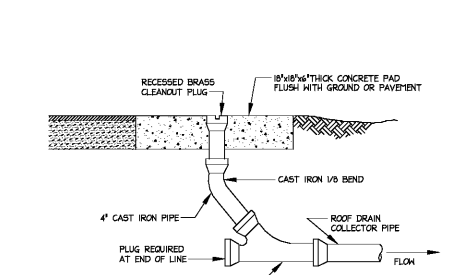
4 RCP, CMP & DIP STORM DRAIN BEDDING
N.T.S.



5 HDPE STORM DRAIN BEDDING
N.T.S.



6 DOWNSPOUT BOOT
N.T.S.



7 STORM SEWER CLEANOUT TO GRADE
N.T.S.

Order Plans @ www.wldilines.com

REVISIONS/ISSUANCES	
NO.	DESCRIPTION

Keyplan

Level Licensed Design Professional # 2001
 ISSUED: 11/2/2017 EXPIRES: 11/2/2022

Manley Spangler Smith Architects
 A Professional Corporation

525 East Taylor St.
 P.O. Box 880
 Griffin, Georgia 30224
 Office: 770.227.5473
 Fax: 770.228.3442

PROJECT:
HENRY COUNTY SCHOOLS DISTRIBUTION CENTER

CLIENT:
 HENRY COUNTY BOARD OF EDUCATION

SHEET TITLE:
 MISCELLANEOUS SITE DETAILS

© 2020 Manley Spangler Smith Architects, PC
 PROJECT NUMBER: 201827
 DATE: 08.13.20
 SCALE: AS SHOWN
 DRAWN BY: BCS
 CHECKED BY: DLC

SHEET NO.: **C7.2**