

REVISIONS/ISSUANCES	
NO.	DESCRIPTION



KEYPLAN



6310 Peach Road, Suite 200
Macon, GA 31210
(478) 219-2500



LEAD LICENSED
DESIGN PROFESSIONAL #2051
ISSUED: 11/2017 EXPIRES: 11/2022



Manley Spangler Smith Architects
A Professional Corporation

525 East Taylor St.
P.O. Box 880
Coffey, Georgia 30224
Office: 770.227.5473
Fax: 770.228.3442

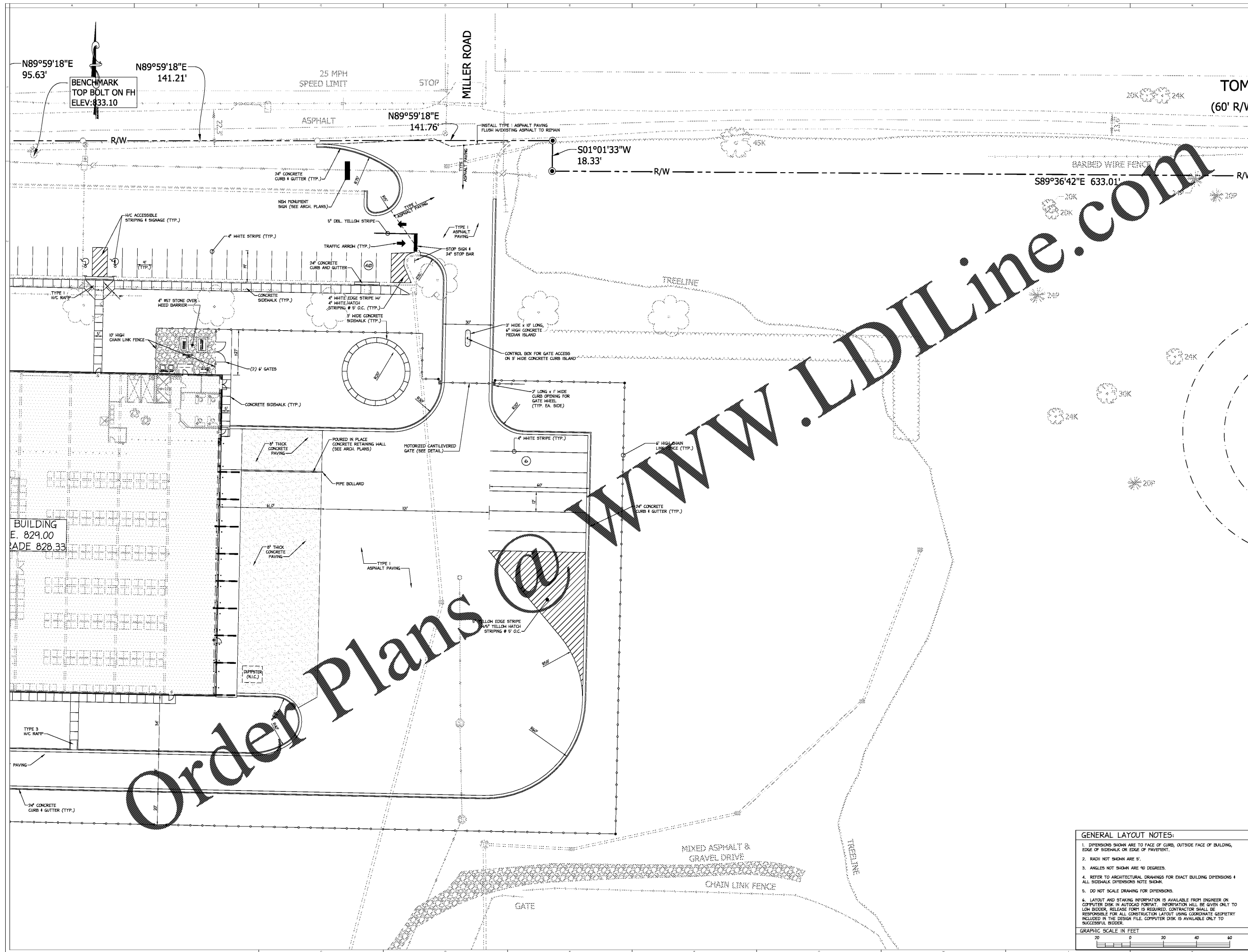
PROJECT:
**HENRY COUNTY SCHOOLS
DISTRIBUTION CENTER**

CLIENT:
HENRY COUNTY BOARD
OF EDUCATION

SHEET TITLE:
SITE LAYOUT AND
PAVING PLAN
SECTOR 2

© 2020 Manley Spangler Smith Architects, PC
PROJECT NUMBER: 201627
DATE: 08.13.20
SCALE: 1" = 20'
DRAWN BY: BCS
CHECKED BY: D.L.C.

SHEET NO.:
C3.2



Order Plans @ www.LDILine.com

- GENERAL LAYOUT NOTES:**
1. DIMENSIONS SHOWN ARE TO FACE OF CURB, OUTSIDE FACE OF BUILDING, EDGE OF SIDEWALK OR EDGE OF PAVEMENT.
 2. RADI NOT SHOWN ARE 5'.
 3. ANGLES NOT SHOWN ARE 90 DEGREES.
 4. REFER TO ARCHITECTURAL DRAWINGS FOR EXACT BUILDING DIMENSIONS & ALL SIDEWALK DIMENSIONS NOTE SHOWN.
 5. DO NOT SCALE DRAWING FOR DIMENSIONS.
 6. LAYOUT AND STAKING INFORMATION IS AVAILABLE FROM ENGINEER ON COMPUTER DISK IN AUTOCAD FORMAT. INFORMATION WILL BE GIVEN ONLY TO LOW BIDDER. RELEASE FORM IS REQUIRED. CONTRACTOR SHALL BE RESPONSIBLE FOR ALL CONSTRUCTION LAYOUT USING COORDINATE GEOMETRY INCLUDED IN THE DESIGN FILE. COMPUTER DISK IS AVAILABLE ONLY TO SUCCESSFUL BIDDER.
- GRAPHIC SCALE IN FEET
-