

Order Plans @ WWW.LDILine.com

SEAL

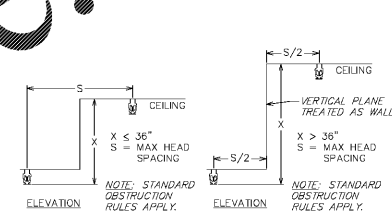
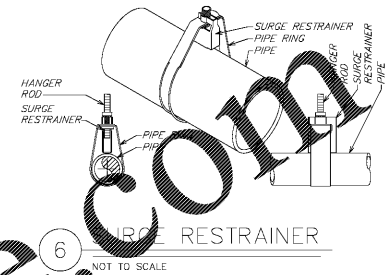
ARCHITECTURAL PROJECT NO.: 80-792  
 MEP PROJECT NO.: 200183  
 STRUCTURAL PROJECT NO.: ---  
 CIVIL PROJECT NO.: ---

CENTER NO.: 0531 SITE ID NO.: LX779947 PROGRAM: RTSZ

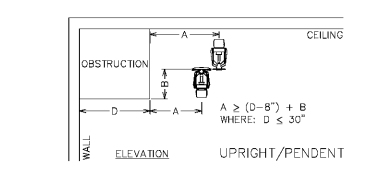
**STIPULATION FOR REUSE**  
 THIS DRAWING WAS PREPARED FOR USE ON A SPECIFIC SITE "JOHNSON CITY, TN 37601"  
 CONTRACT NUMBER: 08/07/2020  
 AND IT IS NOT SUITABLE FOR USE ON A DIFFERENT PROJECT OR ANOTHER PROJECT WITHOUT THE WRITTEN PERMISSION OF THE ARCHITECT OR ENGINEER. REPRODUCTION OF THIS DRAWING FOR REUSE ON ANOTHER PROJECT IS NOT AUTHORIZED WITHOUT THE WRITTEN PERMISSION OF THE ARCHITECT OR ENGINEER. THE PROPERTY OF FEDEx OFFICE INC. AND SHALL NOT BE REPRODUCED IN ANY MANNER OR USED IN ANY OTHER WORK WITHOUT THE WRITTEN AGREEMENT WITH FEDEx OFFICE. WRITTEN DIMENSIONS TAKE PRECEDENCE OVER SCALED DIMENSIONS AND SHALL BE ON THE JOB SITE. FEDEx OFFICE IS TO BE NOTIFIED IN WRITING OF ANY DISCREPANCIES PRIOR TO THE COMMENCEMENT OF ANY WORK. THESE DRAWINGS ARE INTENDED FOR DESIGN ONLY AND NOT FOR USE IN CONSTRUCTION UNLESS APPROVED BY GOVERNING AUTHORITIES.

**PERMIT/ BID SET**  
 ? 2020 FedEx Office  
 NO. REVISIONS: DATE:  
 1  
 2  
 3  
 4  
 5  
 6  
 7  
 8  
 9  
 10  
 11  
 12  
 13  
 14  
 15  
 16  
 17  
 18  
 19  
 20  
 21  
 22  
 23  
 24  
 25  
 26  
 27  
 28  
 29  
 30  
 31  
 32  
 33  
 34  
 35

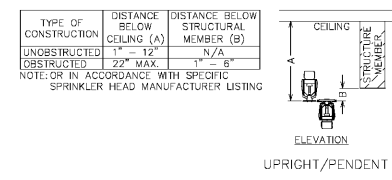
PERMIT SET ISSUE DATE: 08/07/2020  
 BID SET ISSUE DATE: 08/07/2020  
 CONSTRUCTION SET ISSUE DATE: ---  
 DRAWING TITLE:  
**FIRE PROTECTION SCHEDULES AND DETAILS**  
 DRAWING NUMBER:  
**FP-2.0**



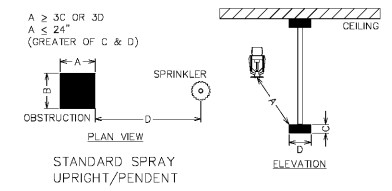
5 VERTICAL CEILING CHANGE RULE  
 NOT TO SCALE



4 SOFFIT OBSTRUCTION RULE  
 NOT TO SCALE



3 DEFLECTOR DISTANCE  
 NOT TO SCALE



2 OBSTRUCTION DISTANCE  
 NOT TO SCALE

DISTANCE FROM SPRINKLER TO SIDE OF OBSTRUCTION (A)	MAXIMUM DISTANCE TO OBSTRUCTION (IN) (B)
< 1'-0"	0
1'-0" < 1'-6"	2.5
1'-6" < 2'-0"	3.5
2'-0" < 2'-6"	5.5
2'-6" < 3'-0"	7.5
3'-0" < 3'-6"	9.5
3'-6" < 4'-0"	12
4'-0" < 4'-6"	14
4'-6" < 5'-0"	15.5
5'-0" < 5'-6"	18
5'-6" < 6'-0"	20
6'-0" < 6'-6"	24
6'-6" < 7'-0"	30
7'-0" < 7'-6"	35

1 OBSTRUCTION RULE  
 NOT TO SCALE

**SYMBOLS**

FIRE PROTECTION					
SYMBOL	DESCRIPTION	SYMBOL	DESCRIPTION	SYMBOL	DESCRIPTION
	ELEVATION CHANGE		BALL VALVE		FIRE PRINT
	PIPE COP		CHECK VALVE		VAL. IN RISE
	PPE COUPLING		PRESSURE REDUCING VALVE		GATE VALVE
	HYDRAULIC NOISE POINT		PRESS. RELIEF VALVE		SHUT-OFF VALVE
	FINISHED CEILING ELEVATION		RIBBED METAL GRD		SHUT-OFF VALVE

**SPRINKLER CABINET CONTENTS**

SIZE OF FACILITY	HEAD QTY	MIN. WRENCH SIZE	LIST OF SPRINKLERS INSTALLED	SPRINKLER ESCUTCHEONS PER TYPE
0-300 SPRINKLERS	6	1/2"	1	2
300-1,000 SPRINKLERS	12	1/2"	1	2
1,000+ SPRINKLERS	24	1/2"	1	2

SPRINKLERS SHALL BE KEPT WHERE TEMPERATURE DOES NOT EXCEED 100°F.

**MAXIMUM PROTECTION AREAS AND MAXIMUM SPACING FOR STANDARD SPRAY UPRIGHT & PENDENT HEADS**

CONSTRUCTION TYPE	SYSTEM TYPE	PROTECTION AREA (MAX SQ.FT.)	MAX SPACING	MAX DISTANCE TO WALL (FT)
<b>LIGHT HAZARD:</b>				
NONCOMBUSTIBLE UNOBSTRUCTED	PIPE SCHEDULE	200	15'-0"	7'-6"
UNOBSTRUCTED & COMBUSTIBLE UNOBSTRUCTED WITH MEMBERS 3FT OR MORE O.C.	HYD. CALC.	225	15'-0"	7'-6"
COMBUSTIBLE UNOBSTRUCTED WITH MEMBERS 3FT OR MORE O.C.	ALL	168	15'-0"	7'-6"
COMBUSTIBLE UNOBSTRUCTED & UNOBSTRUCTED WITH MEMBERS LESS THAN 3FT O.C.	ALL	130	15'-0"	7'-6"
COMBUSTIBLE CONCEALED SPACE UNDER A PITCHED ROOF HAVING COMBUSTIBLE WOOD JOIST OR WOOD TRUSS CONSTRUCTION WITH MEMBERS LESS THAN 3FT O.C. WITH SLOPES HAVING A PITCH OF 4:12 OR GREATER.	ALL	120	15'-0" PARALLEL TO SLOPE	7'-6" PARALLEL TO SLOPE
<b>ORDINARY HAZARD:</b>				
ALL	ALL	130	15'-0"	7'-6"
<b>EXTRA HAZARD:</b>				
ALL	PIPE SCHEDULE	90	12'-0"	6'-0"
	HYD. CALC.	100	12'-0"	6'-0"
	HYD. CALC. DENSITY = .25+	100	12'-0"	6'-0"
	HYD. CALC. DENSITY = .25	130	15'-0"	7'-6"

**HANGER LOCATIONS (MAX PRESSURE < 100 PSI)**

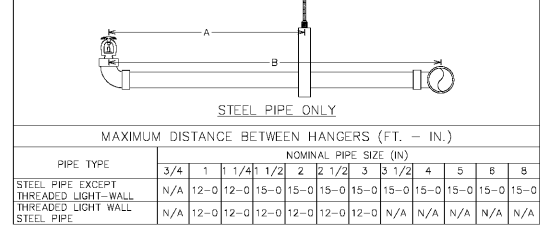
PIPE SIZE	A (MAX)	A (MIN)	B (MAX)
1"	36"	3"	24"
1 1/4"	48"	3"	24"
≥ 1 1/2"	60"	3"	24"

**HANGER ROD SIZES**

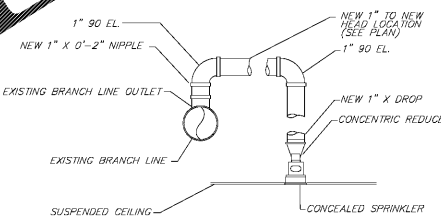
PIPE SIZE	DIAMETER
UP TO 4"	3/8"
5" TO 8"	1/2"
10" & 12"	5/8"

**HANGER LOCATIONS (MAX PRESSURE > 100 PSI)**

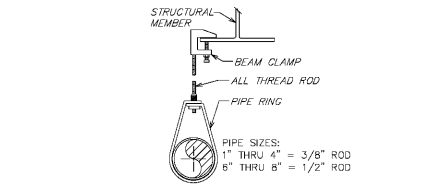
PIPE SIZE	A (MAX)	A (MIN)	B (MAX)
1"	12"	3"	12"
1 1/4"	12"	3"	12"
≥ 1 1/2"	12"	3"	12"



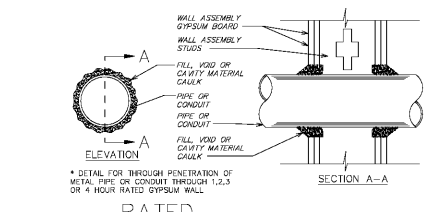
8 RATED PENETRATION DETAIL  
 NOT TO SCALE



10 ARMORER ASSEMBLY DETAIL  
 NOT TO SCALE



9 PIPE HANGER BEAM CLAMP  
 NOT TO SCALE



7 PIPE HANGER CONCRETE DECK  
 NOT TO SCALE