

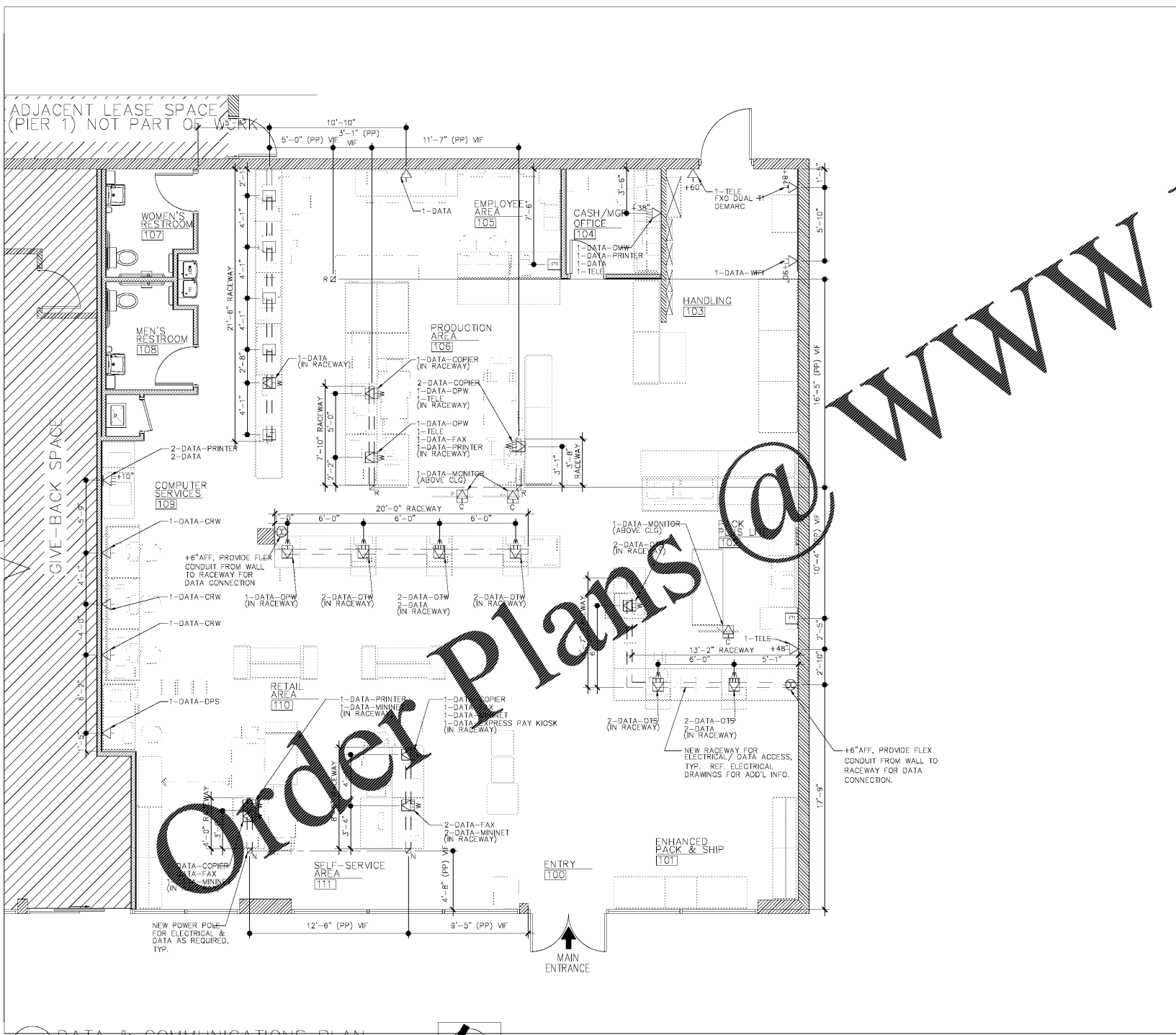
DATA & COMM PLAN – RESPONSIBILITY SCHEDULE (08/22/20) DATA COMMUNICATIONS LEGEND (Revised 03/19)

SYMBOL	DESCRIPTION	REVISIONS	COMMENTS
[Symbol]	SIMPLEX CABLE OUTLET-(1) LEVEL 5 CABLE, SINGLE SPACE FACEPLATE		
[Symbol]	DUPLEX CABLE OUTLET-(2)(2) LEVEL 5 CABLES, 4 SPACE		
[Symbol]	TRIPLEX CABLE OUTLET-(3) LEVEL 5 CABLES, 4 SPACE		
[Symbol]	FOURPLEX CABLE OUTLET-(4) LEVEL 5 CABLES, 4 SPACE		
[Symbol]	SIMPLEX CABLE OUTLET-(1) LEVEL 5 CABLE, SINGLE SPACE PLATE FIXTURE MOUNTED		
[Symbol]	DUPLEX CABLE OUTLET-(2) LEVEL 5 CABLES, 4 SPACE FIXTURE MOUNTED		
[Symbol]	TRIPLEX CABLE OUTLET-(3) LEVEL 5 CABLES, 4 SPACE FIXTURE MOUNTED		
[Symbol]	FOURPLEX CABLE OUTLET-(4) LEVEL 5 CABLES, 4 SPACE FIXTURE MOUNTED		
[Symbol]	SIMPLEX CABLE OUTLET-(1) LEVEL 5 CABLE, SINGLE SPACE PLATE W/FLUSH FLOOR COVERPLATE		
[Symbol]	DUPLEX CABLE OUTLET-(2) LEVEL 5 CABLES, 4 SPACE W/FLUSH FLOOR COVERPLATE		
[Symbol]	TRIPLEX CABLE OUTLET-(3) LEVEL 5 CABLES, 4 SPACE W/FLUSH FLOOR COVERPLATE		
[Symbol]	FOURPLEX CABLE OUTLET-(4) LEVEL 5 CABLES, 4 SPACE W/FLUSH FLOOR COVERPLATE		
[Symbol]	SIMPLEX CABLE OUTLET-(1) LEVEL 5 CABLE, 4 SPACE ON DATA AND ELEC RACEWAY		
[Symbol]	SIMPLEX CABLE OUTLET-(2) LEVEL 5 CABLE, 4 SPACE ON DATA AND ELEC RACEWAY		
[Symbol]	SIMPLEX CABLE OUTLET-(3) LEVEL 5 CABLE, 4 SPACE ON DATA AND ELEC RACEWAY		
[Symbol]	SIMPLEX CABLE OUTLET-(4) LEVEL 5 CABLE, 4 SPACE ON DATA AND ELEC RACEWAY		
[Symbol]	SIMPLEX CABLE OUTLET-(1) LEVEL 5 CABLE, LOCATE ABOVE CEILING, REFER A-5.3 FOR ADD'L INFO AND RESPONSIBILITIES		
[Symbol]	GENERAL ELECTRICAL NOTATIONS DESIGNATING PLACEMENT (AT ELECTRICAL-ONLY LOCATIONS), REFER ELECTRICAL DRAWING FOR EXACT REQUIREMENTS.		
[Symbol]	J-BOX FOR DATA CABLING		
[Symbol]	NEW POWER POLE		
[Symbol]	RELOCATED POWER POLE FROM INTERIM PLAN STORAGE		
[Symbol]	MOUNTING HEIGHT, MOUNT AT 18" AFF, UON		
[Symbol]	J-BOX		

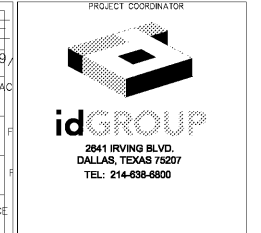
SYMBOL	DESCRIPTION
[Symbol]	SIMPLEX CABLE OUTLET-(1) LEVEL 5 CABLE, SINGLE SPACE FACEPLATE
[Symbol]	DUPLEX CABLE OUTLET-(2)(2) LEVEL 5 CABLES, 4 SPACE
[Symbol]	TRIPLEX CABLE OUTLET-(3) LEVEL 5 CABLES, 4 SPACE
[Symbol]	FOURPLEX CABLE OUTLET-(4) LEVEL 5 CABLES, 4 SPACE
[Symbol]	SIMPLEX CABLE OUTLET-(1) LEVEL 5 CABLE, SINGLE SPACE PLATE FIXTURE MOUNTED
[Symbol]	DUPLEX CABLE OUTLET-(2) LEVEL 5 CABLES, 4 SPACE FIXTURE MOUNTED
[Symbol]	TRIPLEX CABLE OUTLET-(3) LEVEL 5 CABLES, 4 SPACE FIXTURE MOUNTED
[Symbol]	FOURPLEX CABLE OUTLET-(4) LEVEL 5 CABLES, 4 SPACE FIXTURE MOUNTED
[Symbol]	SIMPLEX CABLE OUTLET-(1) LEVEL 5 CABLE, SINGLE SPACE PLATE W/FLUSH FLOOR COVERPLATE
[Symbol]	DUPLEX CABLE OUTLET-(2) LEVEL 5 CABLES, 4 SPACE W/FLUSH FLOOR COVERPLATE
[Symbol]	TRIPLEX CABLE OUTLET-(3) LEVEL 5 CABLES, 4 SPACE W/FLUSH FLOOR COVERPLATE
[Symbol]	FOURPLEX CABLE OUTLET-(4) LEVEL 5 CABLES, 4 SPACE W/FLUSH FLOOR COVERPLATE
[Symbol]	SIMPLEX CABLE OUTLET-(1) LEVEL 5 CABLE, 4 SPACE ON DATA AND ELEC RACEWAY
[Symbol]	SIMPLEX CABLE OUTLET-(2) LEVEL 5 CABLE, 4 SPACE ON DATA AND ELEC RACEWAY
[Symbol]	SIMPLEX CABLE OUTLET-(3) LEVEL 5 CABLE, 4 SPACE ON DATA AND ELEC RACEWAY
[Symbol]	SIMPLEX CABLE OUTLET-(4) LEVEL 5 CABLE, 4 SPACE ON DATA AND ELEC RACEWAY
[Symbol]	SIMPLEX CABLE OUTLET-(1) LEVEL 5 CABLE, LOCATE ABOVE CEILING, REFER A-5.3 FOR ADD'L INFO AND RESPONSIBILITIES
[Symbol]	GENERAL ELECTRICAL NOTATIONS DESIGNATING PLACEMENT (AT ELECTRICAL-ONLY LOCATIONS), REFER ELECTRICAL DRAWING FOR EXACT REQUIREMENTS.
[Symbol]	J-BOX FOR DATA CABLING
[Symbol]	NEW POWER POLE
[Symbol]	RELOCATED POWER POLE FROM INTERIM PLAN STORAGE
[Symbol]	MOUNTING HEIGHT, MOUNT AT 18" AFF, UON
[Symbol]	J-BOX

NOTES:
 1. WORK SHOWN AS FEDEX OFFICE FURNISHED/INSTALLED SHALL BE WORK FURNISHED/INSTALLED BY THE VENDOR. GENERAL CONTRACTOR SHALL COORDINATE WITH THE FXO VENDOR IF NECESSARY.
 2. GC SHALL COORDINATE ALL VENDOR SUPPLIED ITEMS, PER SCHEDULE PROVIDED BY FXO CONSTRUCTION MANAGER.
 3. APPLICABLE TO WALMART PROJECTS ONLY: SEE "LANDLORD REQUIREMENTS" BOX NOTE ON SHEET A-1 COMPLETED OUTSIDE OF LEASE SPACE.

DATA & COMMUNICATIONS PLAN NOTES
 1. PROVIDE DEDICATED OR SEPARATE CONDUITS FOR ALL POS DATA LINES, SHARE WITH OTHER TELEPHONE OR DATA LINES.
 2. PROVIDE JUNCTION BOX (PULL BOX) FOR EVERY TWO 90 DEGREE TURNS CONDUIT AND FOR FIXTURE WHP CONNECTIONS.
 3. ALL CABLE CONDUIT SHALL BE A MINIMUM OF 1" DIAMETER.
 4. ALL CABLE CONDUIT UNDER SLAB SHALL BE A MINIMUM OF 1" DIA CONC.
 5. PROVIDE 1" DIAMETER CONDUIT FOR CABLE RUNS OF 4 CABLES OR LESS.
 6. PROVIDE 1 1/2" DIAMETER CONDUIT FOR CABLE RUNS OF BETWEEN 5 AND 7.
 7. DO NOT BUNDLE MORE THAN 10 CABLES IN ANY ONE CONDUIT.
 8. TERMINATE ALL CABLE CONDUITS INSIDE WALLS IN CLEAR AREA 6" ABOVE CEILING.
 9. VERIFY ALLOWED USE OF REGULAR CABLE IN PLENUM SPACES WITH LOCAL OFFICIALS. PROVIDE PLENUM RIBBON CABLE WHEN REQUIRED BY LOCAL AUTHORITY.
 10. PROVIDE CONDUIT FOR CABLE RUNS WHEN REQUIRED BY LOCAL AUTHORITIES.
 11. MOUNT ALL DATA OUTLET J-BOXES AT THE SAME HEIGHT AS THE ELEC OUTLET J-BOXES. ALIGN DATA AND ELECTRICAL OUTLETS VERTICAL AND HANG TOGETHER AT THE MANAGER'S WORK AREA/DESK.



1 DATA & COMMUNICATIONS PLAN
 1/4" = 1'-0"
 NORTH



SEAL
 DRAWING IS INCOMPLETE AND MAY NOT BE USED FOR REGULATORY APPROVAL PERMIT, OR CONSTRUCTION.

CONSULTING ENGINEER
 IDG PROJECT NO.: 80-752
 MEP PROJECT NO.: ---
 STRUCTURAL PROJECT NO.: ---
 CIVIL PROJECT NO.: ---

FedEx OfficeSM
 JOHNSON CITY, TN
 N ROAN RD
 2116 N ROAN ST, SUITE 1A
 JOHNSON CITY, TN 37601

CENTER NO.: 0531 SITE ID NO.: LX779947 PROGRAM: RTSZ

STIPULATION FOR REUSE
 THIS DRAWING WAS PREPARED FOR USE ON A SPECIFIC PROJECT IN JOHNSON CITY, TX 37601
 CONTEMPORARILY WITH ITS ISSUE DATE
 08/07/2020
 AND IT IS NOT SUITABLE FOR USE ON A DIFFERENT PROJECT OR AS A LATER TIME. USE OF THIS DRAWING FOR REFERENCE OR ON ANOTHER PROJECT ASSUMES THE SERVICES OF PROPER, LICENSED ARCHITECTS AND ENGINEERS. REPRODUCTION OF THIS DRAWING FOR REUSE ON ANOTHER PROJECT IS NOT ALLOWED UNLESS THE PROJECT OF THESE OFFICES AND SHALL NOT BE IN ANY MANNER OR USED ON ANY OTHER WORK EXCEPT BY THE AGREEMENT WITH THESE OFFICES AND SHALL BE VOID IF THERE IS ANY DISCREPANCY IN DIMENSIONS PRIOR TO THE COMMENCEMENT OF ANY WORK. THESE DRAWINGS ARE INTENDED FOR DESIGN ONLY AND NOT FOR USE IN CONSTRUCTION UNLESS APPROVED BY THE GOVERNING AUTHORITIES.

PERMIT/ BID SET

NO.	REVISIONS	DATE

PERMIT SET ISSUE DATE: 08/07/20
 BID SET ISSUE DATE: 08/07/20
 CONSTRUCTION SET ISSUE DATE: ---

DRAWING TITLE:
 DATA & COMMUNICATIONS PLAN

DRAWING NUMBER:
DC-1.0
 TEMPLATE (30 x 42) ISSUE: 10/26/19

NOTE:
 PROVIDE 2" DIAMETER CONDUIT PULL STRING FROM THE EXISTING TELEPHONE SERVICE ENTRY TO FXO TELEPHONE BOARD, FOR INSTALLATION OF THE TELEPHONE SERVICE LINES.

NOTE:
 CEILING MOUNTED LED MONITORS REQUIRE DATA BOX. REFER A-5.3 FOR EXACT REQUIREMENTS.

NOTE:
 FXO VENDOR (FTS) TO INSTALL AND MAINTAIN DATA SECURITY AT CUSTOMERS AREAS.

NOTE:
 ENSURE THAT ALL DATA/ELECTRICAL CONDUIT AND CORD AT SALES COUNTERS ARE NOT VISIBLE TO CUSTOMER, TYP.