

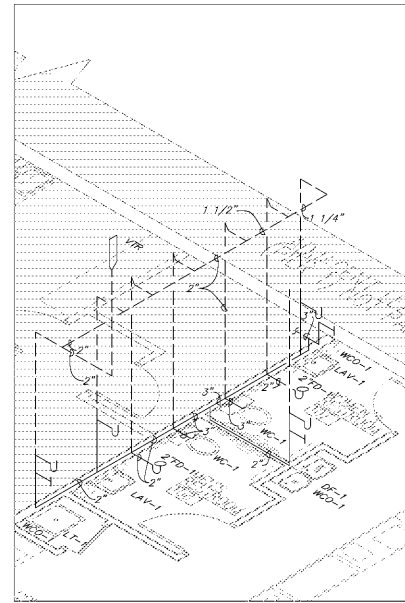
ELECTRICAL WATER HEATERS							
MARK	LOCATION	KW	GAL./HR @ 90 DEGREE RISE	ELECTRICAL VOLTS PHASE	STORAGE CAP	MANUFACTURER	REMARKS
HHW-1	CEILING SPACE	3.0	14	208 1	6 GALLONS	A.O. SMITH	DEL-6

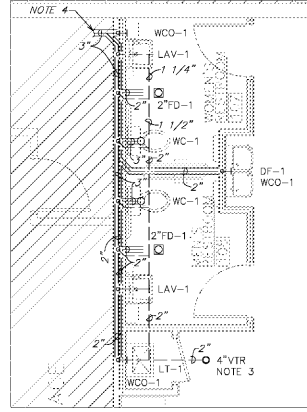
EXPANSION TANKS							
MARK	LOCATION	SERVES	CAPACITY (GALLONS)	WORKING PRESSURE	SIZE (APPROX.)	MANUFACTURER	REMARKS
ET-1	CLG. SPACE	DOM. HW	2.1	150 P.S.I.G.	10.25" X 9.25"	AMTROL	MODEL: ST-5

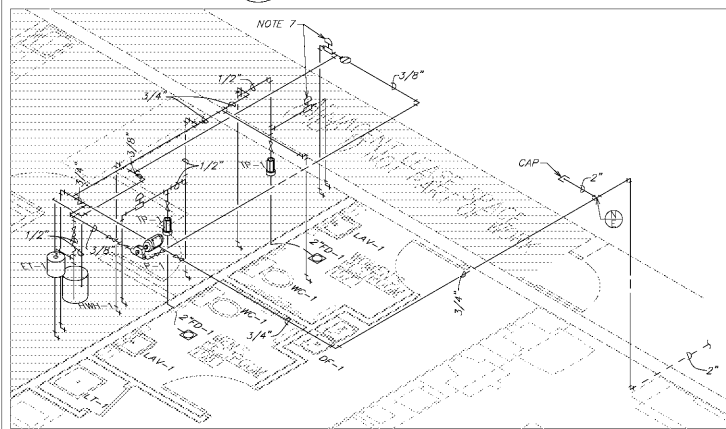
PUMPS											
MARK	LOCATION	SERVICE	GPM	HEAD (FT.)	MOTOR DATA			RPM	TYPE	MFR.	REMARKS
					HP	VOLTS	FH				
P-1	CEILING SPACE	DOM. HW	0.5	10.5	1/8	115	1	60	2950	INLINE	B & G MODEL: NBF-25



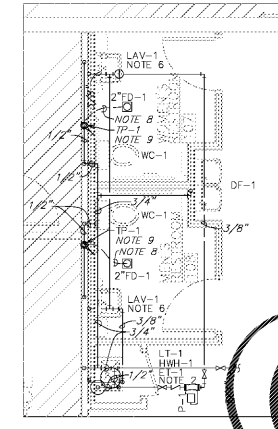
5 SANITARY RISER DIAGRAM  
SCALE: NOT TO SCALE



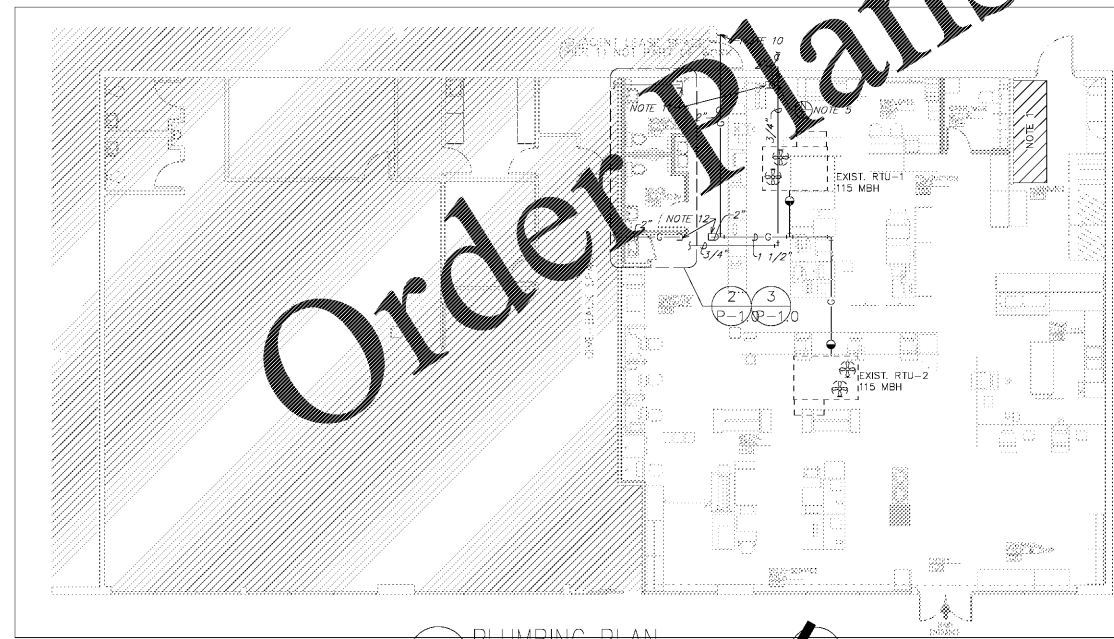
3 ENLARGED SANITARY PLAN  
SCALE: 1/4" = 1'-0"



4 WATER RISER DIAGRAM  
SCALE: NOT TO SCALE



2 ENLARGED WATER PLAN  
SCALE: 1/4" = 1'-0"



7 PLUMBING PLAN  
SCALE: 1/8" = 1'-0"

LAUNDRY TUB (LT-1):  
FIXTURE: FIAT #L-20-1/4" X 17-1/4" X 13"  
FLOOR MOUNTED LAUNDRY SINK, STAINPROOF, CRASHPROOF, FINISHED ON ALL FOUR SIDES, FACTORY-INSTALLED DRAIN BODY.

FAUCET:  
FIAT #B30-AA MOP-SERVICE SINK FITTING, SPOUT WITH BUCKET HOOK 3/4" HOSE THREAD END, VACUUM BREAKER ADJUSTABLE TOP BRACE, INLETS ON 8" CENTERS, POLISHED CHROME FINISH

SUPPLIES:  
#B32-AA HOSE AND WALL HOOK, 30" LONG HOSE WITH 3/4" CHROME COUPLING, WALL BRACKET CHROME CAST BRASS, 1-40 STAINLESS STEEL MOP HANGER OF STAINLESS STEEL WITH #4 FINISH, 24" LONG WITH 3 RUBBER SPRING LOADED GRIPS.

WASTE:  
DRAIN SHALL BE STAINLESS STEEL COMBINATION DOME STRAINER AND UNIT BASKET, FACTORY-INSTALLED STAINLESS STEEL DRAIN BODY FOR A GULCHED LEAD CONNECTION NOT LESS THAN 1" DEEP OR ODD-3 JOINT TO A 3" PIPE, CAST IRON P-TRAP.

WATER CLOSETS (WC-1) HANDICAPPED:  
FIXTURE: AMERICAN STANDARD #2467100, "CADET" 16 1/2" EL. 1.1 GAL./FLUSH PA, FLOOR MOUNTED, WATER SAVING TYPE, VITREOUS CHINA ELONGATED BOWL, PRESSURE-ASSISTED SHIPON JET FLUSHING ACTION, 16 1/2" HIGH BOWL, CLOSE COUPLED TANK, WATER SAVER TRIM, FULLY-GLAZED TRAP-WAY, BOTTOM OUTLET, 30 1/4" PROJECTION FROM WALL, 12" TO CENTERLINE OF OUTLET FROM WALL, 2 BOLT CAPS, FLUSHES ON 1:1 GALLONS.

TANK:  
AMERICAN STANDARD #4142.801, CLOSE COUPLED FLUSHMETER TANK, WATER SAVER TRIM, 1.1 GPF, CONFIRM TRIP LEVER LOCATION TO MEET ADA REQUIREMENTS WITH TRIP LEVER ON OPEN/LAVATORY SIDE OF THE TOILET TANK.

SUPPLY:  
3/8" CHROME PLATED BRASS TUBING w/ CHROME PLATED ANGLE STOP w/ WHEEL HANDLE.

SEAT:  
O.SONITE #85/SS COMFORT CURVE w/ SELF SUSTAINING HINGE, HIGH IMPACT, SOLID PLASTIC, HEAVY DUTY, OPEN FRONT, STAINLESS STEEL HINGE POSTS AND SURFACE CHECK, INTERNALLY MOLDED PERMANENT.

LAVATORIES (LAV-1) HANDICAPPED:  
FIXTURE: AMERICAN STANDARD #0724131 "CONRAD" WALL HUNG LAVATORY, VITREOUS CHINA LAVATORY, FAUCET LEDEGE, REAR OVERFLOW, 4" CENTERS ON FAUCET HOLES, 20 1/2" X 16 1/4" OVERALL DIMENSIONS, 15" X 10 7/8" X 6-1/4" DEEP SELF DRAINING DECK AREA WITH CONCEALED ARM SUPPORT.

TRIM:  
DELTA #500 SINGLE HANDLE MIXING FAUCETS, 1/2" LEVER TYPE HANDLE CONTROL SHALL BE ROTATING BALL BEARING, NON-METALLIC SEATING SURFACES, HANDLE SHALL ALWAYS RETURN TO NEUTRAL POSITION WHEN HANDLE IS TURNED OFF, ALL EXPOSED FINISHES SHALL BE POLISHED.

SUPPLIES:  
3/8" CHROME PLATED ANGLE STOP w/ WHEEL HANDLE, 3/8" CHROME PLATED FLEXIBLE BRASS RISER, 1/2" CHROME PLATED FLEXIBLE BRASS RISER, 1/2" CHROME PLATED FLEXIBLE BRASS RISER, 1/2" CHROME PLATED FLEXIBLE BRASS RISER.

WASTE:  
AMERICAN STANDARD #7723016 P-TRAP DRAIN FOR WHEELCHAIR LAVATORY, 4-1/2" O.D. AND 1-1/4" I.D., ADJUSTABLE BRASS P-TRAP WITH CEILING PLUG RUN, 1/2" CHROME PLATED BRASS WASTE AND WALL INSULATE ALL EXPOSED WASTES.

CARRIER:  
ZURN COMPANY Z24-1211, FLOOR-MOUNT SINGLE LAVATORY CARRIER, 17" HIGH, 18" WIDE, 18" DEEP AND SECURING SCREWS, 1" CIRCULAR UPRIGHTS AND BLOCK BASES SECURED TO FLOOR w/ 7/16" BOLTS AND ANCHORS APPROPRIATE CODE TO SUIT WALL CONSTRUCTION AND TYPE OF FIXTURE PURCHASED.

ACCESSORIES:  
"RUBBER 'LAV-GUARD' UNDER-SINK PROTECTIVE PIPE COVER, 2" HIGH, 17" LONG, 18" WIDE, 18" DEEP, 1" DIA. VALVE COVERS, TWO SUPPLY TUBE COVERS, ONE 5" OFFSET TAILPIECE WHEELCHAIR STRAINER COVER, WHITE COVER WITH RED RELEASE FASTENERS, ANGLE STOP SHALL HAVE LOCK-LID LOCKING ACCESS COVER.

WALL CLEANOUTS (WCO-1)  
WALL: ZURN COMPANY #Z-1446, COATED CAST IRON CLEANOUT LEAD, HUB AND SPIGOT CONNECTION, BRONZE PLUG, ROUND STAINLESS STEEL WALL ACCESS COVER WITH SCREW.

COVER: ROUND STAINLESS STEEL WALL ACCESS COVER WITH SCREW.

DRINKING FOUNTAIN (DF-1) HANDICAPPED:  
FIXTURE: OASIS MODEL P0262S, SELF-CONTAINED TWO LEVEL WHEELCHAIR DRINKING FOUNTAIN, WALL MOUNTED, WALL MOUNTING BRACKETS, ONE-PIECE BACKSPASH AND IS POLISHED TO A LUSTRIOUS SATIN FINISH. SANDSTONE POWDER COAT PAINT ON GALVANIZED STEEL, SELF-CLOSING PUSH-BAR CONTROL LOCATED FRONT AND SIDES OF UNIT, IS 1/4" X 18 5/8" PROJECTION OF UNIT FROM WALL.

SUPPLIES:  
1/2" COLD WATER WITH CONCEALED STOP WITH WHEEL HANDLE, 1/2" CHROME PLATED FLEXIBLE BRASS RISER.

HEIGHT:  
MOUNT CENTERLINE OF LOWER UNIT ORIFICE AT 16 1/2" ABOVE FINISH FLOOR.

WASTE:  
1 1/2" 17 GAUGE CHROME PLATED BRASS ADJUSTABLE P-TRAP WITH CLEANOUT PLUG, 1 1/2" CHROME PLATED BRASS WASTE TO WALL, CONCEALED IN UNIT.

ACCESSORIES:  
APRON TO BE PROVIDED ON HIGH MOUNTED WATER COOLER TO PROVIDE THE MANDATORY 27" FLOOR TO UNDERSIDE REQUIREMENT OF THE AMERICANS WITH DISABILITIES ACT (A.D.A.). PROVIDE APRON ONLY WHEN COOLER IS MOUNTED IN AN EXPOSED WALL. APRON NOT REQUIRED WHEN COOLER IS MOUNTED IN AN ALCOVE. APRON PART NUMBER: 035174-001.

TRAP PRIMER (TP-1)  
FIXTURE: PRECISION PRODUCTS: P2-500  
PRESSURE ACTIVATED TRAP PRIMER, BRASS CONSTRUCTION, PISTON OPERATED, ADJUSTMENT FOR VARIABLE PRESSURES, INSTALL TRAP PRIMER A MINIMUM OF 12" ABOVE THE TRAP BEING SERVED, PROVIDE AIR GAP FITTING WITH 1/2" MALE NPT INLET FITTING AND 1/2" FEMALE OUTLET FITTING.

FLOOR DRAIN (2FD-1)  
FIXTURE: JR SMITH: 2010-NB, ZURN: Z4159  
STANDARD STRAINER, COATED CAST IRON, TWO-PIECE BODY, DOUBLE DRAINAGE FLANGE, ADJUSTABLE EXTENSION AS REQUIRED BY APPLICATION, ADJUSTABLE COLLAR WITH SERPENTINE SHOTS INVERTIBLE NON-PUNCTURING MEMBRANE CLAMP, FLASHING CLAMP WITH 24" X 24" 4 LB. LEAD FLASHING FOR FLOOR DRAINS INSTALLED ABOVE SLAB ON GRADE. BOTTOM OUTLET, OUTLET CONNECTION METHOD SHALL BE COMPATIBLE WITH PIPING MATERIALS IN ACCORDANCE WITH THE SPECIFICATIONS. POLISHED NICKEL BRONZE FINISH, 5" DIAMETER ROUND STRAINER.

GENERAL NOTES:

- THE EXISTING CONDITIONS ARE BASED ON "AS-BUILT" DRAWINGS AND/OR LIMITED FIELD VERIFICATIONS. THE CONTRACTOR SHALL ADJUST TO ACTUAL FIELD CONDITIONS AT NO ADDITIONAL EXPENSE TO THE PROJECT, NO ADDITIONAL CORRECTION SHALL BE PROVIDED FOR ANY EXTENSION TO THE CONTRACTOR'S FAILURE TO VISIT THE PROJECT SITE AND/OR PREDETERMINATION OF EXISTING CONDITIONS PRIOR TO SUBMITTING THE BID. ANY DISCREPANCIES SHALL BE IMMEDIATELY REPORTED TO THE ARCHITECT FOR RESOLUTION.
- THE CONTRACTOR SHALL FAMILIARIZE HIMSELF WITH THE INCIDENTAL DEMOLITION WORK PRIOR TO BEGINNING AND COMMENCEMENT OF WORK. THE CONTRACTOR IS RESPONSIBLE FOR THE IDENTIFICATION OF ALL EXISTING EQUIPMENT REQUIRED FOR THE INSTALLATION/CONSTRUCTION OF NEW WORK.
- ALL WORK SHALL BE COMPLETED IN ACCORDANCE WITH ALL APPLICABLE GOVERNMENTAL AND LOCAL CODE REQUIREMENTS.
- PROVIDE ACCESS PANELS AS REQUIRED TO ALLOW ACCESS TO VALVES, EQUIPMENT, ETC. LOCATED ABOVE UNDESIRABLE CEILING AND WALL CAVITIES.
- ALL SANITARY LINES AND PLUMBING FIXTURES ON THE PROJECT SHALL HAVE AN APPROVED MEANS OF SEWAGE BACKFLOW PREVENTION. FIXTURE SPECIFIC BACKFLOW PREVENTION INCLUDING AIR GAPS AND VACUUM BREAKERS ARE AN ACCEPTABLE MEANS OF BACKFLOW PREVENTION.
- PIPE SIZES INDICATED ON THE PLANS ARE MINIMUM. THE CONTRACTOR SHALL PROVIDE PIPE SIZES EQUAL TO OR GREATER THAN THE SPECIFIED SIZES. THE CONTRACTOR MAY INCREASE PIPE SIZES AS REQUIRED AT NO ADDITIONAL EXPENSE TO THE PROJECT.
- REFER TO THE PLUMBING FIXTURE SCHEDULE FOR INDIVIDUAL PLUMBING FIXTURE CONNECTION SIZE REQUIREMENTS.
- COORDINATE ALL SLAB PENETRATIONS WITH GENERAL CONTRACTOR PRIOR TO CONSTRUCTION, MAINTAIN A MINIMUM OF 2" CLEARANCE FROM THE EDGE OF THE SLAB OPENING TO ANY STRUCTURAL MEMBERS AND PIPES.
- SLEEVE OR CORE-DRILL FLOOR SLABS, WALLS, ETC. AS REQUIRED FOR PIPING AND FITTINGS. PROVIDE GROUNDING AND GROUNDING CLIPS TO STRUCTURAL JOISTS, ETC. BEFORE DRILLING.
- THE CONTRACTOR SHALL OBTAIN A COPY OF THE LANDLORD'S TENANT PERIA MANUAL PRIOR TO BEGINNING THE TENANT CRITERIA MANUAL REQUIREMENTS. THE CONTRACTOR SHALL BE RESPONSIBLE FOR COMPLYING WITH THE LANDLORD'S REQUIREMENTS AND ANY ADDITIONAL EXPENSE TO THE PROJECT.
- PROVIDE TEMPORARY COVERS, CAPS, OR PLUGS ON SANITARY SEWER SYSTEM THROUGHOUT THE DURATION OF CONSTRUCTION OF THE PROJECT AND AFTER SIMILAR METHODS OF TEMPORARY COVERS SHALL BE USED. UPON COMPLETION OF CONSTRUCTION, COMPLETELY REMOVE ANY TEMPORARY SYSTEM INSIDE THE ENTIRE SYSTEM BY SINKING TO THE MAINLINE SYSTEM IMMEDIATELY PRIOR TO PROJECT TURNOVER TO THE OWNER.
- ALL BELOW GRADE SANITARY LINES SHALL HAVE A MINIMUM OF 2" OR 1" DIA. ACCORDANCE WITH LOCAL CODE REQUIREMENTS AND THE OWNER'S SPECIFICATIONS. SANITARY TEE FITTINGS SHALL NOT BE INSTALLED IN DRAIN, WASTE, AND VENT (DWV) SYSTEMS.
- INSTALL SANITARY PIPING 1/2" OR 3/4" OR STEEPER AT A SLOPE OF 1/4" PER FOOT AND SANITARY TRIM AND LARGER AT A SLOPE OF 1/8" PER FOOT.
- ALL HANDLES ON ACCEPTABLE WALL OR CLOSET SHALL HAVE THE FLUSHING HANDLE ON THE INSIDE OF THE WALL. ACCESSIBLE WALL ACCESSIBLE SHALL AS REQUIRED BY ADA REQUIREMENTS.
- ALL PRESSURE AND TEMPORARY FAUCETS SHALL HAVE AN AUTOMATIC SAFETY WATER SHUT-OFF SYSTEM WITH AN ADVISORY NOTE TO THE ARCHITECT.
- IDENTIFY ALL EXISTING SPRINKLER PIPING AND HEADS AND PROVIDE A COMPLETE SPRINKLER SYSTEM IN ALL RESPECTS. RELOCATE/ADD NEW SPRINKLER DROPS AND HEADS WHERE REQUIRED TO PROVIDE COMPLETE COVERAGE. COORDINATE THE AREA OF CONSTRUCTION, COORDINATE FIRE SPRINKLER PIPING AND HEADS LOCATIONS WITH ALL TRADES PRIOR TO FABRICATION AND/OR INSTALLATION. IF COUPLERS OCCUR BETWEEN PIPING HEADS AND LIGHTS, DIFFUSERS, DUCTWORK, ETC., THE FIRE SPRINKLER PIPING/HEADS SHALL BE RELOCATED OR REROUTED AT NO ADDITIONAL EXPENSE TO THE PROJECT. AN ADEQUATE SUPPLY OF EXTRA PIPING AND FITTINGS SHALL BE MAINTAINED ON SITE TO ALLOW FOR FIELD MODIFICATIONS. PERFORM HYDRAULIC CALCULATIONS AS REQUIRED BY NFPA, LOCAL, STATE CODES, AND THE OWNER'S INSURANCE AGENCY. APPROVED SHOP DRAWINGS DO NOT PRECLUDE REROUTING IF SO REQUIRED BY THE ARCHITECT/ENGINEER.

PLUMBING NOTES:

- THIS SPACE IS RESERVED FOR ELECTRICAL EQUIPMENT. NO PIPING SHALL PASS BELOW, ABOVE, OR AROUND ELECTRICAL EQUIPMENT. PROVIDE CODE REQUIRED MINIMUM CLEARANCE ABOVE ELECTRICAL EQUIPMENT ACCESS SPACE.
- FURNISH AND INSTALL WATER HEATER AND EXPANSION TANK AS INDICATED ON THE PLANS. PIPE WATER HEATER RELIEF AND SECONDARY DRAIN PAN DISCHARGE TO THE NEAREST MOP SINK OR FLOOR DRAIN BELOW THE WATER HEATER. PROVIDE A CODE APPROVED AIR GAP ON THE DISCHARGE OF THE WATER HEATER RELIEF AND SECONDARY DRAIN. REFER TO DETAILS SHEET FOR ADDITIONAL INFORMATION.
- INSTALL 4" VENT THROUGH ROOF. INSTALL VENT THROUGH ROOF A MINIMUM DISTANCE OF 15'-0" FROM ALL FRESH AIR INLETS AND BUILDING OPENINGS. CONNECT THE NEW SANITARY SEWER TO THE EXISTING SANITARY SEWER OF EQUAL OR GREATER SIZE. FIELD VERIFY THE EXACT LOCATION, SIZE, AND INVERT ELEVATION OF THE EXISTING SANITARY SEWER PRIOR TO CONSTRUCTION. ADJUST THE NEW SANITARY SEWER AS REQUIRED TO ALLOW FOR CONNECTION TO THE EXISTING SANITARY SEWER SYSTEM. MAINTAIN CODE MINIMUM PIPE SLOPES.
- CONNECT THE NEW DOMESTIC COLD WATER LINE TO AN EXISTING COLD WATER LINE OF EQUAL OR GREATER SIZE. FIELD VERIFY THE EXACT LOCATION AND SIZE OF THE EXISTING WATER LINE PRIOR TO CONSTRUCTION. ADJUST THE NEW WATER LAYOUT AS REQUIRED TO ALLOW FOR CONNECTION TO THE EXISTING WATER SYSTEM.
- PROVIDE THERMOSTATIC MIXING VALVE, POWERS #LF480 OR EQUAL, BELOW FIXTURE. SET TEMPERATURE AS REQUIRED BY LOCAL JURISDICTION. THERMOSTATIC MIXING VALVE SHALL BE IN ACCORDANCE WITH ANSI/ASSE 1070 WATER HAMMER ARRESTORS SHALL BE SIZED AND INSTALLED IN ACCORDANCE WITH THE MANUFACTURER'S RECOMMENDATIONS. LOCATIONS SHOWN ARE FOR REFERENCE PURPOSES ONLY.
- 1/2" FLEXIBLE CONTINUOUS TYPE "X" COPPER TUBING BELOW GRADE FROM TRAP PRIMER TO FLOOR DRAIN. NO FITTINGS OR SPLICES ARE ALLOWED BELOW GRADE. INSTALL TRAP PRIMER HIGH IN THE CEILING SPACE. FURNISH AND INSTALL AN ACCESS PANEL AS NECESSARY TO MAINTAIN EQUIPMENT.
- EXISTING NATURAL GAS METER SERVING 230 MPH. THE SYSTEM DESIGN IS BASED ON 0.25 PSI DELIVERY PRESSURE. WITH A PRESSURE DROP OF 3 INCHES OF WATER COLUMN AND A TOTAL DEVELOPED LENGTH OF 5 FEET, THE CONTRACTOR SHALL COORDINATE THE METER PLACEMENT, AVAILABLE PRESSURE, AND ANY SERVICE REQUIREMENTS WITH THE LOCAL UTILITY PRIOR TO CONSTRUCTION. IF THE METER DELIVERY PRESSURE INDICATED IS NOT AVAILABLE FROM THE UTILITY COMPANY, THE CONTRACTOR SHALL NOTIFY THE ARCHITECT/ENGINEER IMMEDIATELY.
- CUT AND CAP EXISTING WATER LINE FEEDING THE GIVE BACKSPACE.
- CUT AND CAP EXISTING GAS LINE FEEDING THE GIVE BACKSPACE.

LEGEND

— EXISTING  
— NEW WORK  
⊕ NEW TO EXISTING CONNECTION

PLUMBING SYMBOL LEGEND			
SYMBOL	DESCRIPTION	SYMBOL	DESCRIPTION
(Symbol)	SANITARY DRAIN ABOVEGROUND	(Symbol)	CLEAN OUT
(Symbol)	SANITARY DRAIN BELOWGROUND	(Symbol)	GRADE CLEAN OUT
(Symbol)	GREASE WASTE ABOVEGROUND	(Symbol)	WALL CLEAN OUT
(Symbol)	GREASE WASTE BELOWGROUND	(Symbol)	NOT IN CONTRACT
(Symbol)	ADD WASTE ABOVEGROUND	(Symbol)	VENT THROUGH ROOF
(Symbol)	ADD WASTE BELOWGROUND	(Symbol)	BALL VALVE
(Symbol)	VENT LINE	(Symbol)	CHECK VALVE
(Symbol)	ADD VENT	(Symbol)	PRESSURE REGULATING VALVE (PRV)
(Symbol)	WASTE ANESTHESIA GAS DISPOSAL	(Symbol)	GAS COCK
(Symbol)	STORM DRAIN ABOVEGROUND	(Symbol)	PRESSURE REGULATING VALVE (PRV) AND GAS COCK
(Symbol)	STORM DRAIN BELOWGROUND	(Symbol)	MINING VALVE
(Symbol)	OVERFLOW STORM DRAIN	(Symbol)	GAS COCK
(Symbol)	COLD WATER (CW)	(Symbol)	VALVE IN RISE
(Symbol)	HOT WATER (HW)	(Symbol)	AUTOMATIC BALANCING VALVE
(Symbol)	HOT WATER CIRCULATING (HWC)	(Symbol)	HOSE BEBB
(Symbol)	HOT WATER 140'	(Symbol)	WALL HYDRANT
(Symbol)	HOT WATER CIRCULATING 140'	(Symbol)	FIRE HYDRANT
(Symbol)	TEMPERED WATER	(Symbol)	WTRFD CLAY PIPE
(Symbol)	TEMPERED WATER CIRCULATING	(Symbol)	CAST IRON
(Symbol)	COLD SOFT WATER	(Symbol)	INVERT ELEVATION
(Symbol)	HOT SOFT WATER	(Symbol)	BELOW FINISHED FLOOR
(Symbol)	HOT SOFT WATER CIRCULATING	(Symbol)	PLUMBING RISER NUMBER
(Symbol)	FIRE LINE	(Symbol)	DOWNSPOUT NOZZLE
(Symbol)	GAS LINE	(Symbol)	ROOF DRAIN/OVERFLOW ROOF DRAIN
(Symbol)	COMPRESSED AIR LINE		
(Symbol)	VACUUM LINE		
(Symbol)	OXYGEN LINE		
(Symbol)	CONDENSATE DRAIN		

PIPING MATERIAL LEGEND

Sanitary Sewer Piping, Buried Within 5 Feet (1500 mm) of Building:  
1. PVC Pipe: ASTM D 2665 or ASTM D 3034. (Where permitted by local code).  
a. Fittings: PVC.  
b. Joints: Solvent welded, with ASTM D 2564 solvent cement.

Sanitary Sewer Piping, Above Grade:  
1. Cast Iron Pipe: ASTM A 74, service weight.  
a. Fittings: Cast iron.  
b. Joint Seal: ASTM C 564 neoprene gaskets, or lead and oakum.

Water Piping, Above Grade:  
1. Copper Tube: ASTM B 88 (ASTM B 89M), Type L (S), Drawn (H).  
a. Fittings: ASME B16.18, cast copper alloy or ASME B16.22, wrought copper and bronze.  
b. Joints: ASTM B 32, alloy lead free for all pipe 2" and smaller, sl/foa or Phasco for all 2 1/2" and larger and for all below grade locations solder. All flux shall be non-corrosive type.

PROJECT COORDINATOR

**idGROUP**  
2841 IRVING BLVD.  
DALLAS, TEXAS 75207  
TEL: 214-488-8800

SEAL

CONSULTING ENGINEER

**Schnackel**  
engineers  
10000 Dallas, Texas  
800-561-0963

ARCHITECTURAL PROJECT NO.: 80-7920  
MEP PROJECT NO.: 200183  
STRUCTURAL PROJECT NO.: ---  
DVA PROJECT NO.: ---

**FedEx Office SM**  
JOHNSON CITY, TN  
N ROAN RD  
2116 N ROAN ST, SUITE 1A  
JOHNSON CITY, TN 37601

OWNER: JOHNSON CITY, TN  
PROGRAM: RTSZ

STIPULATION FOR REUSE  
THIS DRAWING IS PREPARED FOR USE BY THE PROPOSOR IN THE CITY OF JOHNSON CITY, TN 37601.  
DATE: 08/07/2020

PERMIT / BID SET

? NO FedEx Office

NO.	REVISIONS:	DATE:

PERMIT SET ISSUE DATE: 08/07/2020  
BID SET ISSUE DATE: 08/07/2020  
CONSTRUCTION SET ISSUE DATE: ---

DRAWING TITLE:  
**PLUMBING PLAN**

DRAWING NUMBER:  
**P-1.0**

TEMPLATE (30X42) ISSUE: 10/28/19