

ELECTRICAL SYMBOL LEGEND (SOME MAY NOT BE USED)

Table with columns for SYMBOL, DESCRIPTION, SYMBOL, and DESCRIPTION. Lists various electrical symbols such as wall mounted single receptacle, meter and socket, and fire alarm devices.

ABBREVIATIONS AND MODIFIERS (SOME MAY NOT BE USED)

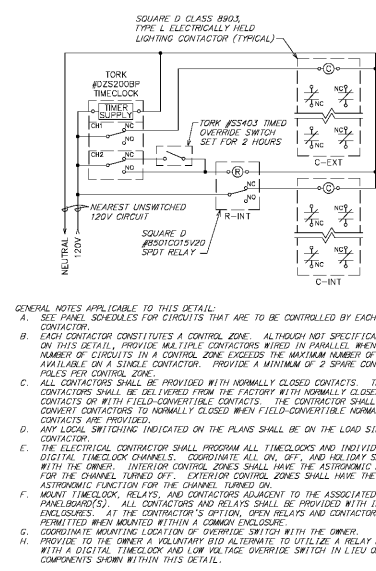
Table with columns for symbol and description. Lists abbreviations like AFF (above finished floor), SPT (single pole, single throw), and modifiers like X (weatherproof).

AUTOMATIC TIMECLOCK SCHEDULE

Table with columns: MARK, CLOCK TYPE, CHANNELS, SWITCH/CONTACTS, INPUT VOLTAGE, RESERVE/BACKUP POWER, ASTRONOMIC, OSURE, MANUFACTURE, CATALOG NUMBER, and DETAIL REFERENCE.

ONTACTOR SCHEDULE

Table with columns: MARK, CONTACTOR TYPE, CONTACT RATING, CONTACT QTY, CONTACT N.C., CONTACT VOLTAGE, MANUFACTURE, CATALOG NUMBER, CIRCUITS CONTROLLED, CONTACTOR CONTROLLED BY, and DETAIL REFERENCE.



2 LIGHTING CONTROL DETAIL NOT TO SCALE

EXISTING PANEL "C" table showing load analysis for phases A, B, and C. Includes columns for notes, o.k.t., load description, and load (VA).

LOAD ANALYSIS FOR PANEL "C" (INCLUDING SUBFEEDS) table with columns for load description, demand factor, and demand.

EXISTING POWER PANEL "MDP" table showing load analysis for phases A, B, and C. Includes columns for notes, o.k.t., load description, and load (VA).

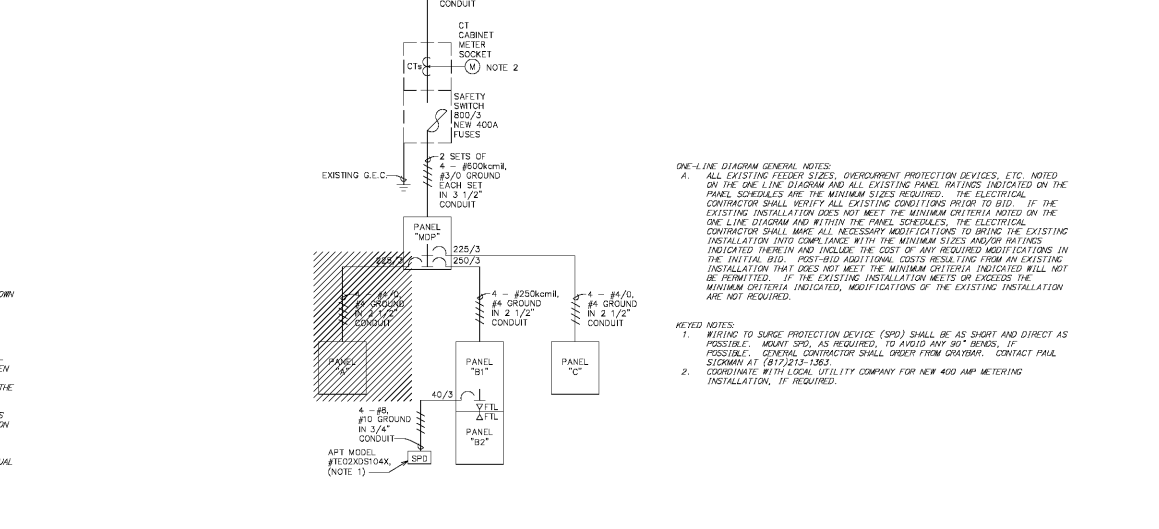
LOAD ANALYSIS FOR POWER PANEL "MDP" (INCLUDING SUBFEEDS) table with columns for load description, demand factor, and demand.

EXISTING PANEL "B1" table showing load analysis for phases A, B, and C. Includes columns for notes, o.k.t., load description, and load (VA).

LOAD ANALYSIS FOR PANEL "B1" (INCLUDING SUBFEEDS) table with columns for load description, demand factor, and demand.

EXISTING PANEL "B2" table showing load analysis for phases A, B, and C. Includes columns for notes, o.k.t., load description, and load (VA).

LOAD ANALYSIS FOR PANEL "B2" (INCLUDING SUBFEEDS) table with columns for load description, demand factor, and demand.



1 ELECTRICAL ONE-LINE DIAGRAM NOT TO SCALE

PROJECT COORDINATOR section with idGROUP logo, address (2841 IRVING BLVD, DALLAS, TEXAS 75207), and contact information.

FedEx Office logo and address: JOHNSON CITY, TN; 2116 N ROAN ST, SUITE 1A; JOHNSON CITY, TN 37601.

STIPULATION FOR REUSE: THIS DRAWING IS PROVIDED FOR USE ONLY AS A REFERENCE BY JOHNSON CITY, TX 37601.

PERMIT/ BID SET section with a table for revisions and dates.

2020 FedEx Office logo, drawing number E-3.0, and template information (30X42) issue 10/28/19.