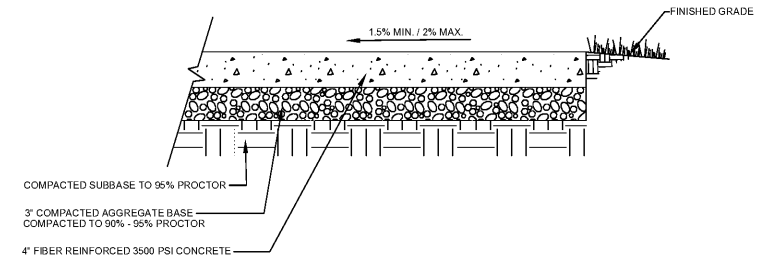
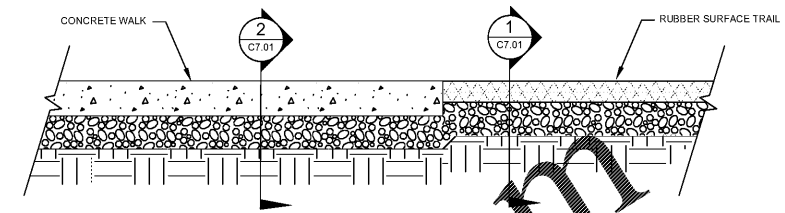


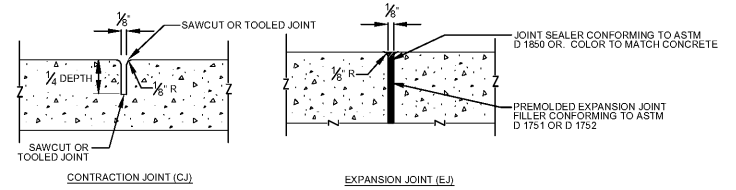
1 RUBBER SURFACE TRAIL DETAIL
C7.01 N.T.S



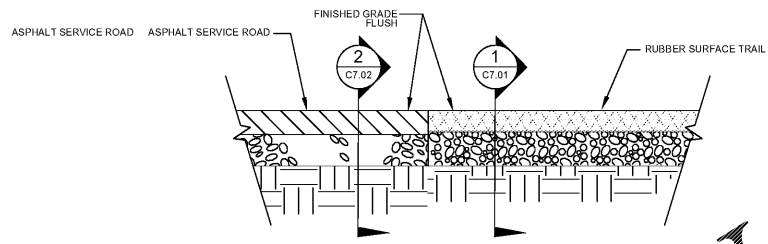
2 CONCRETE PAVING DETAIL
C7.01 N.T.S PEDESTRIAN



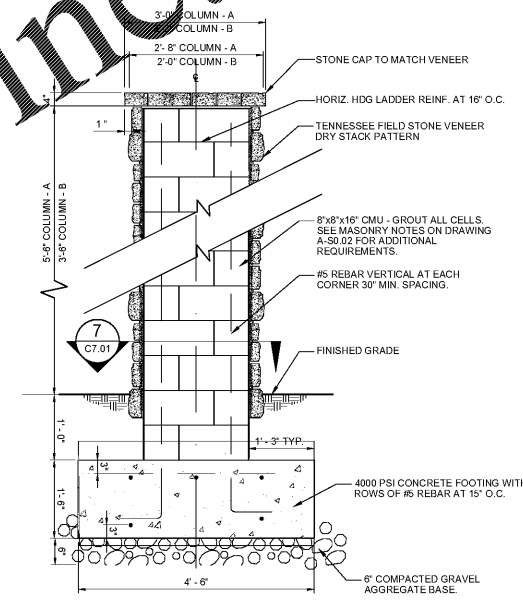
3 SIDEWALK / TRAIL CONNECTION DETAIL
C7.01 N.T.S



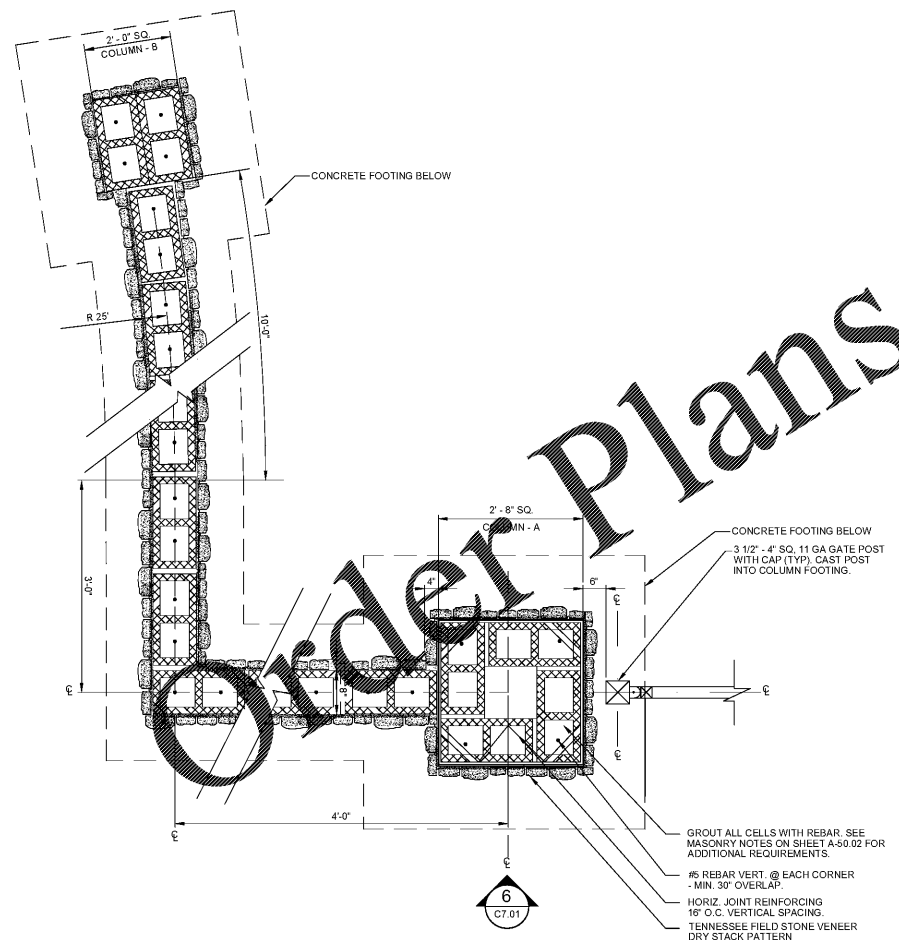
4 EXPANSION / CONTRACTION JOINT
C7.01 N.T.S CONCRETE PAVING



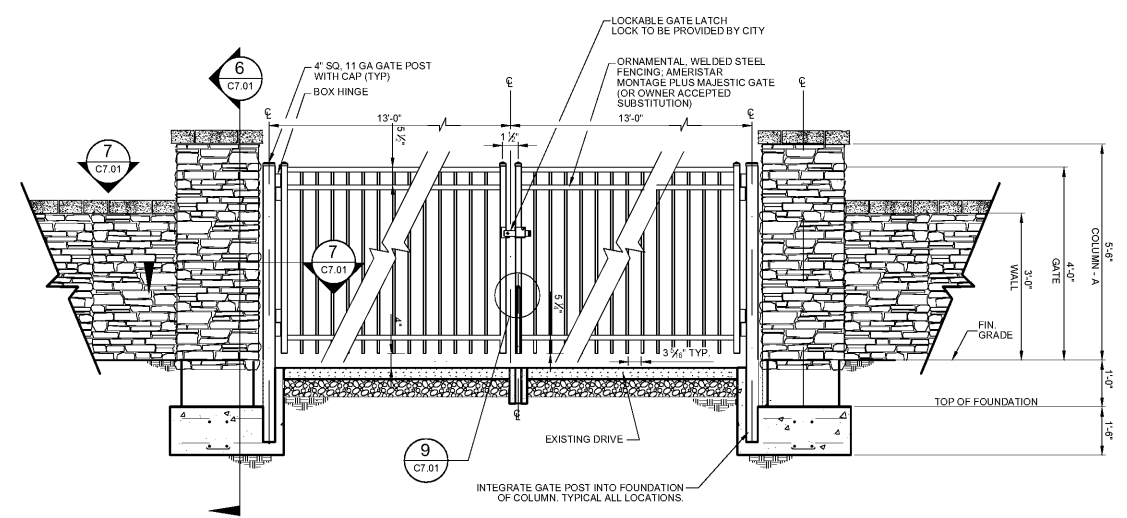
5 ASPHALT DRIVE / RUBBER TRAIL CROSSING CONNECTION
C7.01 N.T.S



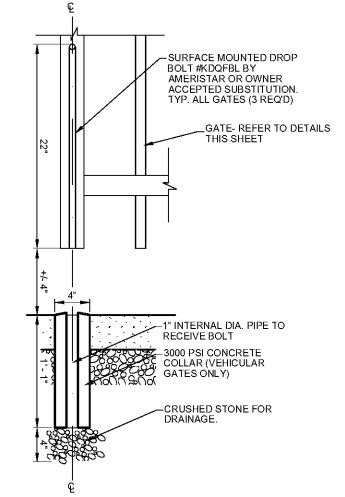
6 COLUMN CROSS SECTION DETAIL
C7.01 N.T.S



7 COLUMN W/ GATE POST CROSS-SECTION DETAIL
C7.01 N.T.S



8 ORNAMENTAL FENCE, GATE & COLUMN
C7.01 N.T.S SECTION AT VEHICULAR ENTRY



9 GATE DROP BOLT DETAIL
C7.01 N.T.S

USER: BSPETERSON
FILE: \\BSPETERSON\BSP\108104_CAD\CIVIL\C7.01\108104_C7.01.dwg
DATE PLOTTED: 07/14/2020
PLOTTER: HP4000

Order Plans @

www.LDILine.com

| REV. | DR. | CHK. | DATE | DESCRIPTION |
|------|-----|------|------------|-------------------|
| A | AKC | JBS | 05/07/2020 | 100% OWNER REVIEW |
| B | AKC | JBS | 06/15/2020 | DRAFT BID PACKAGE |
| C | AKC | JBS | 07/14/2020 | BID PACKAGE |