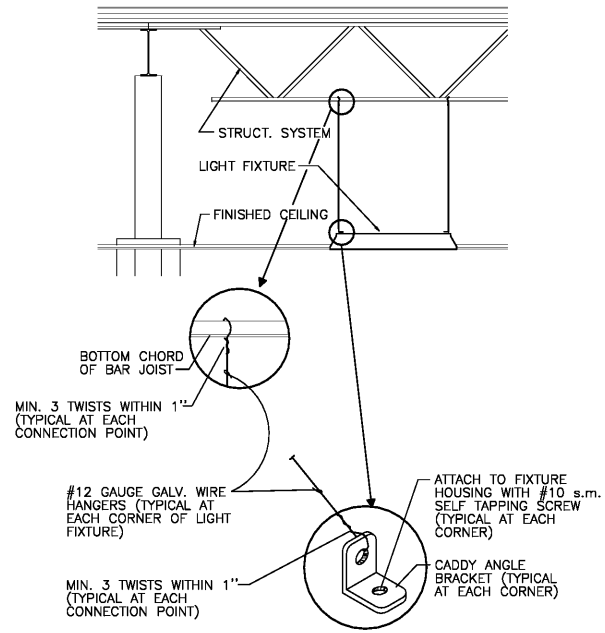
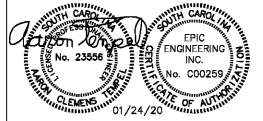


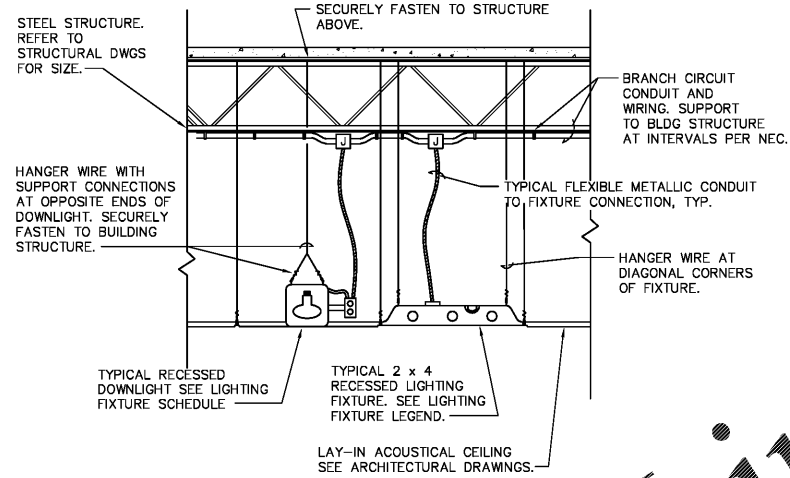
CONSULTANT LOGO

EPIC ENGINEERING INC.
P.O. BOX 2132 • MT. PLEASANT, SC 29485
(843) 949-6876 EPIC JOB NO. 19086

SEALS



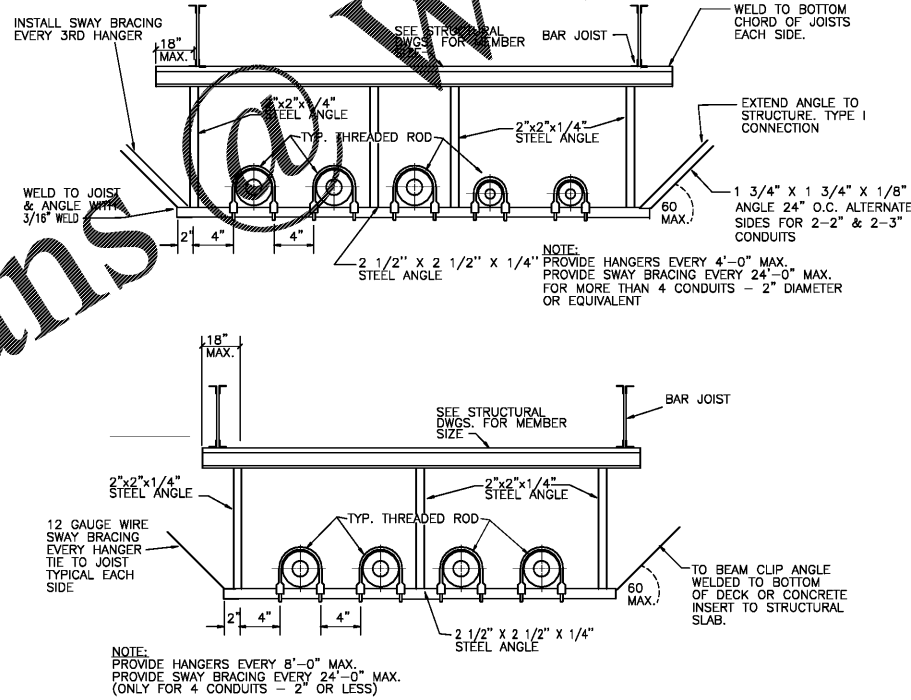
**TYPICAL 2x4'
LIGHT FIXTURE SUPPORT DETAIL**
SCALE: NONE



- NOTES:
1. COMPLY WITH NEC. ART. 300 FOR FIRE RATED CEILINGS WHERE SPECIFIED.
2. PROVIDE A MINIMUM OF TWO HANGER WIRES TO STRUCTURE PER 2x4 FIXTURE.

TYPICAL LIGHT FIXTURE SUPPORT DETAIL
SCALE: NONE

WHERE CONDUITS RUNS PERPENDICULAR TO JOISTS, CONNECT THREADED RODS TO BOTTOM CHORD OF JOIST.



CONDUIT HANGER DETAILS *
SCALE: NONE

* NOTE - ALL CIRCUITS TO BE RUN IN SLAB WHERE POSSIBLE. THIS DETAIL TO BE USED WHERE EXCEPTIONS MUST BE MADE FOR LIGHTING AND OTHER EQUIPMENT.

Order Plans @ www.LDILine.com

THE OPPORTUNITY CENTER
8570 RIVERS AVE N CHARLESTON, SC

SHEET ISSUE:

01/14/2020 Redline Set
01/24/2020 Furnish Set

PRINCIPAL IN CHARGE: ACT
PROJECT ENGINEER: ACT
DRAWN BY: RAD

SHEET TITLE:
DETAILS

PROJ. NO. MFS 017348.00

SHEET NO.

E002