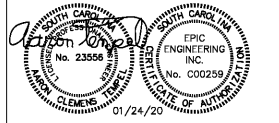


GENERAL NOTES (THIS SHEET ONLY)

1. PLUMBING CONTRACTOR TO PROVIDE AND INSTALL SEISMIC GAS PIPING ROOF SUPPORTS BY KINETICS NOISE CONTROL, MODEL KSPS OR APPROVED EQUAL. SUBMIT SHOP DRAWINGS TO ENGINEER FOR REVIEW. SHOP DRAWINGS WILL INCLUDE SUPPORT SUBMITTALS AND DRAWINGS SHOWING LOCATIONS AND INSTALLATION REQUIREMENTS.
2. PLUMBING CONTRACTOR TO PROVIDE AND INSTALL GAS PIPING ROOF SUPPORTS BY RTS, MODEL RTSPECES. REFER TO PIPE SUPPORT INTERVAL TABLE ON DRAWING P001 FOR SPACING REQUIREMENTS.
3. ALL GAS PIPING SHALL COMPLY WITH NOTE 25 ON DRAWING P001.
4. PROVIDE ALL EQUIPMENT WITH NON-VENTING GAS REGULATORS.

KEYED NOTES (THIS SHEET ONLY)

- ① REFER TO TYPICAL GAS PIPING CONNECTION DETAIL ON P001.
- ② PROVIDE WEATHER TIGHT PIPE PORTAL ROOF PENETRATION.

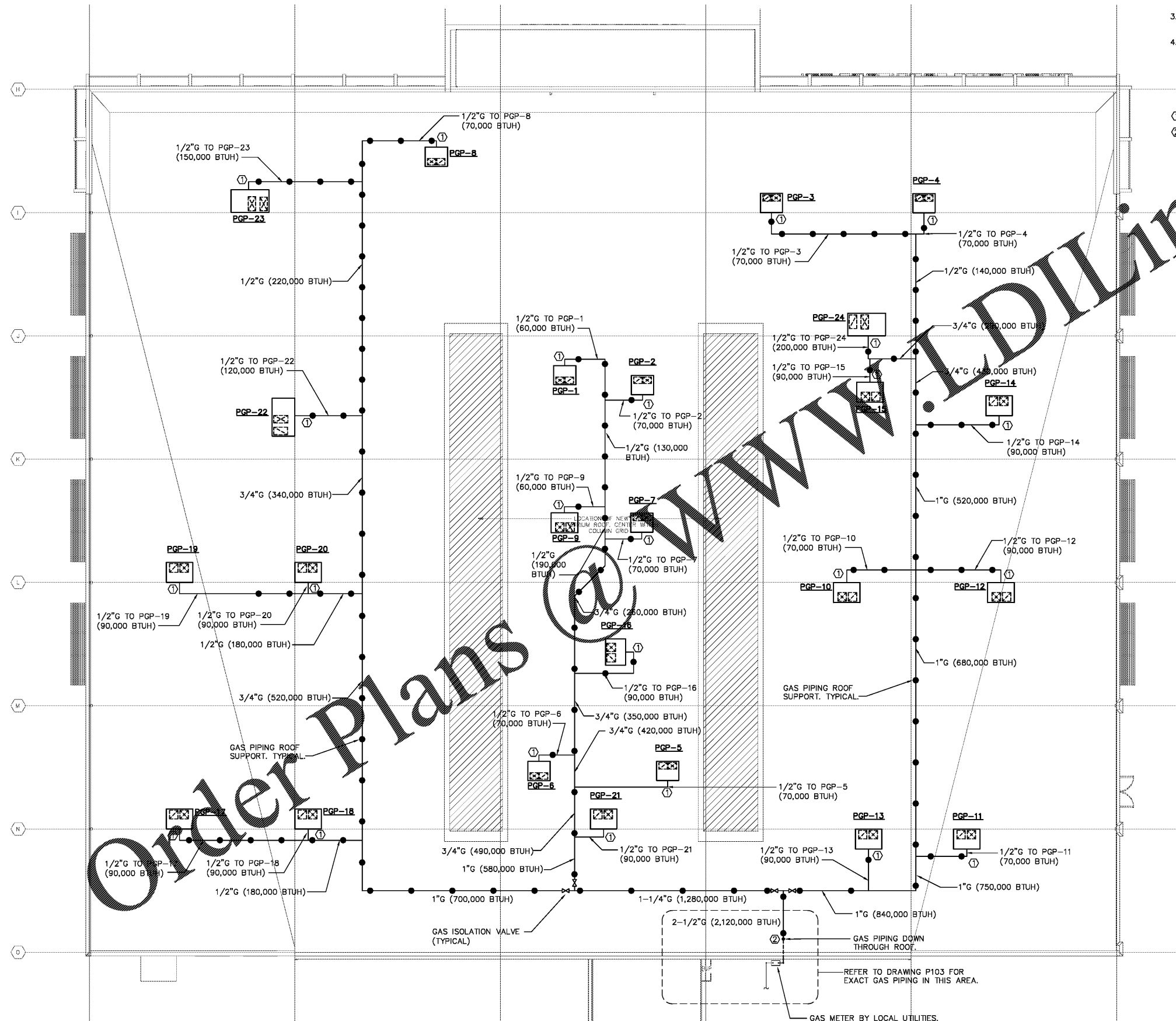


THE OPPORTUNITY CENTER
8570 RIVERS AVE. N. CHARLESTON, SC

SHEET ISSUE:
01/14/2020 Revise Set
01/24/2020 FormB&H Set

PRINCIPAL IN CHARGE: ACT
PROJECT ENGINEER: ACT
DRAWN BY: RAD
SHEET TITLE:
**GAS PIPING
RENOVATION PLAN**
PROJ. NO. MFS 017348.00

SHEET NO.
P104



GAS PIPING RENOVATION PLAN
SCALE: 1/8" = 1'-0"

Order Plans @ www.DIline.com

www.DIline.com