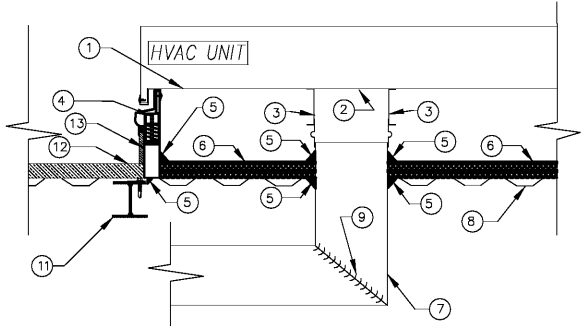


PACKAGE GAS PACK AIR CONDITIONER SCHEDULE										
	MARK	PGP-1	PGP-2,3,4,5	PGP-6,7,8	PGP-9	PGP-10,11	PGP-12 to 21	PGP-22	PGP-23	PGP-24
FAN	SUPPLY AIR - CFM	800	1000	1200	1400	1600	2000	3,000	2,400	4,000
	OUTSIDE AIR - CFM	80	100	120	140	160	200	300	240	400
	EXT. S.P. - IN. W.G.	0.5	0.5	0.5	0.5	0.5	0.5	0.5	0.5	0.5
	BLOWER MOTOR - HP (MIN.)	1/3	1/2	1/2	1/2	3/4	1.0	2.75	2.75	2.75
COOLING	TOTAL CAPACITY - MBTUH	24.6	28.2	37.0	40.5	46.5	58.0	92.0	73.6	117
	SENSIBLE CAPACITY - MBTUH	-	-	-	-	-	-	68.6	58.7	89.6
	ENT. AIR TEMP. - °F db/wb	80.0/67.0	80.0/67.0	80.0/67.0	80.0/67.0	80.0/67.0	80.0/67.0	80.0/67.0	80.0/67.0	80.0/67.0
HEATING	INPUT - MBTUH	60.0	70.0	70.0	60.0	70.0	90.0	150	120	200
	OUTPUT - MBTUH	-	-	-	-	-	-	120	97.2	160
COND.	AMBIENT AIR TEMP. - °F db	95	95	95	95	95	95	95	95	95
	COMPRESSORS - NO.	1	1	1	1	1	1	2	2	2
	COMPR. RLA/FAN MOTOR FLA	12.8/0.54	14.1/0.85	15.4/1.1	16.7/1.51	19.6/1.51	24.4/1.7	15.9/4	14.6/3.5	19.6/2.7
	EER AT ARI	12.0	12.0	12.0	12.0	11.5	11.5	12.6	13.1	12.4
MINIMUM CIRCUIT AMPACITY	19.1	22.6	24.5	28.5	32.0	39.1	42	37	48	
PROT. RTG RECOMMENDED	30	35	40	45	50	60	50	50	60	
ELECTRICAL - V/ø/Hz	208/1/60	208/1/60	208/1/60	208/1/60	208/1/60	208/1/60	208/3/60	208/3/60	208/3/60	
MANUFACTURER	TRANE	TRANE	TRANE	TRANE	TRANE	TRANE	TRANE	TRANE	TRANE	
MODEL NO.	4YCC4024A1060A	4YCC4030A1070A	4YCC4038A1070A	4YCC4042A1060A	4YCC4048A1070A	4YCC4060A1090A	YHC092F3	YHC074F3	YHC120F3	
WEIGHT LBS. (W/SEISMIC CURB)	358	377	374	452	448	476	1500	1400	1900	
NOTES	1 - 9	1 - 9	1 - 9	1 - 9	1 - 9	1 - 9	1 - 9	1 - 9	1 - 9	

- NOTES:
- EXTERNAL STATIC PRESSURE IS FOR DUCTWORK SYSTEM ONLY. FILTERS, COILS AND CASING LOSSES ARE INTERNAL.
 - BELT DRIVEN BLOWERS SHALL BE PROVIDED WITH A SECOND DRIVE SET (PULLEY AND SHEAVES) NECESSARY TO BALANCE THE SYSTEM WITH ACTUAL FIELD CONDITIONS.
 - PROVIDE WITH VFD, SINGLE POINT POWER CONNECTION, UNIT MOUNTED DISCONNECT, MOTORIZED O.A. INTAKE TO OPEN ONLY WHEN THE UNIT IS OPERATING IN THE HEAT OR COOLING MODE.
 - PROVIDE WITH 2" PLEATED, 30% EFFICIENT THROWAWAY FILTERS. FILTERS SHALL BE REPLACEABLE WITHOUT THE NEED FOR ANY TOOLS.
 - PROVIDE WITH LOW AMBIENT CONTROLLER TO OPERATE DOWN TO 20 °F.
 - PROVIDE WITH 0-100% ECONOMIZER, DRY BULB CONTROL, AND BAROMETRIC RELIEF.
 - PROVIDE WITH 14" HIGH SEISMIC/WIND RATED (WHICH EVER IS GREATER) VIBRATION ISOLATION ROOF CURB BY BDR NOISE AND VIBRATION CONTROL, MODEL HUSH CURB/HUSHCORE PLUS. REFER TO DETAIL ON M002. CONTACT DWIGHT LANDRY AT (704) 753-2114 FOR MORE INFORMATION.
 - PROVIDE WITH CONVENIENCE OUTLET.

DUCTLESS SPLIT SYSTEM HEAT PUMP SCHEDULE	
MARK	AHU-1 & 2
SUPPLY AIR - CFM	635-775
ELECTRICAL - V/ø/Hz	208/1/60
APPROXIMATE WEIGHT - LB.	46
TOTAL CAPACITY - MBH	24.0
HIGH TEMP. HEATING-MBH @ ARI	29.0
MANUFACTURER	MITSUBISHI
SYSTEM TYPE-TONS	CEILING CASSETTE-2.0
INDOOR UNIT MODEL NO.	PLA-A24EA7
MARK	HP-1 & 2
AMBIENT AIR TEMPERATURE	95
COMPRESSORS - NO.	1
UNIT RLA	7.0
ELECTRICAL - V/ø/Hz	208/1/60
MINIMUM CIRCUIT AMPACITY	19
PROT. RTG. RECMD. (AMPS)	25
APPROXIMATE WEIGHT - LB.	153
SYSTEM NOMINAL CAPACITY - TONS	2.0
SYSTEM SEER AT ARI	24
MANUFACTURER	MITSUBISHI
HEAT PUMP MODEL NO.	PUZ-A24NHA7
NOTES	1,2,3,4

- NOTES:
- FIELD MOTOR SPECIFICATIONS APPROVED EQUAL.
 - PROVIDE WITH INTEGRAL CONDENSATE PUMP - 120V.
 - PROVIDE WALL AND HARD WIRED 7-DAY PROGRAMMABLE THERMOSTAT.
 - PROVIDE WITH SINGLE POINT ELECTRICAL CONNECTION.
- INDOOR UNIT RECEIVES POWER FROM OUTDOOR UNIT THROUGH FIELD-SUPPLIED INTERCONNECTING WIRING.



- BY RTU UNIT MANUFACTURER
- RTU Base
 - SA/RA Unit Openings
- BY ACoustICAL MANUFACTURER
- Integral Curb Duct Supports
 - 2\"/>
- BY HVAC CONTRACTOR
- Duct Work
 - Roof Deck Flashed to within 1/2\"/>
- BY GENERAL CONTRACTOR
- Building Steel
 - Full-Depth Roof or Concrete
 - Insulation and Cant Strip
 - Curb Slope requirements where applicable

RTU NOISE REDUCTION SYSTEM

HUSHCORE™ PLUS™ System Model **HSIC-DS-52** shall be a 2\"/>

The HUSH CURB™ shall have a field installed in-curb **DS-52** sound package to radiate noise. Materials shall meet Class "A" per ASTM E84 for flammability. The multi-layer composite system shall have a nominal installed height of 8\"/>

PERFORMANCE

To assure optimized aerodynamic and acoustic performance as well as proper integration and coordination of the final installation, the HUSHCORE™ System shall be supplied by the rooftop unit manufacturer as part of a turnkey package. The HUSH CURB™ shall provide minimum 85% vibration isolation efficiency. HUSHCORE™ Model **HIC-DS-52** In-Curb Acoustical Treatment Performance shall be tested in accordance with procedure ASTM E-90-10. The assembly shall be rated at not less than STC-52 with 1/3 octave performance values as listed below for sound radiation through the deck inside the curb.

HUSHCORE In-Curb Composite - (Transmission Loss) in accordance with ASTM E-90-10																						
Freq. (Hz)	80	100	125	160	200	250	315	400	500	630	800	1K	1.25K	1.6K	2K	2.5K	3.15K	4K	5K	6.3K	8K	STC
Transmiss. Loss (dB)	26	27	33	32	35	42	45	45	50	56	59	60	62	63	64	65	67	71	74	78	80	52

ROOFTOP UNIT NOISE CONTROL CURB DETAIL

