

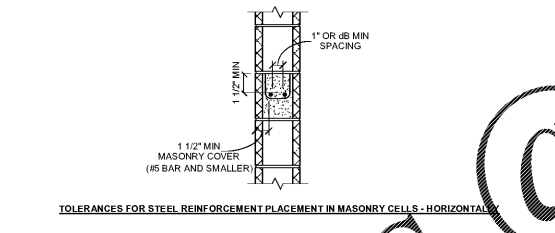
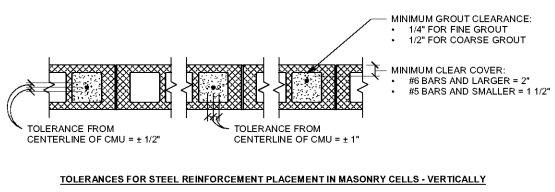
**1 STRUCTURAL MASONRY WALL DETAILS**  
N.T.S.

**2 PLACEMENT OF REINFORCEMENT**  
N.T.S.

**WALL CONSTRUCTION**  
N.T.S.

**MINIMUM LAP SPLICE FOR REINFORCING BARS CENTERED IN WALL (VERTICAL AND HORIZONTAL)**

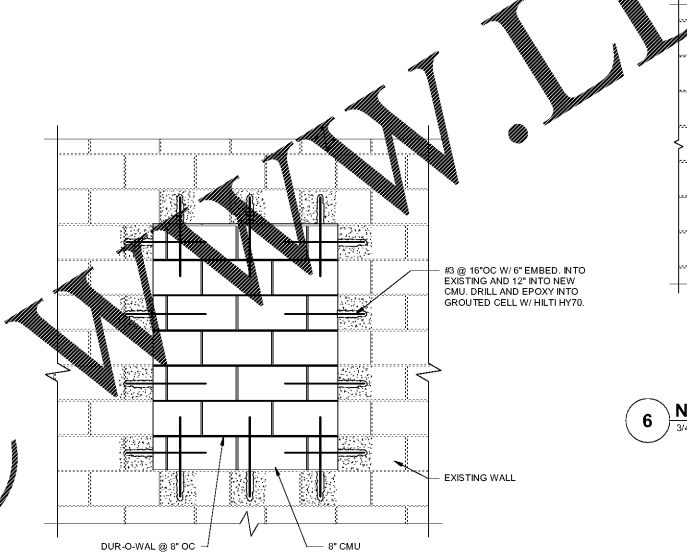
BAR SIZE	6" CMU		8" CMU		12" CMU	
	STRAIGHT SPLICE	HOOK SPLICE	STRAIGHT SPLICE	HOOK SPLICE	STRAIGHT SPLICE	HOOK SPLICE
#3	12"	12"	12"	12"	12"	12"
#4	16"	12"	13"	12"	12"	12"
#5	28"	20"	20"	12"	13"	12"
#6	54"	45"	39"	30"	25"	16"
#7	NP	NP	53"	42"	34"	23"
#8	NP	NP	72"	59"	51"	38"
#9	NP	NP	82"	68"	66"	52"



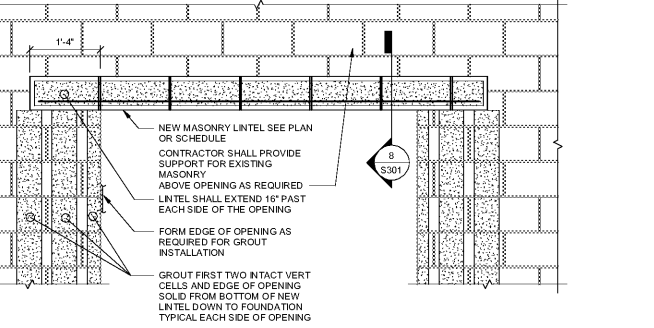
**LAP SCHEDULE NOTES**

- TABLE IS BASED OFF OF COMPRESSIVE STRENGTH OF MASONRY (fm) EQUAL TO 1,900 PSI AND YIELD STRENGTH OF REINFORCING STEEL EQUAL TO 60,000 PSI
- "NP" DENOTES NOT PERMITTED.
- FOR EPOXY-COATED REINFORCING, MULTIPLY NUMBERS IN TABLE ABOVE BY 1.5
- REINFORCEMENT SHALL BE PLACED IN THE CENTER OF THE CELL AND WITHIN ALLOWABLE TOLERANCES SET FORTH BY GOVERNING CODE
- THE TABLE ABOVE APPLIES TO ONLY ONE VERTICAL BAR PER CELL AND REBARS SPICED BY CONTACT. NON-CONTACT SPLICES SHALL NOT BE SPACED TRANSVERSELY FURTHER APART THAN ONE-FIFTH THE REQUIRED LAP LENGTH NOR MORE THAN 8"
- STANDARD HOOKS ARE CONSIDERED TO DEVELOP AN EQUIVALENT EMBEDMENT LENGTH, EQUAL TO 13d MEASURED FROM THE POINT OF THE TANGENCY AT START OF HOOK BEND. IF CONFORMING HOOK DIMENSIONS AND DETAILING ARE PROVIDED, 'STRAIGHT SPLICE' LENGTHS MAY BE REDUCED TO 'HOOK SPLICE' LENGTHS.
- MECHANICAL SPLICES MAY BE USED AT CONTRACTOR'S OPTION. MECHANICAL SPLICES SHALL DEVELOP, IN TENSION, AT LEAST 125% OF THE SPECIFIED YIELD STRENGTH (Fy) OF THE SPLICED BAR. SUBMIT MECHANICAL SPLICE DEVICE TO ENGINEER OF RECORD FOR APPROVAL. WHERE MECHANICAL SPLICES ARE USED STAGGER ADJACENT SPLICES BY 24" ON CENTER.

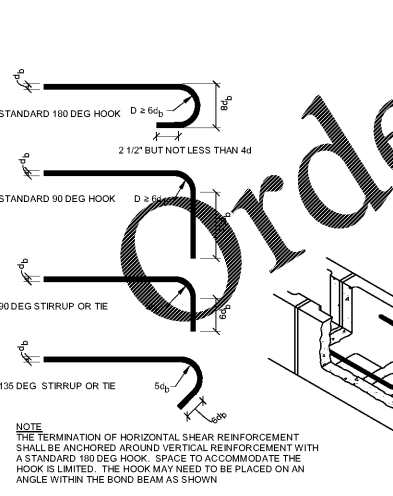
**4 TOLERANCES FOR STEEL REINFORCEMENT PLACEMENT IN MASONRY CELLS**  
1" = 1'-0"



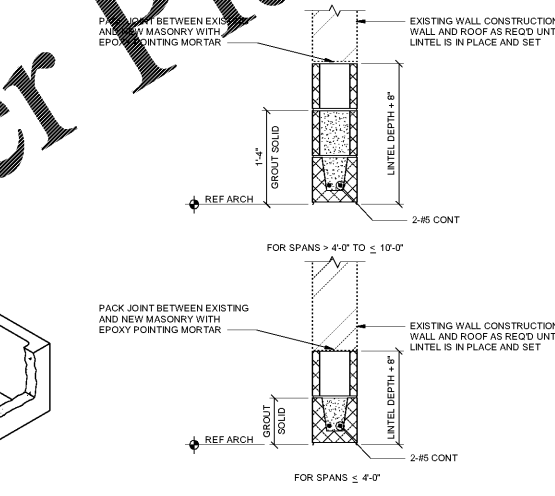
**5 EXISTING CMU OPENING INFILL DETAIL**  
3/4" = 1'-0"



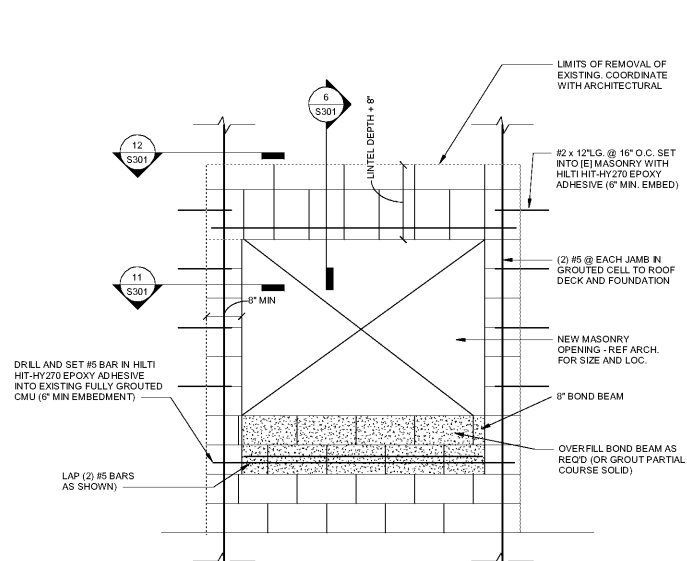
**6 NEW OPENING IN MASONRY WALL**  
3/4" = 1'-0"



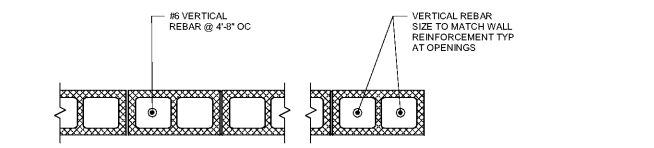
**7 STANDARD HOOKS AND BENDS**  
1 1/2" = 1'-0"



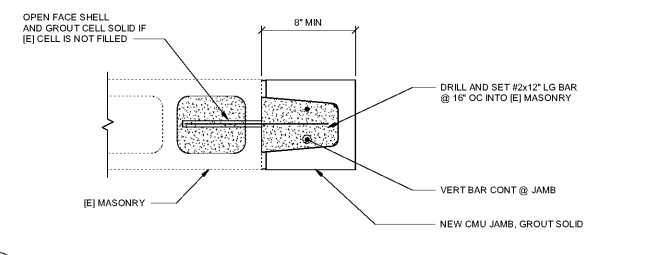
**8 CMU LINTEL SECTION**  
1" = 1'-0"



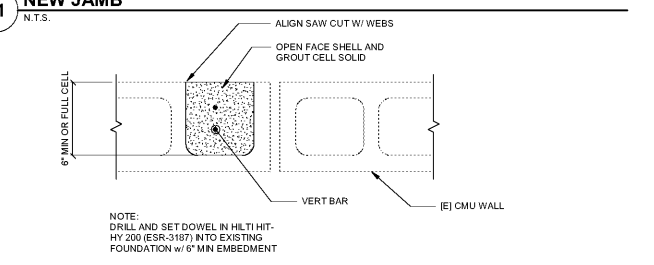
**9 NEW CMU OPENING**  
1" = 1'-0"



**10 VERTICAL REINFORCEMENT LAYOUT**  
1" = 1'-0"



**11 NEW JAMB**  
N.T.S.



**12 NEW VERTICAL REINFORCING - MID WALL**  
N.T.S.

**mc milian pazdan smith ARCHITECTURE**

BRITT, PETERS & ASSOCIATES

REGISTERED PROFESSIONAL ARCHITECTS

1000 W. BROADWAY, SUITE 2000  
CHARLESTON, SC 29403  
TEL: 771.233.3333  
WWW.MCMILIANPAZDANSMITH.COM

REGISTERED PROFESSIONAL ENGINEERS

1000 W. BROADWAY, SUITE 2000  
CHARLESTON, SC 29403  
TEL: 771.233.3333  
WWW.MCMILIANPAZDANSMITH.COM

DON OGLESBY

THE OPPORTUNITY CENTER

8570 REVERE AVE. N. CHARLESTON, SC

SHEET ISSUE  
Jan. 24, 2020 ISSUED FOR PERMIT

PRINCIPAL IN CHARGE: JSR  
PROJECT ARCHITECT: JSR  
DRAWN BY: TB

SHEET TITLE: SECTIONS & DETAILS

SHEET NO. PROJ. NO. 017349.00

**S301**