

THE OPPORTUNITY CENTER  
8570 RIVERS AVE. N. CHARLESTON, SC

SHEET ISSUE:  
Revision Number Revision Date Revision Description  
01/23/2020 Permit Set

PRINCIPAL IN CHARGE: PROJECT ARCHITECT, DRAWN BY:  
APPROVER: CHECKER, AUTHORITY:

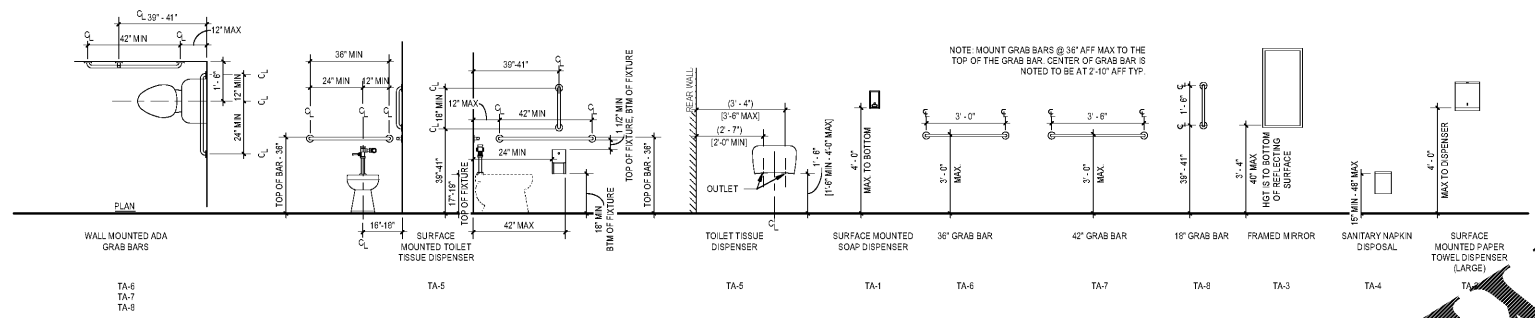
SHEET TITLE:  
ENLARGED TOILET PLANS

PROJ. NO. 017348.00

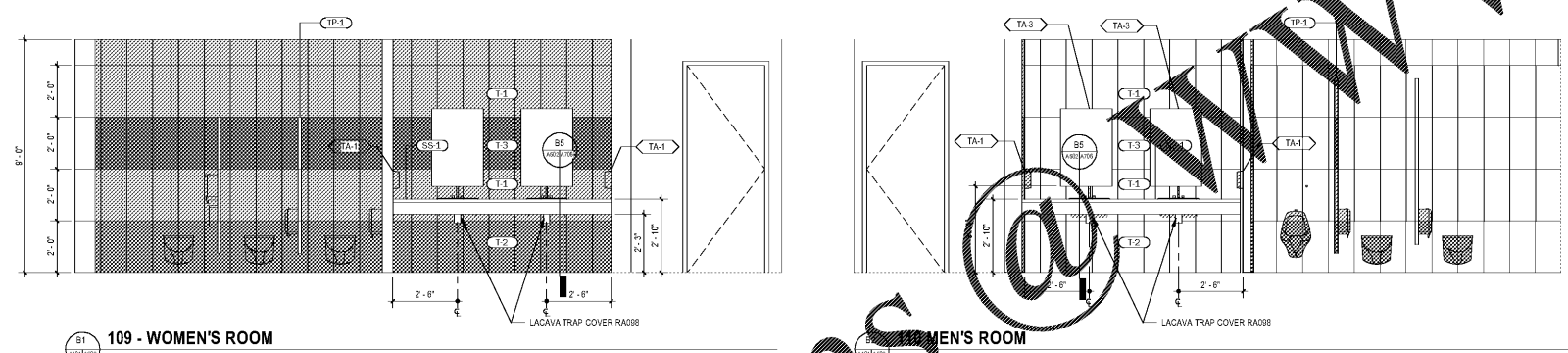
TOILET ACCESSORY SCHEDULE

TAG	DESCRIPTION	MANUFACTURER / MODEL NO.	FINISH / COLOR
TA-1	SURFACE MOUNTED SOAP DISPENSER	BOBRICK / B-2013	STAINLESS STEEL #4 SATIN
TA-2	PAPER TOWEL DISPENSER & DISPOSAL	BOBRICK / B-3844	STAINLESS STEEL #4 SATIN
TA-3	TEMPERED GLASS MIRROR W/ WELDED FRAME (24X36")	BOBRICK / B-165 2436	
TA-4	SANITARY NAPKIN DISPOSAL	BOBRICK / B-270	STAINLESS STEEL #4 SATIN
TA-5	SIDE-BY-SIDE DOUBLE ROLL BATH-ROOM TISSUE DISPENSER	BOBRICK / B-2892	PLASTIC, TRANSLUCENT SMOKE
TA-6	36" ADA GRAB BAR	BOBRICK / B-5806.99 x 36	STAINLESS STEEL 18GA, PEENED, TYPE 304, SATIN
TA-7	42" ADA GRAB BAR	BOBRICK / B-5806.99 x 42	STAINLESS STEEL 18GA, PEENED, TYPE 304, SATIN
TA-8	18" ADA GRAB BAR (VERTICAL)	BOBRICK / B-5806.99 x 18	STAINLESS STEEL 18GA, PEENED, TYPE 304, SATIN

- ACCESSORY GENERAL NOTES
- ALL TOILET ACCESSORIES SHALL BE INSTALLED TO COMPLY WITH ADA 2010 AND ICC/ANSI A117.1 - 2017 HEIGHT AND ACCESS REQUIREMENTS.
  - CONTRACTOR SHALL PROVIDE 16 GA METAL STRAPPING IN WALLS AS REQUIRED FOR ALL TOILET ACCESSORY INSTALLATION.
  - REFER TO ENLARGED RESTROOM PLANS AND INTERIOR ELEVATIONS FOR TOILET ACCESSORY QUANTITIES.
  - CONTRACTOR TO VERIFY MOUNTING HEIGHT REQUIREMENTS FOR BARRIER FREE DESIGN WITH EQUIPMENT CUT SHEETS PRIOR TO INSTALLATION OF ACCESSORIES.

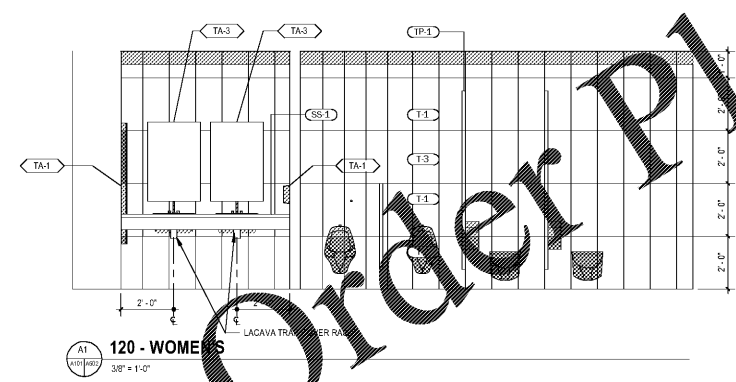


STANDARD DIMENSIONS

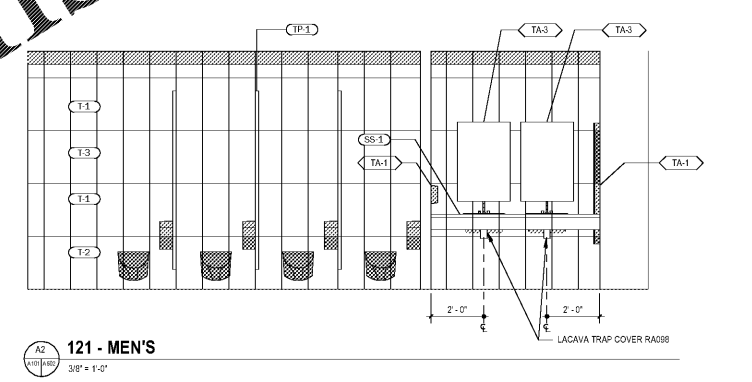


109 - WOMEN'S ROOM  
3/8" = 1'-0"

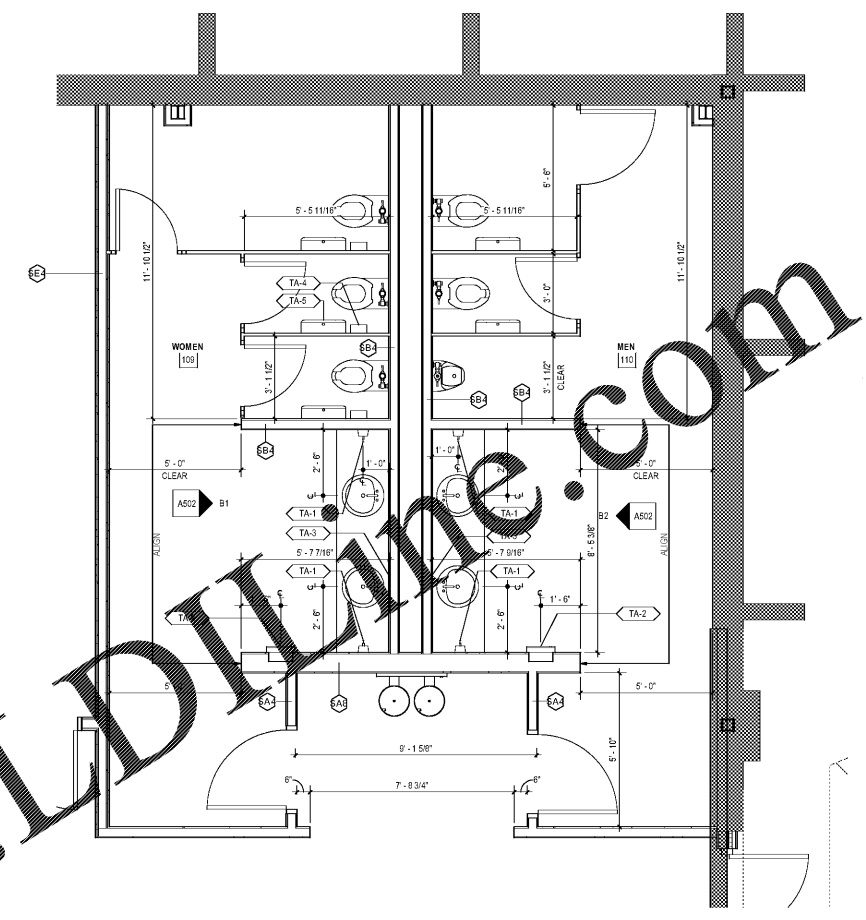
110 - MEN'S ROOM  
3/8" = 1'-0"



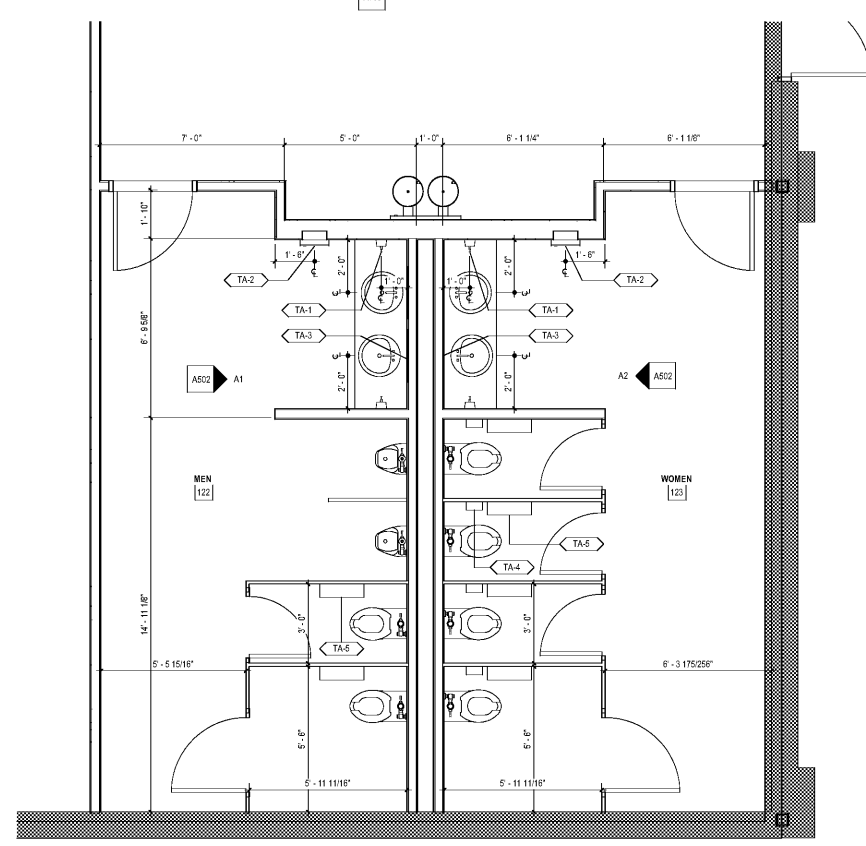
120 - WOMEN'S ROOM  
3/8" = 1'-0"



121 - MEN'S ROOM  
3/8" = 1'-0"



109 WOMEN & 110 MEN ENLARGED PLAN  
3/8" = 1'-0"



122 WOMEN & 123 MEN ENLARGED PLAN  
3/8" = 1'-0"

SHEET NO.  
A502