

SHEET ISSUE

Revision Number	Revision Date	Revision Description
01/23/2020	Permit Set	

PRINCIPAL IN CHARGE:
PROJECT ARCHITECT:
DRAWN BY:
CHECKER:
AUTHOR:

SHEET TITLE:
FLOOR FINISH PLAN

PROJ. NO. 017348.00

SHEET NO.

A501

FINISH NOTES

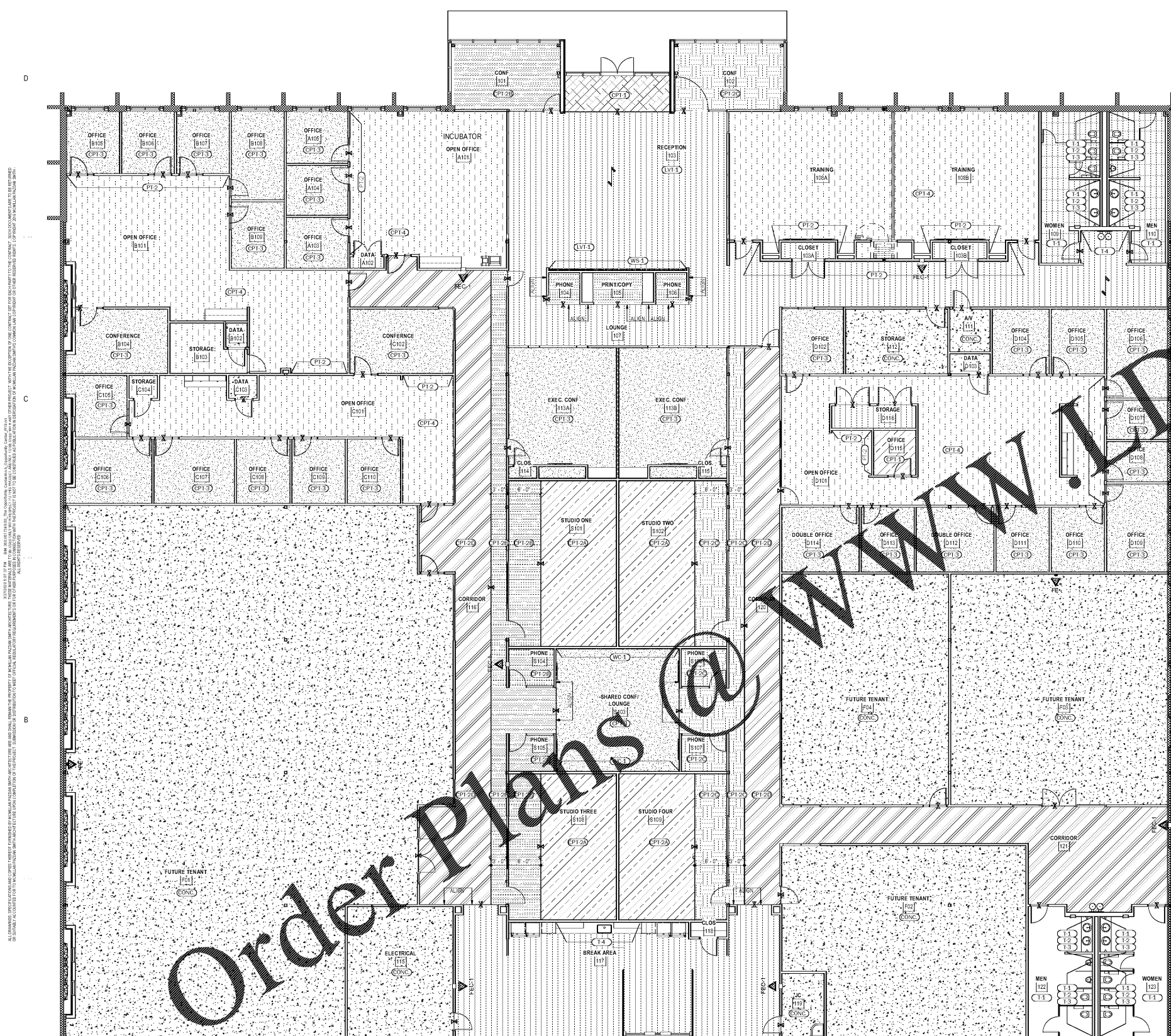
- SEE FINISH PLANS FOR EXACT FINISH LOCATIONS
- REFER TO ALL MFG PROVIDED INSTALLATION SPECIFICATIONS WHERE NOTED IN COMMENTS
- ALL WALLS TO BE PAINTED PT-1 U.N.O.
- ALL BASE TO BE RB-1 U.N.O.
- NEW FINISHES ARE AS NOTED. ALL MATERIALS TO BE PURCHASED DIRECTLY FROM THE MANUFACTURER ONLY. NO SUBSTITUTES SOURCES OR PRODUCTS ALLOWED WITHOUT WRITTEN AUTHORIZATION FROM THE ARCHITECT OR THE INTERIOR DESIGNER.
- CONTRACTOR TO NOTIFY ARCHITECT OR DESIGNER OF ANY DISCREPANCIES THAT MAY AFFECT APPLICATION OF FINISHES, INCLUDING DISCONTINUED OR DELAYED MATERIALS PRIOR TO ANY PROCEEDINGS. NO SUBSTITUTIONS ALLOWED WITHOUT PRIOR ARCHITECT APPROVAL.
- CONTRACTOR IS RESPONSIBLE FOR FIELD VERIFYING ALL DIMENSIONS. NOTIFY INTERIOR DESIGNER OF ANY DISCREPANCIES.
- CONTRACTOR IS RESPONSIBLE FOR MAINTAINING CONDITION OF FINISHES SCHEDULED TO REMAIN. IN CASE ANY SUCH FINISHES BE DAMAGED DURING CONSTRUCTION, PATCH AND REPAIR TO THEIR ORIGINAL CONDITION.
- ALL MATERIALS TO BE INSTALLED WITH METHODS AND PRODUCTS RECOMMENDED BY THE MANUFACTURER.
- CONTRACTOR TO COORDINATE LOCATION OF GROMMETS IN MILLWORK WITH ARCHITECT OR INTERIOR DESIGNER PRIOR TO DRILLING. GROMMET COLOR TO MATCH SURFACE IN WHICH THEY APPEAR. U.N.O.
- INSTALLER SHALL EXAMINE CONDITIONS OF SURFACES ON WHICH NEW FINISHES ARE TO BE INSTALLED. CONTRACTOR TO NOTIFY DESIGNER IMMEDIATELY OF ANY DEVIATIONS. BEGINNING OF WORK SHALL CONSTITUTE ACCEPTANCE OF SURFACES AS SATISFACTORY. PREPARE ALL SURFACES SCHEDULED TO RECEIVE NEW FINISHES TO BE SMOOTH, EVEN AND FREE OF IMPERFECTIONS.
- CONTRACTOR TO APPROVE ALL NEW FINISHES AGAINST DEFECTS. IF ANY DEFECTS IN MATERIALS ARE FOUND, DO NOT PROCEED WITH INSTALLATION. NOTIFY THE MANUFACTURER AND DESIGNER IMMEDIATELY.
- EXTEND FINISHES INTO CLOSET U.N.O.
- STAIN ALL STAIN-GRADE DOORS AND FRAMES PER SCHEDULE. PAINT HOLLOW METAL AND PAINT GRADE DOORS AND FRAMES SEMI-GLOSS. U.N.O.
- ALL WALLS TO BE PAINTED EGGHELL FINISH ALL SOFFITS, HEADERS AND CEILING TO BE PAINTED FLAT FINISH ALL PAINT GRADE MILLWORK AND TRIM TO BE PAINTED SEMI-GLOSS FINISH ALL STAINED MILLWORK TO BE SATIN U.N.O.
- ALL ACCESS PANELS, GRILLS, ETC ON WALL OR CEILING IN SCORE, PRIME AND PAINTED TO MATCH ADJACENT SURFACE COLORS.
- SEE RELATED CEILING PLANS FOR DETAILS ON ALL AREAS WITH GYPOSOUM BOARD CEILING AND FINISHES.
- ALL WALLS IN JANITOR CLOSETS AND RESTROOMS SEMI-GLOSS FINISH U.N.O.
- CONSULT WITH DESIGNER ON ANY WALL OR FLOOR WITH TRANSITION ISSUE PRIOR TO ANY WORK.
- EPOXY GROUT TO BE USED WITH TILE THROUGHOUT SCOPE OF WORK. ABOUT RELEASE IS TO BE USED ON EXPOSED SURFACES TO RESIST EPOXY GROUT U.N.O.
- SEE CARPET LAYOUT DIAGRAM TO ORDER. PREPARE ORDERING THE MATERIALS AND DOING THE WORK.
- ALL FLOORING TRANSITIONS AT WALLS SHALL OCCUR UNDER CENTERLINE OF DOOR U.N.O.
- PROVIDE FLOORING TO MEET NEW FLOORING MEET EXISTING FLOORING AT SAME HEIGHT. PROVIDE FLOOR LEVELING BETWEEN LVT TO OTHER EXISTING MATING MATERIALS TO MEET AT SAME HEIGHT WITHOUT A CARPET TRUG DIAGRAM TO ORDER. PREPARE ORDERING THE MATERIALS AND DOING THE WORK.
- CAULK SILICON AT ALL WORK WHERE IT MEETS WALL, CAULK SILICON WHEREVER THERE IT MEETS DOOR/WINDOW FRAMES. CAULK VCT OR STY AT DOOR FRAMES.
- CONTRACTOR TO USE EPOXY FLOOR ADHESIVE WHERE NOTED ON PLANS.
- ANY CONCRETE STAIN COLORS SPECIFIED ARE TO BE SWATCH TESTED IN AN UNOCCUPIED AREA, DETERMINED BY THE DESIGNER. FINAL APPROVAL BY DESIGNER REQUIRED BEFORE PROCEEDING TO STAIN/SEAL ENTIRE FLOOR.
- ANY DISCREPANCIES BETWEEN THE FLOOR FINISH PLAN AND FINISH SCHEDULE ARE TO BE BROUGHT TO THE ATTENTION OF THE ARCHITECT PRIOR TO MOVING FORWARD WITH THE ORDERING OF MATERIALS.
- FINISH FLOOR PLAN HATCH PATTERNS DENOTE FINISH SELECTIONS. THE FIELD SIZE AND DIRECTION OF THE PATTERN HAS NO REFERENCE TO THE DESIGN INTENT. PLEASE REFERENCE DIRECTIONAL SYMBOLS ON THE FINISH FLOOR PLAN TO DETERMINE THE DIRECTION OF ANY GIVEN MATERIAL, AS WELL AS THE FINISH LEGEND FOR FIELD SIZES.

FINISH LEGEND

PLASTIC LAMINATE	CARPET
<p>PL-1 MFG: NEWMAR PRODUCT: WHISPERING WIND WX4600-VE NOTES: USE MATCHING TEKNAFORM EDGEBANDING</p> <p>PL-2 MFG: NEWMAR PRODUCT: COPPER FUSION 2 FN1002T NOTES: USE MATCHING TEKNAFORM EDGEBANDING</p> <p>PL-3 MFG: NEWMAR PRODUCT: DOVE GRAY 8603-T NOTES: USE MATCHING TEKNAFORM EDGEBANDING</p> <p>PL-4 MFG: NEWMAR PRODUCT: EASY ELEGANCE VAS02-T NOTES: USE MATCHING TEKNAFORM EDGEBANDING</p>	<p>CPT-1 MFG: MLLIKEN SIZE: 250X11M VERTICAL ASHLAR PRODUCT: OBEK CUTX DR FT COLOR: TSD NOTES: INSTALL WITH COORDINATING MFG PRODUCT LINE ACCENT TILE PER MFG RENDERING AND INSTALL DIAGRAM</p> <p>CPT-2 MFG: MLLIKEN SIZE: 11M VERTICAL ASHLAR PATTERN PRODUCT: EDGE LIT COLOR: 2A-ATMOSPHERE EDG141-201-46 2B-SLACK LIGHT EDG133-229 NOTES: SEE MFG RENDERING AND INSTALL DIAGRAM</p> <p>CPT-3 MFG: MLLIKEN SIZE: 250M X 1M VERTICAL ASHLAR PATTERN PRODUCT: MAJOR FREQUENCY ONE COLOR: VINDIS168 PER FIVE NOTES: SEE MFG RENDERING AND INSTALL DIAGRAM</p> <p>CPT-4 MFG: MLLIKEN SIZE: 250X11M VERTICAL ASHLAR PRODUCT: LIVE CIRCUIT COLOR: CURRENT CUR 14 OCTANE NOTES: INSTALL WITH COORDINATING MFG PRODUCT LINE ACCENT TILE PER MFG RENDERING AND INSTALL DIAGRAM</p>
SOLID SURFACING	RESILIENT FLOOR
<p>SS-1 MFG: KRION COLOR: ANTICO BIANCO T103 NOTES:</p>	<p>LVT-1 MFG: PATCRAFT SIZE: 7X12" PRODUCT: ADESA 1424V COLOR: TREELINE 0716 NOTES:</p>
PAINT	PORCELAIN TILE
<p>PT-1 MFG: SHERWIN WILLIAMS COLOR: TSD</p> <p>PT-2 MFG: SHERWIN WILLIAMS COLOR: TSD</p> <p>PT-3 MFG: SHERWIN WILLIAMS COLOR: TSD</p> <p>PT-4 MFG: SHERWIN WILLIAMS COLOR: TSD</p>	<p>T-1 MFG: MRAGE USA SIZE: 12" X 24" PRODUCT: SWORD W001 COLOR: WELD NOTES: INSTALL TO MINIMIZE GROUT JOINTS.</p> <p>T-2 MFG: MRAGE USA SIZE: 12" X 24" PRODUCT: HAMMER W002 COLOR: WELD NOTES: INSTALL TO MINIMIZE GROUT JOINTS.</p> <p>T-3 MFG: MRAGE USA SIZE: 12" X 24" PRODUCT: FORGE W003 COLOR: WELD NOTES: INSTALL TO MINIMIZE GROUT JOINTS.</p> <p>T-4 MFG: SOHO STUDIO CORP. SIZE: 3X12" PRODUCT: MASA COLOR: BIANCO INSTALL: BIANCO ORIENTATION STACK BOND; CENTER VERTICALLY AND HORIZONTALLY</p>
CEILING TILE & GRID	TOILET PARTITIONS
<p>ACT-1 MFG: ARMSTRONG STYLE: ULTIMA SLHOUETTE PRODUCT: BEVELED TEGULAR EDGE FOR 916" GRID FACE COLOR: WHITE RATINGS: CLASS A</p> <p>ACT-2 MFG: ARMSTRONG STYLE: OPTIMA CREATE PRODUCT: BEVELED TEGULAR EDGE FOR 916" GRID FACE COLOR: CUSTOM COLOR - TSD RATINGS: CLASS A</p>	<p>TP-1 MFG: PRIVADA TOILET PARTITIONS COLOR: TSD</p>
G-1	CONCRETE
<p>G-1 MFG: ARMSTRONG STYLE: SURFACING 916" GRID PRODUCT: MATCH TILE COLOR RATINGS: GRID SYSTEM TO BE USED ON ALL ACT SYSTEMS UNLESS NOTED PER SEMCO REQUIREMENTS ASTM C636/638</p>	<p>CONC. SEALED CONCRETE</p>
WALL BASE & TRANSITION STRIPS	SPECIALTY INSTALLATIONS
<p>B-1 MFG: JOHNSONITE STYLE: MANDALAY SIZE: 6" COLOR: TSD COMMENT: INSTALL B-1 IN ALL PUBLIC SPACES AND AMENITY</p> <p>B-2 MFG: JOHNSONITE STYLE: TRADITIONAL COVE SIZE: 6" COLOR: TSD COMMENT: INSTALL B-2 IN ALL ANCHOR TENANT SPACES, INCUBATOR SPACE AND STUDIO SPACES; FUTURE TENANT SPACES RECEIVE NO WALL BASE</p> <p>B-3 MFG: MRAGE USA SIZE: 6" X 12" COVE BASE PRODUCT: WELD COLOR: SWORD W001</p>	<p>WS-1 WOOD SLAT WALL 2X4 VERTICAL, WOOD MEMBERS WITH BRANDING CUT OUT. PAINT WALL AND MEMBERS BEYOND.</p>
AREAS	TOILET PARTITIONS
<p>FLOORING</p> <p>CPT-1 CPT-2C LVT-1 CPT-2 CPT-3 SC-1 CPT-2B CPT-4</p>	<p>CONC. SEALED CONCRETE</p>

CONTACT: Kimberly Gray, Palmetto Tile Commercial/Architectural Sales Representative
E-MAIL: kimbry@palmetto.com PHONE: 803-315-7476

CONTACT: Kimberly Gray, Palmetto Tile Commercial/Architectural Sales Representative
E-MAIL: kimbry@palmetto.com PHONE: 803-315-7476



1 FLOOR FINISH PLAN
1/8" = 1'-0"