

THE OPPORTUNITY CENTER
8570 RIVERS AVE. N. CHARLESTON, SC

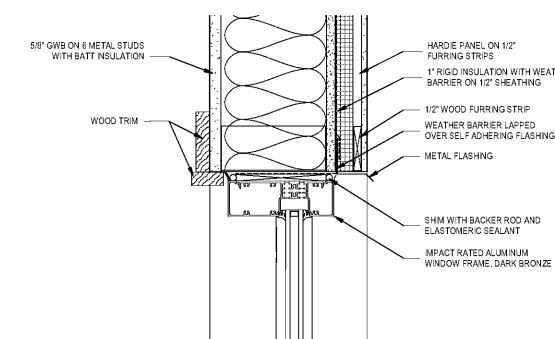
SHEET ISSUE

Revision Number	Revision Date	Revision Description

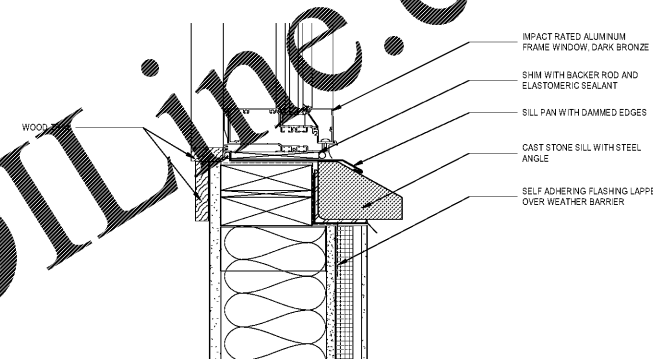
PRINCIPAL IN CHARGE: PROJECT ARCHITECT
DRAWN BY:
SHEET TITLE:
WINDOW C PARTIAL ELEVATION AND SECTION
017348.00

SHEET NO.

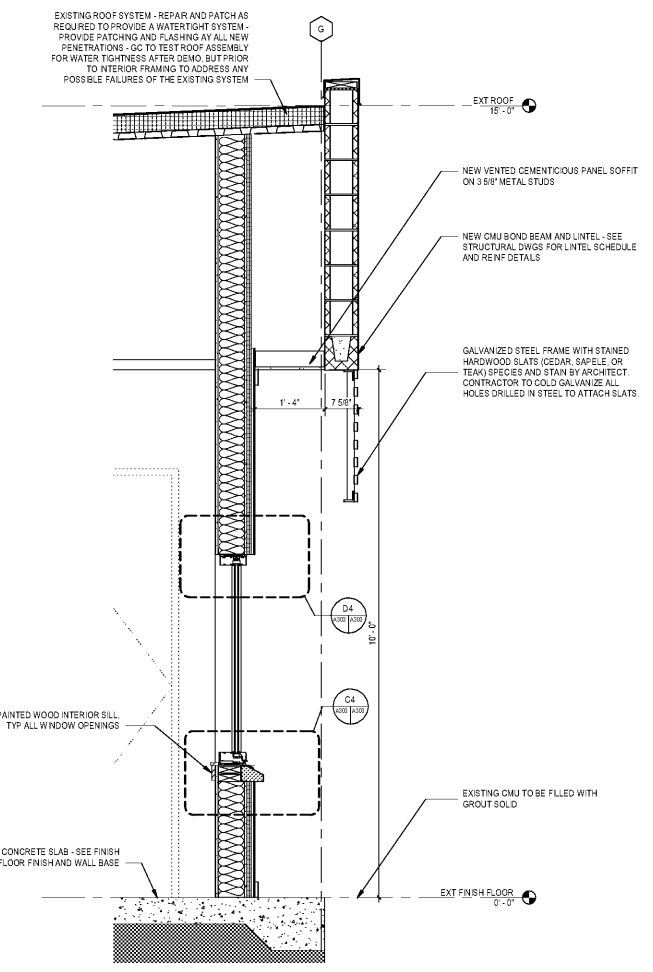
A303



WINDOW C - HEAD DETAIL
3/4\"/>



WINDOW C - SILL DETAIL
3/4\"/>

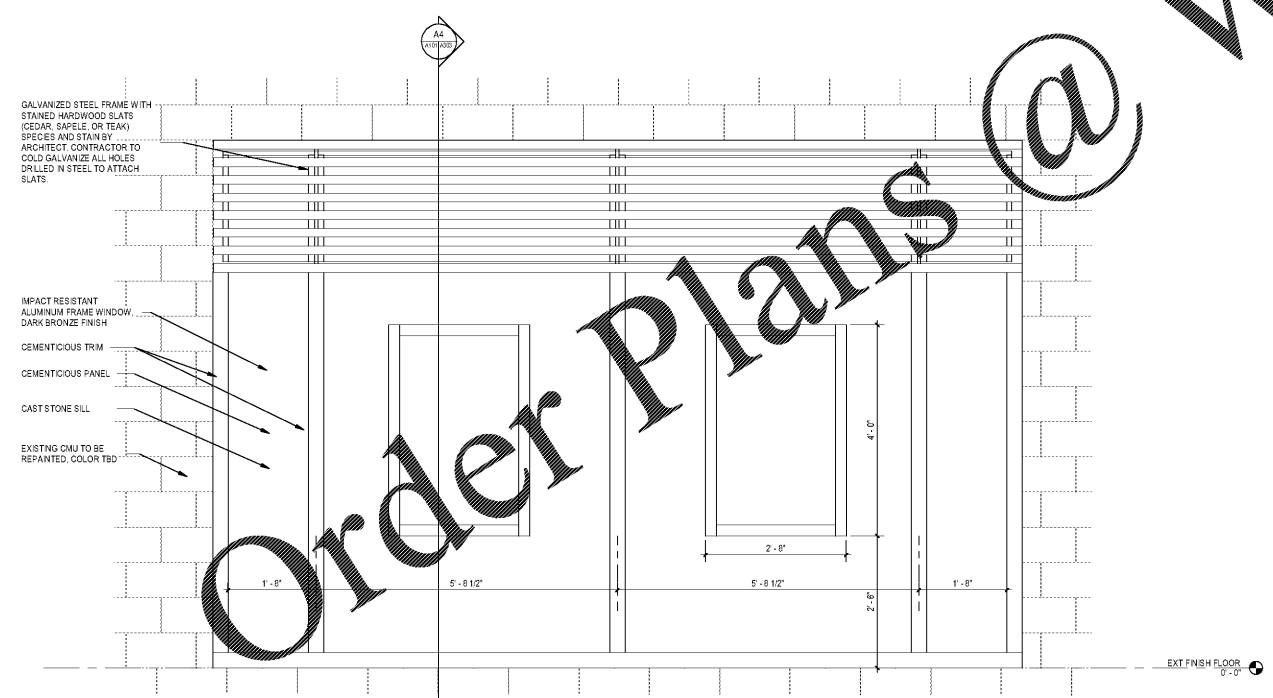


EXTERIOR WALL SECTION
3/4\"/>



REMOVE EXISTING SHEET PLASTIC BARRIER AND CLEAN OUT EXISTING CMU CORES. FILL CORES SOLID WITH GROUT AND PAINT CMU

EXISTING CONDITIONS
1 1/2\"/>



ELEVATION - WINDOW C
3/4\"/>

ALL DIMENSIONS UNLESS OTHERWISE NOTED. FINISHES AND MATERIALS TO BE DETERMINED BY THE ARCHITECT. THE ARCHITECT'S RESPONSIBILITY IS TO PROVIDE A COMPLETE SET OF DRAWINGS FOR THE CONTRACTOR TO CONSTRUCT THE PROJECT. THE CONTRACTOR SHALL BE RESPONSIBLE FOR OBTAINING ALL NECESSARY PERMITS AND FOR VERIFYING THE EXISTING CONDITIONS. THE ARCHITECT'S OFFICE SHALL NOT BE RESPONSIBLE FOR THE ACCURACY OF THE INFORMATION PROVIDED BY THE CONTRACTOR OR FOR THE RESULTS OF ANY TESTS OR INSPECTIONS. THE CONTRACTOR SHALL BE RESPONSIBLE FOR OBTAINING ALL NECESSARY PERMITS AND FOR VERIFYING THE EXISTING CONDITIONS. THE ARCHITECT'S OFFICE SHALL NOT BE RESPONSIBLE FOR THE ACCURACY OF THE INFORMATION PROVIDED BY THE CONTRACTOR OR FOR THE RESULTS OF ANY TESTS OR INSPECTIONS.

www.LDILine.com
 Order Plans @