

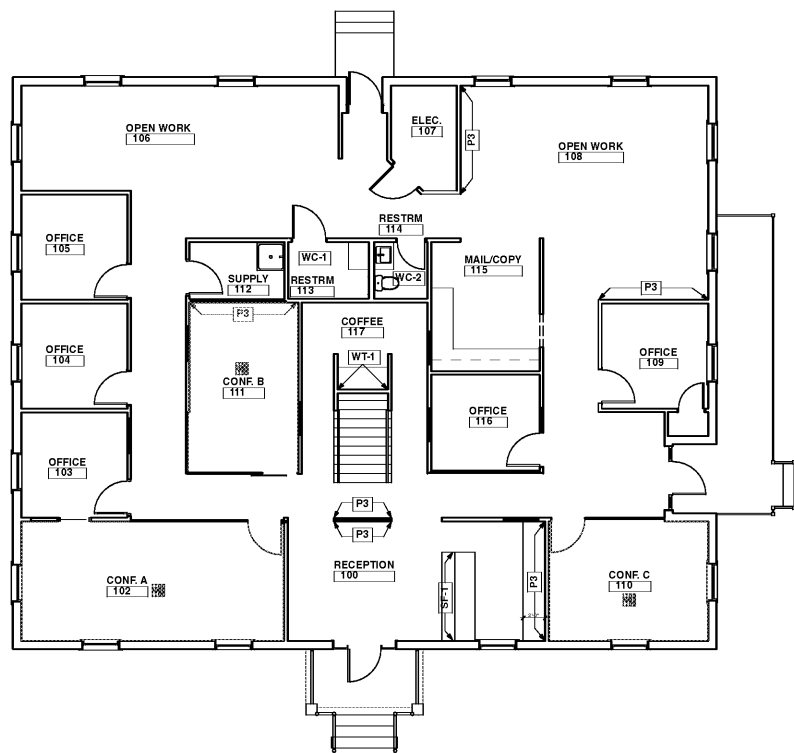
PROJECT TITLE
MCLEOD & MURDOCK

6004 Evans Town Center Blvd
Evans, GA 30809

WALL FINISH PLANS

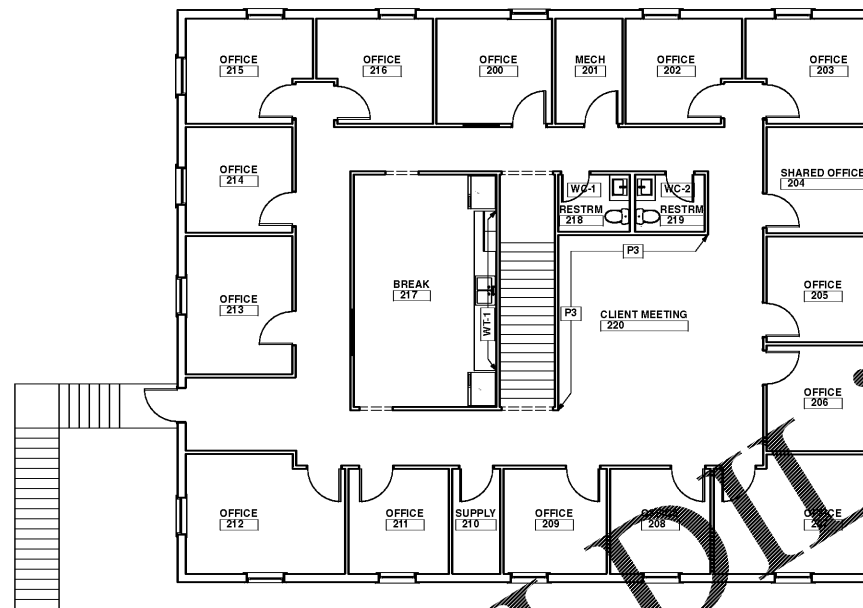
MARK	DATE	ISSUED FOR PRICING DESCRIPTION

PROJECT NO: 20XXXXXX
FILE: 20200625_M&M_Construction.rvt
DRAWN BY: CKW
CHK'D BY: CKW / EJM



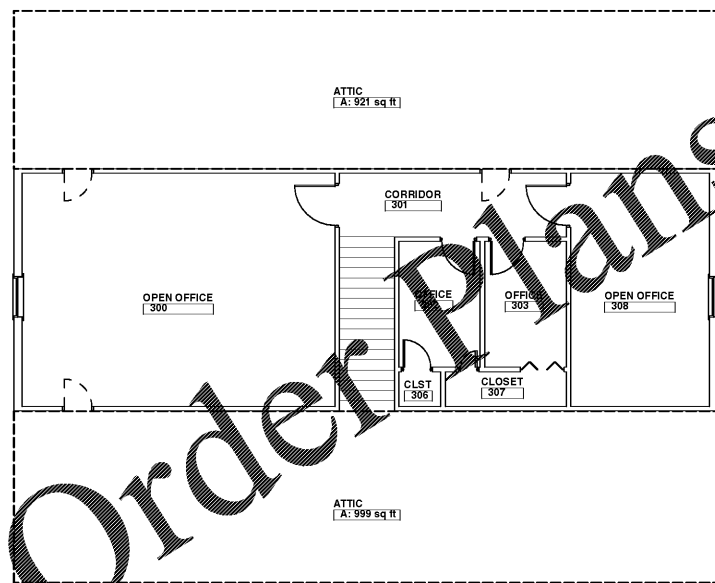
1 FIRST FLOOR WALL FINISH

SCALE: 1/8" = 1'-0"



2 SECOND FLOOR WALL FINISH

SCALE: 1/8" = 1'-0"



3 THIRD FLOOR WALL FINISH

SCALE: 1/8" = 1'-0"

WALL FINISH LEGEND	
P-1	WALL PAINT MANUFACTURER: SHERWIN WILLIAMS COLOR: SW7049 NUANCE FINISH: SATIN
P-2	TRIM PAINT MANUFACTURER: SHERWIN WILLIAMS COLOR: SW 7069 IRON ORE FINISH: SEMI-GLOSS
P-3	ACCENT PAINT MANUFACTURER: SHERWIN WILLIAMS COLOR: SW 9177 SALTY DOG FINISH: SATIN
WC-1	VINYL WALLCOVERING MANUFACTURER: THIBAUT PATTERN: MILANO SQUARE T10422 - NAVY VERT. REPEAT - 5" WIDTH - 39" MATCH STRAIGHT
WC-2	VINYL WALLCOVERING MANUFACTURER: THIBAUT PATTERN: MILANO SQUARE T10419 - GREY VERT. REPEAT - 5" WIDTH - 39" MATCH STRAIGHT
WT-1	WALL TILE MANUFACTURER: DAL TILE STYLE: COLOR WHEEL MOSAIC - 1-1/2 HEX COLOR: NAVY #K189 GROUT: LATICRETE- LIGHT PEWTER #90

MILLWORK FINISH LEGEND	
CT-1	COUNTERTOP MANUFACTURER: CORIAN QUARTZ COLOR: VERSILIA GRIGIO REFER TO ELEVATIONS SHEET A107
CT-2	COUNTERTOP MANUFACTURER: CORIAN SOLID SURFACE COLOR: GLACIER WHITE REFER TO ELEVATIONS SHEET A107
PL-1	PLASTIC LAMINATE MANUFACTURER: WILSONART COLOR: BUKA BARK #7982-38 FINISH: FINE VELVET FINISH REFER TO ELEVATIONS SHEET A107
PL-2	PLASTIC LAMINATE MANUFACTURER: WILSONART COLOR: FOSSIL SHALE #D504-60 FINISH: MATTE FINISH REFER TO ELEVATIONS SHEET A107
SF-1	SPECIALTY FINISH MANUFACTURER: STACKED WOOD WALLS PATTERN: RECLAIMED COLLECTION #6005 COLOR: ROOTWOOD NATURAL PANEL SIZE: 19.5" X 9" (CASE = 9 PIECES, 11.0 SF) REFER TO ELEVATIONS SHEET A107 CONTACT LBI-BOYD DESIGN RESOURCE 1-800-472-7891 - LBIBOYD.COM

WALL FINISH NOTES	
1.	WALLS THROUGHOUT TO BE PAINTED P-1: SW 7049 NUANCE, SATIN, UNLESS OTHERWISE NOTED ON WALL FINISH PLAN.
2.	DOOR TRIM, WOOD BASE, & CROWN THROUGHOUT TO BE PAINTED P-2: SW 7069 IRON ORE, SEMI-GLOSS