

GENERAL NOTES

THE FOLLOWING NOTES SHALL SUPPLEMENT THE DRAWINGS AND CONTRACT DOCUMENTS...

GENERAL REQUIREMENTS

- 1. ATTENTION ALL USERS OF THESE DRAWINGS, GENERAL CONTRACTORS, SUB-CONTRACTORS, MANUFACTURERS, SUPPLIERS... 2. THE DRAWINGS AND SPECIFICATIONS ARE SEPARATED INTO DISCIPLINES... 3. THE GENERAL CONTRACTOR SHALL BE SOLELY RESPONSIBLE FOR AND HAVE CONTROL OVER CONSTRUCTION MEANS, METHODS, TECHNIQUES, SEQUENCES, PROCEDURES AND COORDINATION OF ALL PORTIONS OF THE WORK...

DRAWINGS AND DIMENSIONS

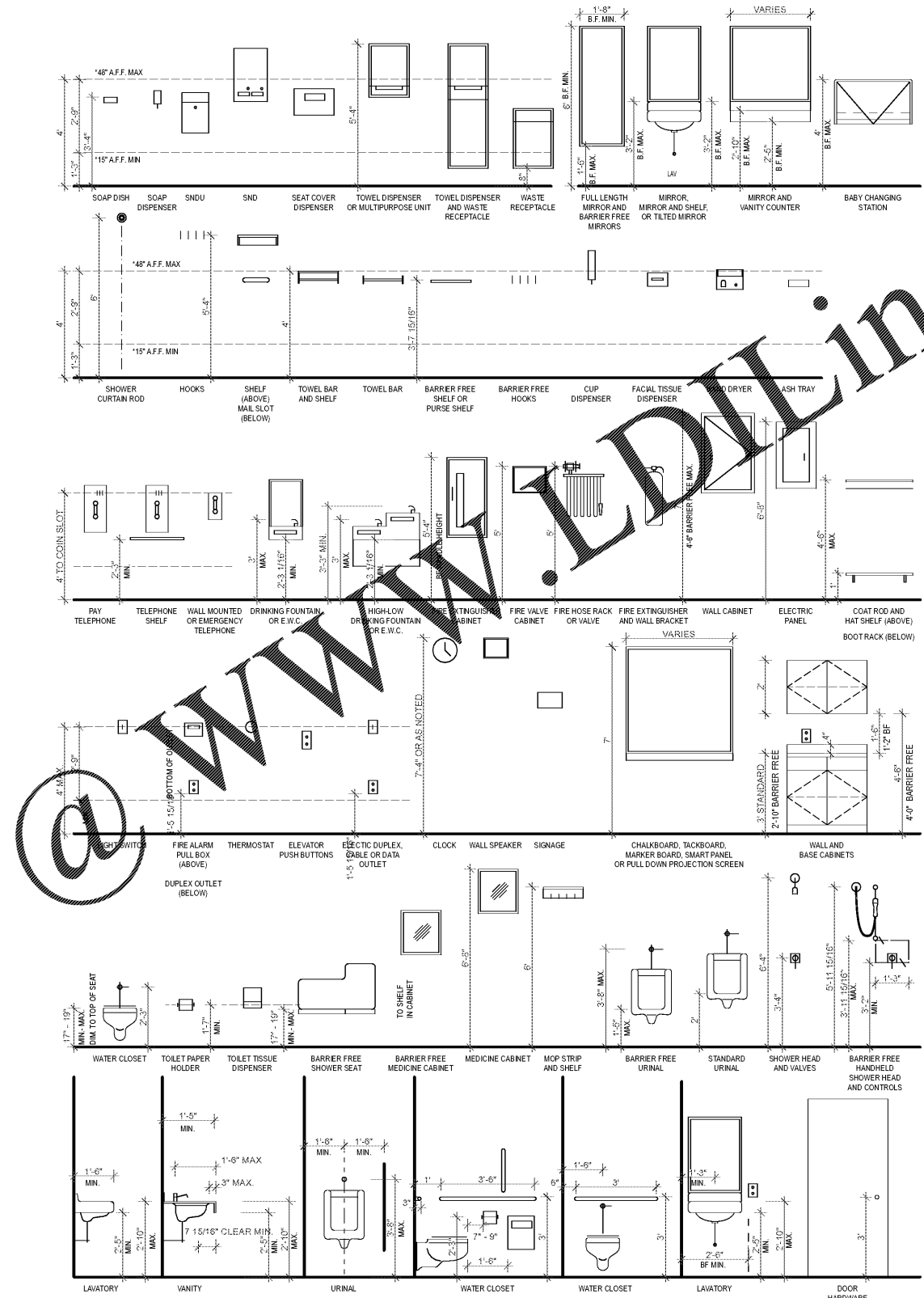
- 1. DO NOT SCALE THE DRAWINGS. THE GENERAL CONTRACTOR, SUB-CONTRACTORS AND ALL EMPLOYEES ON THIS PROJECT SHALL NOT SCALE THE DRAWINGS TO DETERMINE DISTANCES NOT DIMENSIONED ON THE DRAWINGS... 2. THE ARCHITECT'S DIMENSIONS MUST BE THOROUGHLY EXAMINED AND VERIFIED BY THE CONTRACTOR... 3. ALL DIMENSIONS ON PLANS ARE TO FACE OF BLOCK OR TO FACE OF STUD UNLESS NOTED OTHERWISE...

PARTITION NOTES

- 1. PROVIDE AND INSTALL ALL BLOCKING STIFFENERS, BRACING, BACK-UP PLATES AND SUPPORTING BRACKETS REQUIRED FOR THE INSTALLATION OF ALL CASEWORK AND OF ALL FLOOR MOUNTED OR SUSPENDED MECHANICAL AND ELECTRICAL EQUIPMENT... 2. COORDINATE METAL STUD GAUGE WITH PRE-APPROVED EQUIPMENT ANCHORAGE WHERE A DISCREPANCY OCCURS... 3. PROVIDE SOLID BLOCKING WITHIN PARTITIONS AT ALL LOCATIONS WHERE ITEMS WILL BE MOUNTED ON PARTITIONS INCLUDING, BUT NOT LIMITED TO: ACCESSORIES, CASEWORK TRIM, FLASHING, WALL MOUNTED EQUIPMENT, TACK-BULLETIN/MARKER BOARDS, ETC.

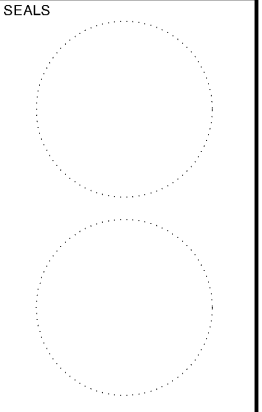
CONSTRUCTION NOTES

- 1. CONTRACTOR SHALL DURING CONSTRUCTION, PROTECT SURFACE SITE DETERIORATING BY TEMPORARY DITCHING, SUMPING OR OTHER APPROVED METHODS TO STOP SURFACE WATER FROM RUNNING INTO FOOTING TRENCHES AND OTHER EXCAVATIONS... 2. IF APPLICABLE PER BUILDING CODE ALL WOOD BLOCKING SHALL BE FIRE-RETARDANT WOOD... 3. ALL WOOD MEMBER IN CONTACT WITH CONCRETE, MASONRY OR IN WET LOCATIONS INCLUDING FRAMING, BLOCKING, PLYWOOD OR OSB SHALL BE PRESSURE TREATED... 4. SEAL AROUND ALL PENETRATIONS THROUGH EXISTING AND PROPOSED FIRE RATED PARTITIONS...



Cheatham Fletcher Scott ARCHITECTS + DESIGNERS

420 Eighth St, Augusta, Georgia 30901 P: 706-724-2668 W: cfsarchitects.com



PROJECT TITLE McLEOD & MURDOCK

6004 Evans Town Center Blvd Evans, GA 30809

GENERAL NOTES

Table with columns for MARK, DATE, and DESCRIPTION. Includes entry for 07/28/20 ISSUED FOR PRICING.

PROJECT NO: 20XXXXXX FILE: 20200625_M&M_Construction...

DRAWN BY: CKW CHK'D BY: CKW / EJM

A002