

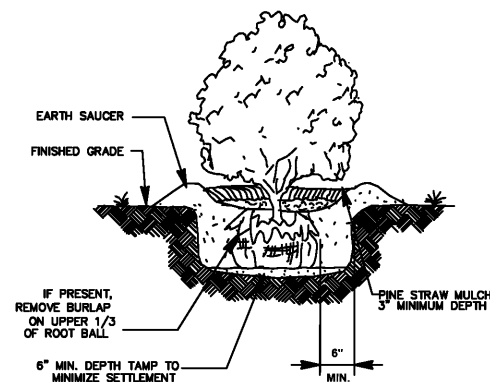
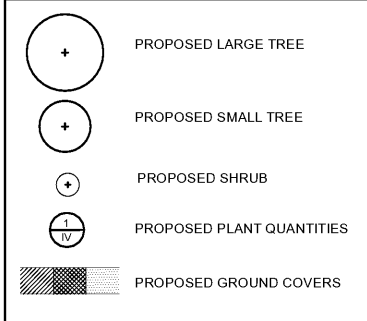
LANDSCAPE NOTES:

- ALL DISTURBED AREAS NOT COVERED BY STRUCTURES, PAVING, OR LANDSCAPING SHALL BE GRASSED. OWNER WILL DETERMINE VARIETY AND EXTENT OF SODDING VS. SEEDING. THE CONTRACTOR WILL UTILIZE EXISTING GRASS WHENEVER POSSIBLE.
- ALL PLANT BEDS SHALL BE MULCHED WITH 3" OF PINE STRAW.
- NO LARGE TREES SHALL BE PLANTED WITHIN 10 FEET OF ANY UNDERGROUND UTILITY LINE OR STORM DRAIN. LANDSCAPE CONTRACTOR SHALL VERIFY LOCATION OF UTILITIES PRIOR TO BEGINNING PLANT INSTALLATION. LANDSCAPE ARCHITECT TO APPROVE ALL REVISIONS TO PLANT LOCATIONS. LANDSCAPE CONTRACTOR SHALL BE RESPONSIBLE FOR REPAIR OF ANY UTILITY LINES DAMAGED DURING PLANTING.
- SEE DETAILS ON CONSTRUCTION DETAIL SHEET FOR SHRUB AND TREE INSTALLATION.
- TOP SOIL SHALL BE ADDED TO WITHIN 1" OF TOP OF CURB / EDGE OF PAVEMENT.
- AN UNDERGROUND IRRIGATION SYSTEM, IF INSTALLED, SHALL COMPLY WITH ALL THE REQUIREMENTS AND REGULATIONS OF THE CITY/COUNTY AND ALSO COMPLY WITH THE LATEST NATIONAL ELECTRIC CODE RULES FOR ALL ELECTRICAL WIRINGS AND MATERIALS.
- QUANTITIES ARE SHOWN FOR CONVENIENCE ONLY. CONTRACTOR IS RESPONSIBLE FOR HIS/HER OWN TAKEOFFS.
- GUARANTEE: THE CONTRACTOR SHALL GUARANTEE ALL WORKMANSHIP AND PLANT MATERIAL TO BE FREE OF DEFECTS FOR A PERIOD OF ONE (1) YEAR FROM FINAL ACCEPTANCE OF THE PROJECT. CONTRACTOR SHALL REPLACE ANY PLANT MATERIAL FOUND TO BE DEFECTIVE WITHIN THE PERIOD OF GUARANTEE AT NO COST TO THE OWNER. REPAIRS OR REPLACEMENT NECESSITATED BY DAMAGE BY OTHERS OR DIEBACK DUE TO INSUFFICIENT IRRIGATION WILL BE AT OWNER'S SCHEDULE.
- EXISTING VEGETATION AND LANDSCAPING TO REMAIN, SHALL BE CLEARED OF WEEDS AND WEEDS.
- LANDSCAPE PLAN SHALL BE IN COMPLIANCE WITH CITY OF RINCON GROWTH MANAGEMENT CODE

PATEL CONVENIENCE STORE PLANT SCHEDULE

ITEM	SCIENTIFIC NAME	COMMON NAME	QTY	SIZE	SPACING	NOTES
GROUND COVER	HH	HEMEROCALLIS SPP.	52	1 GAL	2' O.C.	YELLOW FLOWER
	MUC	MUHLENBERGIA CAPILLARIS	50	1 GAL	3' O.C.	-
SHRUBS	IVS	ILEX VOMITORIA	28	3 GAL	3.5' O.C.	-
	VO	VIBURNUM OBOVATUM	103	3 GAL	3.5' O.C.	-
	VS	VIBURNUM SUSPENSUM	19	3 GAL	4' O.C.	-
	AB	ACER B. FLORIDANUM	9	2.0'-2.5' CAL	AS SHOWN	-
TREES	JV	JUNIPERUS VIRGINIANA	10	2.0'-2.5' CAL	AS SHOWN	-
	LIP	LACINOSTROEMIA INDICA 'POTOMAC'	10	2" CAL (8-10 FT)	AS SHOWN	2-3 STEM, LT. PINK
	NO	QUERCUS NUTTALLII	3	2.0'-2.5' CAL	AS SHOWN	-
	MC	MYRICA CERIFERA	15	7 GAL	15' O.C.	-
	TD	TEXODIUM DISTICHUM	9	2.0'-2.5' CAL	20' O.C.	-

LANDSCAPING LEGEND



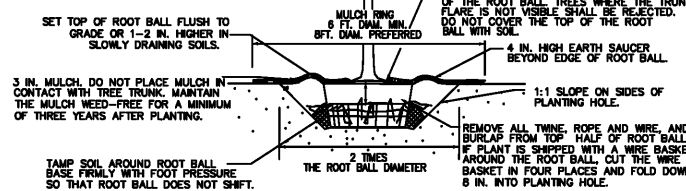
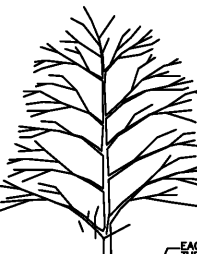
NOTES

- CLEANLY PRUNE ONLY DAMAGED, DISEASED AND OR WEAK BRANCHES IF NECESSARY.
- FINISHED GRADE AROUND PLANT TO BE THE SAME AS ORIGINAL GRADE OF PLANT WHEN GROWN.

SHRUB PLANTING
NOT TO SCALE

ORDINANCE COMPLIANCE

TOTAL AREA = 1.45 AC.	0
GREENSPACE: 0.95 ACRES IMPERVIOUS	0
0.50 ACRES PERVIOUS	0
34% PERVIOUS AREA	0
TREE POINTS REQ'D: 1.45 x 16 = 23.2	0
STREET TREE POINTS REQ'D (BLUE JAY): 233/40 = 7.3	0
STREET TREE POINTS REQ'D (MCCALL): 240/40 = 6	0
TOTAL TP EXISTING=	0
TOTAL TP PROPOSED=	26
TOTAL TP PROVIDED=	26
TOTAL STP (BLUE JAY) EXISTING=	0
TOTAL STP (BLUE JAY) PROPOSED=	7
TOTAL STP (BLUE JAY) PROVIDED=	7
TOTAL STP (MCCALL) EXISTING=	0
TOTAL STP (MCCALL) PROPOSED=	6
TOTAL STP (MCCALL) PROVIDED=	6



- NOTES**
- DO NOT HEAVILY PRUNE THE TREE AT PLANTING. PRUNE ONLY CROSSOVER LIMBS, CO-DOMINANT LEADERS, AND BROKEN OR DEAD BRANCHES. SOME INTERIOR TWIGS AND LATERAL BRANCHES MAY BE PRUNED; HOWEVER, DO NOT REMOVE THE TERMINAL BUDS OF BRANCHES THAT EXTEND TO THE EDGE OF THE CROWN.
 - STAKE TREES ONLY UPON THE APPROVAL OF THE LANDSCAPE ARCHITECT (SEE STAKING DETAILS).

TREE PLANTING
NOT TO SCALE

REVISION DESCRIPTION BY DATE

NO. 1. 2. 3. 4. 5. 6. 7. 8. 9. 10.

EMC ENGINEERING SERVICES, INC.
 1211 Merchant Way, Suite 201
 Statesboro, GA 30458
 Ph: (912) 794-7022
 Fax: (912) 733-4580
 statesboro@emc-eng.com
 www.emc-eng.com

PATEL CONVENIENCE STORE
 BLUE JAY & MCCALL ROAD
 RINCON, GEORGIA
 Prepared for:
 VIPULKUMAR PATEL

LANDSCAPE PLAN

PROJECT NO.: 20-0025
 DRAWN BY: JCH
 DESIGNED BY: DWF
 SURVEYED BY: EMC
 SURVEY DATE: FEBRUARY 2016
 CHECKED BY: DWF
 SCALE: 1" = 20'
 DATE: APRIL 2020

SHEET 11 OF 17