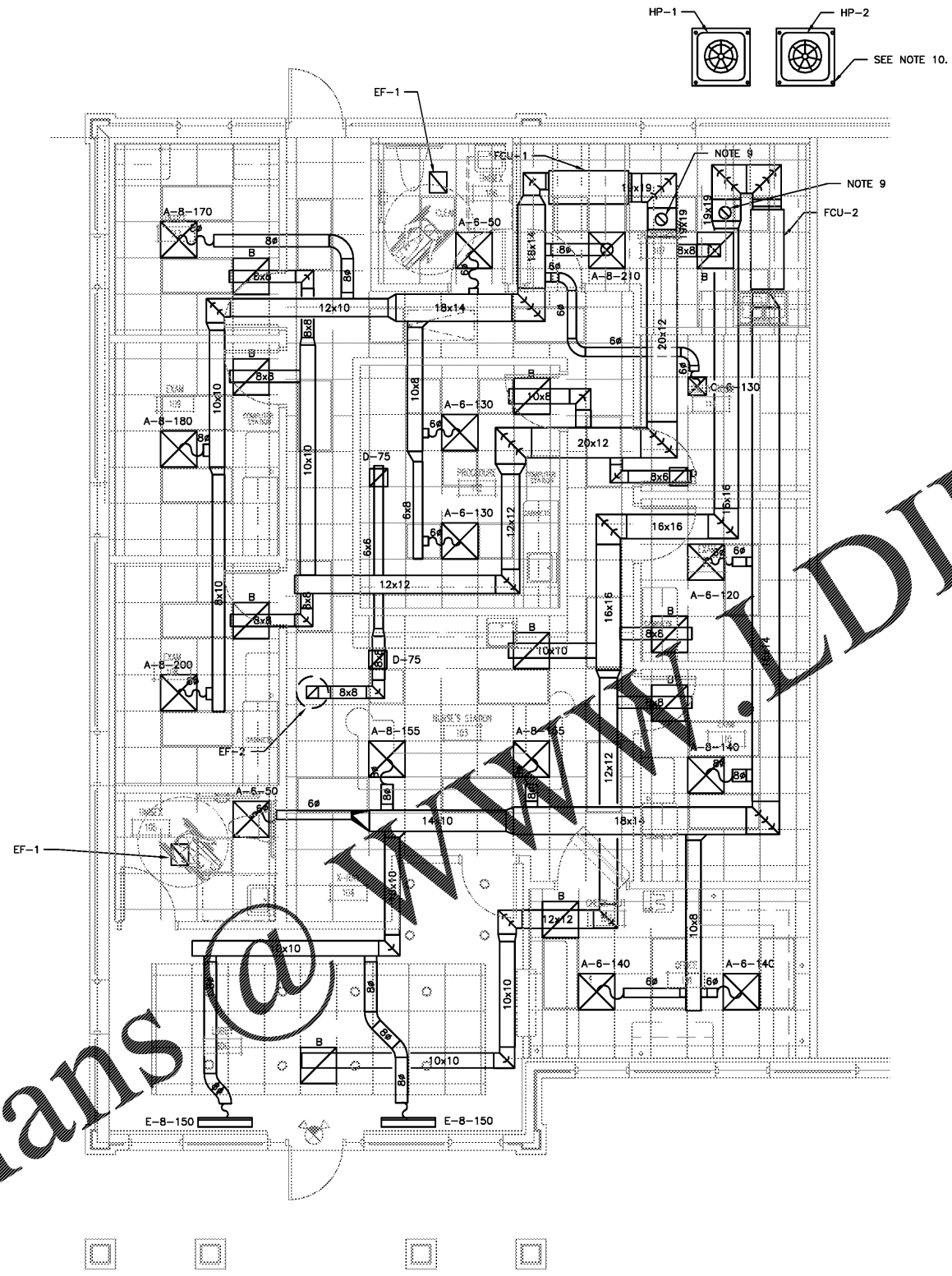


Order Plans @ www.walddilino.com



- HVAC GENERAL NOTES**
1. THESE GENERAL NOTES SHALL APPLY TO ALL MECHANICAL SHEETS.
 2. ALL DUCT SIZES ARE CLEAR INSIDE DIMENSIONS - INSULATE AS SPECIFIED; PROVIDE FLEXIBLE CONNECTIONS AS DETAILED AT ALL FANS AND ROOFTOP UNITS.
 3. PROVIDE SHOP DRAWINGS SHOWING EXACT SIZES & LOCATIONS OF ALL ROOF & WALL OPENINGS REQUIRED PRIOR TO CONSTRUCTION. STRUCTURAL FRAMES AROUND ALL OPENINGS SHALL BE FURNISHED AND INSTALLED AS REQUIRED.
 4. SUPPORT ALL DUCTS, PIPES & INSULATION, ETC. FROM BUILDING STRUCTURE W/ HSTEEL ANGLES AND 1" 24 GAGE STRIP.
 5. REFER TO ARCHITECTURAL DRAWINGS FOR CLEARANCES, CEILING HEIGHTS AND DETAILS - SEE ELEVATIONS AND REFLECTED CEILING PLANS FOR EXACT LOCATIONS OF AIR DEVICES AND EXPOSED DUCTS.
 6. FLEXIBLE INSULATED DUCT SIZES ARE INSIDE DIMENSIONS - INSULATE AND VAPOR SEAL CEILING HUSK NECKS, TRANSITIONS & "SPIN-IN" TAPS, NO COOPS.
 7. PROVIDE SLEEVES AND FLASHINGS REQUIRED FOR PIPING AND DUCTWORK PENETRATIONS; PROVIDE ESCUTCHEON PLATES FOR ALL PIPING PENETRATING FINISHED WALLS & CEILINGS.
 8. PROVIDE CONDENSATE DRAINS FROM ALL FAN COIL UNITS TO NEAREST SINK DRAIN.
 9. PROVIDE 3" O.A. DUCT UP THRU ROOF WITH ROOF CAP.
 10. PROVIDE ANCHOR BOLTS TO ATTACH THE CONDENSING UNIT TO THE CONCRETE PAD, TYPICAL OF ALL FOUR CORNERS.

① FLOOR PLAN - HVAC
Scale: 1/4"=1'-0"



**ARCHITECTURE
ENGINEERING**
3680 Pleasant Hill Road
Suite 200
Duluth, Georgia 30096
p 770.622.9858
f 770.622.9535
www.hilfleyrossi.com

This drawing and all reproductions thereof are the property of HRF Hillfleyrossi & Associates, LLC ©2019. It is intended for the sole use of the project named herein. Reproduction without the written consent of HRF is unlawful. All copies are to be returned to HRF upon project completion.

Sealed: 06-12-2020



Suite 101 - Village Podiatry Centers
Sugar Hill Professional Park,
4749 Nelson Brogdon Blvd., Bldg. 300 Suite 101
Sugar Hill, GA, 30518
Owner:
DR. CLIFF JOHNSON
Phone: 678-643-1742

NOT ISSUED FOR CONSTRUCTION

ISSUED / REVISIONS:

DATE	DESCRIPTION:

FLOOR PLAN
HVAC

M101

GRANADE ENGINEERING GROUP, LLC
Consulting Engineers
12345 Greenmont Walk • Alpharetta, Georgia 30009
Phone: 678-520-8663 GEG #20117

HFR 20-164.00