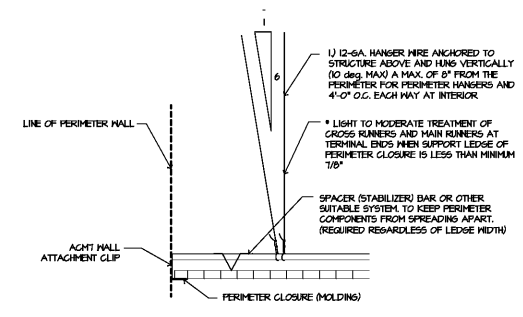
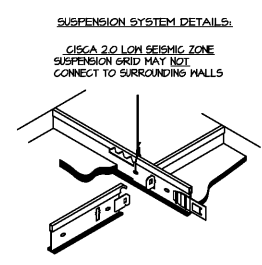


4 Lateral Bracing Detail
SCALE: NTS
A103



3 Suspended Ceiling Detail
SCALE: NTS
A103



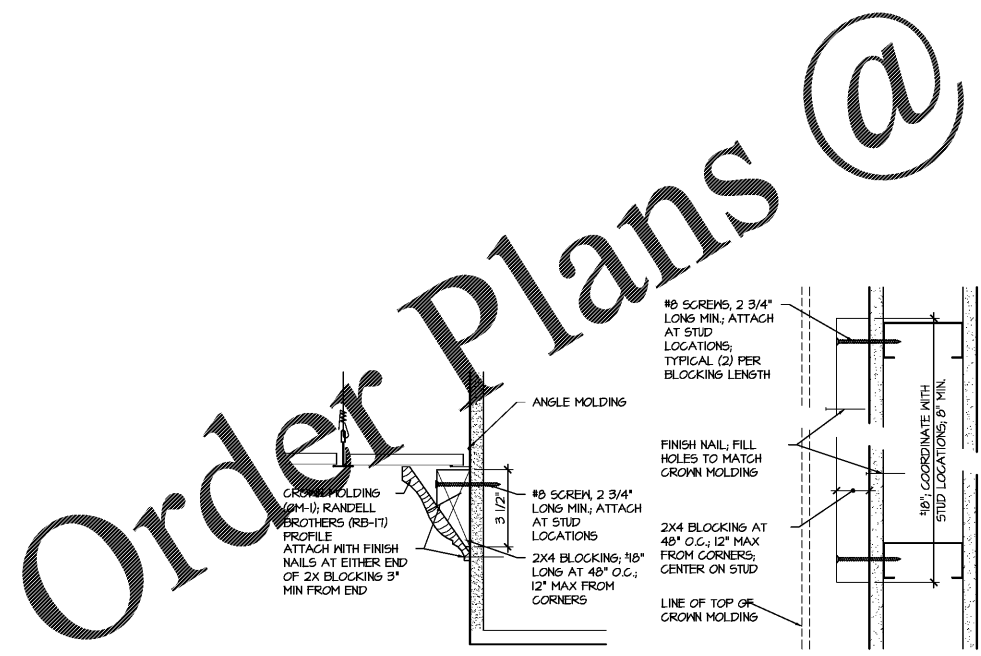
2 Acoust. Ceiling Seismic Detail
SCALE: NTS
A103

CEILING LEGEND	
	2x4 FLUORESCENT LIGHT
	2x2 FLUORESCENT LIGHT
	STORAGE ROOM LIGHT
	EXIT SIGN WITH EMERGENCY LIGHT
	SUPPLY DIFFUSER
	FAN
	RETURN GRILLE
	CIRCULATION VENT (AS REQUIRED)
	FIRE EXTINGUISHER

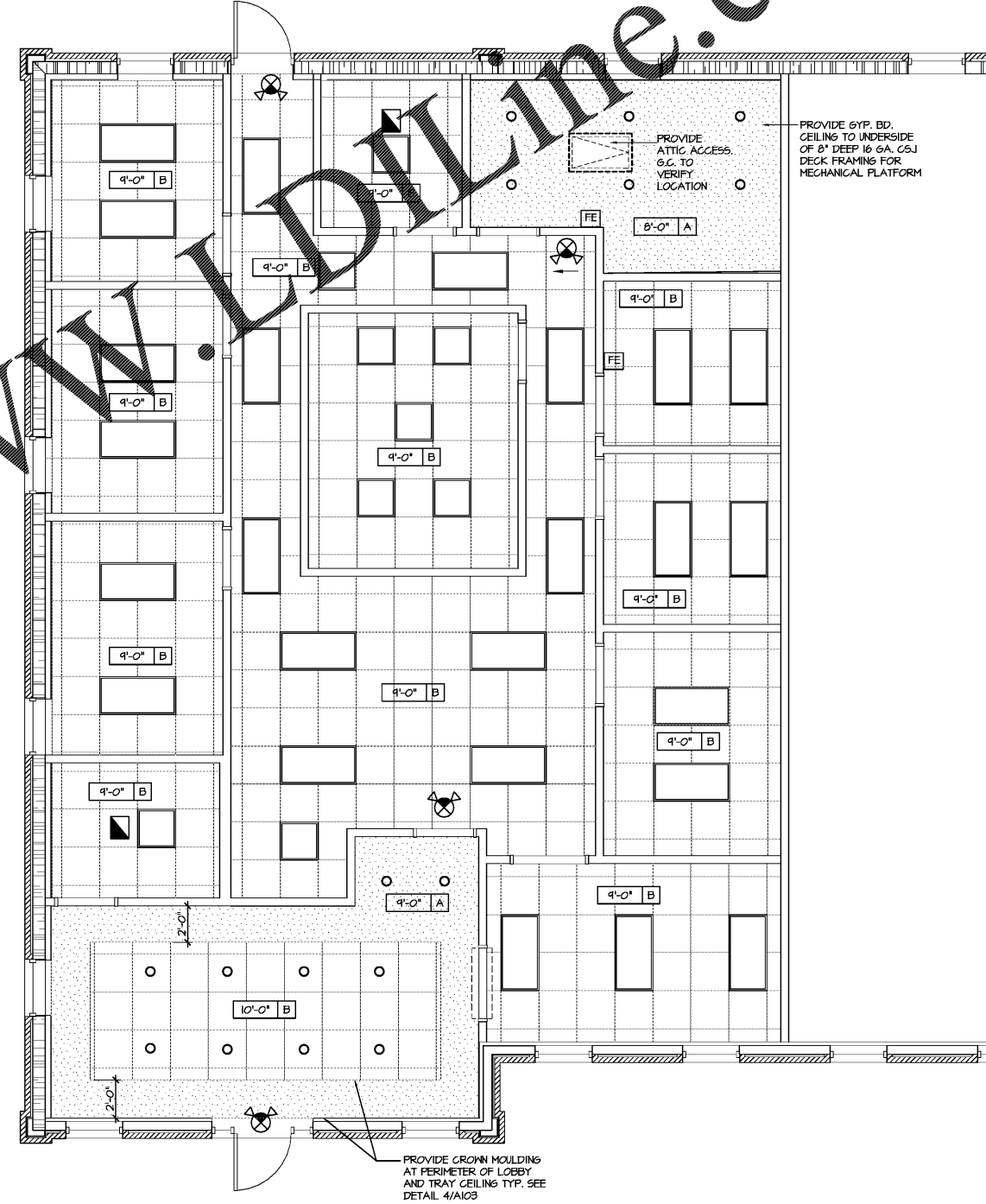
CEILING TYPE	CEILING HEIGHT
A. GYPSUM BOARD SYSTEM (PAINTED)	A X'-X"
B. 2x2 A.C.T. DROPPED CEILING WITH GRID SYSTEM	B X'-X"

R.C.P. GENERAL NOTES

- REFER TO ELECTRICAL AND MECHANICAL DRAWINGS FOR ALL LIGHTING FIXTURES, AND AIR GRILLE LOCATIONS AND SPECIFICATIONS.
- EMERGENCY LIGHTING TO BE LOCATED IN 2 X 4 FIXTURES WITH BATTERY BACK-UP - COORDINATE WITH ELECTRICAL DOCUMENTS
- PROVIDE NEW EXIT SIGNS AS REQUIRED.
- ALL CEILING HEIGHTS TO BE 9'-0" AFF. UNO.
- PROVIDE CROWN HOLDING AT PERIMETER OF LOBBY BELLETS



5 Crown Moulding Detail
SCALE: NTS
A103



1 Reflective Ceiling Plan
SCALE: 1/4"=1'-0"
A103

Order Plans @ www.LDOnline.com