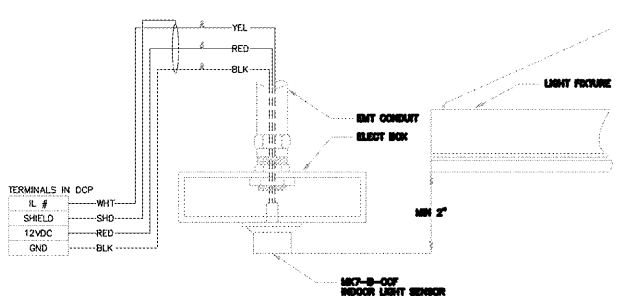
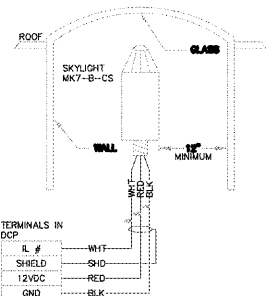


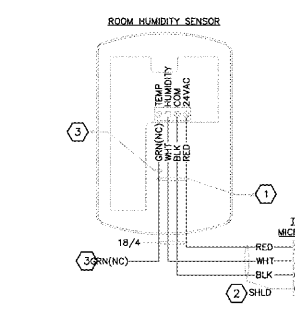
MP 2 MICROPAD WIRING DETAIL
NO SCALE



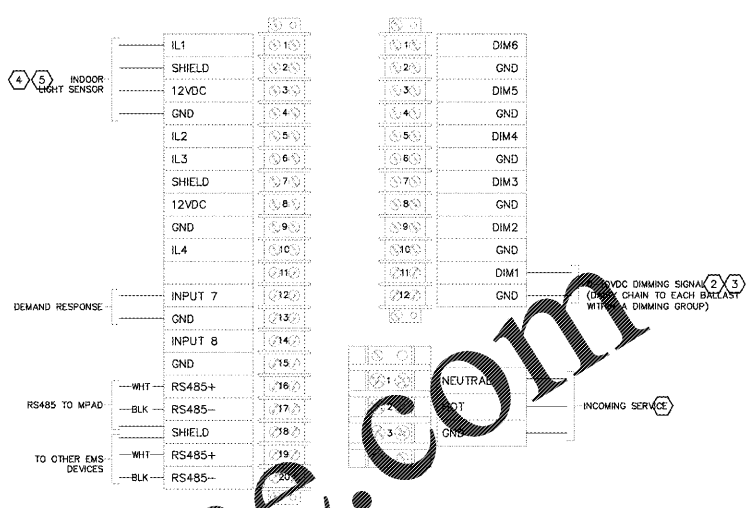
IL 1 CEILING MOUNT IL SENSOR WIRING DETAIL
NO SCALE



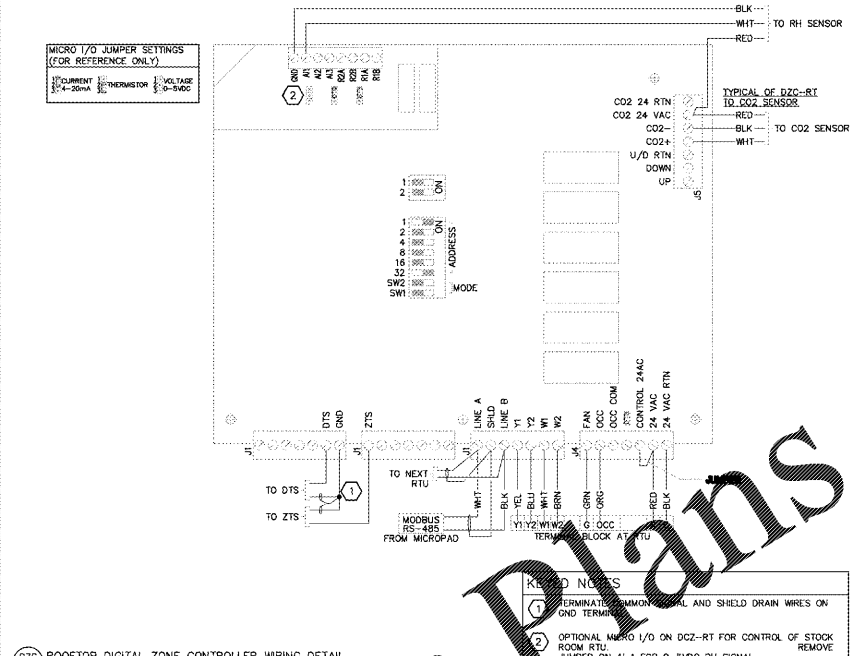
SK 2 SKYLIGHT SENSOR FIELD WIRING
NO SCALE



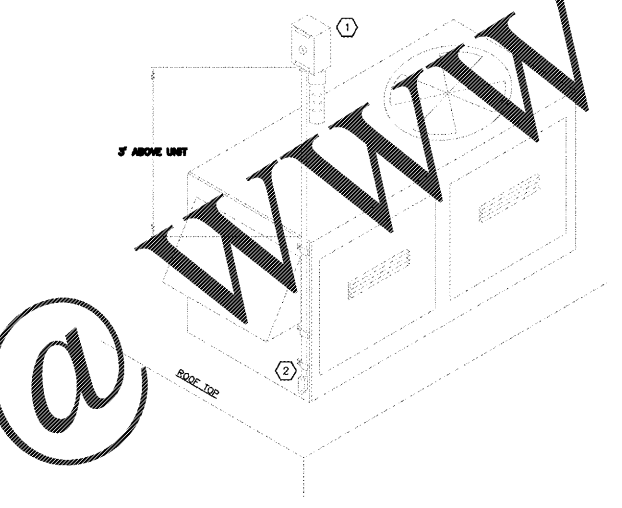
RH 1 RELATIVE HUMIDITY SENSOR WIRING DETAIL
NO SCALE



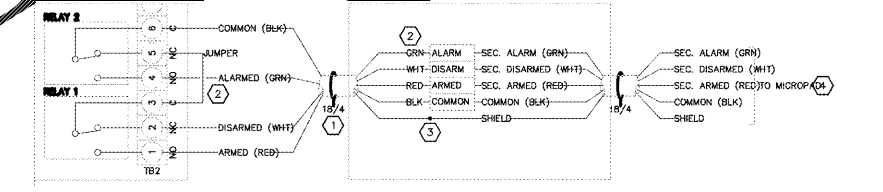
DCP 1 DCP (6 CHANNELS) WIRING DETAIL
NO SCALE



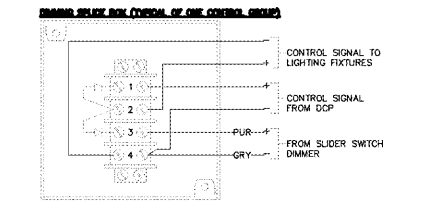
DZC 1 ROOFTOP DIGITAL ZONE CONTROLLER WIRING DETAIL
NO SCALE



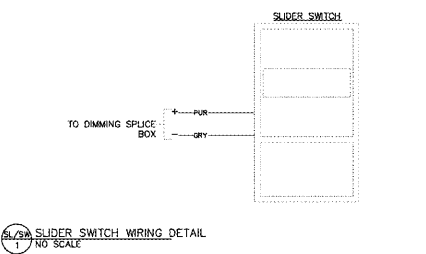
OSD 1 OUTSIDE SENSOR DEVICE MOUNTING DETAIL
NO SCALE



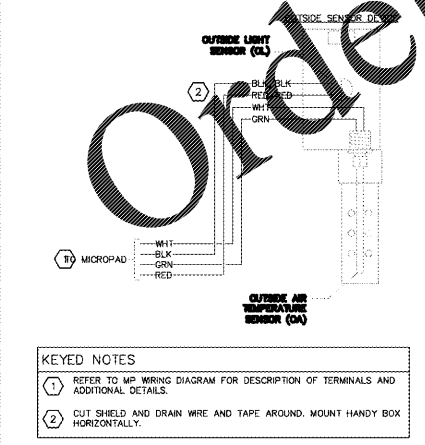
SEC 1 SECURITY INTERFACE SYSTEM WIRING DETAIL
NO SCALE



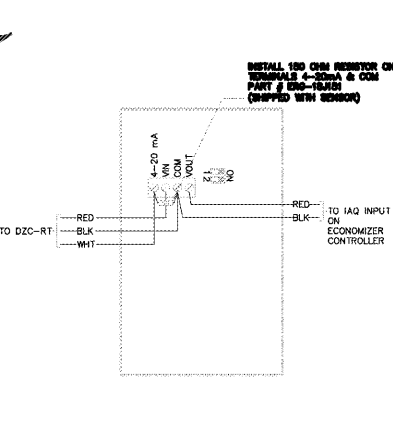
SW 1 DIMMING SPACE BOX WIRING DETAIL
NO SCALE



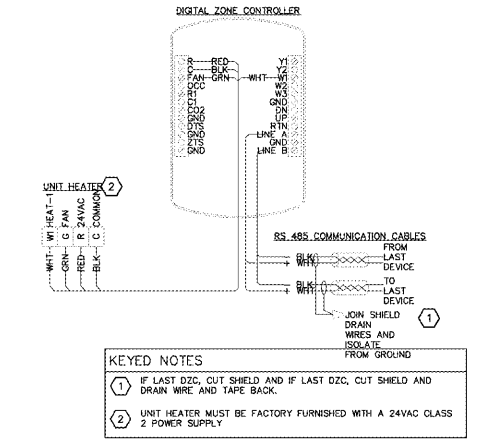
SW 2 SLIDER SWITCH WIRING DETAIL
NO SCALE



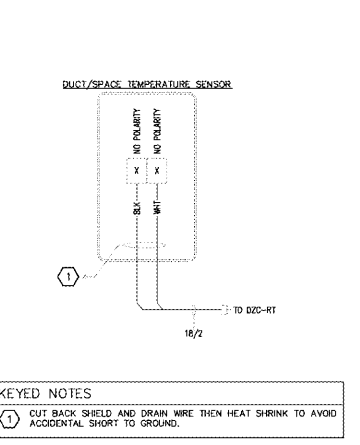
OSA 2 OUTSIDE AIR TEMPERATURE SENSOR WIRING DETAIL
NO SCALE



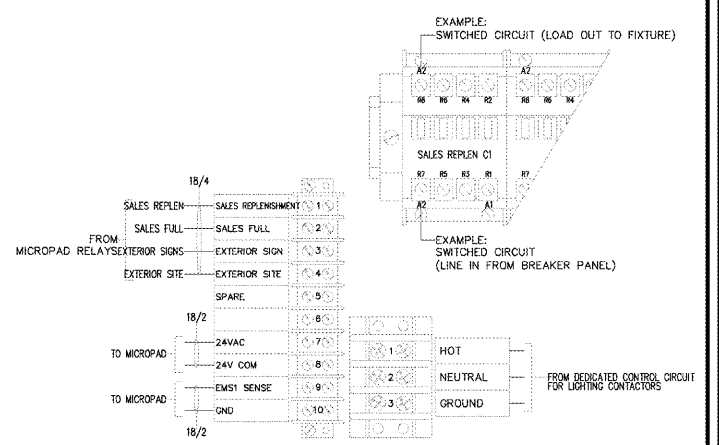
CO2 1 CO2 SENSOR WIRING DETAIL
NO SCALE



DZC 1 DIGITAL ZONE CONTROLLER WIRING DETAIL
NO SCALE



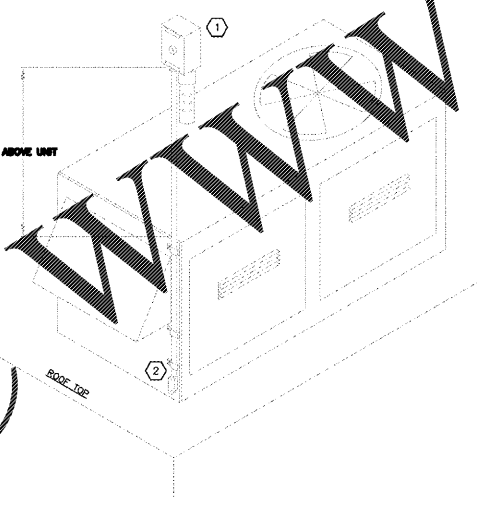
D/S 1 DUCT / SPACE SENSOR WIRING DETAIL
NO SCALE



LCP 1 LIGHTING CONTROL PANEL WIRING DETAIL
NO SCALE

Order Plans

@



www.IDIline.com

Project: HARBOR FREIGHT NEW CONSTRUCTION NATIONAL EMS BID SET

Description: PROTOTYPICAL NATIONAL EMS BID SET

SIEMENS
9225 BEE CAVES ROAD, BLDG. B, SUITE 100,
AUSTIN, TEXAS 78733 Phone: 512-421-6257

Date: 11-15-17
Scale: NTS
Drawing File Name/Origin: Harbor Freight-Bid Set-NA-Rev1.dwg

#	DESCRIPTION	DATE	BY
0	Initial Release	11-15-17	MS
1	Revised	1-3-18	MS
2	Revised	4-16-18	MS
3	Revised	4-23-18	MS
4	Revised	8-12-19	MS
5	Revised	10-10-19	MS

Revisions

EMS-2