

ROOFTOP UNIT SCHEDULE (NO SUBSTITUTIONS ALLOWED)																			
TAG	LABEL TAG	MANUFACTURER MODEL NUMBER	NOMINAL TONNAGE	CFM	E.S.P. (IN.)	OUTDOOR AIR	HEATING CAPACITY		GROSS COOLING CAPACITY				ELECTRICAL DATA			REMARKS			
							1st STAGE (MBH)	2nd STAGE (MBH)	TOTAL (MBH)	SENSIBLE (MBH)	EER/SEER	AMBIENT TEMP	SIX FAN HP VOLTAGE	MCA	MCCP		WEIGHT (LBS)		
RTU-01	XXXX-RTU-01	LENIXOX LGH1204MHYH	10	4000	0.6"	1040	158/124.8	240/192	80	80/67	124.4	88.6	12.0 EER 13.8 EER	96°F	3 HP 208/230V 3 PH	52	60	1400	SEE NOTES BELOW
RTU-02	XXXX-RTU-02	LENIXOX LGH1204MHYH	10	4000	0.6"	1040	158/124.8	240/192	80	80/67	124.4	88.6	12.0 EER 13.8 EER	96°F	3 HP 208/230V 3 PH	52	60	1400	SEE NOTES BELOW
RTU-03	XXXX-RTU-03	LENIXOX LGH1204MHYH	10	4000	0.6"	1040	158/124.8	240/192	80	80/67	124.4	88.6	12.0 EER 13.8 EER	96°F	3 HP 208/230V 3 PH	52	60	1400	SEE NOTES BELOW
RTU-04	XXXX-RTU-04	LENIXOX LGH1204MHYH	7-1/2	3000	0.6"	450	158/124.8	240/192	80	80/67	93.0	67.8	12.5 EER 14.0 EER	96°F	2 HP 208/230V 3 PH	39	45	1350	SEE NOTES BELOW
RTU-05	XXXX-RTU-05	LENIXOX LGH0204MHYH	7-1/2	3000	0.6"	450	158/124.8	240/192	80	80/67	93.0	67.8	12.5 EER 14.0 EER	96°F	2 HP 208/230V 3 PH	39	45	1350	SEE NOTES BELOW

1. 14" HIGH PRE-FABRICATED INSULATED ROOF CURB BY MECHANICAL CONTRACTOR
 2. BAROMETRIC RELIEF DAMPERS
 3. HIGH PERFORMANCE ECONOMIZER 9.10% COMPLETE WITH FAULT DETECTOR AND DIAGNOSTICS SYSTEM (FDD)
 4. DIRTY FILTER SWITCH, 2" MERV 8 FILTERS
 5. BURGLAR BARS BY MECHANICAL CONTRACTOR
 6. MS4V (MULTI-STAGE AIR VOLUME) SUPPLY AIR BLOWER
 7. FACTORY INSTALLED UNIT NON-FUSED DISCONNECT - WEATHERPROOF
 8. R-410a REFRIGERANT
 9. 1800GD ACCESS PANELS
 10. HIGH AND LOW PRESSURE SWITCHES
 11. FREEZE STAT
 12. SERVICE VALVES
 13. COMBINATION HAL/COIL GUARD
 14. CYCLE PROTECTION
 15. 5-YEAR COMPRESSOR WARRANTY
 16. OSHA FACTORY INSTALLED WIRING BY ELECTRICIAN
 17. CURBS PLUS, INC. DROP DIFFUSER SYSTEM (9 VFPD 2415-1012.3, (2) VFPD 2009-57.5)
 18. ROOFTOP UNITS REMOTE SPACE TEMPERATURE SENSORS AND CARBON DIOXIDE SENSORS REFER TO MECHANICAL PLAN TAG NOTE #1 ON DWG. M1.0 FOR ADDITIONAL INFORMATION.
 19. SMOKE DETECTORS IN THE SUPPLY AND RETURN
 20. DRAIN FAN OVERFLOW SWITCH
 NOTE: MECHANICAL CONTRACTOR SHALL PROVIDE REMOTE TEST STATIONS FOR DUCT DETECTORS REFER TO MECHANICAL PLAN TAG NOTE #1 ON DWG. M1.0 FOR ADDITIONAL INFORMATION.

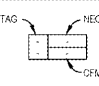
LENIXOX CONTACT: Derek Green: LennoxNationalAccounts@lennoxind.com (672) 497-6092
 LENIXOX NATIONAL ACCOUNT TECH SUPPORT: (800) 367-6286 option 2

VENTILATION AIR REQUIREMENT						
HVAC UNIT	AREA SERVED	OCCUPANT LOAD	REQUIRED VENTILATION	O.A. REQUIRED (CFM)	O.A. (MIN.) SUPPLIED (CFM)	REMARKS
RTU-01	SALES AREA 101	148 (8,721 SF)	7.5 CFM/PERSON 12 CFM/6F (1.25)	2827	2873	PER TENNESSEE MECHANICAL CODE
RTU-04/05	RECEIVING/SALES REPLENISHMENT AREA 104 & 105	6 (8,110 SF)	5 CFM/PERSON 06 CFM/6F (1.25)	490	518	PER TENNESSEE MECHANICAL CODE
RTU-07	CASH ROOM 103	1 (128 SF)	5 CFM/PERSON 06 CFM/6F (1.25)	15	91	PER TENNESSEE MECHANICAL CODE
	MANAGER OFFICE 102	1 (128 SF)	5 CFM/PERSON 06 CFM/6F (1.25)	15	65	PER TENNESSEE MECHANICAL CODE
	VESTIBULE 100	(97 SF)	.06 CFM/SF (1.25)	7	91	PER TENNESSEE MECHANICAL CODE
RTU-02	BREAK ROOM 106	6 (158 SF)	5 CFM/PERSON 06 CFM/6F (1.25)	45	60	PER TENNESSEE MECHANICAL CODE
EF-01	WOMENS 107	1 WC	70 CFM EXH/WC	70	100 EXH	QUANTITIES ARE EXHAUSTED (11 CFM OF O.A. - RTU-05)
EF-02	MENS 108	1 WC	70 CFM EXH/WC	70	100 EXH	QUANTITIES ARE EXHAUSTED (11 CFM OF O.A. - RTU-05)

NOTE: TENNESSEE MECHANICAL CODE BREATHING ZONE OUTDOOR AIR FLOW (CFM) $Vbz = RpPz + RAz \times 1.25$
 WHERE:
 Az = ZONE FLOOR AREA
 Pz = POPULATION
 Rp = TABLE 6.1 OUTDOOR AIR PER PERSON
 Ra = TABLE 6.1 OUTDOOR AIR PER AREA

ASSET LABELING SCHEDULE		
PLAN TAG	LABEL TAG	DESCRIPTION LOCATION
RTU-01	XXXX-RTU-01	ROOFTOP UNIT SALES/OFFICE/VESTIBULE AREA
RTU-02	XXXX-RTU-02	ROOFTOP UNIT SALES AREA
RTU-03	XXXX-RTU-03	ROOFTOP UNIT SALES AREA
RTU-04	XXXX-RTU-04	ROOFTOP UNIT SALES REPLENISHMENT AREA
RTU-05	XXXX-RTU-05	ROOFTOP UNIT SALES REPLENISHMENT AREA
EF-01	XXXX-EF-01	EXHAUST FAN WOMEN TOILET ROOM
EF-02	XXXX-EF-02	EXHAUST FAN MENS TOILET ROOM
EF-03	XXXX-EF-03	EXHAUST FAN MANAGERS OFFICE
EF-04	XXXX-EF-04	EXHAUST FAN CASH ROOM

AHU AIR HANDLING UNIT, FURNACE, FAN COOL UNIT
 COND CONDENSING UNIT
 DH DUCT HEATER
 EF EXHAUST FAN
 RTU ROOFTOP UNIT
 LH UNIT HEATER, CABINET UNIT HEATER
 WH WALL HEATER
 WL UNIT WALL UNIT
 MISC MISCELLANEOUS

GRILLE, REGISTER AND DIFFUSER SCHEDULE											
TAG	MANUFACTURER & MODEL NUMBER	CFM	AIR PATTERN	NECK SIZE	DAMPER	FRAME STYLE	PANEL SIZE	MAXIMUM NO LEVEL	FINISH	MATERIAL	REMARKS
CD A	PRICE PRODIGY PFD2	AS NOTED	AS SHOWN	AS NOTED	OPPOSED BLADE	LAY-IN CEILING	24x24	30	WHITE POWDER COAT	STEEL	PROVIDE WITH WALL MOUNTED ROOM T STAT W/ LCD DISPLAY. MC TO PROVIDE 1200V CONTROL TRANSFORMER MC SHALL WIRE LOW VOLTAGE T-STATS. PROVIDE WITH INSULATED SHOCKPANS.
CD B	PRICE SPD	AS NOTED	AS SHOWN	AS NOTED	OPPOSED BLADE	LAY-IN CEILING	24x24	30	WHITE POWDER COAT	STEEL	
CD C	PRICE SPD	AS NOTED	AS SHOWN	AS NOTED	OPPOSED BLADE	SURFACE MOUNTED	12x12	30	WHITE POWDER COAT	STEEL	
CD D	CURBS PLUS, INC. VFPD 2008-57.5	AS NOTED	4-WAY	20x20	-	EXPOSED	40x40	36	MILL FINISH	STEEL	FURNISHED BY LENIXOX AND INSTALLED BY THE MECHANICAL CONTRACTOR.
CD E	CURBS PLUS, INC. VFPD 2415-1012.3	AS NOTED	4-WAY	24x24	-	EXPOSED	44x44	36	MILL FINISH	STEEL	FURNISHED BY LENIXOX AND INSTALLED BY THE MECHANICAL CONTRACTOR.
EG A	PRICE 535	AS NOTED	EXHAUST	AS NOTED	-	SURFACE MOUNTED	NECK SIZE + 1.34"	30	WHITE POWDER COAT	STEEL	TAG 
TG A	PRICE 81	AS NOTED	TRANSFER	AS NOTED	-	LAY-IN CEILING	24x12	30	WHITE POWDER COAT	ALUMINUM	
TG B	PRICE 535	AS NOTED	TRANSFER	AS NOTED	-	SURFACE MOUNTED	NECK SIZE + 1.34"	30	WHITE POWDER COAT	STEEL	

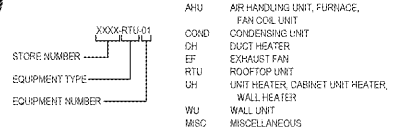
LIGHTING AND HEATING SCHEDULE											
	PARKING LOT / NON-SECURITY BUILDING FIXTURES	EXTERIOR SIGNS / SECURITY BUILDING FIXTURES	ROOFTOP LIGHTS (WORK LAMP)	RECEPTION LIGHTS	INTERIOR LIGHTS (WORK AREA)	INTERIOR LIGHTS (OFFICE)	HEATING	COOLING	SUNDAY		
ON	DUSK (BY PHOTOCELL)	DUSK TO DAWN PHOTOCELL (ALWAYS ON DURING DARK)	7:00 AM	8:00 AM	STORE OPEN	STORE OPEN	68 DEGREES AT 7:00 AM	72 DEGREES AT 7:00 AM	SAME TEMPS AT 6:00 AM		
OFF	10:15 PM	DURING THE DAY	10:00 PM	8:00 PM	9:00 PM	6:00 PM	62 DEGREES AT 10:00 PM	78 DEGREES AT 10:00 PM	SAME TEMPS AT 8:00 PM		
LIGHTING CONTROL ZONE	GROUP 4	GROUP 3	GROUP 1	GROUP 2	GROUP 2	GROUP 2					
CONTROL ZONE	THE SYSTEM CAN BE OVERRIDDEN BY THE SECURITY KEYPAD. COOLING SHUT OFF TIMES WITH HARBOR FREIGHT PRIOR TO PROGRAMMING.										

DUCTWORK SCHEDULE				
DUCT SYSTEM	SMAXIA PRESSURE CLASS	SMAXIA SEAL CLASS	DUCT MATERIAL	INSULATION
EXPOSED SUPPLY AIR DUCTWORK	2" W.C.	B	GALVANIZED STEEL	REFER TO SPECIFICATIONS
CONCEALED SUPPLY AIR DUCTWORK	2" W.C.	B	GALVANIZED STEEL	2" DUCT WRAP
RETURN AIR DUCTWORK	1" W.C.	C	GALVANIZED STEEL	1" DUCT LINING
EXHAUST AIR DUCTWORK	1" W.C.	C	GALVANIZED STEEL	NONE

NOTE: ALL DUCTWORK SIZES ARE AIRWAY DIMENSIONS

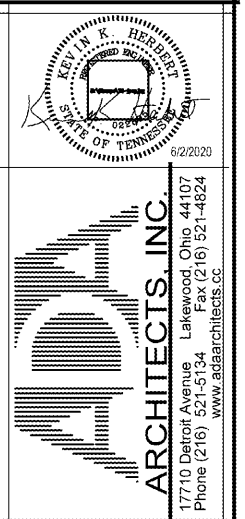
FAN SCHEDULE												
PLAN TAG	LABEL TAG	MANUFACTURER & MODEL NUMBER	AREA SERVED	SERVICE	CFM	ESP	WATTS & VOLTAGE	FAN RPM	FAN TYPE	MAX. SOUND LEVEL	WEIGHT (LBS)	REMARKS
EF-01	XXXX-EF-01	GREENHECK SP-A190	WOMENS ROOM	EXHAUST	100	3"	113 WATTS 120V/1Ø	1400	CEILING MTD.	3.4 SONE'S	17	SEE NOTES 1 - 7 BELOW
EF-02	XXXX-EF-02	GREENHECK SP-A190	MENS ROOM	EXHAUST	100	3"	113 WATTS 120V/1Ø	1400	CEILING MTD.	3.4 SONE'S	17	SEE NOTES 1 - 7 BELOW
EF-03	XXXX-EF-03	FAITECH FG 9	MANAGERS OFFICE	EXHAUST	250	5"	119 WATTS 120V/1Ø	2550	IN-LINE		12	SEE NOTES 3 & 8 BELOW
EF-04	XXXX-EF-04	FAITECH FG 10	CASH OFFICE	EXHAUST	350	5"	138 WATTS 120V/1Ø	3000	IN-LINE		12	SEE NOTES 1 & 8 BELOW

NOTE: PROVIDE WITH THE FOLLOWING ITEMS:
 1. DISCONNECT SWITCH
 2. GRAVITY BACKDRAFT DAMPER
 3. INTEGRAL SPEED CONTROL SWITCH FOR BALANCING METAL CEILING GRILLES
 4. CONTROLLED BY LIGHT SWITCH (WHEN LIGHT SWITCH IS ACTIVATED THE FAN WILL ENGAGE)
 5. 14" HIGH PRE-FAB ROOF CURB
 6. HANDLING KIT WITH NEOPRENE VIBRATION ISOLATORS
 7. LINE VOLTAGE (120V) COOLING ONLY THERMOSTAT TPA 100



NOTE: MECHANICAL CONTRACTOR SHALL COORDINATE WITH THE CONSTRUCTION PM TO ACQUIRE THE STORE NUMBER PRIOR TO LABELING THE EQUIPMENT. THE MECHANICAL CONTRACTOR SHALL UPDATE THE ASBUILT DRAWINGS WITH THE STORE NUMBER.

DIRECTIONS:
 MECHANICAL CONTRACTOR SHALL LABEL ALL EQUIPMENT SO THEY ARE VISIBLE FROM BELOW. EQUIPMENT SHALL BE IDENTIFIED WITH THE LABEL TAG AS INDICATED ABOVE. SPACE TEMPERATURE SENSORS AND THERMOSTATS SHALL BE IDENTIFIED WITH THE EQUIPMENT PLAN TAG THAT SERVES THEM. THERMOSTAT AND SENSOR LABELS ARE TO BE 1/4" TALL BLACK STICKERS AND APICAL. FRONT EXHAUST FAN AND UNIT HEATER (ALL TYPES) LABELS ARE TO BE 1/2" TALL BLACK STICKERS AND APICAL. FRONT ROOFTOP EQUIPMENT LABELS ARE TO BE 2" TALL BLACK STICKERS AND APICAL. FRONT CONCENTRIC DIFFUSER LABELS ARE TO BE 2" TALL BLACK STICKERS AND APICAL. FRONT
 NOTE: EXTERIOR LABELS MUST BE SUITABLE FOR WEATHER APPLICATIONS AND FADE RESISTANT. EQUIPMENT LABELS SHALL BE MOUNTED NEXT TO THE UNIT MOUNTED DISCONNECT. IF THE UNIT DOES NOT HAVE UNIT MOUNTED DISCONNECT, THEN PLACE ON THE MOST VISIBLE PLACE.



HARBOR FREIGHT TOOLS

705 WYATT ROAD NORTHWEST
 CLEVELAND, TN 37312

ARCHITECTS, INC.
 17710 Detroit Avenue
 Lakewood, Ohio 44107
 Phone (216) 521-5134
 Fax (216) 521-4824
www.architects.com

REVISIONS									
#	DATE	TYPE							
1									
2									
3									
4									
5									
6									
7									
8									
9									
10									

MECHANICAL SCHEDULES

DATE 06/02/20

JOB NO. 19155

M1.1

SHEET NO.

Order Plans @ www.dolline.com